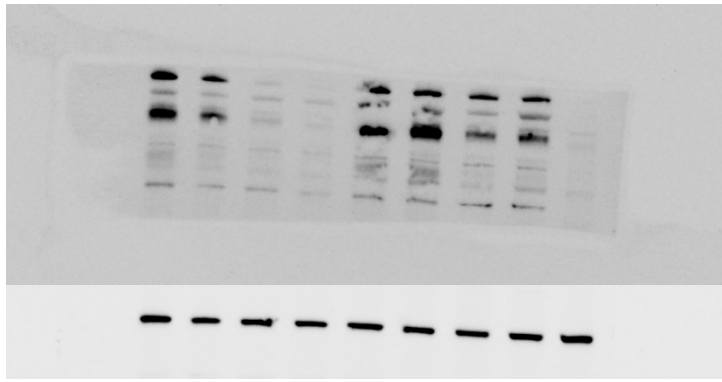
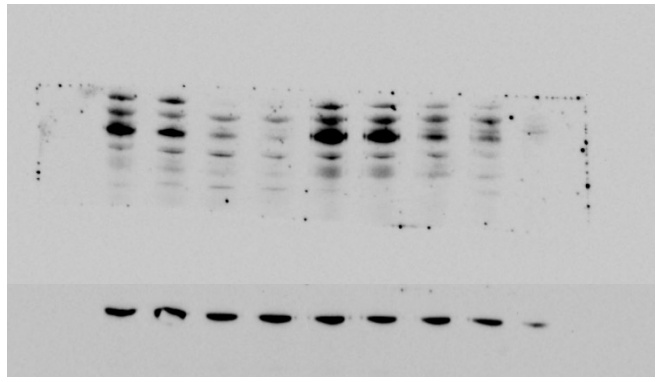
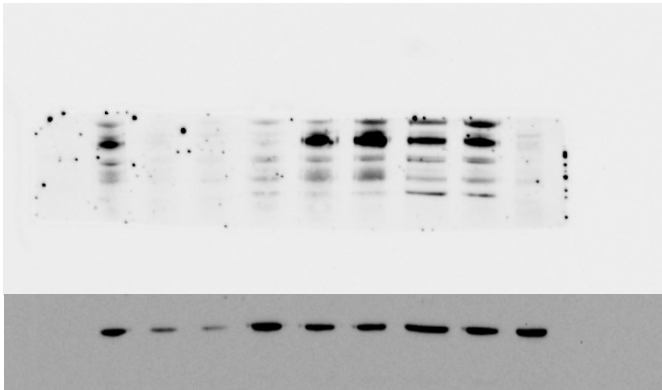
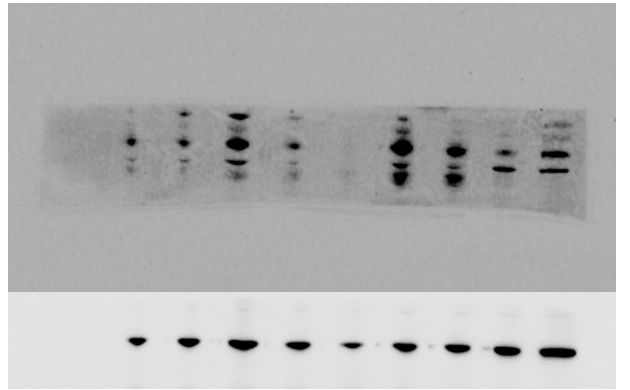
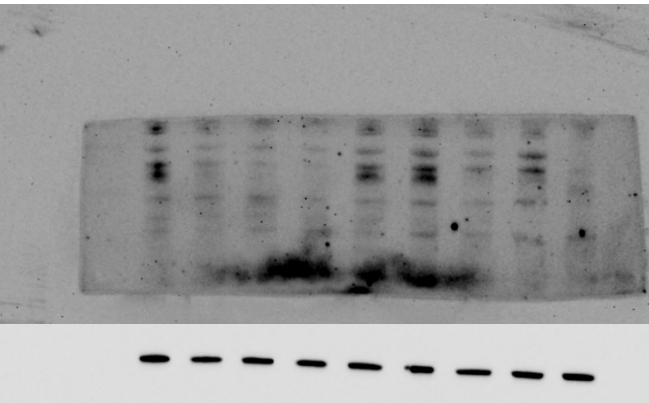
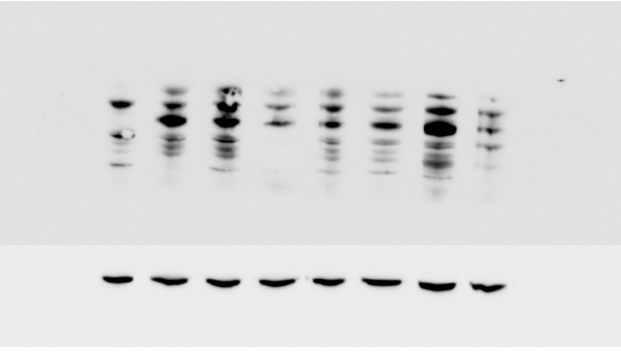
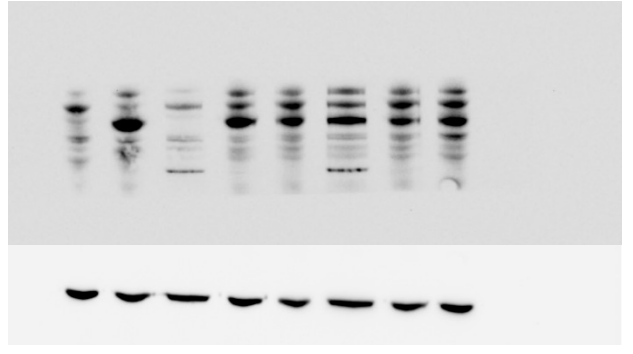


**A****B****C****D****E**

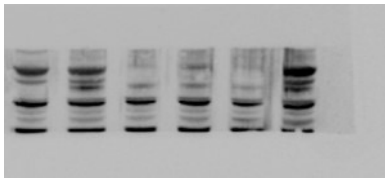
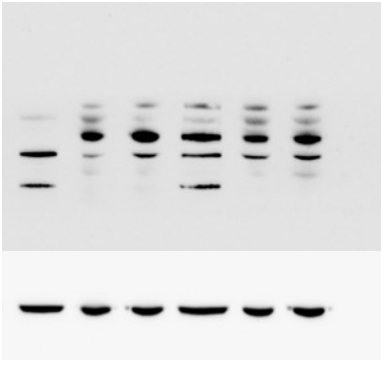
**F**



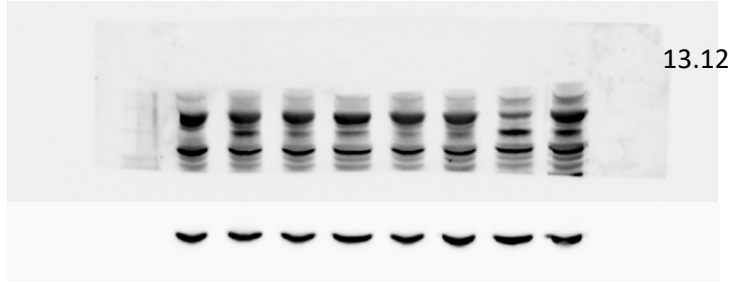
**G**



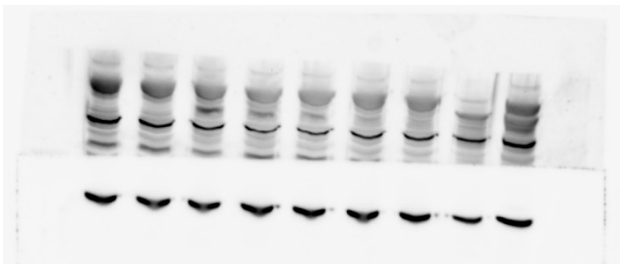
**I** 25.7



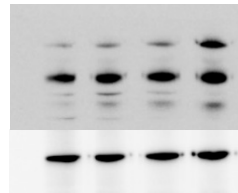
25.7

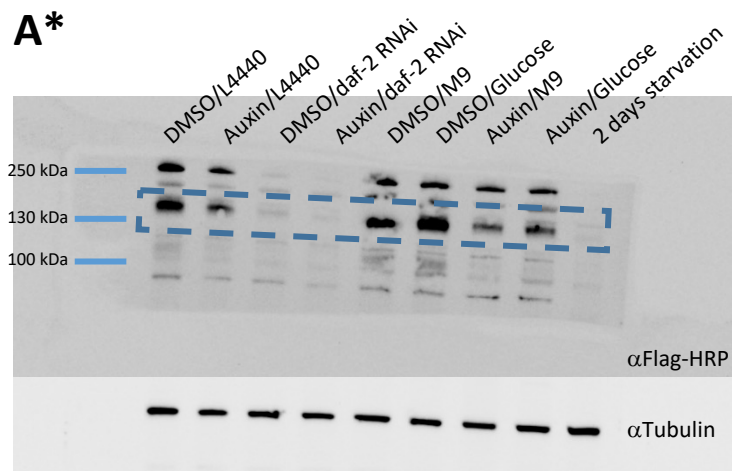


13.12

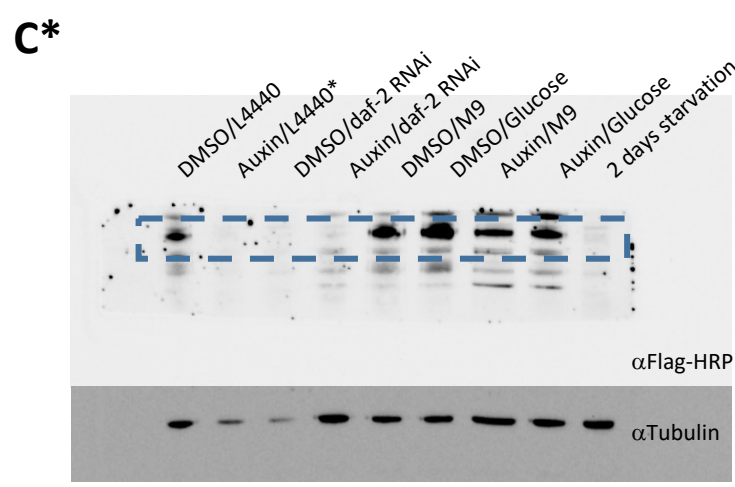
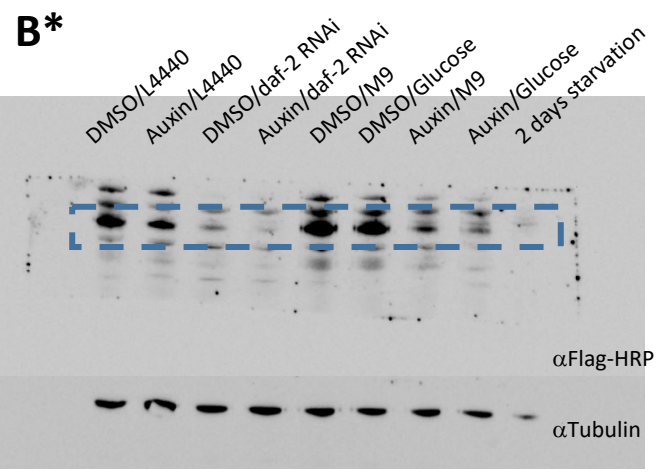


2.1

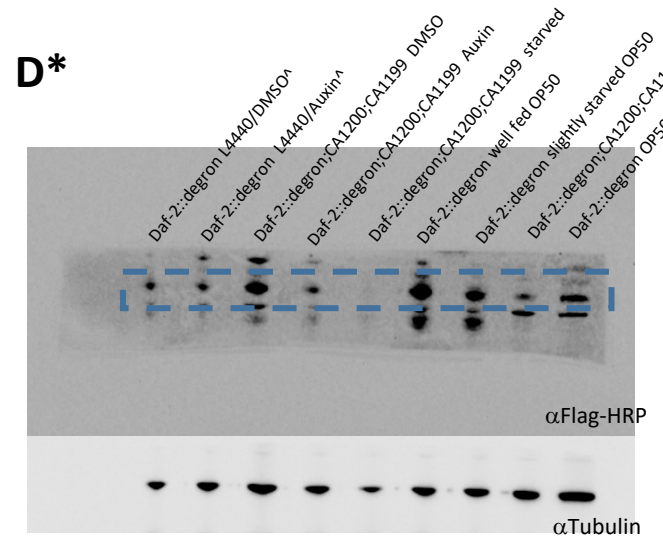




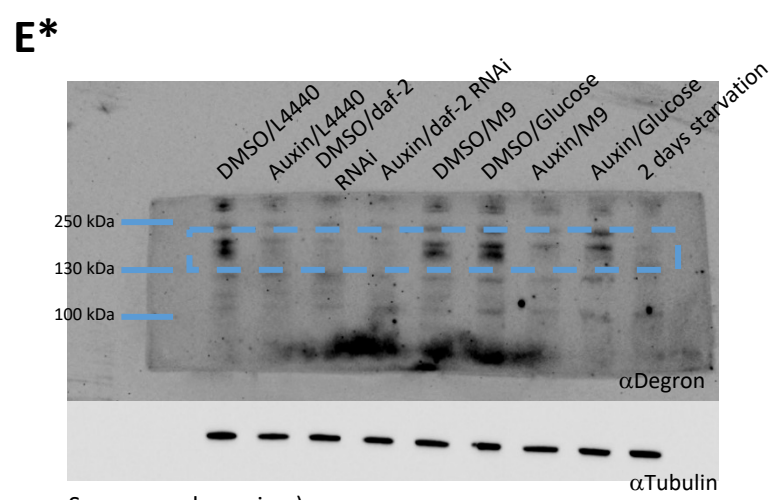
(This blot was used for fig. 1 C and 1F)



\*: sample was slightly starved when harvested and therefore excluded from analysis

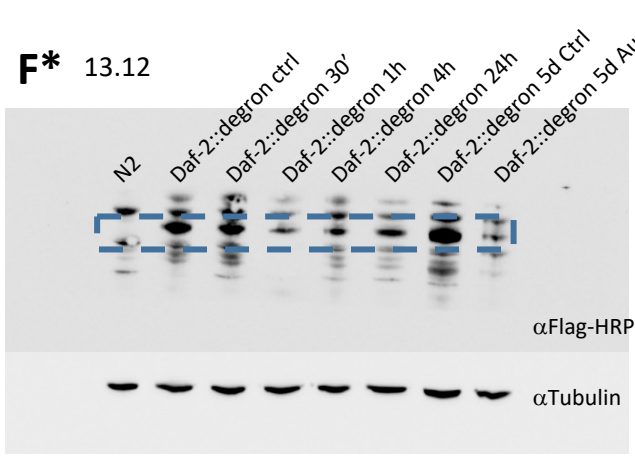


<sup>A</sup>: used for quantification in figure 1 I

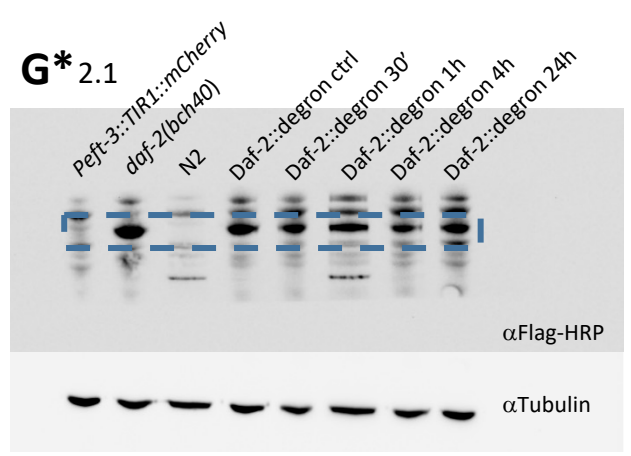


Same samples as in a)

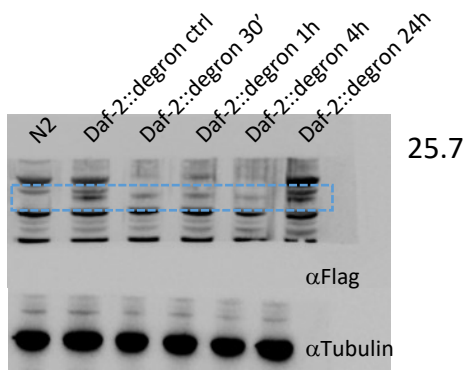
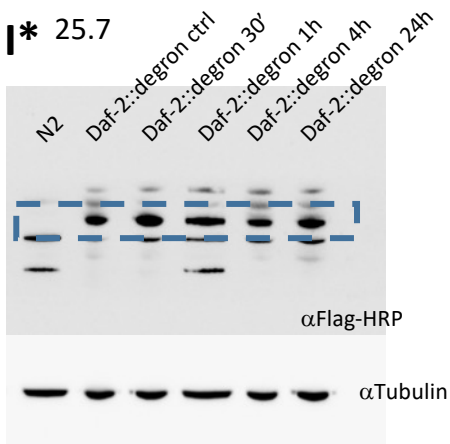
**F\*** 13.12



**G\*** 2.1



**I\*** 25.7



Samples boiled at 95°C

