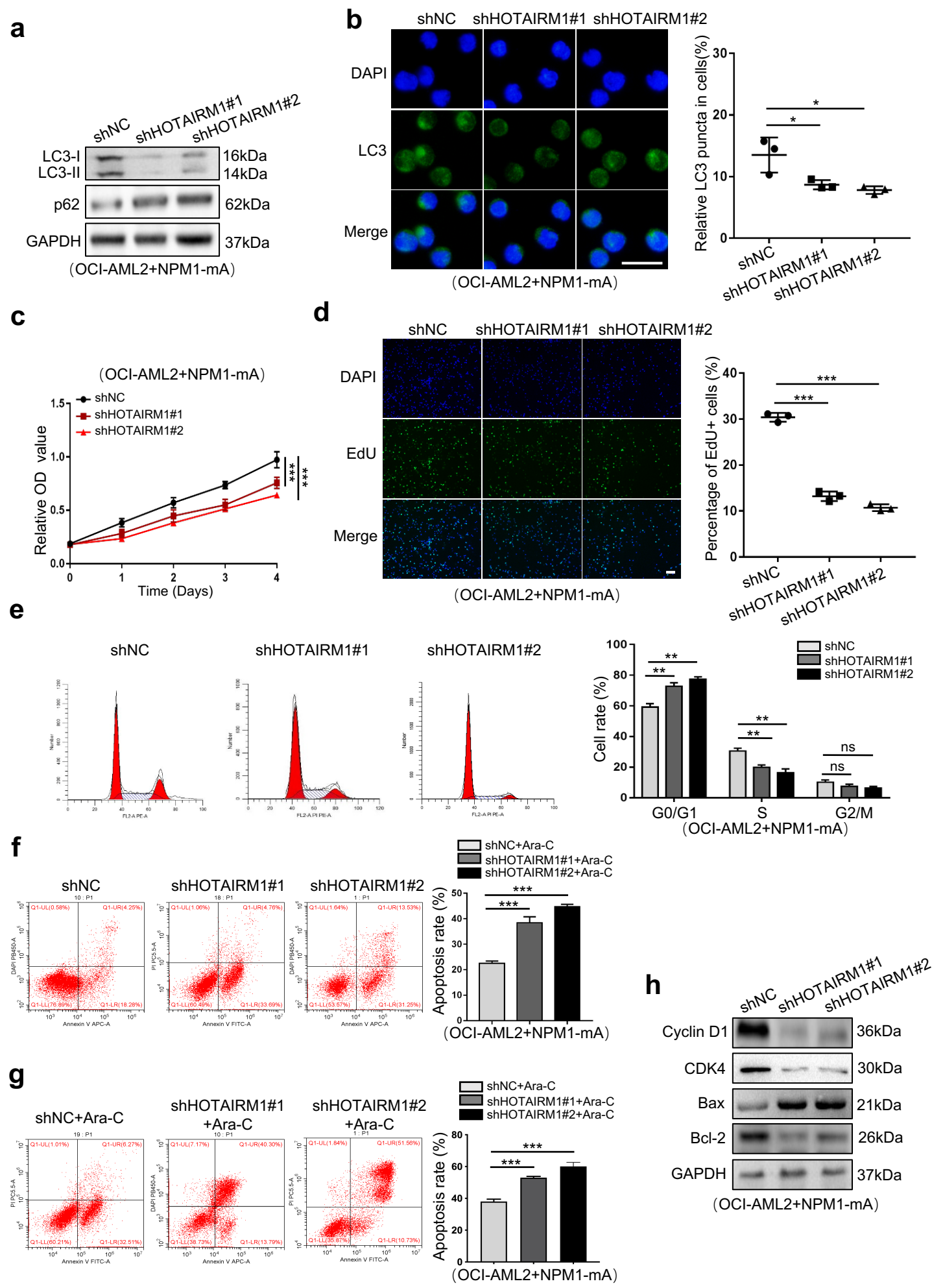


**Additional file 13: Figure S8.** HOTAIRM1 promotes autophagy and proliferation in transfected OCI-AML2+NPM1-mA leukemia cells



**Additional file 13: Figure S8 Continued** HOTAIRM1 promotes leukemia cell autophagy and proliferation in transfected OCI-AML2+NPM1-mA cells

