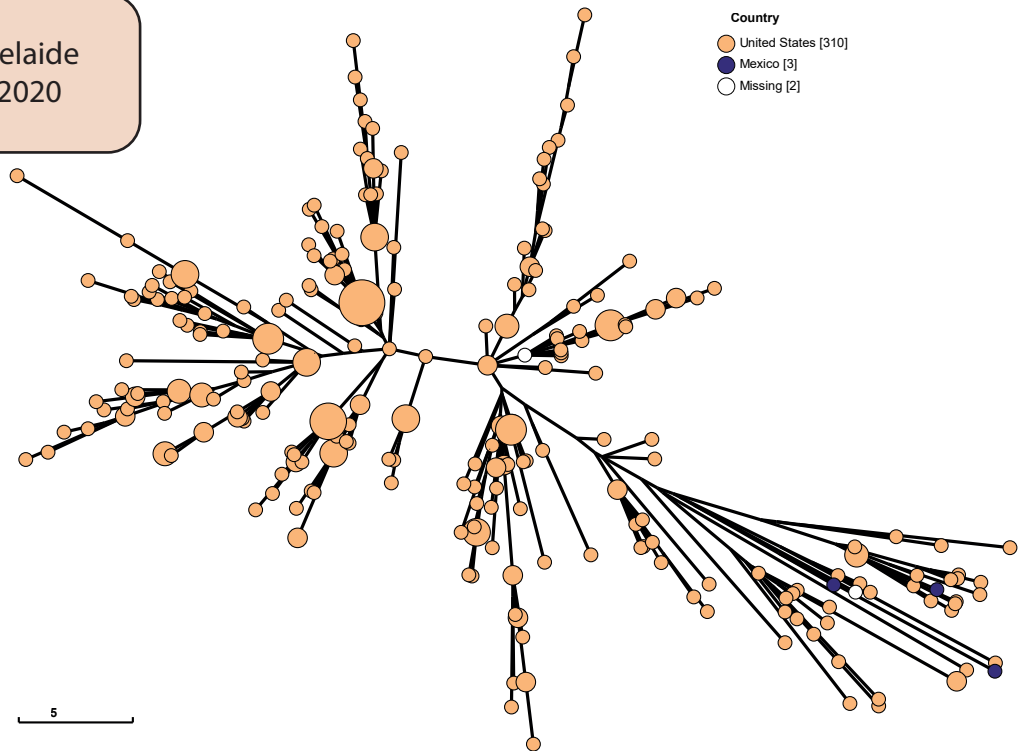


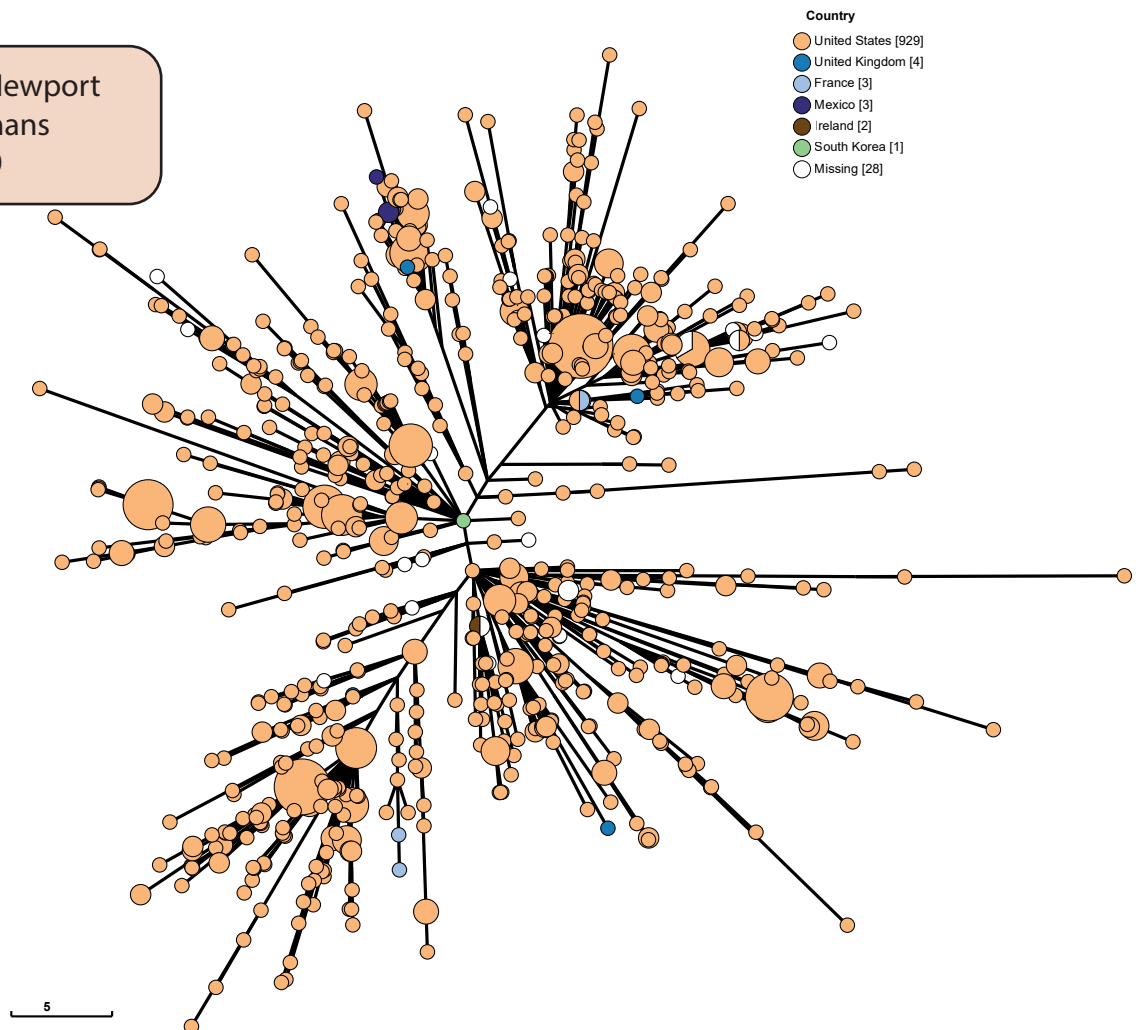
A

HC20\_10 Adelaide  
Swine 2009-2020



B

HC20\_44 Newport  
Cows, Humans  
2000-2020



**S4 Fig.** Ninja NJ visualization of allelic differences in the 3002 core genes of the cgMLST *Salmonella* scheme with GrapeTree for genomes within A) HC20\_10 and B) HC20\_44. Further information on these HC20 clusters is summarized in Tables 2, 4 and 5, and an interactive version of both trees can be accessed at [https://enterobase.warwick.ac.uk/ms\\_tree?tree\\_id=45443](https://enterobase.warwick.ac.uk/ms_tree?tree_id=45443) and [https://enterobase.warwick.ac.uk/ms\\_tree?tree\\_id=45449](https://enterobase.warwick.ac.uk/ms_tree?tree_id=45449).