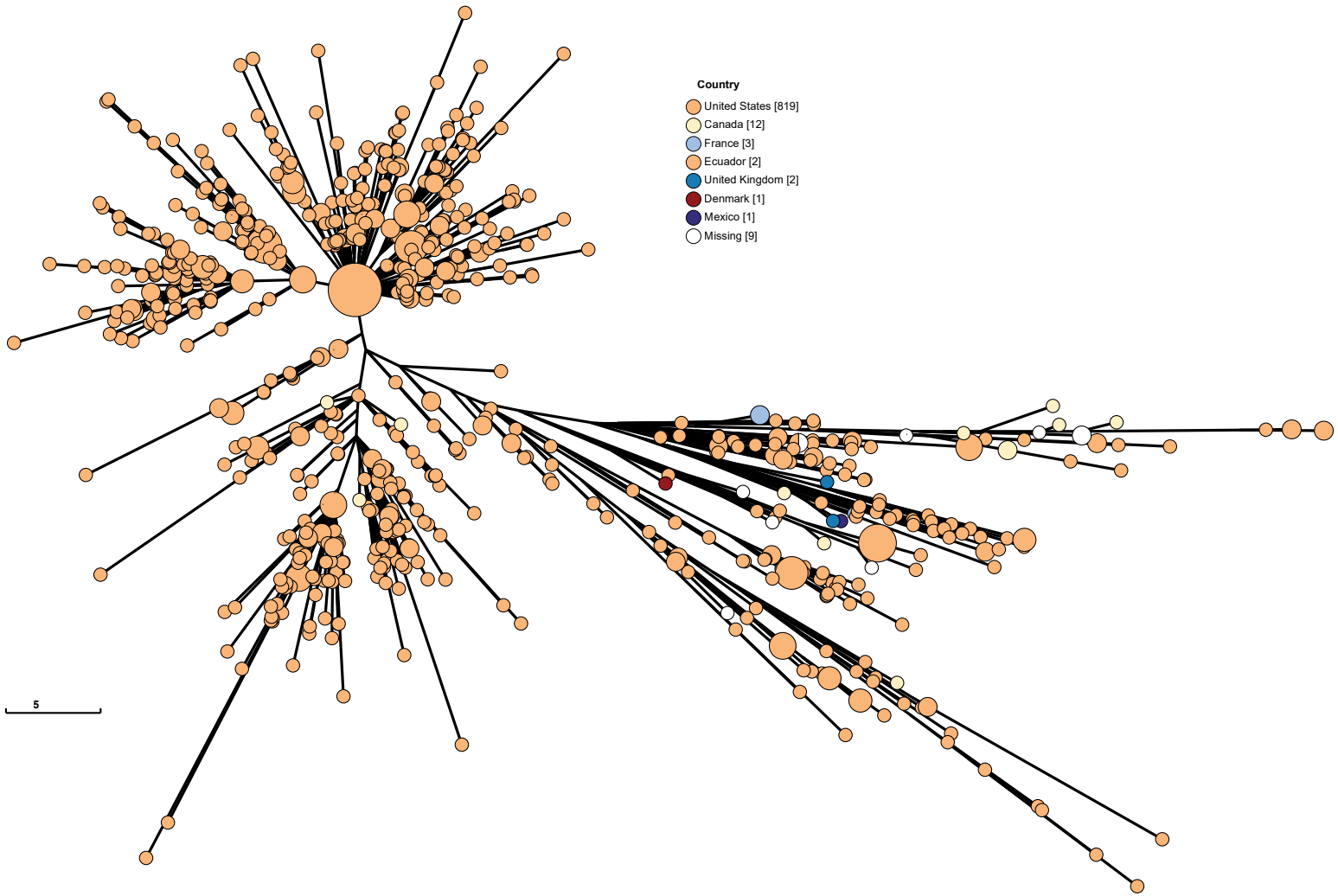
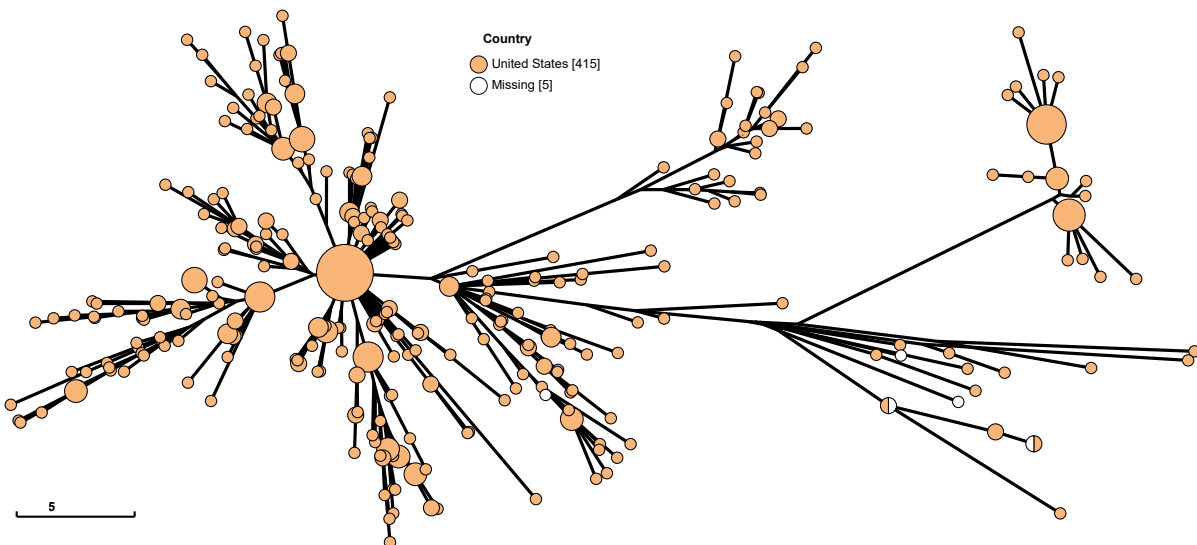


HC20_557 Muenchen
Chickens, Swine
1988-2020



HC20_710 Johannesburg
Swine
2003-2020



S6 Fig. Ninja NJ visualization of allelic differences in the 3002 core genes of the cgMLST *Salmonella* scheme with GrapeTree for genomes within A) HC20_557 and B) HC20_710. Further information on these HC20 clusters is summarized in Tables 2, 4 and 5, and an interactive version of both trees can be accessed at https://enterobase.warwick.ac.uk/ms_tree?tree_id=45446 and https://enterobase.warwick.ac.uk/ms_tree?tree_id=45445.