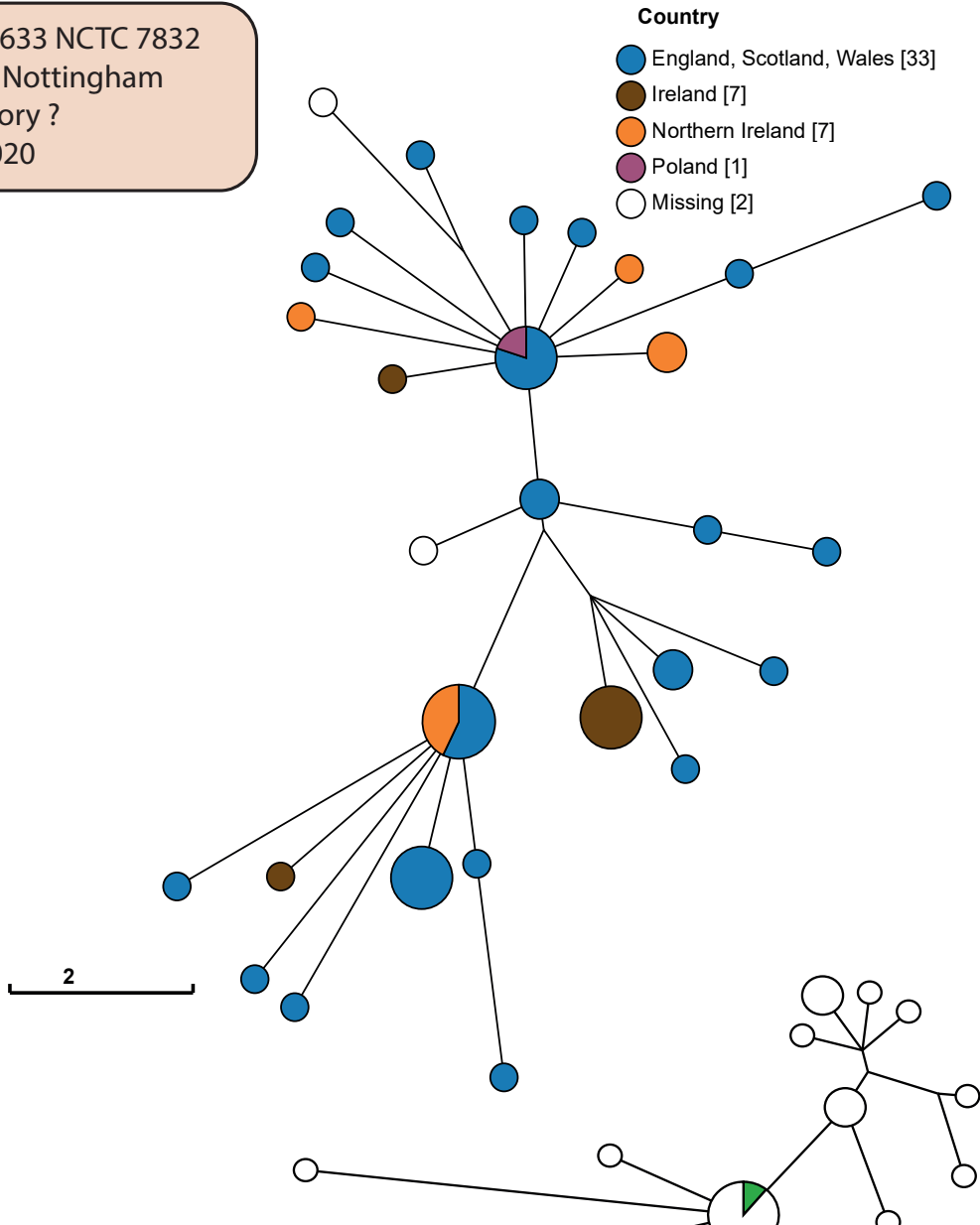


A

HC5_20633 NCTC 7832
 Serovar Nottingham
 Laboratory ?
 2000-2020



S9 Fig. Ninja NJ visualization of allelic differences in the 3002 core genes of the cgMLST *Salmonella* scheme with GrapeTree for genomes within A) HC20_20633 and B) HC20_5519.

Further information on these HC20 clusters is summarized in Tables 2, 4 and 5, and an interactive version of both trees can be accessed at

https://enterobase.warwick.ac.uk/ms_tree?tree_id=60214

and https://enterobase.warwick.ac.uk/ms_tree?tree_id=60272.

B

HC20_5519 SL1344
 Serovar Typhimurium
 Laboratory
 2002-2018

