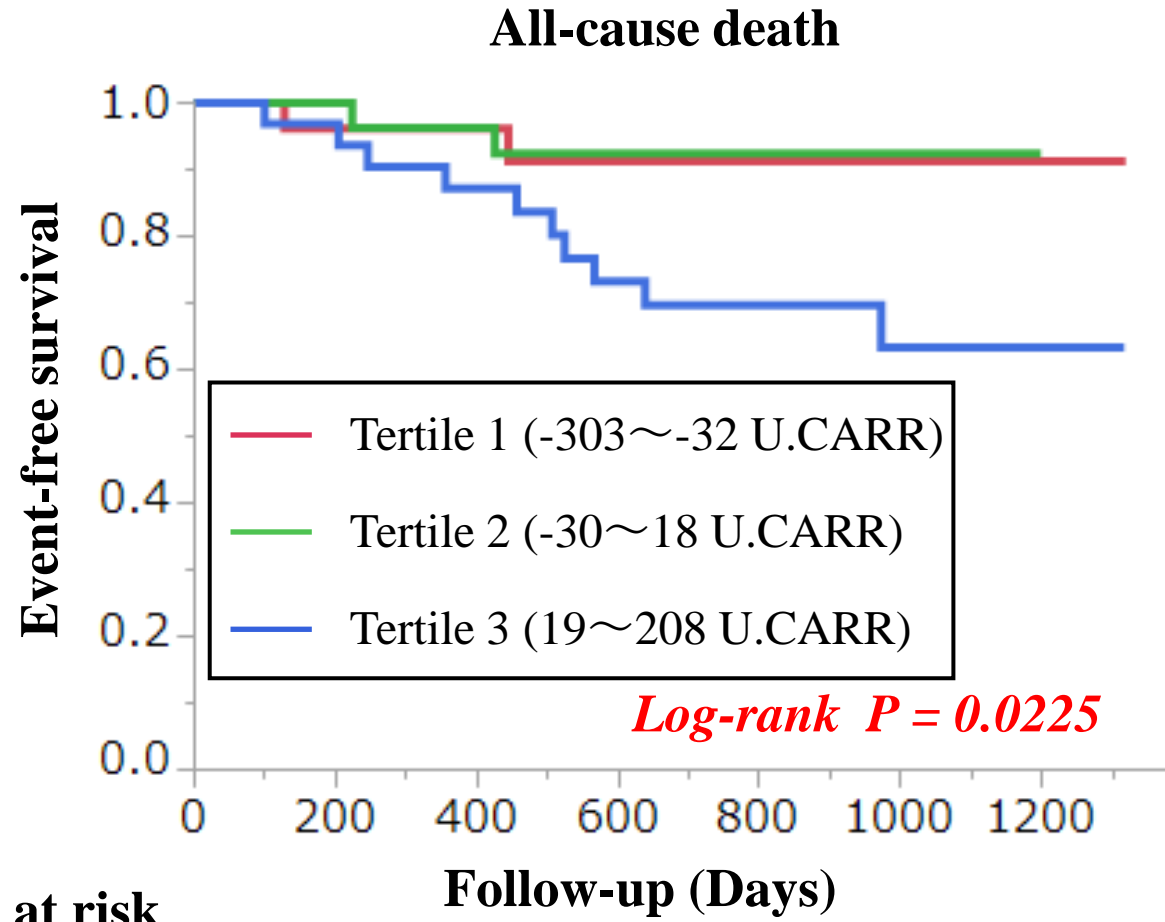


Figure S1



	Follow-up (Days)			
No. at risk	0	200	400	600
Tertile 1	31	23	13	5
Tertile 2	31	26	15	1
Tertile 3	32	27	21	5

**Fig. S1. Kaplan–Meier curves for all cause death**

Kaplan-Meier analysis revealed that there were many all cause death in the highest  $\Delta d$ -ROM tertile compared to the lower 2 tertiles of  $\Delta d$ -ROM levels (log-rank test  $P = 0.023$ ).