

SUPPLEMENTAL MATERIAL

Table of Contents

Supplemental Methods. List of the R packages.

Supplemental Table 1. Histological diagnosis at 1 year after randomization.

Supplemental Figure 1. eGFR at 1 year after randomization

Supplemental Figure 2. UPCR at 1 year after randomization

Supplemental Figure 3. iBox^{#1} scores at 1 year after randomization and projected allograft survival for living donors

Supplemental Figure 4. iBox^{#1} scores at 1 year after randomization and projected allograft survival for deceased donors

Supplemental Figure 5. iBox^{#1} scores at 2 year after randomization and projected allograft survival

List of Independent Ethics Committees (IECs) or Institutional Review Boards (IRBs) from the TRANSFORM study

Supplemental Methods. List of the R packages.

The R packages used for this study:

- **survival:** <https://cran.r-project.org/package=survival>
- **pec:** <https://cran.r-project.org/package=pec>
- **ggplot2:** <https://cran.r-project.org/package=ggplot2>
- **ggthemes:** <https://cran.r-project.org/package=ggthemes>
- **devtools:** <https://cran.r-project.org/package=devtools>
- **yarr:** <https://cran.r-project.org/package=yarr>

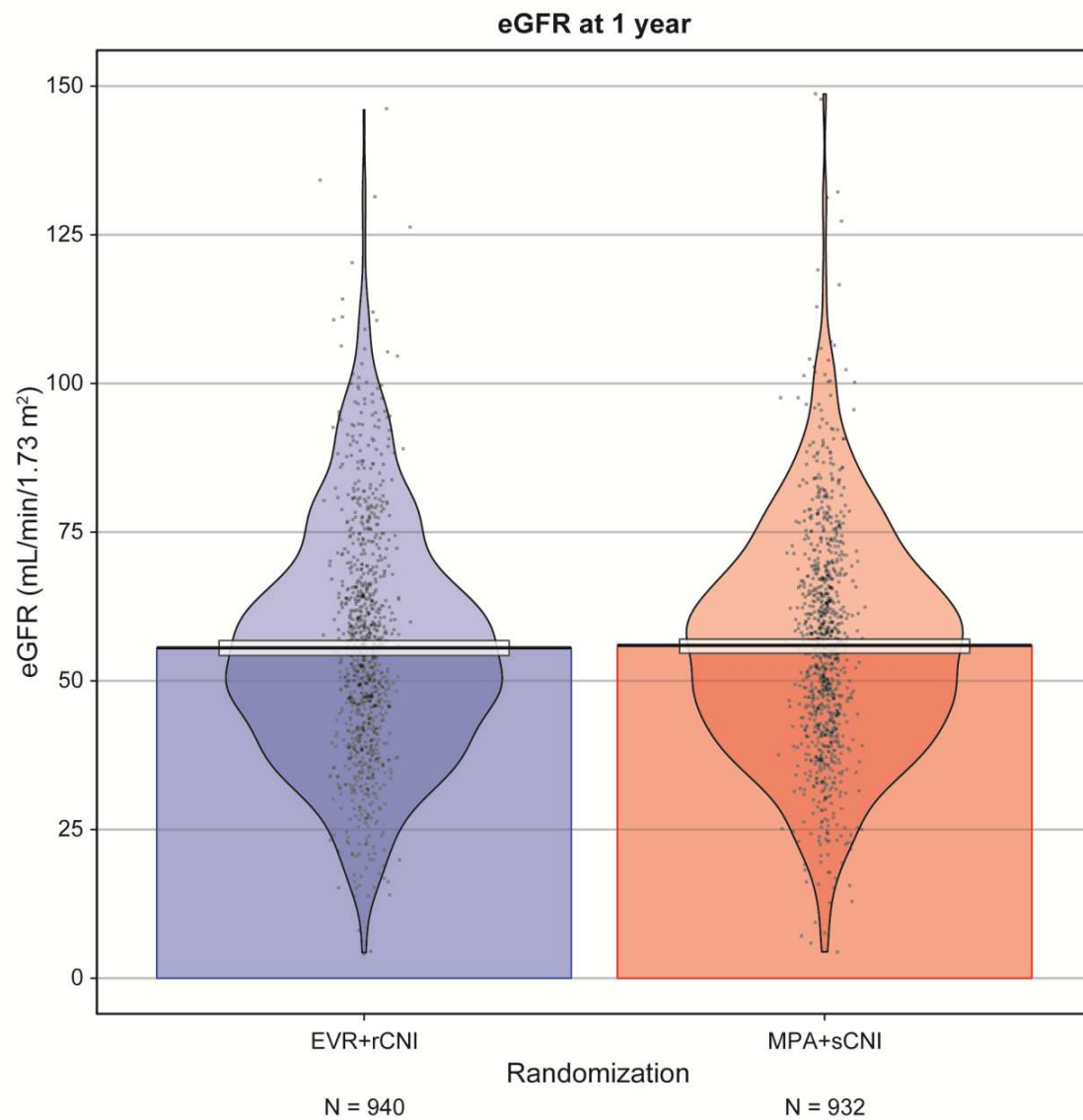
Supplemental Table 1. Histological diagnosis at 1 year after randomization

Histological parameters, n (%)	EVR+rCNI	MPA+sCNI	P value
	N = 345	N = 361	
Active ABMR	62 (18.0)	52 (14.4)	0.198
Chronic AMR	6 (1.74)	11 (3.05)	0.257
TCMR	61 (17.68)	57 (15.79)	0.501
Borderline rejection	42 (12.17)	35 (9.69)	0.291
BK virus nephropathy	8 (2.32)	10 (2.78)	0.704
Nephropathy recurrence	8 (2.32)	4 (1.11)	0.213

ABMR, antibody-mediated rejection; EVR, everolimus; MPA, mycophenolic acid; rCNI, reduced-exposure calcineurin inhibitor; sCNI, standard-exposure calcineurin inhibitor; TCMR, T-cell mediated rejection

Supplemental Figure 1. eGFR at 1 year after randomization

Mean eGFR in the EVR+rCNI arm (blue) and MPA+sCNI arm (pink; $P = 0.4864$ for the comparison of mean eGFR between arms.

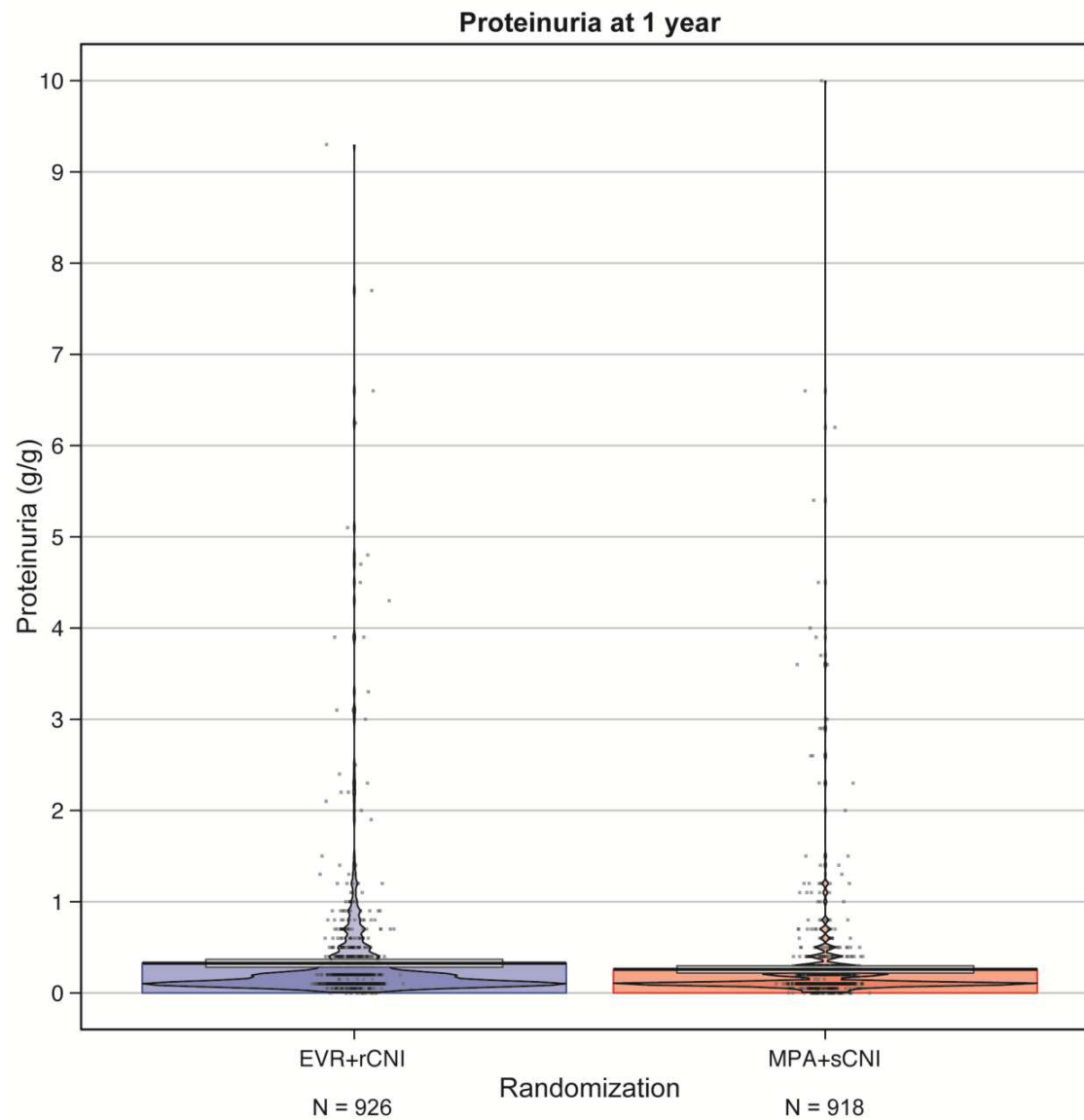


eGFR, estimated glomerular filtration rate; EVR, everolimus; MPA, mycophenolic acid;

rCNI, reduced-exposure calcineurin inhibitor; sCNI, standard-exposure calcineurin inhibitor

Supplemental Figure 2. UPCR at 1 year after randomization

Mean UPCR in the EVR+rCNI arm (blue) and the MPA -CNI arm (pink). $P = 0.0133$ for the



comparison of mean UPCR between arms.

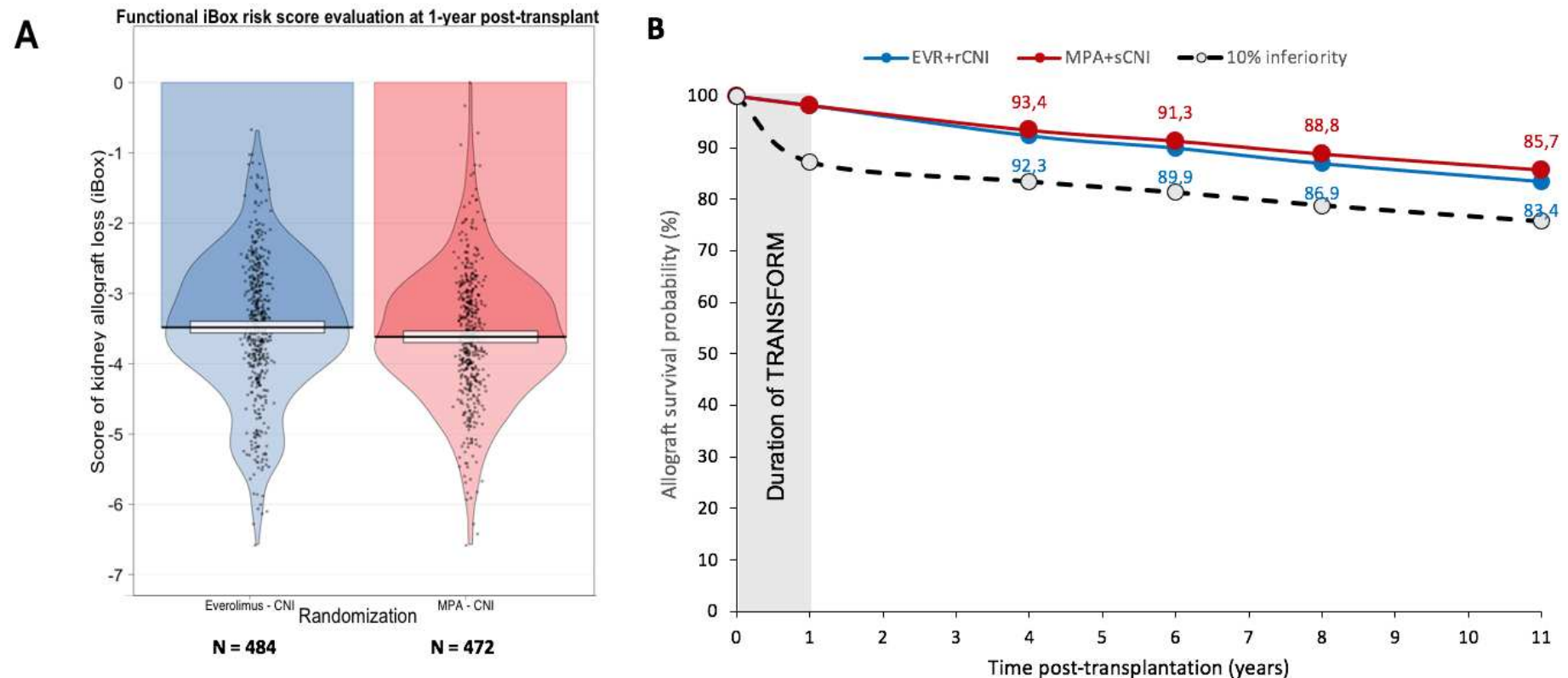
EVR, everolimus; MPA, mycophenolic acid; rCNI, reduced-exposure calcineurin inhibitor;

sCNI, standard-exposure calcineurin inhibitor; UPCR, urinary protein creatinine ratio

Supplementary Figure 3: iBox^{#1} scores at 1 year after randomization and projected allograft survival for living donors

A) Mean iBox^{#1} scores in the EVR+rCNI and MPA+sCNI arms at 1 year for living donors.

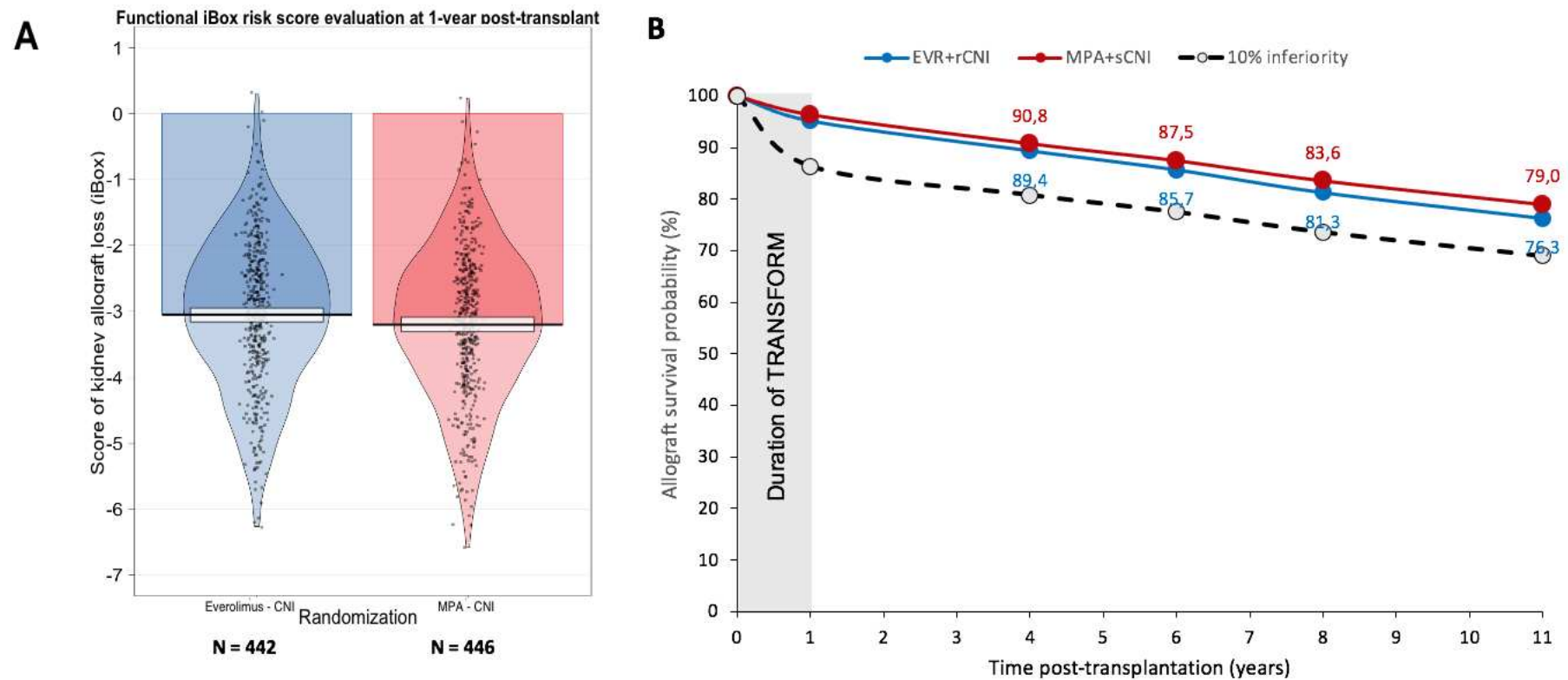
B) Projected allograft survival in EVR+rCNI arm (blue line) and MPA+sCNI arm (red line) for living donors. The black dotted line corresponds to the 10% inferiority margin. The duration of TRANSFORM is the time between randomization and the last follow-up of the patients involved in the TRANSFORM study (1 year post-randomization). The projected kidney allograft survival takes into account the event (death censored graft loss) that occurred during the duration of TRANSFORM study. EVR, everolimus, MPA, mycophenolic acid; rCNI, reduced-exposure calcineurin inhibitor; sCNI, standard-exposure calcineurin inhibitor.



Supplementary Figure 4: iBox^{#1} scores at 1 year after randomization and projected allograft survival for deceased donors

A) Mean iBox^{#1} scores in the EVR+rCNI and MPA+sCNI arms at 1 year for deceased donors.

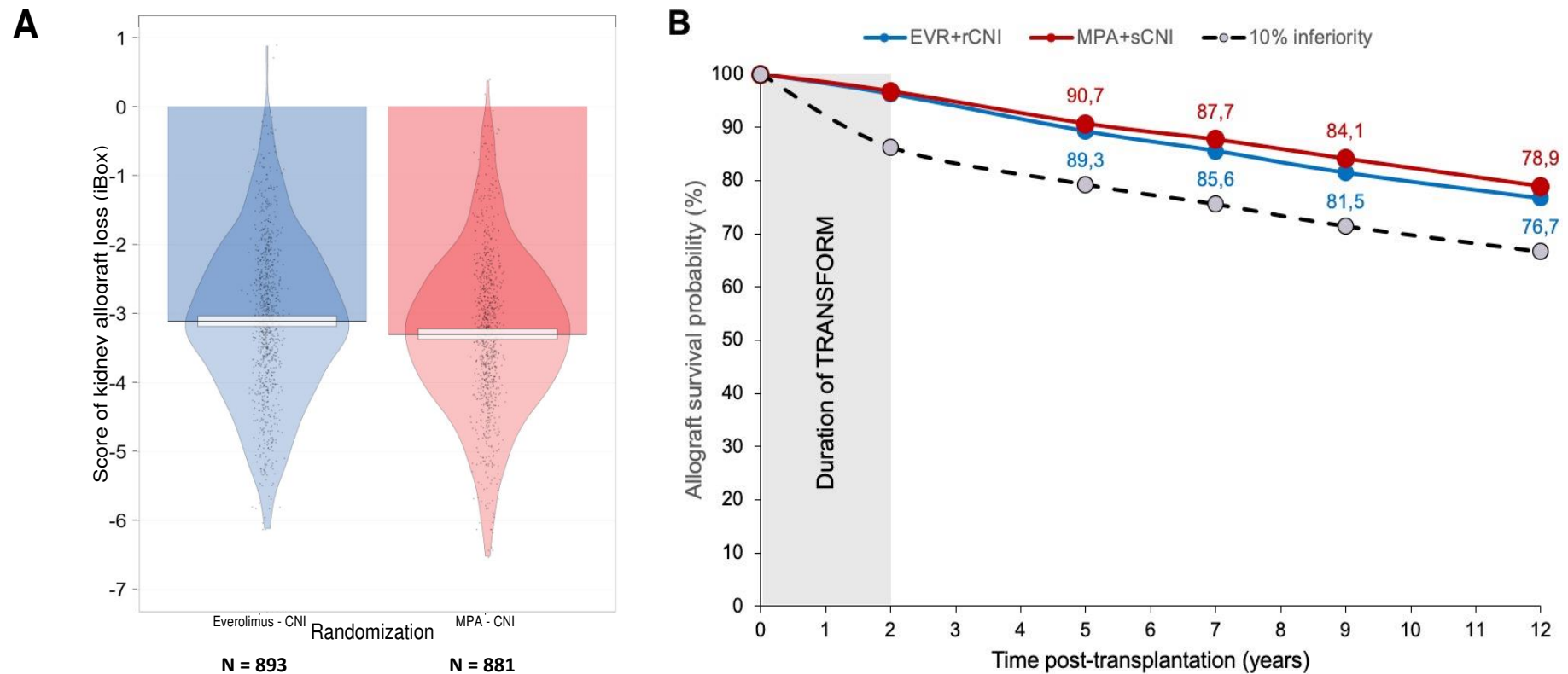
B) Projected allograft survival in EVR+rCNI arm (blue line) and MPA+sCNI arm (red line) for deceased donors. The black dotted line corresponds to the 10% inferiority margin. The duration of TRANSFORM is the time between randomization and the last follow-up of the patients involved in the TRANSFORM study (1 year post-randomization). The projected kidney allograft survival takes into account the event (death censored graft loss) that occurred during the duration of TRANSFORM study. EVR, everolimus, MPA, mycophenolic acid; rCNI, reduced-exposure calcineurin inhibitor; sCNI, standard-exposure calcineurin inhibitor.



Supplemental Figure 5. iBox^{#1} scores at 2 year after randomization and projected allograft survival

A) Mean iBox^{#1} scores in the EVR+rCNI and MPA+sCNI arms at 2 year.

B) Projected allograft survival in EVR+rCNI arm (blue line) and MPA+sCNI arm (red line). The black dotted line corresponds to the 10% inferiority margin. The duration of TRANSFORM is the time between randomization and the last follow-up of the patients involved in the TRANSFORM study (2 years post-randomization). The projected kidney allograft survival takes into account the event (death censored graft loss) that occurred during the duration of TRANSFORM study. EVR, everolimus, MPA, mycophenolic acid; rCNI, reduced-exposure calcineurin inhibitor; sCNI, standard-exposure calcineurin inhibitor.



List of Independent Ethics Committees (IECs) or Institutional Review Boards (IRBs) from the TRANSFORM study

Ethics Committee or Institutional Review Board	Department / Organization	City, State/Province, Postal Code Country
CIEIS Clínica Chutro S.R.L.	CIEIS Clínica Chutro S.R.L.	Ciudad De Cordoba, Córdoba,(X5000EPU) Argentina
Comité Institucional De Ética De Investigación En Salud	Hospital Privado Centro Médico De Córdoba	Ciudad De Cordoba, Córdoba, (X5016KEH) Argentina
Comité De Ética Y Docencia Maipú - CEDIMA	Diagnóstico Maipú	Vicente López, (B1602ABQ) Pcia. De Buenos Aires, Argentina
Comité De Ética Para Ensayos En Farmacología Clínica, Fundación De Estudios Farmacológicos Y Medicamentos Fefym	NAP	Ciudad Autónoma De Buenos Aires, (C1027AAP) Argentina
Comité De Ética Para Ensayos En Farmacología Clínica, Fundación De Estudios Farmacológicos Y Medicamentos Fefym	NAP	Ciudad Autónoma De Buenos Aires, (C1027AAP) Argentina
Comité De Bioética – Fundación Favalaro	Hospital Universitario Fundación Favalaro	Ciudad Autónoma De Buenos Aires, (C1078AAI) Argentina
Comité De Ética De Protocolos De Investigación (CEPI)	Hospital Italiano De Buenos Aires	Ciudad Autónoma De Buenos Aires, (C1199ABB) Argentina
Sydney Local Health District Human Research Ethics Committee	Research Ethics And Governance Office	Royal Prince Alfred Hospital, Camperdown NSW 2050 Australia
Sydney Local Health District Human Research Ethics Committee	Research Ethics And Governance Office	Royal Prince Alfred Hospital, Camperdown NSW 2050 Australia
Sydney Local Health District Human Research Ethics Committee	Research Ethics And Governance Office	Royal Prince Alfred Hospital, Camperdown NSW 2050 Australia
Sir Charles Gairdner Group Human Research Ethics Committee	Research Ethics And Governance Office	Sir Charles Gairdner Hospital, Level 2 A Block, Hospital Avenue, Nedlands WA 6009 Australia
Sydney Local Health District Human Research Ethics Committee	Research Ethics And Governance Office	Royal Prince Alfred Hospital, Camperdown NSW 2050 Australia
Sir Charles Gairdner Group Human Research Ethics Committee	Research Ethics And Governance Office	Sir Charles Gairdner Hospital, Level 2 A Block, Hospital Avenue, Nedlands WA 6009 Australia
Sydney Local Health District Human Research Ethics Committee	Research Ethics And Governance Office	Royal Prince Alfred Hospital, Camperdown NSW 2050 Australia
Royal Adelaide Hospital Research Ethics Committee	Research Ethics And Governance Office	Level 4, Women's Health Centre, Royal Adelaide Hospital, North Terrace, Adelaide SA 5000 Australia
Sydney Local Health District Human Research Ethics Committee	Research Ethics And Governance Office	Royal Prince Alfred Hospital, Camperdown NSW 2050 Australia

Ethics Committee or Institutional Review Board	Department / Organization	City, State/Province, Postal Code Country
Sydney Local Health District Human Research Ethics Committee	Research Ethics And Governance Office	Royal Prince Alfred Hospital, Camperdown NSW 2050 Australia
Ethikkommission Land Oberoesterreich	Kepler Universitaetsklinikum Neuromed Campus	Linz, 4020 AUSTRIA
Ethikkommission Land Oberoesterreich	Kepler Universitaetsklinikum Neuromed Campus	Linz, 4020 AUSTRIA
Ethische Commissie Onderzoek UZ/KU Leuven		Leuven, 3000 Belgium
Comité Voor Medische Ethiek UZA/UA		Edegem, 2650 Belgium
Comité D'éthique Hospitalo-Facultaire Erasme-ULB		Brussels, 1070 Belgium
Comité D'éthique Hospitalo-Facultaire Universitaire De Liège		Liège, 4000 Belgium
Comitê De Ética Em Pesquisa Da Universidade Federal De São Paulo (Unifesp) / Hospital São Paulo	Universidade Federal De São Paulo (Unifesp) / Hospital São Paulo	São Paulo/ Sp, Zipcode: 04023-061- Brazil
Comitê De Ética Em Pesquisa Do Hospital Das Clínicas Da Faculdade De Medicina Da Universidade De São Paulo – Hcfmusp	Hospital Das Clínicas Da Faculdade De Medicina Da Universidade De São Paulo – Hcfmusp	São Paulo/ Sp, 05403-010 - Brazil
Comitê De Ética Em Pesquisa Da Irmandade Da Santa Casa De Misericórdia De Porto Alegre	Irmandade Da Santa Casa De Misericórdia De Porto Alegre	Porto Alegre/Rs, 90020-090 - Brazil
Local Ethics Committee At UMHAT Aleksandrovskia EAD – Sofia	Local Ethics Committee At UMHAT Aleksandrovskia EAD – Sofia	1 "Sveti Georgi Sofiiski" Str, Sofia 1431, Bulgaria
Comité Ético Científico Del Servicio De Salud Metropolitano Sur Oriente.		Puente Alto, Santiago, Zip Code 820257, Chile
Comite De Etica En Investigacion Clínica	Fundación Cardioinfantil	Bogota DC, Cundinamarca, 11001, Colombia
Comite De Etica En Investigacion Biomedica	Fundacion Valle Del Lili	Cali, Valle Del Cauca, 760031, Colombia
Središnje Etičko Povjerenstvo / Central Ethics Committee	N/A	Zagreb, 10000
Središnje Etičko Povjerenstvo / Central Ethics Committee	N/A	Croatia
Središnje Etičko Povjerenstvo / Central Ethics Committee	N/A	Zagreb, 10000
Etická Komise	N/A	Pekařská 53, 602 00 Brno, Czech Republic
Medical Research Ethics Committee Mansoura University	Mansoura University	Mansoura, PO Box. 35516, Egypt.
Comité De Protection Des Personnes Ile De France 2	Hôpital Necker, 149 Rue De Sèvres, Carré Necker-Porte N2	Paris, 75743 Cedex 15, France

Ethics Committee or Institutional Review Board	Department / Organization	City, State/Province, Postal Code Country
Comité De Protection Des Personnes Ile De France 2	Hôpital Necker, 149 Rue De Sèvres, Carré Necker-Porte N2	Paris, 75743 Cedex 15, France
Comité De Protection Des Personnes Ile De France 2	Hôpital Necker, 149 Rue De Sèvres, Carré Necker-Porte N2	Paris, 75743 Cedex 15, France
Comité De Protection Des Personnes Ile De France 2	Hôpital Necker, 149 Rue De Sèvres, Carré Necker-Porte N2	Paris, 75743 Cedex 15, France
Comité De Protection Des Personnes Ile De France 2	Hôpital Necker, 149 Rue De Sèvres, Carré Necker-Porte N2	Paris, 75743 Cedex 15, France
Ethik-Kommission Der Medizinischen Fakultät Heidelberg	Universitätsklinikum Heidelberg Nierenzentrum Heidelberg	Heidelberg, 69120, Germany
Ärzttekammer Niedersachsen Ethik-Kommission	Nephrologisches Zentrum Niedersachsen	Hann. Münden, 34346, Germany
Landesärztekammer Rheinland-Pfalz Ethik-Kommission	Westpfalz-Klinikum Kaiserslautern Medizinische Klinik III	Kaiserslautern, 67655, Germany
Universitätsklinikum Essen Medizinische Fakultät Der Universität Duisburg-Essen Ethik-Kommission	Universitätsklinikum Essen Klinik Für Nephrologie	Essen, 45122, Germany
Landesamt Für Gesundheit Und Soziales Ethik-Kommission Des Landes Berlin	Universitätsklinik Charité - Campus Benjamin Franklin Medizinische Klinik Mit Schwerpunkt Nephrologie	Berlin, 12203, Germany
Universität Witten/Herdecke Ethik-Kommission	Städtische Kliniken Merheim Medizinische Klinik I Transplantationszentrum	Köln, 51109, Germany
Technische Universität München Fakultät Für Medizin - Ethikkommission	Klinikum Rechts Der Isar Der TU München Nephrologie	München, 81675, Germany
Ludwig-Maximilians-Universität München Klinikum Der Universität Ethik-Kommission	Klinikum Der Universität München Campus Großhadern Transplantationszentrum	München, 81377, Germany
Ethik-Kommission An Der Medizinischen Fakultät Der Universität Leipzig Ethikkommission An Der Universität Regensburg Klinikum Der Universität Regensburg	Universitätsklinikum Leipzig Operatives Department Klinik Und Poliklinik Für Viszeral-, Transplantations-, Thorax- Und Gefäßchirurgie	Leipzig, 04103, Germany
Ethik-Kommission Der Medizinischen Hochschule Hannover	Klinikum Der Universität Regensburg Abteilung Für Nephrologie Medizinische Hochschule Hannover Zentrum Chirurgie Klinik Für Allgemein-, Viszeral- Und Transplantationschirurgie	Regensburg, 93053, Germany
		Hannover, 30625, Germany

Ethics Committee or Institutional Review Board	Department / Organization	City, State/Province, Postal Code Country
Landesamt Für Gesundheit Und Soziales Ethik-Kommission Des Landes Berlin	Charité Universitätsmedizin Berlin Campus Virchow Klinik Für Allgemein-, Visceral- Und Transplantationschirurgie	Berlin, 13353, Germany
National Ethics Committee	N/A	Athens (Address: 284 Mesogeion Avenue, Cholargos), Attica, 15562, Greece
National Ethics Committee	N/A	Athens (Address: 284 Mesogeion Avenue, Cholargos), Attica, 15562, Greece
National Ethics Committee	N/A	Athens (Address: 284 Mesogeion Avenue, Cholargos), Attica, 15562, Greece
National Ethics Committee	N/A	Athens (Address: 284 Mesogeion Avenue, Cholargos), Attica, 15562, Greece
Institutional Review Board	Max Super Specialty Hospital, Unit Of Devki Devi Foundation) (A	Max Super Specialty Hospital, (A Unit Of Devki Devi Foundation) (East Block) 1, Press Enclave Road, Saket, New Delhi, 110017,
Institutional Ethics Committee, Institutional Review Board (IRB) The Chairperson, Ethics Committee & Institutional Review Board	Columbia Asia Hospitals Christian Medical College	Columbia Asia Referral Hospital Yeshwanthpur, 26/1 Brigade Gateway, Malleshwaram W, Bangalore 560055
Institutional Review Board, Clinical Reserach Ethics Committee	P.D.Hinduja Hospital & MRC	Christian Medical College, CMC Campus, Bagayam, Vellore - 632 002. Room No.908, 9th Floor, Lalita Giridhar Building P.D.Hinduja Hospital & MRC, Veer Savarkar Marg, Mahim, Mumbai-16
Rabin MC EC Comittee	RABIN MC	Petach Tikva, 49100, Israel
Souraski (Ichilov) MC EC Comittee	Souraski MC (Ichilov)	Tel Aviv 62239, Israel
Comitato Etico Regione Toscana		Area Vasta Sud Est Presso Azienda Ospedaliera Universitaria Senese Di Siena C/O Uoc Farmacia Aous - Viale Bracci 53100 Siena (Si)
Comitato Etico Per La Sperimentazione		Clinica Della Provincia Di Padova Presso Aou Padova Via Nicolo' Giustiniani, 2 35128 Padova (Pd)
Comitato Etico Milano		Area 3 C/O Asst Grande Ospedale Metropolitano Niguarda Pad. 7 Ala D, 4° Piano Piazza Dell' Ospedale Maggiore, 3 20162 Milano (Mi)
Comitato Etico Indipendente		Presso La Fondazione Ptv Policlinico Tor Vergata Di Roma Viale Oxford, 81 00133 Roma (Rm)
Comitato Etico Indipendente		Dell'azienda Ospedaliarouniversitaria Policlinico S.Orsola - Malpighi Di

Ethics Committee or Institutional Review Board	Department / Organization	City, State/Province, Postal Code Country
		Bologna Via Albertoni Pietro, 15 - Padiglione 3, 40138 Bologna (Bo)
Comitato Etico Interaziendale		A.O. Citta' Della Salute E Della Scienza Di Torino Corso Bramante, 88/90 10126 Torino (To)
Comitato Etico		Dell'universita' Cattolica Del S. Cuore - Fondazione Policlinico Gemelli Largo Agostino Gemelli, 8 00168 Roma (Rm)
Comitato Etico		Interaziendale Dell'azienda Ospedaliera Universitaria Maggiore Della Carita' Di Novara Corso Mazzini 18 28100 Novara (No)
Comitato Etico		Dell'aoa Consorziale Policlinico Di Bari Piazzale Giulio Cesare, 11 70124 Bari (Ba)
Comitato Etico		Per Parma C/O Azienda Ospedaliero- Universitaria Di Parma Via Gramsci, 11/14 43100 Parma (Pr)
Institutional Review Board For Japanese Red Cross Nagoya Daini Hospital	Japanese Red Cross Nagoya Daini Hospital	Nagoya, Aichi, 466-8650 Japan
Institutional Review Board For National Hospital Organization Chiba-East-Hospital	National Hospital Organization Chiba-East-Hospital	Nagoya, Aichi, 466-8650 Japan
Institutional Review Board For Fujita Health University Hospital	Fujita Health University Hospital	Nagoya, Aichi, 466-8650 Japan
Research Ethics Committee	Prince Sultan Military Medical City	PO 7897, Riyadh 11159, Saudi Arabia
Institutional Review Board	Research Center Department, King Faisal Specialist Hospital & Research Center	P.O.Box: 40047, Jeddah: 21499, Kingdom Of Saudi Arabia
Institutional Review Board	Research Executive Administration ,King Fahad Specialist Hospital,	Ammar Bin Thabit St, Al Muraikabat- Dammam 32253, Saudi Arabia
Ministry Of Health- The Standing Committee For Coordination Of Health And Medical Research	Hamad Al Essa Organ Transplant Center	22, Sabah Al-Salem Area; P.O. Box: 569, Postal Code 44000 Kuwait
Hotel Dieu De France Ethics Committee	Ethics Committee Hotel Dieu De France	Achrafieh, P.O. Box 16-6830, Beirut, Lebanon
Hammoud Hospital University Medical Center - Institutional Review Board	Institutional Review Board Hammoud Hospital University Medical Center	Ghassan Hammoud Street, P.O. Box 652, Saida Lebanon
Hammoud Hospital University Medical Center - Institutional Review Board	Institutional Review Board Hammoud Hospital University Medical Center	Ghassan Hammoud Street, P.O. Box 652, Saida Lebanon

Ethics Committee or Institutional Review Board	Department / Organization	City, State/Province, Postal Code Country
Medical Research & Ethics Committee	Ministry Of Health Malaysia C/O Institute For Health Management	Kuala Lumpur, 59000 Malaysia
Medical Research & Ethics Committee	Ministry Of Health Malaysia C/O Institute For Health Management	Kuala Lumpur, 59000 Malaysia
Centro Hospitalario Vicor, S.A De C.V.	NA	Guadalajara., Jalisco; 44520, Mexico
Medisch Ethische Toetsingscommissie	Leids Universitair Medisch Centrum (LUMC) Secretariaat CME (H1-Q)	Postbus 9600 2300 RC Leiden, The Netherlands
Medisch Ethische Toetsingscommissie	Leids Universitair Medisch Centrum (LUMC) Secretariaat CME (H1-Q)	Postbus 9600 2300 RC Leiden, The Netherlands
Medisch Ethische Toetsingscommissie	Leids Universitair Medisch Centrum (LUMC) Secretariaat CME (H1-Q)	Postbus 9600 2300 RC Leiden, The Netherlands
Medisch Ethische Toetsingscommissie	Leids Universitair Medisch Centrum (LUMC) Secretariaat CME (H1-Q)	Postbus 9600 2300 RC Leiden, The Netherlands
Medisch Ethische Toetsingscommissie	Leids Universitair Medisch Centrum (LUMC) Secretariaat CME (H1-Q)	Postbus 9600 2300 RC Leiden, The Netherlands
Medisch Ethische Toetsingscommissie	Leids Universitair Medisch Centrum (LUMC) Secretariaat CME (H1-Q)	Postbus 9600 2300 RC Leiden, The Netherlands
REK-Regional Committees For Medical And Health Research Ethics	REK Sør-Øst D	Gullhaugveien 1-3, 0484 Oslo, Norway Postbox: Postboks 1130, Blindern, 0318 Oslo, Norway
National Kidney And Transplant Institute Research Ethics Committee	National Kidney And Transplant Institute	Quezon City, 1101 Philippines
National Kidney And Transplant Institute Research Ethics Committee	National Kidney And Transplant Institute	Quezon City, 1101 Philippines
Komisja Bioetyczna PUM		Ul. Rybacka 1 70-204 Szczecin"
Komisja Bioetyczna PUM		Ul. Rybacka 1 70-204 Szczecin"
Komisja Bioetyczna PUM		Ul. Rybacka 1 70-204 Szczecin"
Komisja Bioetyczna PUM		Ul. Rybacka 1 70-204 Szczecin"
Comissão De Ética Para A Investigação Clínica	NA	1749-004 Lisboa Portugal
Comissão De Ética Para A Investigação Clínica	NA	1749-004 Lisboa Portugal
Comissão De Ética Para A Investigação Clínica	NA	1749-004 Lisboa Portugal
Comissão De Ética Para A Investigação Clínica	NA	1749-004 Lisboa Portugal
Comissão De Ética Para A Investigação Clínica	NA	1749-004 Lisboa Portugal
LEC Of Federal Research Center Of Transplantology	Federal Research Center Of Transplantology And Artificial	Moscow, 123182, Russia

Ethics Committee or Institutional Review Board	Department / Organization	City, State/Province, Postal Code Country
And Artificial Organs N.A. Academician V.I. Shumakova	Organs N.A. Academician V.I. Shumakova	
LEC Of Scientific-Research Institute Of Emergency Care Named NV Sklifosofskiy	Scientific-Research Institute Of Emergency Care Named NV Sklifosofskiy	Moscow, 129090, Russia
LEC Of Volgograd Regional Uronephrology Center	Volgograd Regional Uronephrology Center	Volzhskiy, Volgograd Region, 404120, Russia
Local Ethics Committee Of Privolzhskiy Regional Medical Centre Of Federal Medical And Biology Agency Of Russia	Privolzhskiy Regional Medical Centre Of Federal Medical And Biology Agency Of Russia	2, Nizhne- Volzhskaya Naberezhnaya, 603001, Nizhniy Novgorod, Russia
LEC Of Sverdlovsk Regional Clinical Hospital # 1	Sverdlovsk Regional Clinical Hospital # 1	Ekaterinburg, 620102, Russia
LEC Of Scientific And Research Institution - Clinic Hospital № 1 Named After Professor S.V. Ochapovski”	Scientific And Research Institution - Clinic Hospital № 1 Named After Professor S.V. Ochapovski”	Krasnodar, 350086, Russia
Ethics Committee Of Military Medical Academy	Military Medical Academy – Center For Organ Transplantation	Belgrade, 11000 Serbia
Ethics Committee Of Military Medical Academy	Military Medical Academy – Center For Organ Transplantation	Belgrade, 11000 Serbia
Ethics Committee Of Military Medical Academy	Military Medical Academy – Center For Organ Transplantation	Belgrade, 11000 Serbia
Centralised Institutional Review Board	Domain E	Singapore, Singapore 150168
Etická Komisia UN L. Pasteura Košice Rastislavova 43 041 90 Košice	UN L. Pasteura Košice Transplantačné Pracovisko I.Chirurgickej Kliniky	Trieda SNP 1 041 66 Košice
Etická Komisia FnsP F.D.Roosevelta Nám. L.Svobodu 1 975 17 Banská Bystrica	FnsP F.D.Roosevelta Nefrologicko - Transplantačné Oddelenie	Nám. L.Svobodu 1 975 17 Banská Bystrica
Etická Komisia UN Bratislava Nemocnica Ak. L. Déreza Limbová 5 833 05 Bratislava	UN Bratislava Nemocnica Ak. L. Déreza Urologická Klinika LFUK A SZU S Centrom Pre Transplantácie Obličiek	Limbová 5 833 05 Bratislava
Etická Komisia Univerzitnej Nemocnice Martin Transplantačné Centrum Kollárova 2 036 59 Martin	Univerzitná Nemocnica Martin Klinika Transplantačnej A Cievnej Chirurgie	Kollárova 2 036 59 Martin
National Medical Ethics Committee	Ministry Of Health	1000 Ljubljana, Slovenia

Ethics Committee or Institutional Review Board	Department / Organization	City, State/Province, Postal Code Country
University Of Cape Town Human Research Ethics Committee	Faculty Of Health Sciences	Cape Town, Western Cape 7925
Institutional Review Board	Asan Medical Center	Seoul 88, Olympic-Ro 43-Gil, Songpa-Gu, 05505, Korea
Institutional Review Board	Yonsei University Health System	Seoul, 250, Seongsanno(134 Sinchon-Dong), Seodaemun-Gu, 03722, Korea
Institutional Review Board	Samsung Medical Center	Seoul, 81, Irwollo, Gangnam-Gu, 06351, Korea
Comité Ético De Investigación Clínica Parc De Salut MAR	Hospital Del Mar – CEIC Parc De Salut Mar	C/ Dr. Aiguader, 88 08003 Barcelona
Comité Ético De Investigación Clínica Parc De Salut MAR	Hospital Del Mar – CEIC Parc De Salut Mar	C/ Dr. Aiguader, 88 08003 Barcelona
Comité Ético De Investigación Clínica Parc De Salut MAR	Hospital Del Mar – CEIC Parc De Salut Mar	C/ Dr. Aiguader, 88 08003 Barcelona
Comité Ético De Investigación Clínica Parc De Salut MAR	Hospital Del Mar – CEIC Parc De Salut Mar	C/ Dr. Aiguader, 88 08003 Barcelona
Comité Ético De Investigación Clínica Parc De Salut MAR	Hospital Del Mar – CEIC Parc De Salut Mar	C/ Dr. Aiguader, 88 08003 Barcelona
Comité Ético De Investigación Clínica Parc De Salut MAR	Hospital Del Mar – CEIC Parc De Salut Mar	C/ Dr. Aiguader, 88 08003 Barcelona
Comité Ético De Investigación Clínica Parc De Salut MAR	Hospital Del Mar – CEIC Parc De Salut Mar	C/ Dr. Aiguader, 88 08003 Barcelona
Comité Ético De Investigación Clínica Parc De Salut MAR	Hospital Del Mar – CEIC Parc De Salut Mar	C/ Dr. Aiguader, 88 08003 Barcelona
Comité Ético De Investigación Clínica Parc De Salut MAR	Hospital Del Mar – CEIC Parc De Salut Mar	C/ Dr. Aiguader, 88 08003 Barcelona
Comité Ético De Investigación Clínica Parc De Salut MAR	Hospital Del Mar – CEIC Parc De Salut Mar	C/ Dr. Aiguader, 88 08003 Barcelona
Regionala Etikprövningsnämnden I Stockholm		Karolinska Institutet I Solna Widerströmska Huset Tomtebodavägen 18A, 171 65 Solna, Sweden
Regionala Etikprövningsnämnden I Stockholm		Karolinska Institutet I Solna Widerströmska Huset Tomtebodavägen 18A, 171 65 Solna, Sweden
Regionala Etikprövningsnämnden I Stockholm		Karolinska Institutet I Solna Widerströmska Huset Tomtebodavägen 18A, 171 65 Solna, Sweden
Kantonale Ethikkommission Bern		Bern, 3010, Switzerland
Research Ethics Committee	National Taiwan University Hospital	Taipei, 10048 Taiwan
Institutional Review Board	Taichung Veterans General Hospital	Taichung, 40705 Taiwan
Institutional Review Board	National Cheng Kung University Hospital	Tainan, 70403 Taiwan

Ethics Committee or Institutional Review Board	Department / Organization	City, State/Province, Postal Code Country
PMK	Institutional Review Board Royal Thai Army Medical Department	Royal Thai Army Medical Department, Phramongkutklao Hospital.
Rajavithi	Ethics Committees On Researches Involving Human Subjects Rajavithi Hospital	Rajavithi Hospital
RAMA	Ethical Clearance Committee On Human Right Related To Researches Involving Human Subjects Faculty Of Medicine,	Ramathibodi Hospital, Mahidol University
Clinical Research Ethics Committee	T.C. Istanbul University Istanbul Faculty Of Medicine,	Istanbul University Istanbul Faculty Of Medicine Fatih / Çapa Istanbul 34093, Turkey
Clinical Research Ethics Committee	T.C. Istanbul University Istanbul Faculty Of Medicine,	Istanbul University Istanbul Faculty Of Medicine Fatih / Çapa Istanbul 34093, Turkey
Clinical Research Ethics Committee	T.C. Istanbul University Istanbul Faculty Of Medicine,	Istanbul University Istanbul Faculty Of Medicine Fatih / Çapa Istanbul 34093, Turkey
Western Institutional Review Board		1019 39th Avenue SE Suite 120 Puyallup, WA 98374-2115
Institutional Review Board	Porter Adventist Hospital	Joint IRB Office, 2525 South Downing Street, Denver, Colorado 80210-5876
Institutional Review Board	The University Of Utah	75 South 2000 East Salt Lake City, UT 84112
Institutional Review Board	The University Of Texas	6410 Fannin Street, Suite 1100, Houston, Texas 77030
Institutional Review Board	Baylor Research Institute	3310 Live Oak, Suite 501- Dallas, TX 75204
Institutional Review Board	Baylor Research Institute	3310 Live Oak, Suite 501- Dallas, TX 75204
Institutional Review Board	Houston Methodist Research Institute	6670 Bertner Houston, TX 77030
Institutional Review Board For Health Sciences Research	Universty Of Verginia	PO Box 800483, Charlottesville, VA 22908
Institutional Review Board	Washington University	660 South Euclid Ave., Campus Box 8089, St Louis
Cedars-Sinai Institutional Review Board		8383 Wilshire Blvd Suite 742, Beverly Hills, CA 90211
Institutional Review Board	University Of Sothern California Health Sciences	LAC+USC Medical Center , General Hospital Suite 4700, 1200 North State Street, Los Angeles, CA 90033
Institutional Review Board	Baylor College Of Medicine	One Baylor Plaza, 600D, Houston , Texas 77030
Institutional Review Board		1019 39th Avenue SE Suite 120 Puyallup, WA 98374-2115
Institutional Review Board	University Of Maryland, Baltimore	Human Research Protections Office Biopark I 800 W. Baltimore Street, Suite 100 Baltimore, MD 21201
Institutional Review Board	Lahey Hospital And Medical Center	41 Mall Road, Burlington, MA 01805
Institutional Review Board	Saint Barnabas Medical Center	94 Old Short Hills Road, Livingston, NJ 07039
COMMITTEE ON CLINICAL Lnvestigations	Beth Israel Deaconess Medical Center	330 Brookline Ave. Boston, MA 02215

Ethics Committee or Institutional Review Board	Department / Organization	City, State/Province, Postal Code Country
Institutional Review Board		CORO West, Suite 1.300 One Hoppin Street Providence, RI 02903
Institutional Review Board	DUHS Institutional Review Board	2424 Erwin Road, Suite 405, Durham, NC
Institutional Review Board	Partners Human Research Committee	399 Revolution Drive, Suite 710 Somerville, MA 02145
Institutional Review Board	DUHS Institutional Review Board	2424 Erwin Road, Suite 405, Durham, NC
Institutional Review Board	Pinnacle Health Institutional Review Board	Bloom Outpatient Center Suite 109, 4310 Londonderry Road, Harrisburg PA 17109
Institutional Review Board	Medical College Of Wisconsin / Froedtert Hospital	8701 Watertown Plank Road Milwaukee, WI 53226-0509
Institutional Review Board	Medical School Institutional Review Board	2800 Plymouth Road, Building 520, Room 3214, Ann Arbor MI 48109-2800
Institutional Review Board	University Of Illinois At Chicago	203 Administrative Office Building 1737 N Kst Polk Street Chicago, Illinois 60612-7227
Institutional Review Board		CFP-Basement 046 2799 West Grand Boulevard Detroit, MI 48202-2689
Institutional Review Board	Western Institutional Review Board	1019 39th Avenue SE Suite 120 Puyallup, WA 98374-2115
Institutional Review Board		Medical Center Boulevard, Winston-Salem, NC 27157-1023
Institutional Review Board	University Of California	2921 Stockton Blvd., Suite 1400 Sacramento, CA 95817
Institutional Review Board	Western Institutional Review Board	1019 39th Avenue SE Suite 120 Puyallup, WA 98374-2115
Institutional Review Board		Medical School Building 52 Mason Farm Road CB #7097 Chapel Hill, NC 27599-7097
Institutional Review Board	University Of California, San Francisco	Human Research Protection Program, Box 0962 3333 California Street, Suite 315 San Francisco, CA 94143
Local Institutional Review Board	Biomedical Research Alliance Of New York Institutional Review Board	1981, Marcus Avenue, Suite 210, Lake Success, NY 11042
Institutional Review Board	Western Institutional Review Boards	1019, 39th Avenue SE Suite 120, Puyallup, WA 98374-2115
Local Institutional Review Board	Vanderbilt University, Institutional Review Board	504, Oxford House, Nashville, Tennessee, 37232-4315
Institutional Review Board	University Of Buffalo, The State University Of New York, Health Sciences IRB	150, Parker Hall, Buffalo, NY 14214-8004
Institutional Review Board	Sharp Healthcare Institutional Review Board	8695, Spectrum Center Blvd, San Diego, CA 92123
Institutional Review Board	Cleveland Clinic IRB	OS-1, Cleveland Clinic, 9500 Euclid Avenue, Cleveland, OH 44195
Institutional Review Board	University Hospitals Case Medical Centre	Institutional Review Board For Human Investigation, 11100 Euclid Avenue, Lakeside 1400, Cleveland, Ohio 44106
Institutional Review Board	Loma Linda Institutional Review Board	24887, Taylor Street, Suite 202, Loma Linda, CA 92350