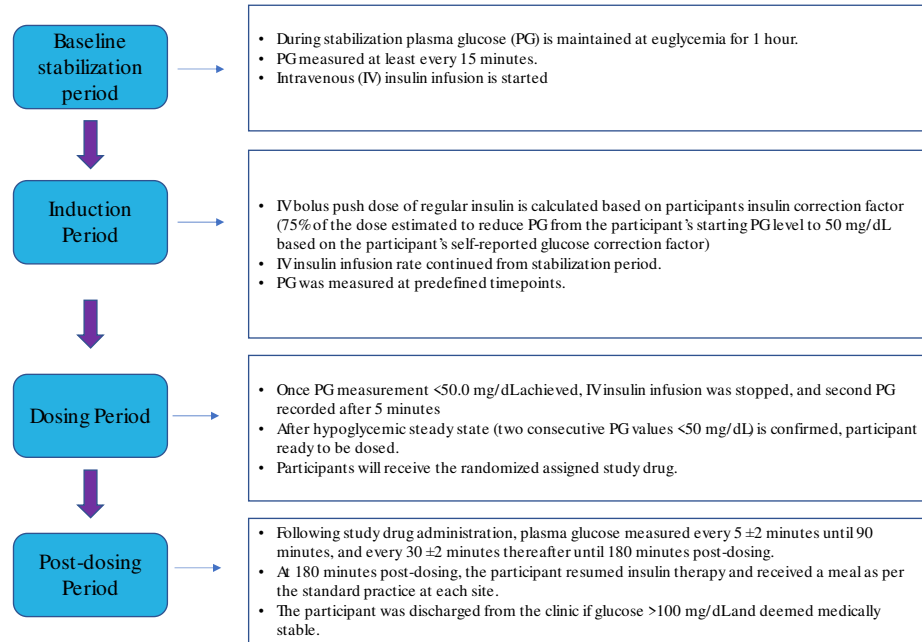


Supplemental Figure 1. Hypoglycemia Induction Study Procedure

See PDF document

Supplemental Figure 1. Hypoglycemia Induction Study Procedure



Supplemental Table 1. Analysis of Plasma Glucose Parameters After Receiving Glucagon by Study and Treatment

Parameter	Statistic	XSGP-301 ^a		XSGP-303 ^a	
		GAI 1 mg (N=78)	GEK 1mg (N=79)	GAI 1 mg (N=76)	GEK 1 mg (N=78)
C_{max} (mg/dL)	n	78	79	76	78
	Mean ± SD	202.73 ± 41.796	193.49 ± 42.247	238.32 ± 45.626	228.11 ± 46.567
	Range	111.0 – 304.5	102.0 – 303.5	130.0 – 321.5	138.5 – 327.0
	LS Mean Difference ± SE (95% CI) ^b		9.93 ± 4.923 (0.125, 19.741)		10.99 ± 4.119 (4.135, 17.849)
	p-value		0.047		0.009
T_{max} (min)	n	78	79	76	78
	Mean ± SD	111.27 ± 33.507	100.44 ± 42.722	125.67 ± 33.513	113.89 ± 31.908
	Range	60.0 – 240.0	45.0 – 240.0	59.9 – 181.5	54.2 – 181.2
	LS Mean Difference ± SE (95% CI) ^b		9.62 ± 4.803 (0.049, 19.184)		NA ^c
	p-value		0.049		Period 1: 0.3722 ^c Period 2: 0.0570 ^c
AUC₀₋₉₀ (mg*min/dL)	n	78	79	76	78
	Mean ± SD	11651.37 ± 2406.856	12260.36 ± 2134.170	13312.63 ± 1986.227	13950.81 ± 2093.808
	Range	5263.9 – 18378.0	7089.5 – 16761.3	8478.4 – 18705.4	9987.4 – 18762.5
	LS Mean Difference ± SE (95% CI) ^b		-545.17 ± 226.863 (-997.107, -93.237)		-615.59 ± 192.370 (-935.864, -295.317)
	p-value		0.019		0.002

GAI = Glucagon Auto-Injector; GEK = Glucagon Emergency Kit

^a Analysis is conducted for all randomized subjects based on actual treatment received. XSGP-301 statistics are based on Modified Intent-to-Treat Population. XSGP-303 statistics are based on Intent-to-Treat Population.

^b Mixed Model was applied to compare difference in treatment groups accounting for period and sequence as covariates

^c Non Normality was observed, and log transformation did not resolve. A non-parametric Kruskal-Wallis Test was applied excluding other covariates and conducted for each of the treatment periods separately.

Supplemental Table 2: Non-inferiority Analysis of Failure Scores by Study and Analysis Population

Outcome:	Statistic	XSGP-301			XSGP-303	
		ITT Population	PrPP Population	RePP Population	ITT Population	PP Population
Composite Endpoint: Failure to achieve a Plasma Glucose > 70 mg/dL or an increase in Plasma Glucose by ≥ 20 mg/dL within 30 minutes After Receiving Glucagon	N	80	80	80	81	73
	Dht	0.029	0.039	0.030	0.009	0.000
	SE	0.018	0.019	0.018	0.005	0.000
	Dht + Confidence Bound ^a	0.075	0.087	0.077	0.022	0.000

N = Number of patients for analysis type

Dht = For each Subject, derived score is the difference in failure scores between treatment and control.

ITT = Intent-to-Treat Population all subjects randomized.

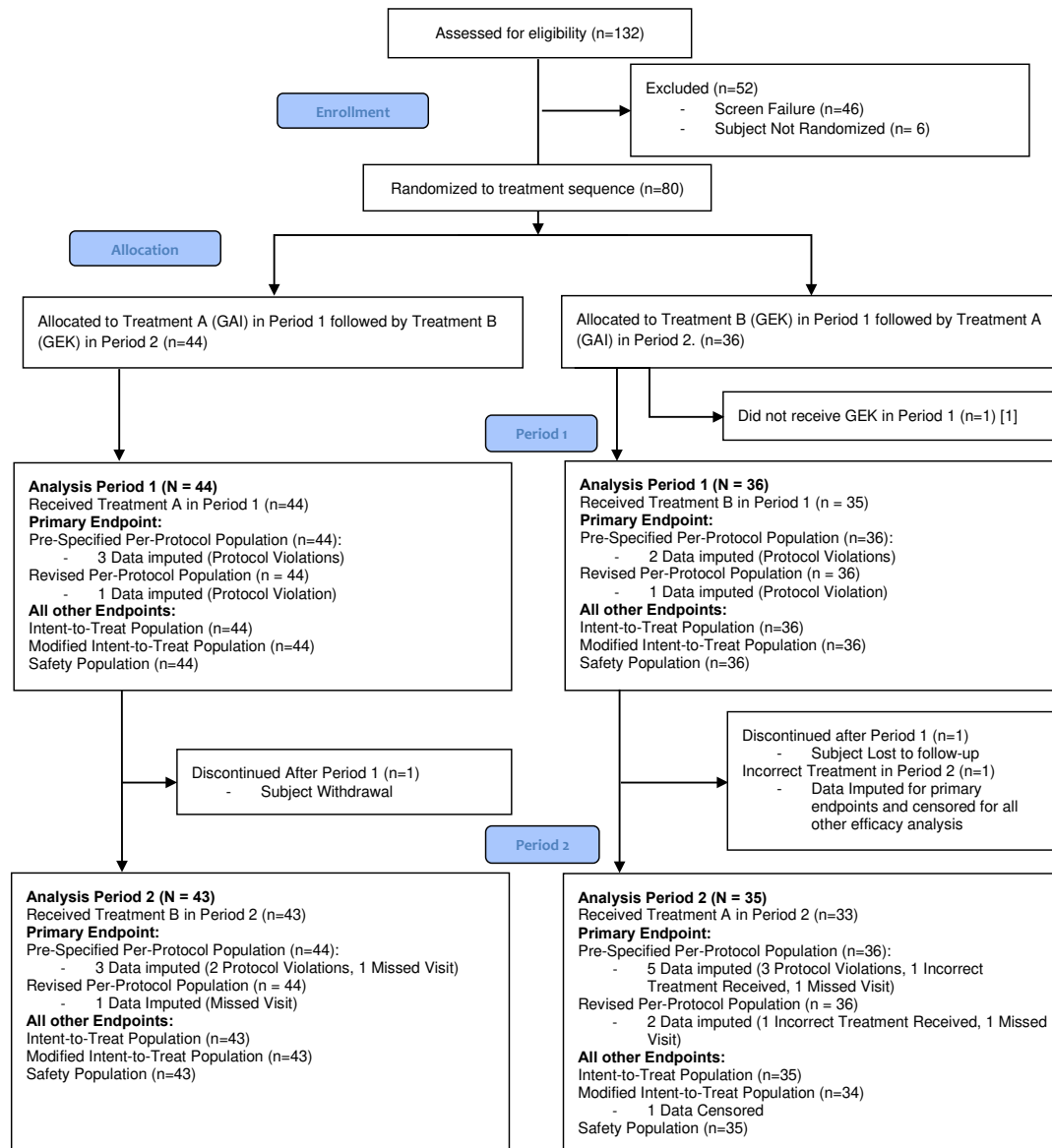
PrPP = Pre-Specified Per Protocol Population, for XSGP-301 includes observations in the ITT Population where observations were set to missing for visits where a major protocol violation occurred based on pre-specified criteria for major violation and analyzed by actual treatment received.

RePP = Revised Per Protocol Population, for XSGP-301 includes observations in the mITT Population where observations were set to missing for visits where a major protocol violation occurred based on revised criteria for major violation and analyzed by actual treatment received.

PP = Per Protocol Population, for XSGP-303 were all randomized subjects who, during both study periods, successfully completed the insulin induction procedure, fulfill the criteria for having achieved a hypoglycemic steady state, and successfully receive a dose of both study drugs.

^a One-sided 95% confidence was 2.6 * SE for XSGP-301 and 2.8 * SE for XSGP-303.

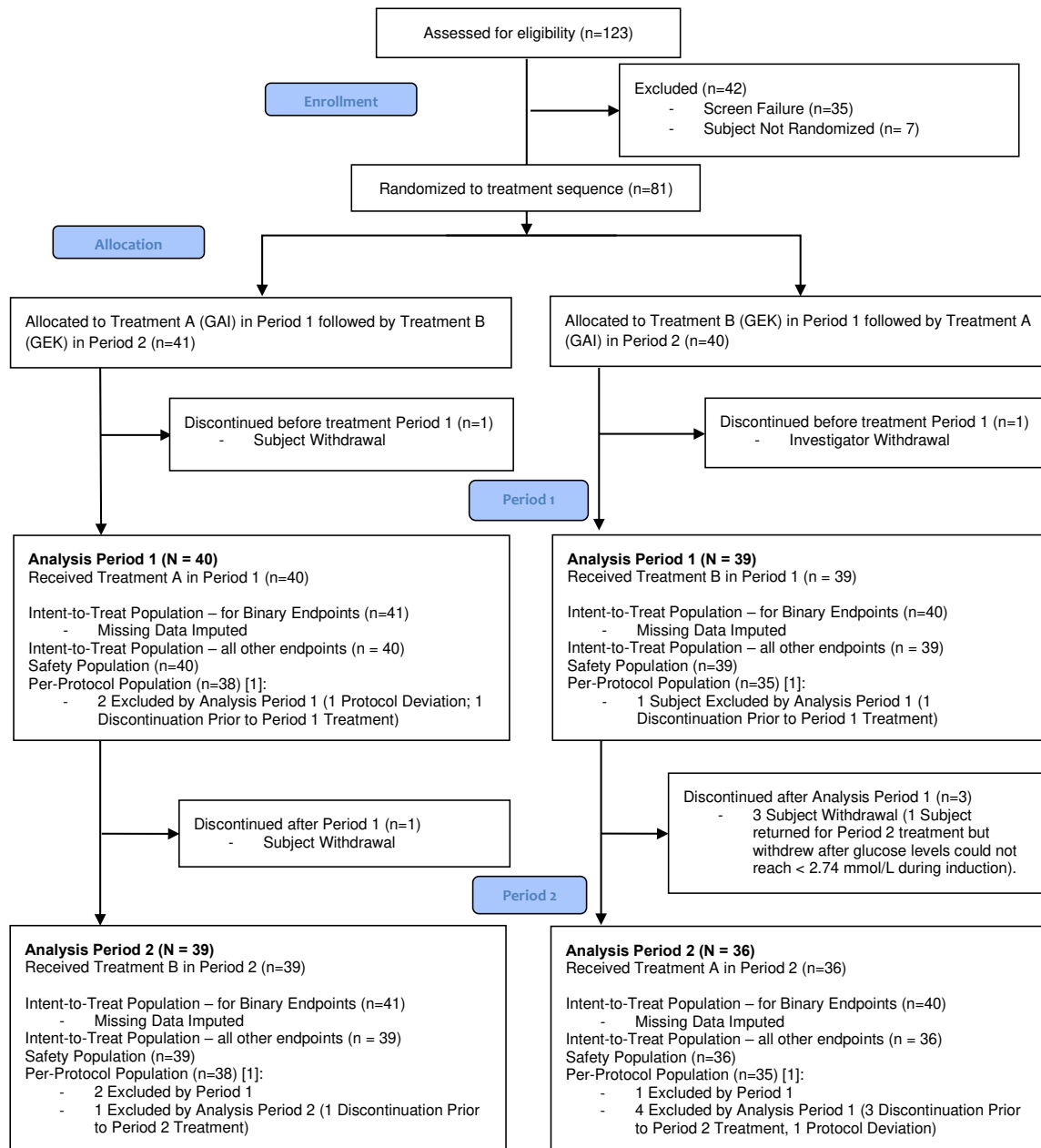
Supplemental Figure 2: Subject Disposition XSGP-301



GAI = Glucagon Auto-Injector
 GEK = Glucagon Emergency Kit

[1] One Subject received treatments in reverse order than their planned treatment sequence (Planned: BA; Actual: AB). This subject was included in all Analysis populations and analyzed according to actual treatment received in the Safety, Modified-Intent-to-Treat, and Per Protocol Populations.

Supplemental Figure 3: Subject Disposition XSGP-303



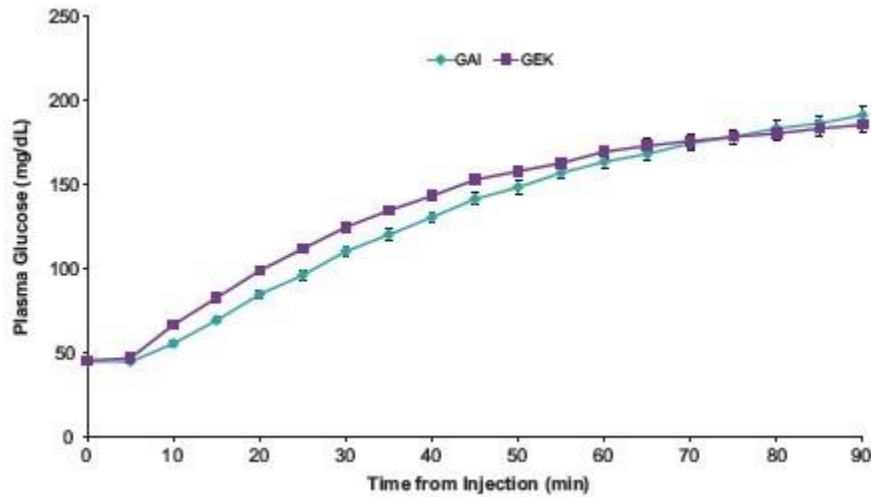
GAI = Glucagon Auto-Injector

GEK = Glucagon Emergency Kit

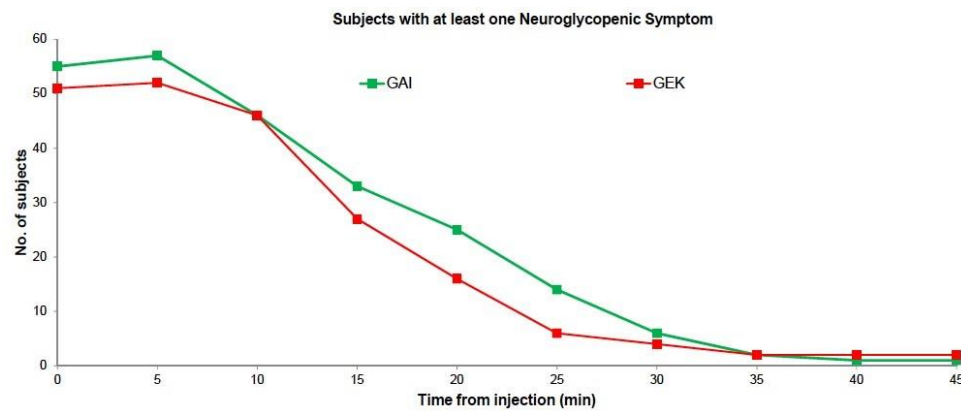
[1] Per Protocol Analysis Population includes subjects who received both study drugs per treatment sequence and no major protocol deviations.

Supplement Figure 4. Mean plasma glucose levels over time (A); time to resolution of neuroglycopenic symptoms (B); and mean (SD) total symptom score, neuroglycopenic score, and autonomic symptom score (C) after Glucagon Auto-Injector (GAI) and Glucagon Emergency Kit (GEK) in XSGP-301.

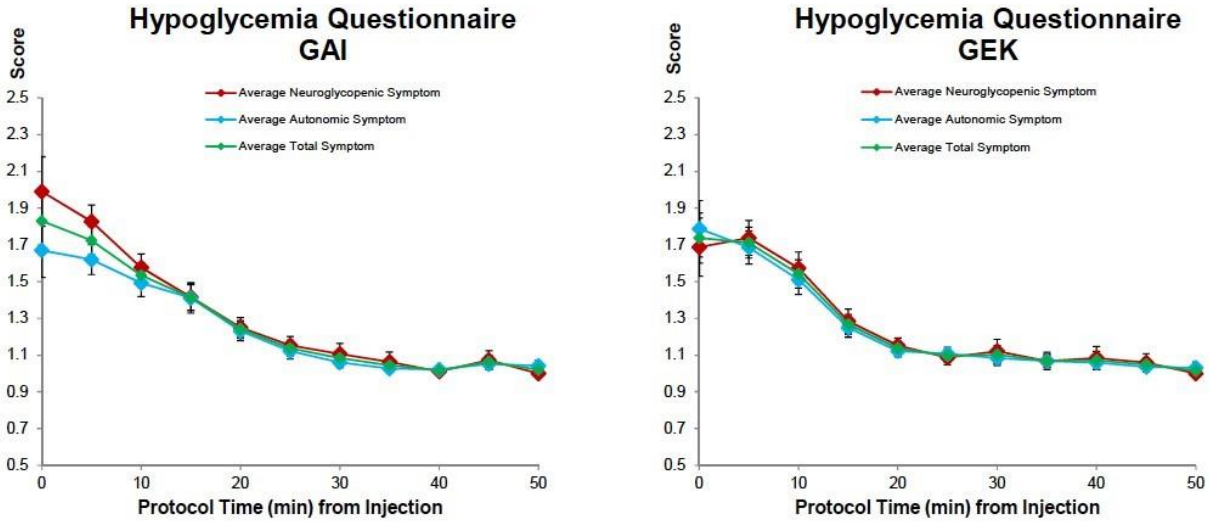
A



B



C



Supplemental Figure 5. Mean (standard deviation) plasma glucose concentrations with GAI by ethnicity and race for the first 12 subjects in each population, which included: non-Hispanic Whites (n=12), Hispanic Whites (n=4), African-Americans (n=4), and other (n=3) had plasma glucose concentrations obtained to evaluated glucose PK.

