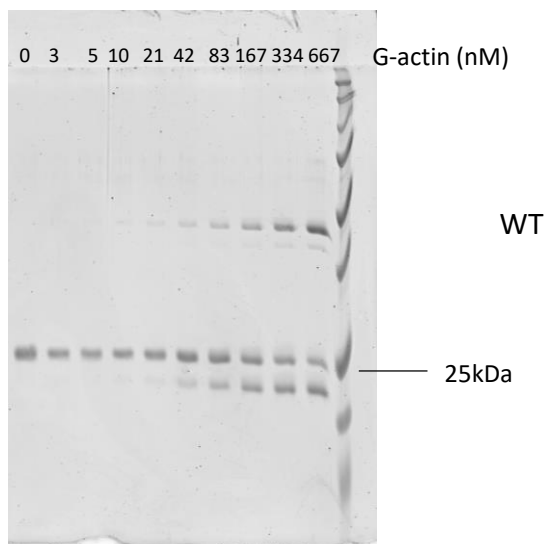
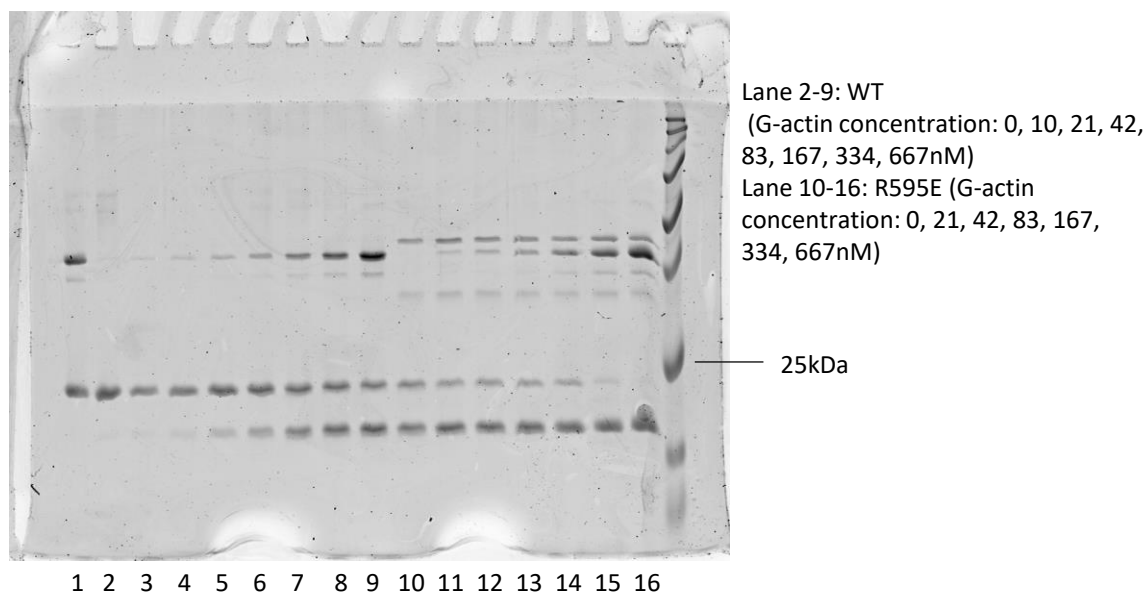


Original gels for Extended Data Fig. 2

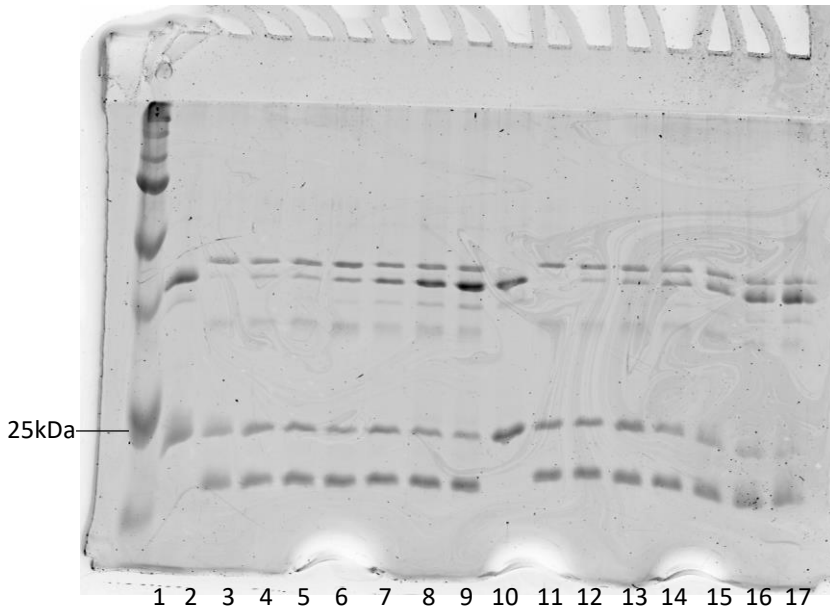
EXP 12.0 Phos-tag gel



EXP 12.2 Phos-tag gel



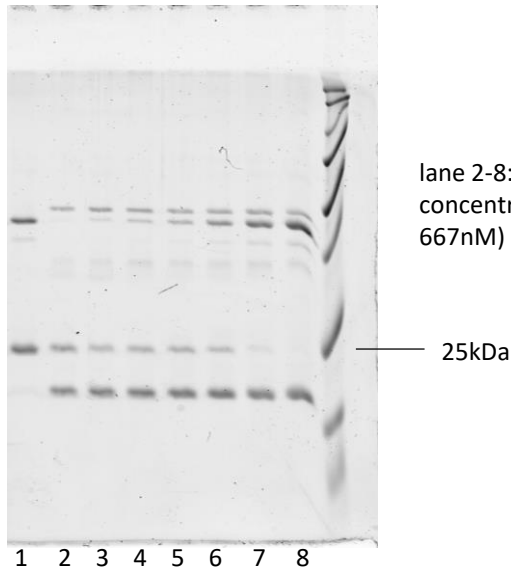
EXP 12.2 Phos-tag gel



Lane 3-9: F592A_R595E (G-actin concentration: 0, 21, 42, 83, 167, 334, 667nM)

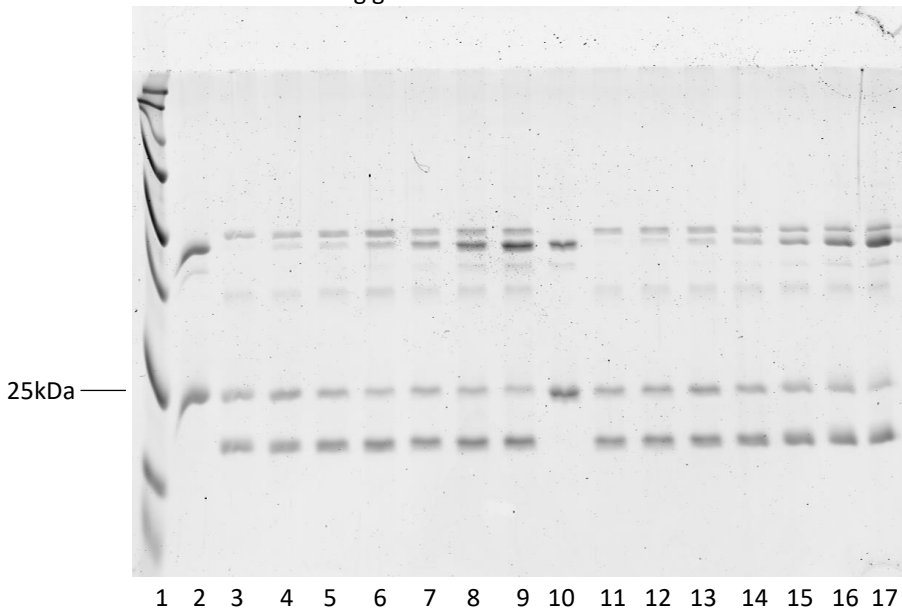
lane 11-17: F592A_R595A (G-actin concentration: 0, 21, 42, 83, 167, 334, 667nM)

EXP 12.1 Phos-tag gel



lane 2-8: R595E (G-actin concentration: 0, 21, 42, 83, 167, 334, 667nM)

EXP 12.1 Phos-tag gel



Lane 3-9: F592A_R595E (G-actin concentration: 0, 21, 42, 83, 167, 334, 667nM)

lane 11-17: F592A_R595A (G-actin concentration: 0, 21, 42, 83, 167, 334, 667nM)