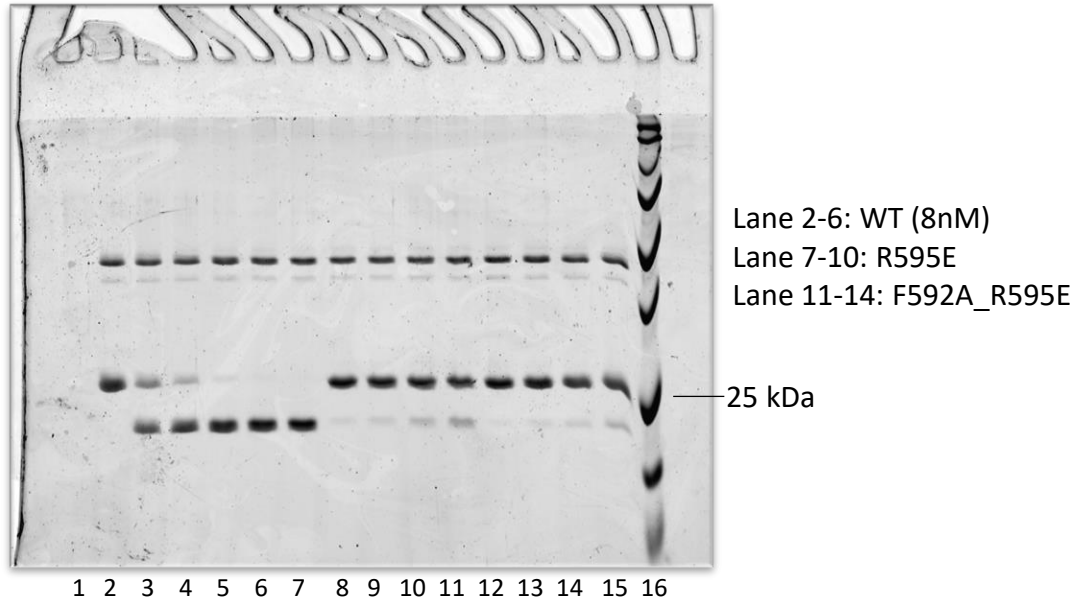
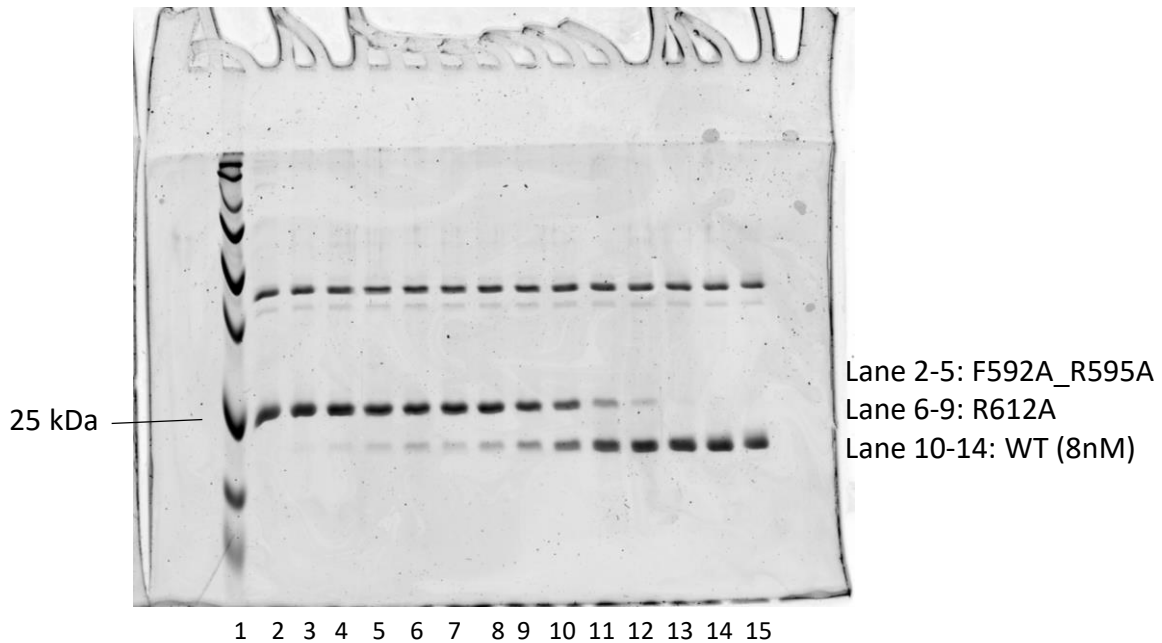


Original gels for Fig. 2a

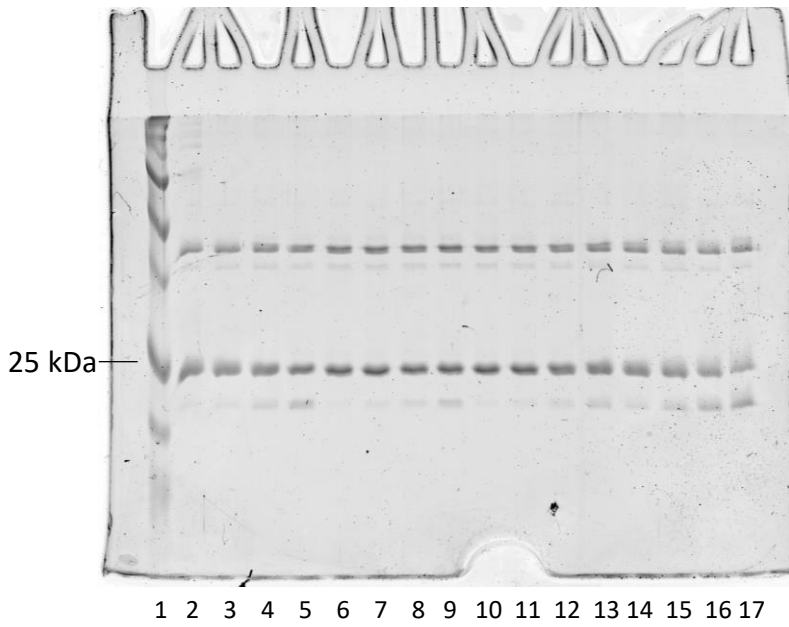
Phos-tag gel 1 (R15/PP1A 8nM)



Phos-tag gel 2 (R15/PP1A 8nM)

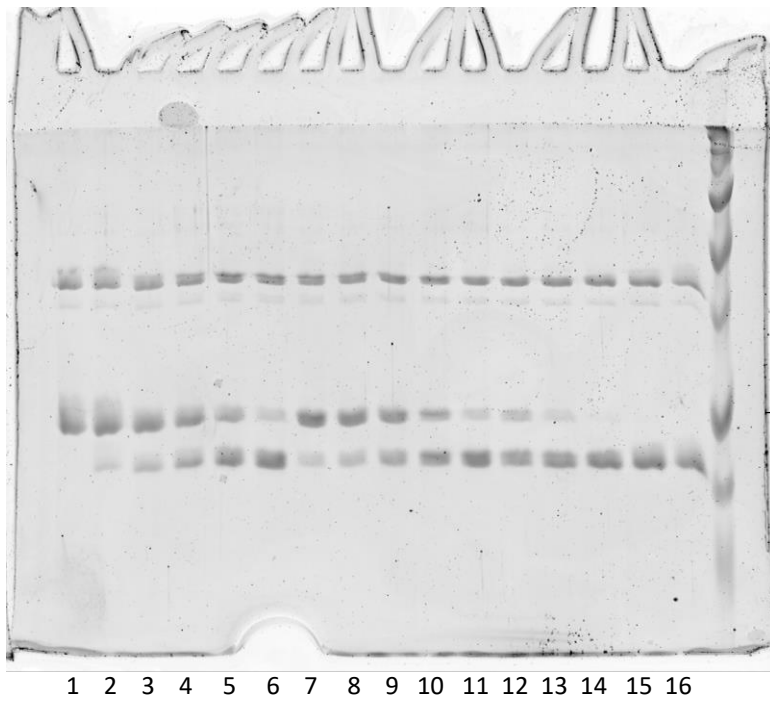


Phos-tag gel 3



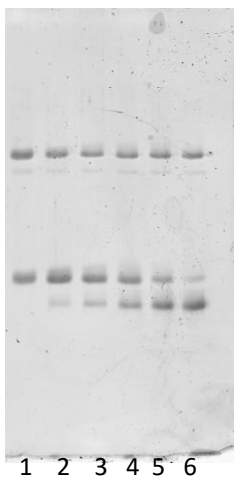
Lane 2-5: R595E
Lane 6-9: F592A_R595E
Lane 10-13: F592A_R595A
Lane 14-17: R612

Phos-tag gel 4



Lane 2-6: WT (2nM)
Lane 7-11: WT (2nM)
Lane 11-16: WT (8nM)

Phos-tag gel 5



Lane 1-6: WT (2nM)