

Mortality Risk Factors of COVID-19 Infection in Kidney Transplantation Recipients: A Systematic Review and Meta-Analysis of Cohorts and Clinical Registries

Suwasin Udomkarnjananun, MD,^{1,2,3} Stephen J. Kerr, PhD,^{4,5} Natavudh Townamchai, MD,^{1,2,3} Paweena Susantitaphong, MD, PhD,¹ Wasee Tulvatana, MD,⁶ Kearkiat Praditpornsilpa, MD,¹ Somchai Eiam-Ong, MD,¹ Yingyos Avihingsanon, MD^{1,2,3}

¹Division of Nephrology, Department of Medicine, Faculty of Medicine, Chulalongkorn University and King Chulalongkorn Memorial Hospital, Bangkok, Thailand

²Renal Immunology and Transplantation Research Unit, Faculty of Medicine, Chulalongkorn University, Bangkok, Thailand

³Excellence Center for Solid Organ Transplantation, King Chulalongkorn Memorial Hospital, Bangkok, Thailand

⁴Research Affairs, Faculty of Medicine, Chulalongkorn University, Bangkok, Thailand

⁵The Kirby Institute, University of New South Wales, Sydney, NSW, Australia

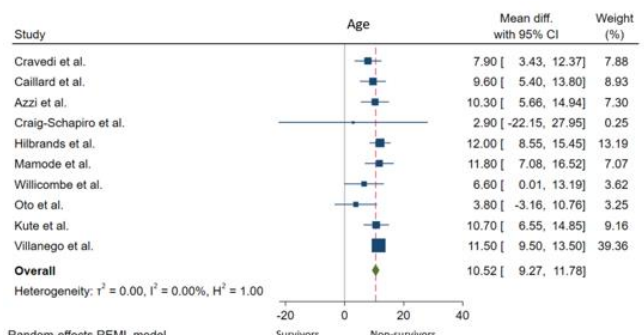
⁶Department of Ophthalmology, Faculty of Medicine, Chulalongkorn University and King Chulalongkorn Memorial Hospital, Bangkok, Thailand

Correspondence: Suwasin Udomkarnjananun, Division of Nephrology, Department of Medicine, Faculty of Medicine, Chulalongkorn University, 1873 Rama IV Road, Bangkok, Thailand, 10330.

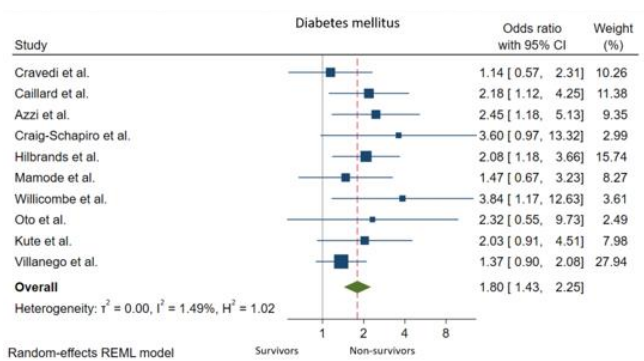
Supplementary Table S1: Quality assessment of the included studies using the Newcastle-Ottawa Quality Assessment Scale.

Authors	Selection (From total of ●●●●)	Comparability (From total of ●●)	Outcome (From total of ●●●)
Bossini et al.	●●●●	●●	●●
Cravedi et al.	●●●●	●●	●●●
Caillard et al.	●●●●	●●	●●●
Azzi et al.	●●●●	●●	●●●
Craig-Schapiro et al.	●●●●	●●	●●●
Hilbrands et al.	●●●●	●●	●●●
Mamode et al.	●●●●	●●	●●
Willicombe et al.	●●●●	●●	●●
Oto et al.	●●●●	●●	●●●
Kute et al.	●●●●	●●	●●●
Villanego et al.	●●●●	●●	●●●
Alshaqqaq et al.	●●●●	●●	●●
Requiao-Moura et al.	●●●●	●●	●●

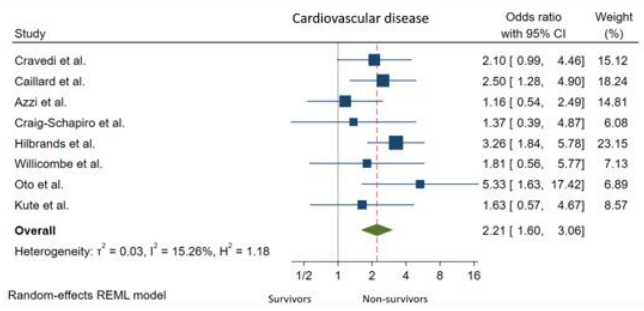
Supplementary Figure S1: Forest plot of patient characteristics that were significantly associated with mortality.



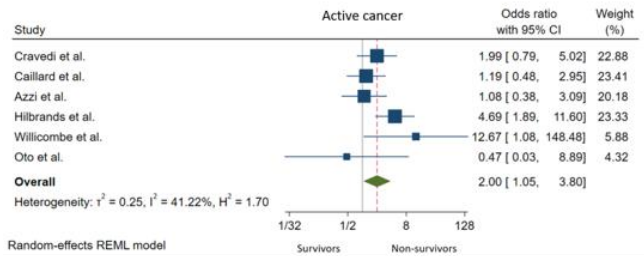
Random-effects REML model



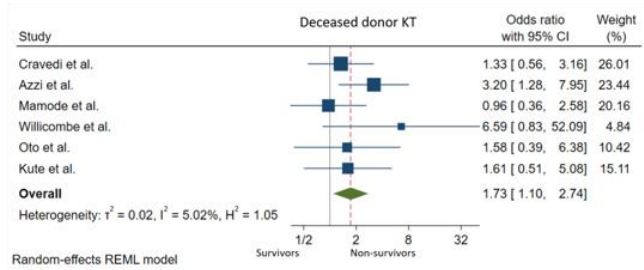
Random-effects REML model



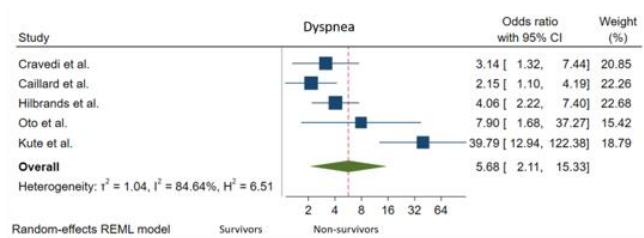
Random-effects REML model



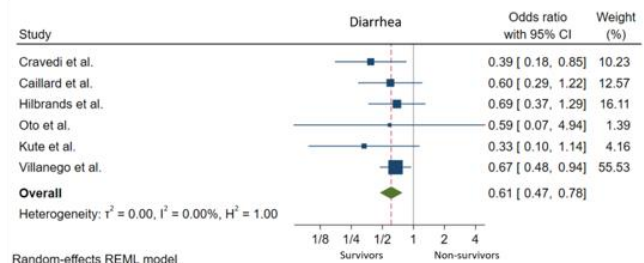
Random-effects REML model



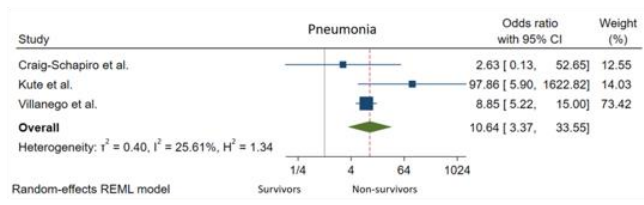
Random-effects REML model



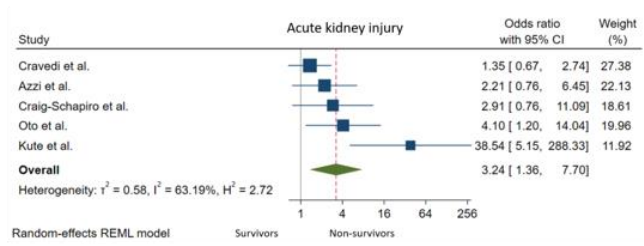
Random-effects REML model



Random-effects REML model

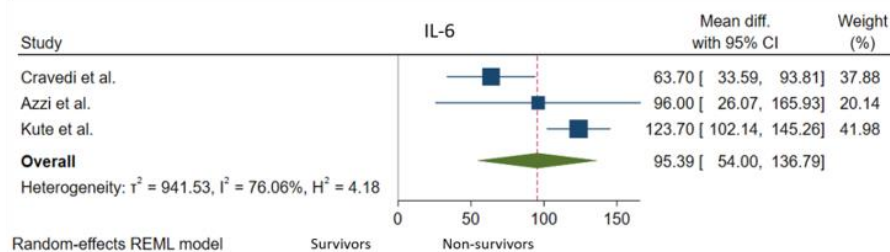
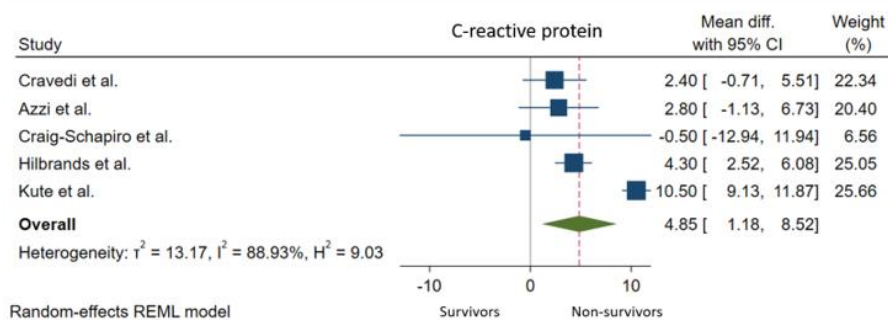
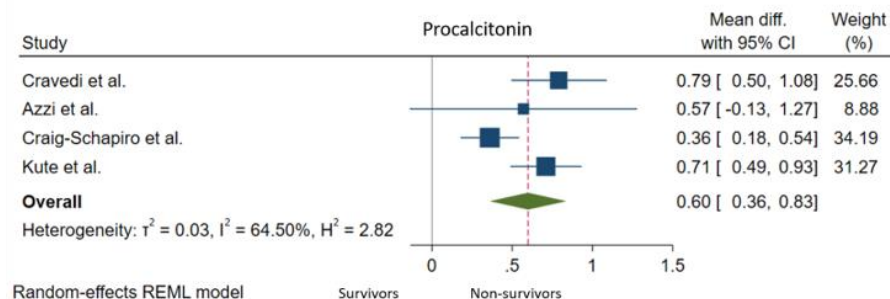
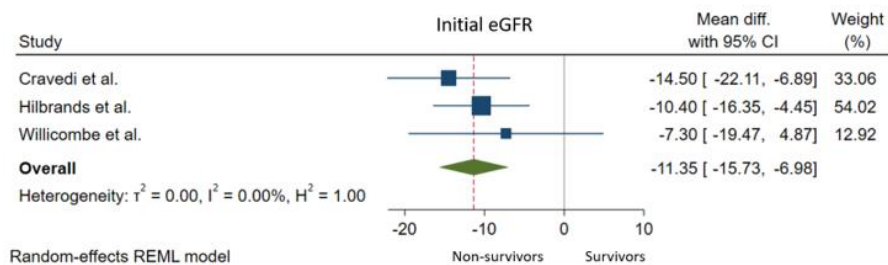


Random-effects REML model



Random-effects REML model

Supplementary Figure S2: Forest plot of laboratory investigations that were significantly associated with mortality.



Supplementary Figure S3: Forest plot of treatments received that were significantly associated with mortality.

