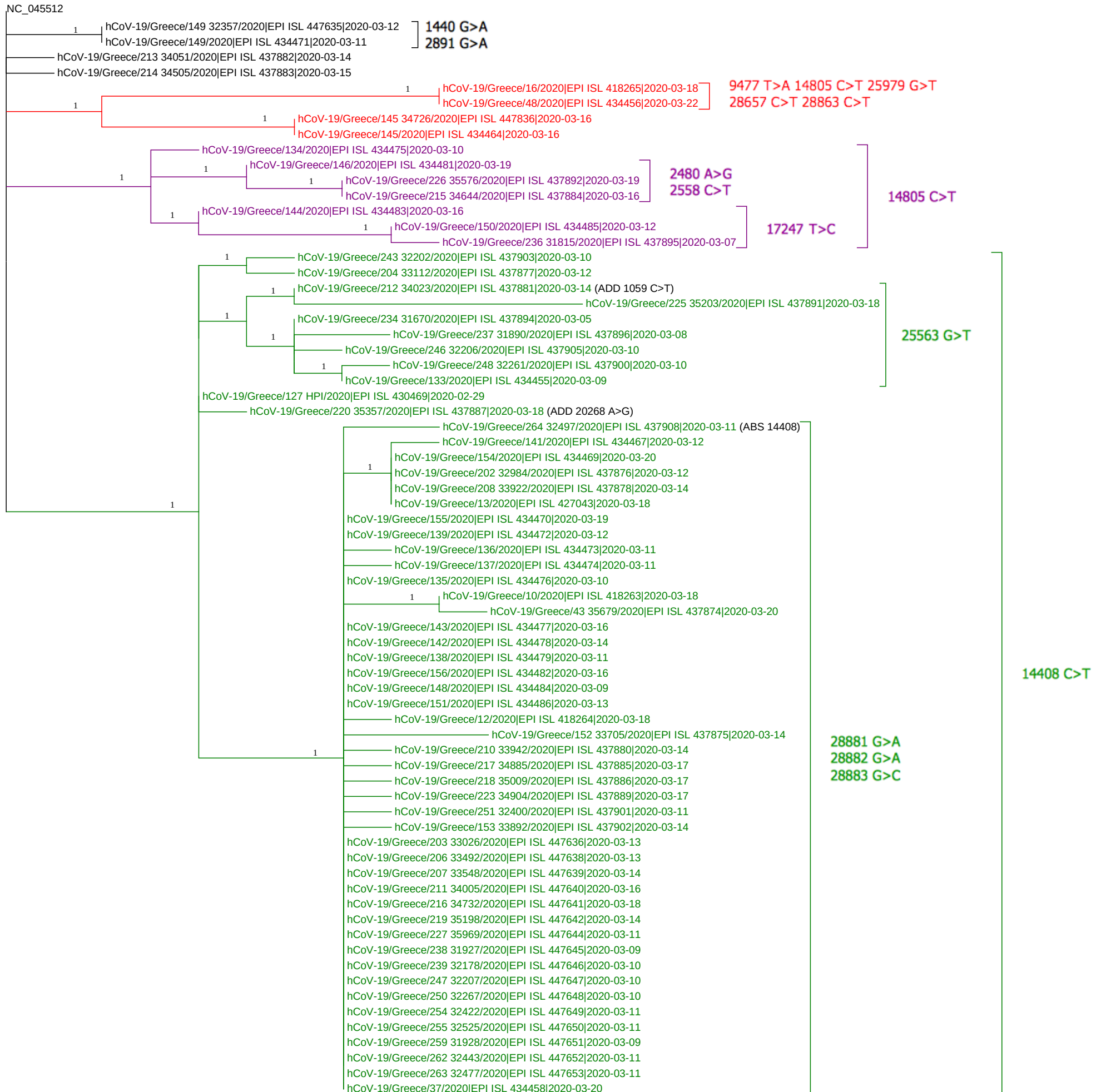


# Greece

**SS1** = C<sup>8782</sup>T, T<sup>28144</sup>C  
**SS2** = G<sup>26144</sup>T  
**SS3** = G<sup>11083</sup>T  
**SS2B** = G<sup>26144</sup>T, G<sup>11083</sup>T  
**SS4** = C<sup>241</sup>T, C<sup>3037</sup>T A<sup>23403</sup>G  
**Black** = unclassified/ambiguous



0.00002