

Sex specific prognostic effect of CD66b-positive Tumor-infiltrating neutrophils (TANs) in gastric and esophageal adenocarcinoma

Gastric Cancer

Alexander Quaas^{2#}, Aylin Pamuk^{1#}, Sebastian Klein², Jennifer Quantius², Jan Rehkaemper², Atakan G. Barutcu¹, Josef Rueschoff⁴, Thomas Zander³, Florian Gebauer¹, Axel Hillmer², Reinhard Buettner², Wolfgang Schroeder¹, Christiane J. Bruns¹, Heike Löser², Birgid Schoemig-Markiefka^{2#} and Hakan Alakus^{1#}

1 Department of General, Visceral, Cancer and Transplantation Surgery, University Hospital Cologne, Cologne (Germany)

2 Institute of Pathology, University Hospital Cologne, Cologne (Germany)

3 University of Cologne, Department I of Internal Medicine, Center for Integrated Oncology Aachen Bonn Cologne Duesseldorf; Gastrointestinal Cancer Group Cologne GCGC

4 Institute of Pathology, Nordhessen and Targos Molecular Pathology GmbH, Kassel, (Germany)

contributed equally to the work

Correspondence to

PD Dr med Hakan Alakus

Department of General, Visceral, Cancer and Transplantation Surgery

University Hospital Cologne

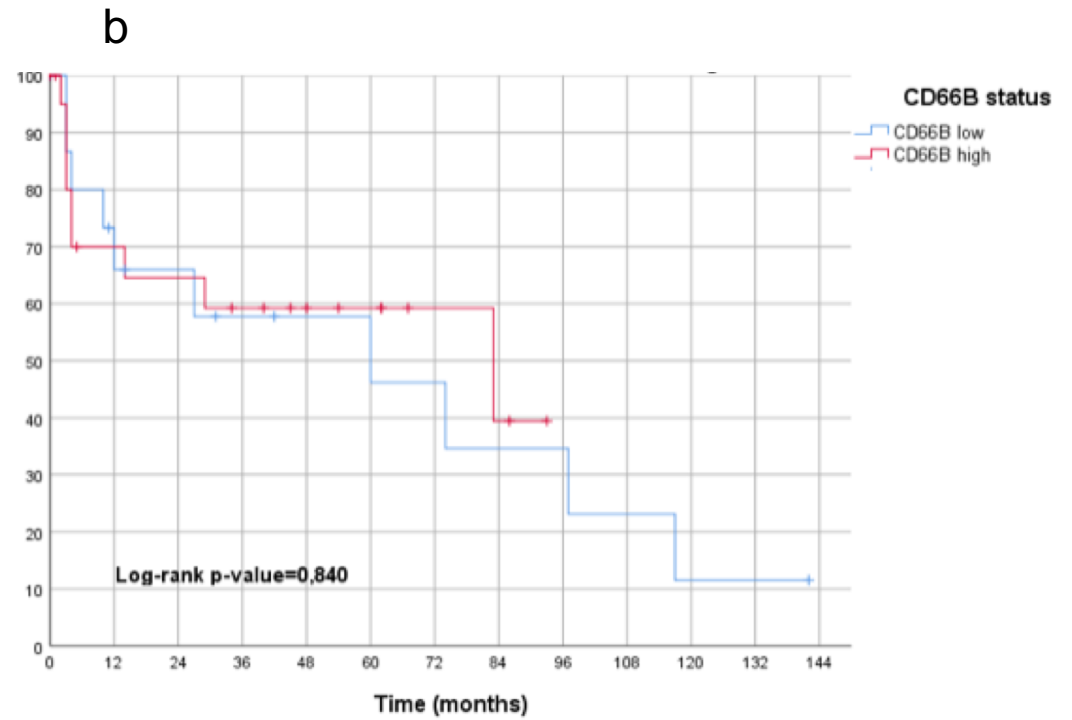
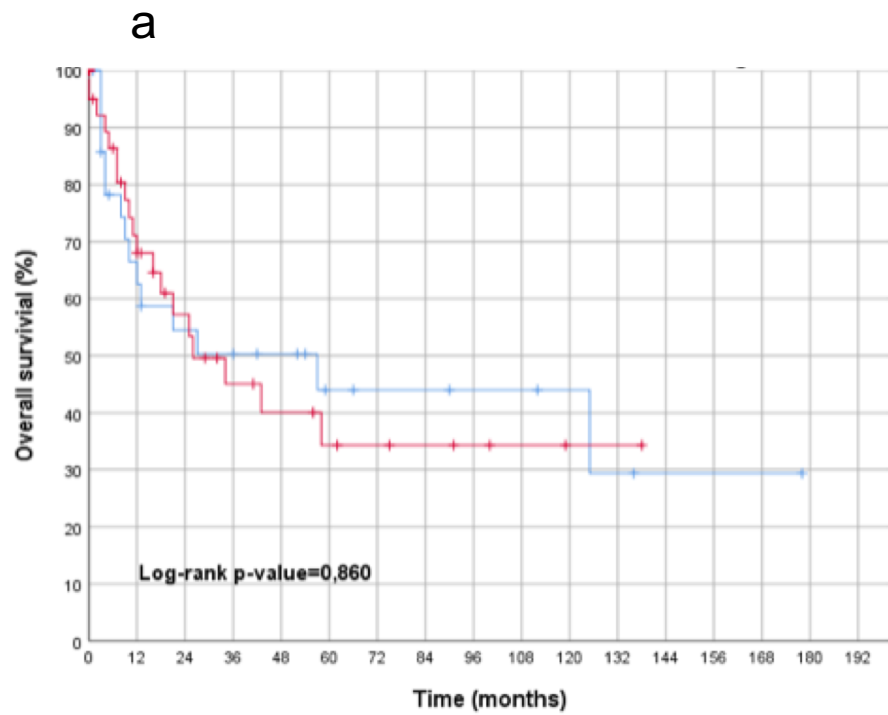
Kerpener Str. 62

50937 Cologne, Germany

E-Mail: hakan.alakus@uk-koeln.de

Phone: +49 0221 478-4803

Fax: +49 0221 478-6258



Online Resource 3 Overall survival analyses in gastric carcinoma of the different molecular subtypes according to sex (blue =low density of TANs; red = high density of TANs)

a) Non-CIN gastric tumors in males

b) Non-CIN gastric tumors in females