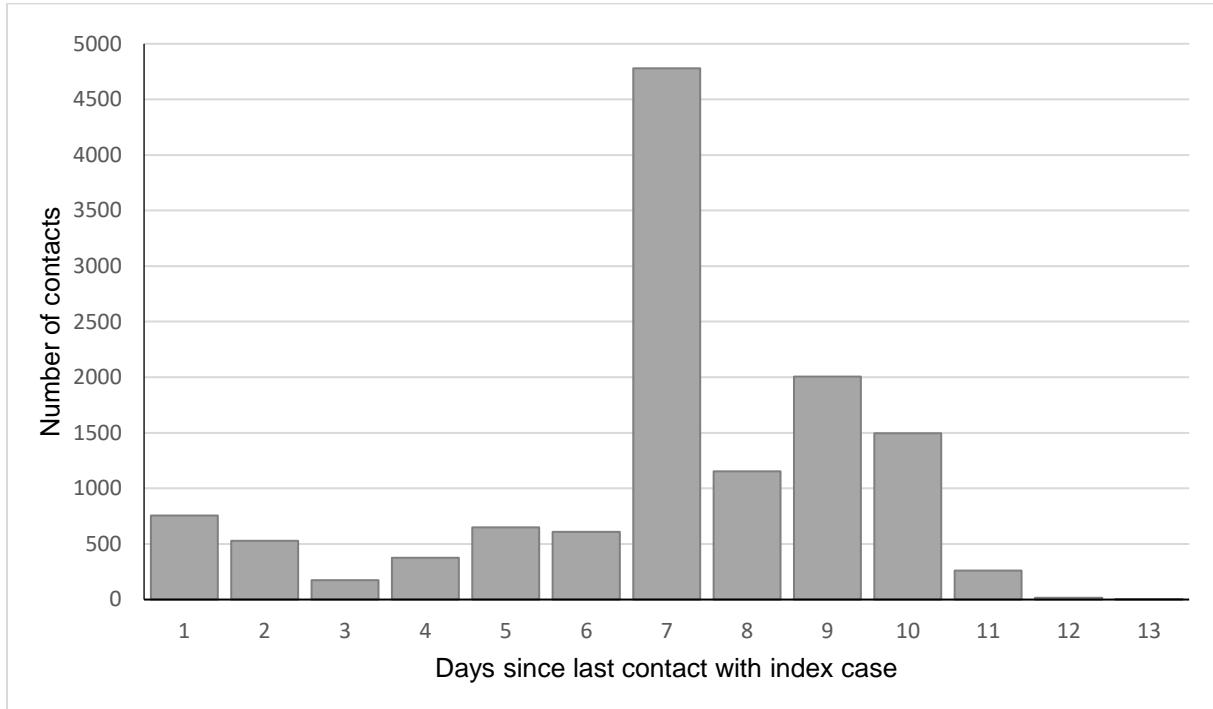


Supplementary Material to Schoeps A, et al. Surveillance of COVID-19 transmission in educational institutions, August to December 2020, Germany

Supplementary Figure 1: Time point of PCR testing in 12,804 contact persons to 426 SARS-CoV-2 index cases in educational institutions, Rhineland-Palatinate, 2020



Supplementary Figure 2: Frequency of cluster sizes (log-scale) around 784 SARS-CoV-2 index cases in educational institutions, Rhineland-Palatinate, 2020

