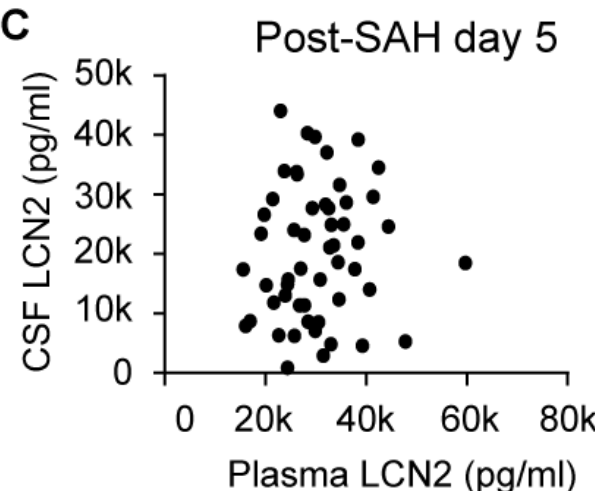
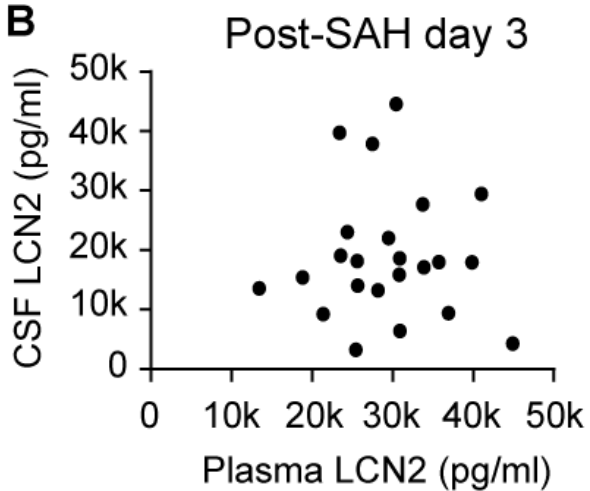
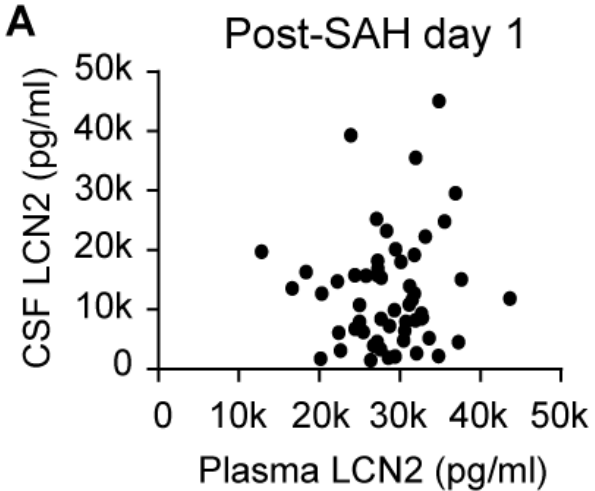
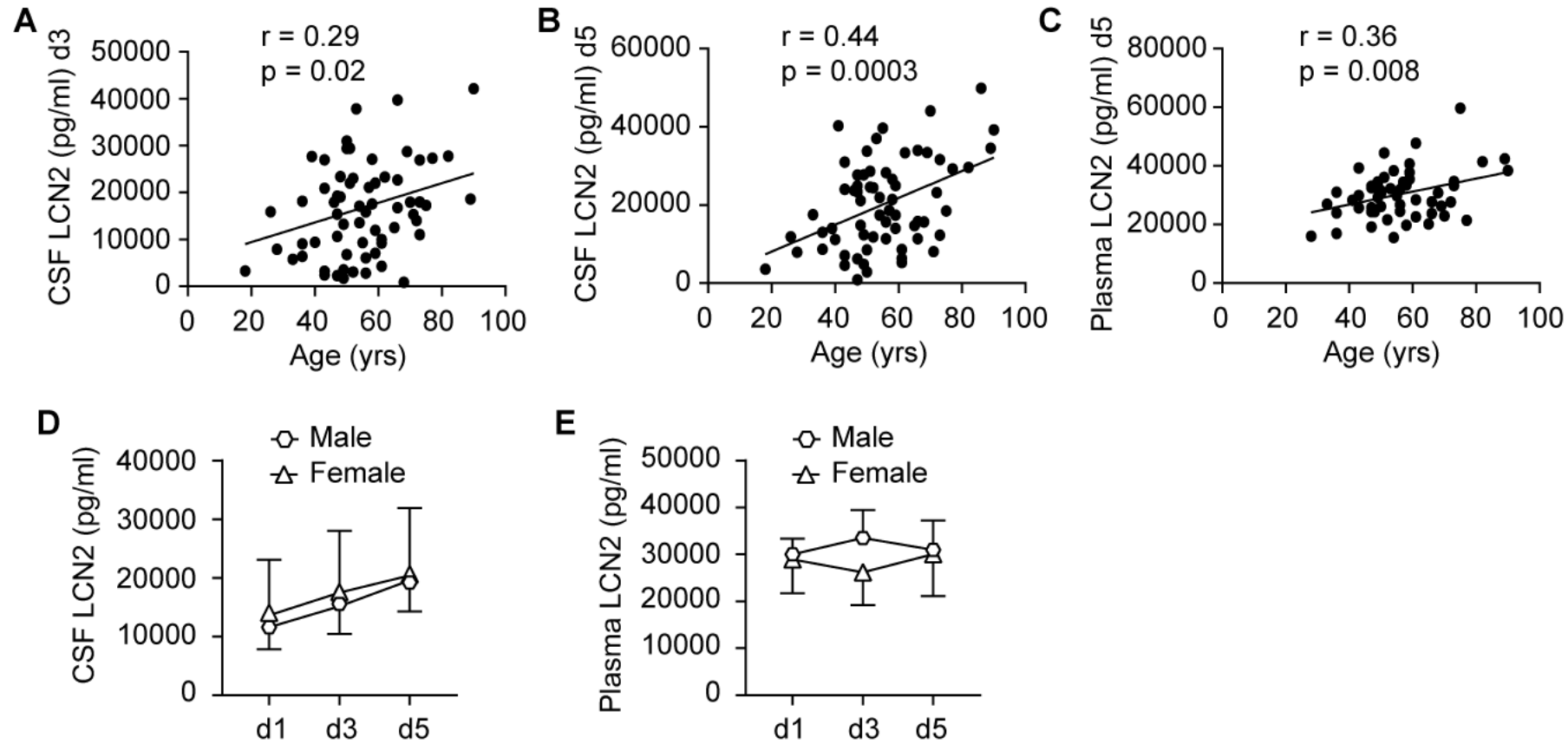


Supplemental Figure 1: Plasma and CSF lipocalin-2 (LCN2) correlations on post-SAH days 1, 3 and 5.



Supplemental Figure 2: Associations between age and CSF lipocalin-2 (LCN2) levels on post SAH day 3 (A) and day 5 (B), and association between age and plasma LCN2 level on post SAH day 5 (C), and effect of sex differences on (D) CSF LCN2 and (E) plasma LCN2 levels. All data in figures C and D are presented as mean \pm standard deviation (SD).



Supplemental Figure 3: Effect of the presence of DSA confirmed aneurysm and vasospasm on (A and C) CSF and (B and D) plasma LCN2 levels, effect of treatment modalities on (E) CSF and (F) plasma LCN2 levels. All data in figures C and D are presented as mean \pm standard deviation (SD).

