

Attenuated Salmonella carrying plasmid co-expressing HPV16 L1 and siRNA-E6 for cervical cancer therapy

Junyu Chen^{1,2}, Shuhua Zhao², Wenxi Tan², Taiwei Wang¹, Shan Wu³, Changshuai Wang¹, Yu Jiang¹, Tuo Zhou¹, Zhuo Zhang¹, Lijing Zhao^{1*}

¹Department of Rehabilitation, School of nursing, Jilin University, Changchun, China

²Department of Gynecology, Second Hospital, Jilin University, Changchun, China

³Key Laboratory of Reproductive Genetics (Ministry of Education) and Department of Reproductive Endocrinology, Women's Hospital, Zhejiang University, School of Medicine, Zhejiang, China

*Correspond to Lijing Zhao,

Email address: zhao_lj@jlu.edu.cn

Postal address: 965 Xinjiang Street, Changchun City, China.

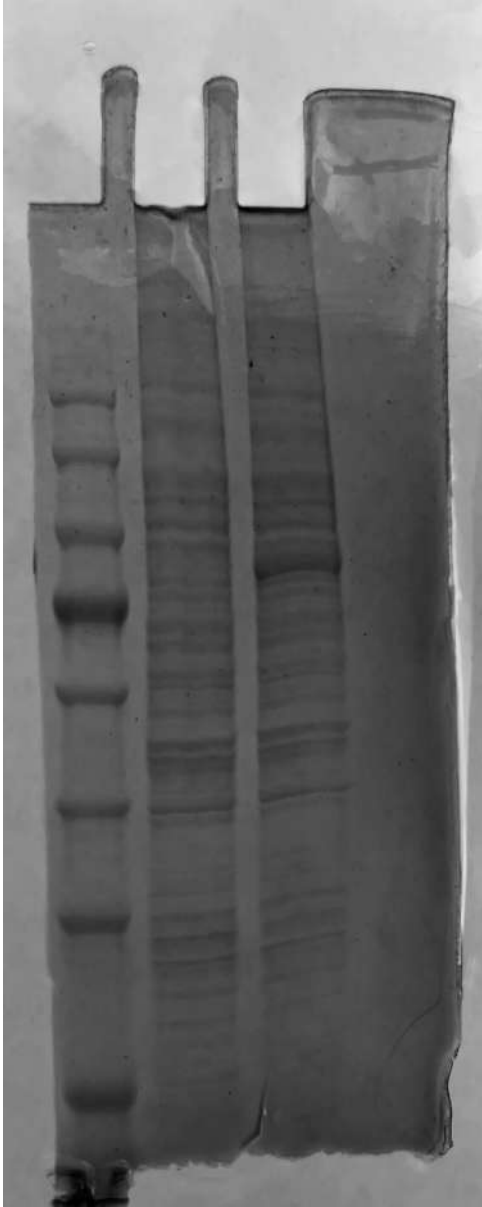
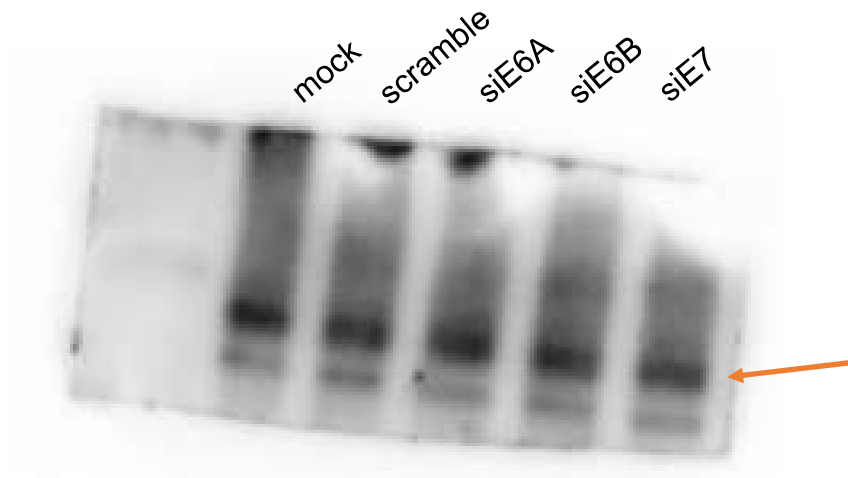
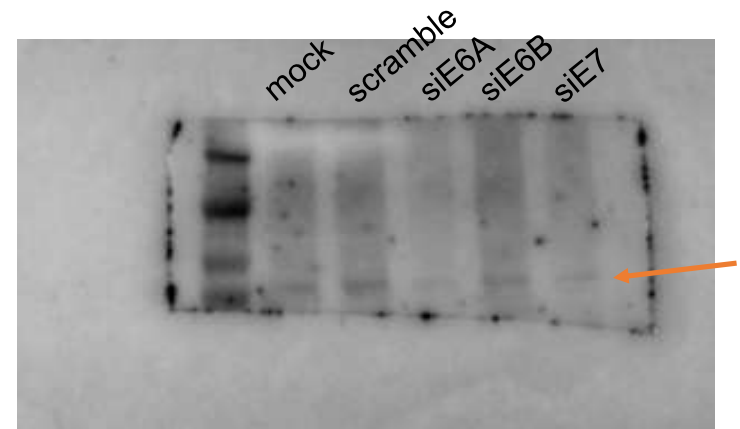


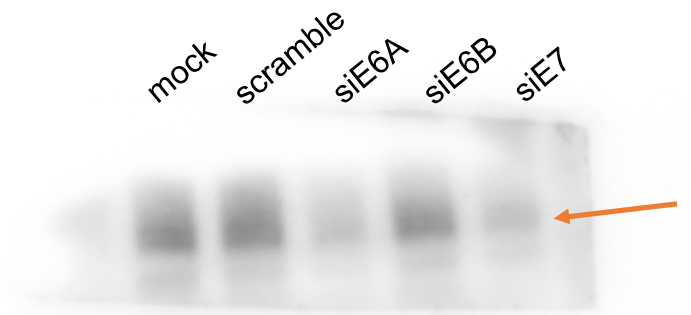
Figure 1C



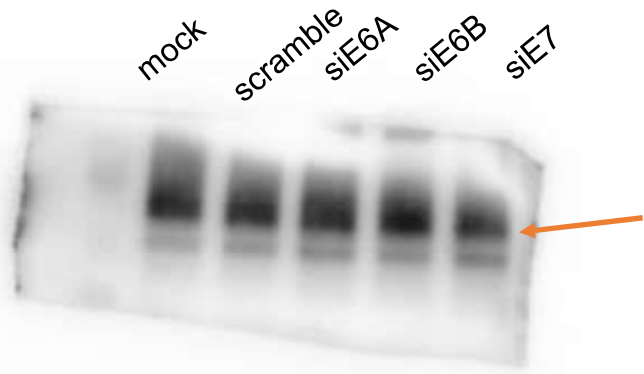
β -actin for the Cells figure 3C



E6 for the Cells figure 3C



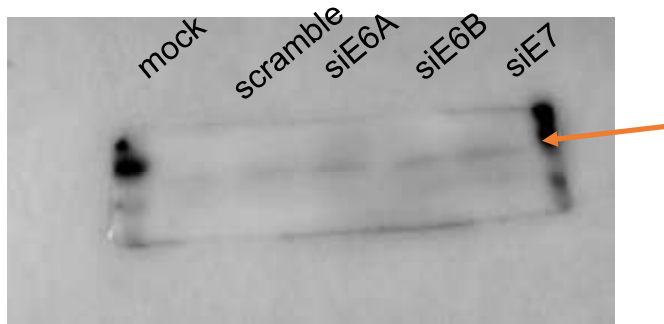
E7 for the Cells figure 3C



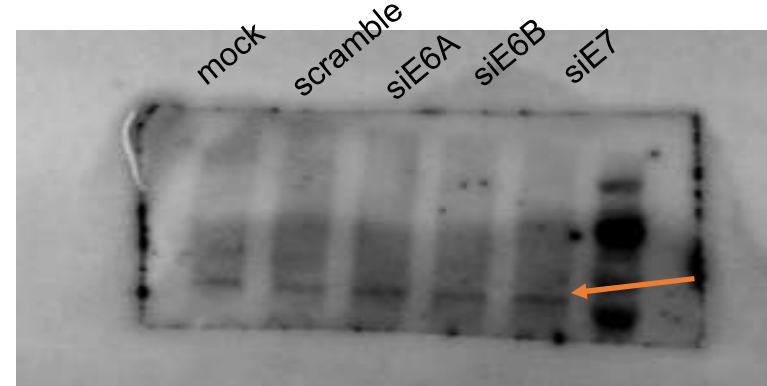
β-actin for the Cells figure 4G



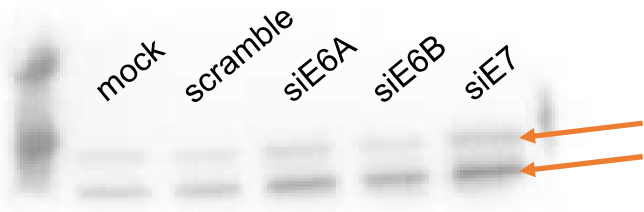
P53 for the Cells figure 4G



Bax for the Cells figure 4G



Caspase9 for the Cells figure 4G



C-Caspase3 for the Cells figure 4G