

BMJ Open

BMJ Open is committed to open peer review. As part of this commitment we make the peer review history of every article we publish publicly available.

When an article is published we post the peer reviewers' comments and the authors' responses online. We also post the versions of the paper that were used during peer review. These are the versions that the peer review comments apply to.

The versions of the paper that follow are the versions that were submitted during the peer review process. They are not the versions of record or the final published versions. They should not be cited or distributed as the published version of this manuscript.

BMJ Open is an open access journal and the full, final, typeset and author-corrected version of record of the manuscript is available on our site with no access controls, subscription charges or pay-per-view fees (<http://bmjopen.bmj.com>).

If you have any questions on BMJ Open's open peer review process please email info.bmjopen@bmj.com

BMJ Open

The next move in movement disorders (NEMO): developing a computer aided classification tool for hyperkinetic movement disorders.

Journal:	<i>BMJ Open</i>
Manuscript ID	bmjopen-2021-055068
Article Type:	Protocol
Date Submitted by the Author:	06-Jul-2021
Complete List of Authors:	van der Stouwe, A.M.M. (Madelein); University Medical Centre Groningen, Neurology; Expertise Centre Movement Disorders Groningen Tuitert, Inge; University Medical Centre Groningen, Neurology; Expertise Centre Movement Disorders Groningen Giotis, Ioannis; ZiuZ Visual Intelligence BV Calon, Joost; ZiuZ Visual Intelligence BV Gannamani, Rahul; University Medical Centre Groningen; Expertise Centre Movement Disorders Groningen Dalenberg, Jelle; University Medical Centre Groningen, Neurology; Expertise Centre Movement Disorders Groningen van der Veen, Sterre; University Medical Centre Groningen, Neurology; Expertise Centre Movement Disorders Groningen Klamer, M.R. (Marrit); University Medical Centre Groningen, Neurology; ZiuZ Visual Intelligence BV Telea, A.C. (Alex); Utrecht University Department of Information and Computing Sciences Koning, M.A.J. (Marina); University Medical Centre Groningen, Neurology; Expertise Centre Movement Disorders Groningen
Keywords:	NEUROLOGY, NEUROPHYSIOLOGY, Adult neurology < NEUROLOGY

SCHOLARONE™
Manuscripts



I, the Submitting Author has the right to grant and does grant on behalf of all authors of the Work (as defined in the below author licence), an exclusive licence and/or a non-exclusive licence for contributions from authors who are: i) UK Crown employees; ii) where BMJ has agreed a CC-BY licence shall apply, and/or iii) in accordance with the terms applicable for US Federal Government officers or employees acting as part of their official duties; on a worldwide, perpetual, irrevocable, royalty-free basis to BMJ Publishing Group Ltd ("BMJ") its licensees and where the relevant Journal is co-owned by BMJ to the co-owners of the Journal, to publish the Work in this journal and any other BMJ products and to exploit all rights, as set out in our [licence](#).

The Submitting Author accepts and understands that any supply made under these terms is made by BMJ to the Submitting Author unless you are acting as an employee on behalf of your employer or a postgraduate student of an affiliated institution which is paying any applicable article publishing charge ("APC") for Open Access articles. Where the Submitting Author wishes to make the Work available on an Open Access basis (and intends to pay the relevant APC), the terms of reuse of such Open Access shall be governed by a Creative Commons licence – details of these licences and which [Creative Commons](#) licence will apply to this Work are set out in our licence referred to above.

Other than as permitted in any relevant BMJ Author's Self Archiving Policies, I confirm this Work has not been accepted for publication elsewhere, is not being considered for publication elsewhere and does not duplicate material already published. I confirm all authors consent to publication of this Work and authorise the granting of this licence.

The next move in movement disorders (NEMO): developing a computer aided classification tool for hyperkinetic movement disorders.

A.M.M. van der Stouwe^{1,2,CA}, I. Tuitert^{1,2}, I. Giotis^{1,3}, J. Calon^{1,3}, R. Gannamani^{1,2}, J.R. Dalenberg^{1,2}, S. van der Veen^{1,2}, M.R. Klamer^{1,2,3}, A.C. Telea⁴, M.A.J. Tijssen^{1,2}

¹Expertise Centre Movement Disorders Groningen, University Medical Center Groningen, Groningen, The Netherlands

²Department of Neurology, University Medical Centre Groningen, Groningen, The Netherlands

³ZiuZ Visual Intelligence BV, Gorredijk, The Netherlands

⁴Department of Computing Sciences, University of Utrecht, Utrecht, The Netherlands

CA - corresponding author: Hanzeplein 1, 9700 RB, Groningen, The Netherlands. Mail: a.m.m.van.der.stouwe@umcg.nl, phone: +31503612401

List of email addresses:

a.m.m.van.der.stouwe@umcg.nl

i.tuitert@umcg.nl

i.giotis@ziuz.com

j.calon@ziuz.com

r.gannamani@umcg.nl

j.r.dalenberg@umcg.nl

s.van.der.veen04@umcg.nl

m.r.klamer@umcg.nl

a.c.telea@uu.nl

m.a.j.de.koning-tijssen@umcg.nl

Word count: 3112

Abstract

Objectives: to develop a novel approach to hyperkinetic movement disorder classification, that combines clinical information, electromyography, accelerometry and video in a computer aided classification tool.

Design: cross-sectional study.

Setting: Expertise Centre Movement Disorders Groningen, University Medical Centre Groningen.

Participants: NEMO study comprises patients with both single and mixed phenotype movement disorders. Single phenotype groups will firstly include dystonia, myoclonus, and tremor, and in the future chorea, tics, ataxia, and spasticity will be added. Mixed phenotypes to be included are myoclonus-dystonia, dystonic tremor, myoclonus ataxia, and jerky/tremulous functional movement disorders. Each group will contain 20 patients. Similarly, 40 healthy participants will participate. The gold standard for inclusion of a participant consists of interobserver agreement on the phenotype amongst three experienced, blinded and independent clinical experts.

Data collection: electromyography, accelerometry and 3D video data will be recorded during performance of a set of movement tasks, chosen by a team of specialists for their suitability to draw out movement disorders.

Analysis: clinical parameters, EMG, motion sensor and 3D video data will serve as input for the machine learning algorithm. Labels for supervised learning are provided by the expert-based phenotype classification, allowing the algorithm to train and finally learn to predict what the output label should be when given new input data. Methods using manually engineered features based on our existing clinical knowledge of hyperkinetic movement disorders will be used, as well as deep learning methods which can automatically detect relevant and possibly new features for classification. Finally, we will employ visual analytics to visualise how the classification algorithm arrives at its decision.

Conclusion: the development of a computer aided classification tool can be seen as the next step towards rapid and accurate phenotype classification of hyperkinetic movement disorders, the cornerstone of both the diagnostic and treatment process.

Article summary

Strengths and limitations of this study

- This cross-sectional study addresses a real need in classification of hyperkinetic movement disorders and may revolutionise our clinical approach.
- Representative patients from the entire hyperkinetic movement disorders spectrum will participate, including myoclonus, dystonia, tremor, chorea and tics, as well as ataxia, spasticity and functional movement disorders.
- An extensive data set will be collected and used for analysis: clinical information and data from EMG, accelerometry and 3D video.
- The project is a collaboration between movement disorders specialists at an acknowledged expertise centre and computer scientists in the corporate and academic world.
- Calculation of the needed sample size is hampered by the absence of previous studies in this exact field.

Funding statement

This work was supported by the European Fund for Regional Development of the European Union in collaboration with the province of Fryslan (grant number 01492947), and a ZonMW TOP Grant (grant number 91218013).

Competing interest statement

Authors IG, JC and MRK are employed by ZiuZ Visual Intelligence BV, a company with an interest in the development of software tools to aid medical care. Presently, there is no commercial stake in this project.

Data sharing statement

Unpublished data are primarily intended for researchers at the University Medical Center Groningen involved in the NEMO study. Access to data from external parties will be evaluated in a central meeting by the NEMO team.

Author contributions

Conception of the study: MAJT, ACT

Design of the experiment: AMMS, IT, IG, JC, RG, SV, MRK, ACT, MAJT

Writing of the article: AMMS, IT

Review and critique: IG, JC, RG, JRD, SV, MRK, ACT, MAJT

Introduction

The hyperkinetic movement disorders myoclonus, dystonia, tremor, chorea and tics are all characterised by excessive, involuntary movements (Table 1).¹ In a patient presenting with such a disorder, it is crucial to classify the movement disorder phenotype promptly and accurately, because the phenotype classification will guide clinical decisions on diagnostic testing and (symptomatic) treatment¹. Current clinical algorithms on hyperkinetic movement disorder diagnosis, whether aimed at dystonia², myoclonus³, or tremor⁴, all start with the same step: make sure to establish the main movement disorder phenotype in the patient. The subsequent diagnostic steps consist of additional tests such as laboratory, imaging, and genetic tests, which can greatly aid the patient's etiological diagnosis. The same holds for treatment: decisions on which medication to prescribe or which target to choose for deep brain stimulation are directed by the main clinical movement disorder phenotype.

Given the importance of clinical phenotype recognition, it is unfortunate that correct classification is difficult in many patients. While each phenotype of movement disorder has its own clinical presentation, complex and mixed forms occur. Moreover, the big five hyperkinetic phenotypes (myoclonus, dystonia, tremor, chorea and tics) may share overlapping clinical features with ataxia, spasticity and functional movement disorders. Presently, the classification of involuntary movements is based on clinical definitions and therefore on expert opinion. However, research demonstrated large inter- and intra-observer variability of clinical classification.⁵⁻⁸ This is a major problem that impairs correct phenotyping of patients which subsequently delays etiological diagnosis, deliverance of tailored treatment, and evaluation of treatment effects.

To improve the classification of hyperkinetic movement disorders we set up the current study, Next Move in Movement Disorders (NEMO). Our aim is to combine electromyography (EMG), motion sensors, and 3D video with machine learning to develop a computer aided classification tool for hyperkinetic movement disorders, which will help health care professionals establish the movement disorders phenotype. The algorithm of this computer aided classification tool will be trained with the input data from patients who have a hyperkinetic movement disorders phenotype on which a panel of blinded independent experts agree.

Currently, EMG and accelerometry are applied in clinical practice to support the clinical classification of movement disorders, particularly myoclonus, tremor, and dystonia. This is done by assessment of features such as muscle activation pattern, burst duration, and frequency. While not all applications are supported by extensive evidence, there is a long tradition and ample

1
2
3 experience with these methods.⁹ Despite the frequently incorporated clinical application of video
4 to discuss cases among panels of experts, the use of video to automatically detect, quantify, and
5 classify involuntary movements is still in its infancy. Some advances have recently been made in
6 using video for assessment of tremor frequency in a research setting¹⁰. While these first steps are
7 encouraging, application in other movement disorders is still lacking. Moreover, until now,
8 investigations of machine learning in movement disorders have mainly focussed on
9 quantification of the hyperkinetic movements¹¹ and optimisation of adaptive deep brain
10 stimulation.¹² Efforts to classify different types of hyperkinetic movement disorders have not yet
11 been made, to our knowledge.

12
13 In the NEMO project, we combine EMG, accelerometry, and video recordings to develop an
14 innovative new approach to movement disorder classification. We see the development of a
15 computer aided classification tool as the next step towards swift and accurate phenotype
16 classification of hyperkinetic movement disorders, the cornerstone of both the diagnostic and
17 treatment process.

28 **Methods**

30 *Study population*

31
32 The NEMO study protocol comprises patients with both single and mixed phenotype movement
33 disorders. Single phenotype groups will primarily include dystonia, myoclonus, and tremor, and
34 in the future chorea, tics, ataxia, and spasticity will be added. Although spasticity is not typically
35 classified as a movement disorder, this group is added for distinction from dystonia, as these two
36 neurological conditions are sometimes confused with one another.⁶ Similarly, ataxia is not usually
37 listed as a hyperkinetic movement disorder, but signs of ataxia can overlap with symptoms of
38 hyperkinetic movement disorders, making it a relevant phenotype to include.¹³ Mixed phenotype
39 groups will consist of myoclonus-dystonia, dystonic tremor, myoclonus ataxia, and
40 jerky/tremulous functional movement disorders. All patient groups will consist of 20
41 participants. In addition, a group of 40 healthy participants will be included. Patients will be
42 carefully selected based on all clinical information (MRK, AMMS, MAJT): after participating in the
43 experiment, their data will be reviewed by a panel of experts to assess their phenotype and
44 whether they meet the gold standard for inclusion.

45
46 Participants will only be eligible for inclusion if they are at least 16 years old. Exclusion criteria
47 consist of comorbid conditions that lead to impaired upper extremity function, and a silver allergy
48 or implanted pacemaker due to incompatibility with the EMG device. Moreover, healthy
49 participants cannot be first degree relatives of patients with hyperkinetic movement disorders.
50
51
52
53
54
55
56
57
58
59
60

Recruitment

Patients will be selected from the University Medical Center Groningen (UMCG) hyperkinetic movement disorders database and recruited at the UMCG outpatient clinic. If patient inclusion using these two sources does not lead to the targeted number of patients, we will recruit at other hospitals and via patient associations. Healthy participants will also be recruited at the UMCG. Participants will receive written information about the study and will have the opportunity to ask the investigators questions beforehand. Prospective participants can also call upon an independent neurologist, who is not involved in the NEMO study, if they have any remaining questions. All participants will give written informed consent before enrolment.

Study setting

Movement Disorders Groningen, based at the UMCG, is uniquely positioned for the conduction of the NEMO study, as we treat patients with a broad range of hyperkinetic movement disorders. Movement Disorders Groningen is acknowledged by the Dutch Federation of University Medical Centres (NFU) as an official centre of expertise, and it is part of the European Reference Network for rare diseases. Data analysis will be performed in collaboration with ZiuZ Visual Intelligence BV (IG, JC), and the departments of computing science at the University of Utrecht (ACT) and the University of Groningen.

Experimental setup

Clinical information

Clinical information such as age at onset, family history, disease progression, medication use, symptom influencing factors, and psychological complaints will be acquired from the participants during their study visit. Moreover, the influence of their movement disorder on activities of daily life will be assessed using the Fahn-Tolosa-Marin Essential Tremor Rating Scale part C¹⁴, with additional questions that originate from the Burke-Fahn-Marsden Dystonia Rating Scale¹⁵, SARA Ataxia Scale¹⁶, Unified Myoclonus Rating Scale¹⁷, Shapiro Tourette's Syndrome Severity Scale¹⁸, and Abnormal Involuntary Movement Scale¹⁹. Additionally, patients will be asked to indicate the perceived severity of their movement disorder on a visual analogue scale.

Movement tasks

Data will be collected while participants are performing several movement tasks. These tasks are selected from the Fahn-Tolosa-Marin Essential Tremor Rating Scale¹⁴, Burke-Fahn Marsden Dystonia Rating Scale¹⁵, SARA Ataxia Scale¹⁶, Unified Myoclonus Rating Scale¹⁷, Shapiro Tourette's Syndrome Severity Scale¹⁸, and Abnormal Involuntary Movement Scale¹⁹. All of these are validated scales, used both in clinical practise and in experimental settings to assess the severity

1
2
3 of specific movement disorders. As such, they contain tasks that are designed to elicit the
4 movement disorder in a patient, enabling assessment of severity. Selection of tasks was discussed
5 in depth with seven movement disorders, neuropediatric, and neurorehabilitation specialists
6 with particular experience in the field of dystonia, myoclonus, tremor, chorea, tics, ataxia or
7 spasticity to ensure comprehensive coverage of all disorders. Table 2 lists the set of tasks to be
8 included. A trained investigator will instruct the participant before the recording of each task. If
9 the task is not performed as instructed or the data collection was suboptimal, the patient is asked
10 to repeat the task. Version control of tasks is used to ensure that the correct version of the task is
11 included in the data analysis.
12
13
14
15
16
17

18 19 *Data collection*

20 Data from electromyography, motion sensors, and 3D video will be collected simultaneously
21 using custom made software (Visual Studio, Microsoft, USA). Surface EMG and motion sensor data
22 will be recorded using the Trigno system (Delsys, Massachusetts, USA). Data collection
23 frequencies of the EMG and the motion sensors are 2000 Hz and 150 Hz respectively. The Trigno
24 Avanti sensors measure muscle activity, 3D accelerometry, 3D gyroscope, and 3D magnetometry
25 in each single wireless device. Ten Trigno Avanti sensors will be placed bilaterally on the
26 participant's arms and neck, aiming for the m. biceps, m. triceps, m. extensor carpi radialis, m.
27 flexor carpi ulnaris, and on both index fingers for accelerometry purposes only. Additionally, the
28 Trigno Mini sensors measure muscle activity, using the sensor head, and 3D accelerometry, using
29 the sensor base, in each single wireless device. The six Trigno Mini sensor heads, registering EMG
30 data, will be placed bilaterally aiming for the m. abductor pollicis, m. abductor digiti quinti, and
31 m. sternocleidomastoideus. The six Trigno Mini sensor bases, registering accelerometry, will be
32 placed bilaterally at the inside of the forearm near the wrist, the back of the hand, and the jaw.
33 Figure 1 illustrates the placement of the EMG and motion sensors.
34
35
36
37
38
39
40
41
42

43 3D video data will be recorded using two types of 3D video cameras. A Realsense D435 camera
44 (frame rate 30 fps; Intel, California, USA) will be used for whole body tracking; two Leap Motion
45 cameras (frame rate 120 fps; Leap Motion, California, USA) will be employed to track the hands
46 specifically. For the Realsense D435 camera, the NuiTrack API (3DiVi, California, USA) is used to
47 extract joints from the depth frames. Aside from the depth frames, the Realsense D435 camera
48 also collects 2D colour frames at 30 fps. The Leap Motion camera uses an internal algorithm to
49 extract joints from the depth frames. Figure 2 depicts which body parts are tracked by the
50 cameras.
51
52
53
54
55

56 The electromyography, motion sensors, and 3D video data all have different sampling frequencies
57 or frame rates. To enable synchronization of modalities, a time stamp of each data sample point
58 is saved during data acquisition.
59
60

Sample size

For the current study, artificial intelligence experts expect that 20 subjects per patient group will be sufficient to develop proof-of-principle for a computer aided diagnosis tool, because of the extensive amount of data that is collected per participant. Calculation of the needed sample size is hampered by the absence of previous studies in this exact field. While machine learning with, for example, MRI²⁰ and EEG²¹ data has previously been used to classify other diseases, both these data and disorders differ from the proposed study and are therefore not suitable to perform power analyses.

Data management

Study data will be handled confidentially and in accordance with the European personal data protection regulation (General Data Protection Regulation). A unique identification code will be assigned to each participant. All raw de-identified EMG, motion sensor, and 3D video data will be stored at the research drive hosted and provided by the UMCG. Pre-processed data will be stored and analysed in the virtual research workspace, a secure virtualised desktop environment provided and hosted by the University of Groningen. De-identified clinical data is collected and managed using REDCap electronic data capture tools hosted at the UMCG.^{22,23}

Data analysis

Gold standard

The “gold standard” for phenotype classification is defined as inter-observer agreement amongst three experienced (inter)national clinical experts who will each assess the phenotype of a patient independently. Their evaluation will be based on the video recordings (RGB, 2D) of the participants performing all the different tasks described in Table 2 during the experiment. Moreover, a sound fragment is recorded of the patient’s speech for the experts’ assessment. They will also be presented with information from the history and ancillary tests, to mimic the typical outpatient clinic situation as best as we can. The experts will be blind to the phenotype classification made by the investigators. All video data for the experts can be reviewed using the virtual research workspace and the relevant clinical information can be assessed in REDCap. Inter-observer agreement among the clinical experts will be calculated using Fleiss’ kappa (K).²⁴ We consider a Fleiss’ K value above 0.80 (interpreted as excellent agreement) across all groups as sufficient. Moreover, for each individual participant, a minimum of two out of three experts should be in agreement. If a participant does not meet this requirement, their data will be excluded from further analysis.

Machine learning analyses

To develop the computer aided classification tool, several machine learning techniques will be used. The clinical parameters, EMG, motion sensors, and 3D video data will serve as input for the machine learning algorithm. The expert-based phenotype classification will serve as patient labels for supervised learning. In supervised machine learning, an algorithm is trained with multiple examples with a known output label (the expert-based phenotype classification), learning how to process the input data (clinical, EMG, motion sensor, and video data) to reproduce the output label. The fully trained algorithm can then be given new input data, and is able to predict what the output label should be, making these types of algorithms well suited for classification.²⁵ Examples of machine learning techniques that will be investigated include deep learning methods such as long short-term memory networks²⁶ and methods based on manually engineered features such as random forest classifiers^{27,28} and learning vector quantization^{29,30} using features from clinical neurophysiology research and practice (e.g. frequency analysis or intermuscular coherence). From the above classes, deep learning methods have the advantage of computational scalability and the ability to automatically extract the relevant features for classification. In contrast, methods using manually engineered features allow one to control which aspects of the data are used by the classifier to reach its decisions and thus can be trained with fewer data to arrive at high accuracies. The information about how machine learning algorithms arrive at their output labels is often limited, which can mask confounding factors or simply diminish trust in the produced outputs. To address this problem, we will employ visual analytics to visualise how the classification algorithm arrives at its decision, and in particular which data aspects it uses to reach that decision.

Dissemination

This study is designed to pioneer the application of machine learning in the classification of movement disorders, and allows for comprehensive data collection of clinical information, EMG and motion sensor data, and 3D video. Because of its scope, we expect to publish multiple articles in the fields of clinical neurology, particularly movement disorders, clinical neurophysiology, artificial intelligence, and visual analytics. Moreover, patients will be informed of important study results via the different patient associations, press releases, the website www.movementdisordersgroningen.com, and at the Movement Disorders Groningen biannual Patient Day.

Patient and public involvement

Members of the Movement Disorders Groningen Patient Council are updated regularly about the progress of the NEMO study and advise on online patient information. The help of several patient

1
2
3 associations is enlisted for the recruitment of participants. Dissemination to patients and the
4 general public is described above.
5
6
7

8 *Ethics*

9 The NEMO study protocol has been approved by the Medical Ethical Committee (METc 2018-444)
10 of the UMCG and will be conducted according to the ethical standards of the Helsinki Declaration.
11
12
13

14 *Funding*

15 This study is partly subsidised by the European Fund for Regional Development of the European
16 Union (grant number 01492947), the province of Fryslan, and a ZonMW TOP Grant (grant
17 number 91218013).
18
19
20
21
22

23 **Discussion**

24 The NEMO study seeks to develop a computer aided classification tool for hyperkinetic movement
25 disorders. Such a tool would aid doctors in establishing the movement disorders phenotype. As
26 adequate phenotype classification is the foundation of clinical decision making and treatment of
27 hyperkinetic movement disorders, improving this process would ultimately result in swifter and
28 more accurate diagnoses and treatment for patients. To this end, we will investigate patients with
29 myoclonus, dystonia, tremor, chorea, tics, and functional jerky/tremulous movement disorders,
30 as well as the related disorders ataxia and spasticity.
31
32
33
34
35
36

37 Our study has several strengths and some possible limitations. A major strength of this study is
38 that it is conducted at a leading centre of expertise for movement disorders, Movement Disorders
39 Groningen at the UMCG, the Netherlands. Experts in the field of all hyperkinetic movement
40 disorders are present for collaboration and patient recruitment. For example, several experts
41 assisted in selection of the appropriate tasks that patients will perform during the experiment,
42 ensuring proper investigation of all relevant movement disorders. Also, the centre has a large
43 patient database, which is a substantial advantage as some movement disorders are rare.
44 Moreover, we have good rapport with our centre's patient council, who can advise on recruitment
45 and dissemination of results. Disease rarity might still limit our speed of inclusion, a potential
46 limitation, but given the advantages linked to our centre of expertise as well as the collaborations
47 that exist with other centres, we are confident we will include enough patients in each group.
48
49
50
51
52
53
54
55

56 A second significant strength is the collection and analysis of extensive data: both clinical
57 information and data from EMG, motion sensors, and 3D video. In the analysis of these data, we
58 can make use of the expertise of several members in our team. For instance, we have ample
59
60

1
2
3 experience with the analysis of EMG and motion sensor data in movement disorders patients at
4 the department of clinical neurophysiology.³¹⁻³⁴ Similarly, ZiuZ Visual Intelligence BV, a major
5 collaborator in this project, has a proven track record of developing and deploying systems that
6 collect and analyse visual data in different sectors and thus the required expertise for designing
7 and implementing the computer-aided diagnosis tool as well as the data acquisition software for
8 NEMO. In addition, academic input on the topic of machine learning and visual analytics is
9 available from the University of Utrecht³⁵⁻³⁸ and the University of Groningen.³⁹⁻⁴²
10
11
12
13
14
15

16 *Significance*

17 The aim of this study is to move the classification of movement disorder phenotypes forward, to
18 improve the diagnostic process and optimise treatment in hyperkinetic movement disorders
19 patients. This could be achieved by the development of an all-encompassing computer aided
20 diagnostic tool for all hyperkinetic movement disorder phenotypes, which is the ultimate goal.
21 Such a tool would be a game changer, helping neurologists to establish the phenotype in their
22 patients with more certainty, so they can swiftly move on to other investigations into etiology and
23 to start the correct treatment.
24
25
26
27
28

29 In the process, it is likely that several new diagnostic biomarkers for hyperkinetic movement
30 disorders will be discovered. These biomarkers can have their bearing on the current clinical
31 practice quite quickly, particularly if they are in the fields of electromyography or accelerometry
32 because these techniques are already widely applied in movement disorders diagnostics.
33
34

35 Additionally, the tool that is being developed in the current study could be used to monitor
36 disease severity and progression. This is of relevance for the monitoring of patients during
37 treatment, for instance before and after deep brain stimulation. Another application could be
38 patient assessment in clinical trials.
39
40
41
42

43 *Study status*

44 Data collection is in progress.
45
46
47
48
49

50 **Tables & figures**

51
52
53 Table 1: description of hyperkinetic movement disorders & related disorders.

54 Table 2: description of the included tasks.

55 Figure 1: depiction of sensor placement.

56
57
58 Figure 2: depiction of the study set-up & data collection.
59
60

References

1. Abdo WF, van de Warrenburg BPC, Burn DJ, Quinn NP, Bloem BR. The clinical approach to movement disorders. *Nat Rev Neurol*. 2010;6(1):29-37. doi:10.1038/nrneurol.2009.196
2. Van Egmond ME, Kuiper A, Eggink H, et al. Dystonia in children and adolescents: A systematic review and a new diagnostic algorithm. *J Neurol Neurosurg Psychiatry*. 2015;86(7):774-781. doi:10.1136/jnnp-2014-309106
3. Zutt R, Van Egmond ME, Elting JW, et al. A novel diagnostic approach to patients with myoclonus. *Nat Rev Neurol*. 2015;11(12):687-697. doi:10.1038/nrneurol.2015.198
4. Wardt J Van De, Van Der Stouwe AMM, Dirks M, et al. Systematic clinical approach for diagnosing upper limb tremor. *J Neurol Neurosurg Psychiatry*. 2020;91(8):822-830. doi:10.1136/jnnp-2019-322676
5. Defazio G, Abbruzzese G, Livrea P, Berardelli A. Epidemiology of primary dystonia. *Lancet Neurol*. 2004;3(11):673-678. doi:10.1016/S1474-4422(04)00907-X
6. Eggink H, Kremer D, Brouwer OF, et al. Spasticity, dyskinesia and ataxia in cerebral palsy: Are we sure we can differentiate them? *Eur J Paediatr Neurol*. 2017;21(5):703-706. doi:10.1016/j.ejpn.2017.04.1333
7. Beghi E, Regio V, Papantonio A, et al. Reliability of clinical diagnosis of dystonia. *Neuroepidemiology*. 2014;43(3-4):213-219. doi:10.1159/000367628
8. van der Salm SMA, de Haan RJ, Cath DC, van Rootselaar A-F, Tijssen MAJ. The eye of the beholder: inter-rater agreement among experts on psychogenic jerky movement disorders. *J Neurol Neurosurg Psychiatry*. 2013;84(7):742-747. doi:10.1136/jnnp-2012-304113
9. van der Veen S, Klamer MR, Elting JWJ, Koelman JHTM, van der Stouwe AMM, Tijssen MAJ. The diagnostic value of clinical neurophysiology in hyperkinetic movement disorders: a systematic review. *Parkinsonism Relat Disord*. 2021;Accepted.
10. Williams S, Fang H, Relton SD, Wong DC, Alam T, Alty JE. Accuracy of Smartphone Video for Contactless Measurement of Hand Tremor Frequency. *Mov Disord Clin Pract*. 2021;8(1):69-75. doi:10.1002/mdc3.13119
11. Zhan A, Mohan S, Tarolli C, et al. Using smartphones and machine learning to quantify Parkinson disease severity the mobile Parkinson disease score. *JAMA Neurol*. 2018;75(7):876-880. doi:10.1001/jamaneurol.2018.0809
12. Habets JGV, Heijmans M, Kuijf ML, Janssen MLF, Temel Y, Kubben PL. An update on adaptive deep brain stimulation in Parkinson's disease. *Mov Disord*. 2018;33(12):1834-1843. doi:10.1002/mds.115

- 1
2
3 13. Brandsma R, Verschuuren-Bemelmans CC, Amrom D, et al. A clinical diagnostic algorithm
4 for early onset cerebellar ataxia. *Eur J Paediatr Neurol*. 2019;23(5):692-706.
5 doi:10.1016/j.ejpn.2019.08.004
6
- 7
8 14. Fahn S, Tolosa E, Marin C. Clinical Rating Scale for Tremor. 1988;2:271-280.
9
- 10 15. Burke RE, Fahn S, Marsden CD, Bressman SB, Moskowitz C, Friedman J. Validity and
11 reliability of a rating scale for the primary torsion dystonias. *Neurology*. 1985;35(1):73-
12 77. doi:10.1212/wnl.35.1.73
13
- 14 16. Schmitz-Hübsch T, Du Montcel ST, Baliko L, et al. Scale for the assessment and rating of
15 ataxia: Development of a new clinical scale. *Neurology*. 2006;66(11):1717-1720.
16 doi:10.1212/01.wnl.0000219042.60538.92
17
- 18 17. Frucht SJ, Leurgans SE, Hallett M, Fahn S. The Unified Myoclonus Rating Scale. *Adv Neurol*.
19 2002;89:361-376.
20
- 21 18. Shapiro A, Shapiro E, Young J, Feinberg T. *Gilles de La Tourette Syndrome*.; 1988.
22
- 23 19. Guy W. *ECDEU Assessment Manual for Psychopharmacology (1976 Edition) | Open Library*.;
24 1976.
25
- 26 20. Boudraa AO, Dehak SMR, Zhu YM, Pachai C, Bao YG, Grimaud J. Automated segmentation
27 of multiple sclerosis lesions in multispectral MR imaging using fuzzy clustering. *Comput*
28 *Biol Med*. 2000;30(1):23-40. doi:10.1016/S0010-4825(99)00019-0
29
- 30 21. Aslan K, Bozdemir H, Şahin C, Oğulata SN, Erol R. A radial basis function neural network
31 model for classification of epilepsy using EEG signals. *J Med Syst*. 2008;32(5):403-408.
32 doi:10.1007/s10916-008-9145-9
33
- 34 22. Harris PA, Taylor R, Thielke R, Payne J, Gonzalez N, Conde JG. Research electronic data
35 capture (REDCap)-A metadata-driven methodology and workflow process for providing
36 translational research informatics support. *J Biomed Inform*. 2009;42(2):377-381.
37 doi:10.1016/j.jbi.2008.08.010
38
- 39 23. Harris PA, Taylor R, Minor BL, et al. The REDCap consortium: Building an international
40 community of software platform partners. *J Biomed Inform*. 2019;95:103208.
41 doi:10.1016/j.jbi.2019.103208
42
- 43 24. Fleiss JL. Measuring nominal scale agreement among many raters. *Psychol Bull*.
44 1971;76(5):378-382. doi:10.1037/h0031619
45
- 46 25. Auger SD, Jacobs BM, Dobson R, Marshall CR, Noyce AJ. Big data, machine learning and
47 artificial intelligence: A neurologist's guide. *Pract Neurol*. 2020;21(1):4-11.
48 doi:10.1136/practneurol-2020-002688
49
- 50 26. Hochreiter S, Schmidhuber J. Long Short-Term Memory. *Neural Comput*. 1997;9(8):1735-
51 1780. doi:10.1162/neco.1997.9.8.1735
52
- 53 27. Breiman L. Random forests. *Mach Learn*. 2001;45(1):5-32.
54
55
56
57
58
59
60

- 1
2
3 doi:10.1023/A:1010933404324
4
5 28. Kulkarni VY. *Random Forest Classifiers :A Survey and Future Research Directions*. Vol 36.
6
7 29. Schneider P, Biehl M, Hammer B. Adaptive relevance matrices in learning vector
8 quantization. *Neural Comput*. 2009;21(12):3532-3561. doi:10.1162/neco.2009.11-08-
9 908
10
11 30. Biehl M. Biomedical applications of prototype based classifiers and relevance learning. In:
12 *Lecture Notes in Computer Science (Including Subseries Lecture Notes in Artificial*
13 *Intelligence and Lecture Notes in Bioinformatics)*. Vol 10252 LNCS. Springer Verlag;
14 2017:3-23. doi:10.1007/978-3-319-58163-7_1
15
16 31. Zutt R, Elting JW, Van Zijl JC, et al. Article open access Electrophysiologic testing AIDS
17 diagnosis and subtyping of myoclonus. *Neurology*. 2018;90(8):E647-E657.
18 doi:10.1212/WNL.0000000000004996
19
20 32. van der Stouwe AMM, Elting JW, van der Hoeven JH, et al. How typical are “typical”
21 tremor characteristics? Sensitivity and specificity of five tremor phenomena.
22 *Parkinsonism Relat Disord*. 2016;30:23-28. doi:10.1016/j.parkreldis.2016.06.008
23
24 33. van der Stouwe AMM, Conway BA, Elting JW, Tijssen MAJ, Maurits NM. Usefulness of
25 intermuscular coherence and cumulant analysis in the diagnosis of postural tremor. *Clin*
26 *Neurophysiol*. 2015;126(8). doi:10.1016/j.clinph.2014.10.157
27
28 34. Kramer G, Van der Stouwe AMM, Maurits NM, Tijssen MAJ, Elting JWJ. Wavelet coherence
29 analysis: A new approach to distinguish organic and functional tremor types. *Clin*
30 *Neurophysiol*. 2018;129(1). doi:10.1016/j.clinph.2017.10.002
31
32 35. Schneider P, Biehl M, Hammer B. Distance learning in discriminative vector quantization.
33 *Neural Comput*. 2009;21(10):2942-2969. doi:10.1162/neco.2009.10-08-892
34
35 36. Bunte K, Schneider P, Hammer B, Schleif FM, Villmann T, Biehl M. Limited Rank Matrix
36 Learning, discriminative dimension reduction and visualization. *Neural Networks*.
37 2012;26:159-173. doi:10.1016/j.neunet.2011.10.001
38
39 37. Schneider P, Bunte K, Stiekema H, Hammer B, Villmann T, Biehl M. Regularization in
40 matrix relevance learning. *IEEE Trans Neural Networks*. 2010;21(5):831-840.
41 doi:10.1109/TNN.2010.2042729
42
43 38. Bunte K, Biehl M, Hammer B. A general framework for dimensionality-reducing data
44 visualization mapping. *Neural Comput*. 2012;24(3):771-804. doi:10.1162/NECO_a_00250
45
46 39. Rauber PE, Fadel SG, Falcao AX, Telea AC. Visualizing the Hidden Activity of Artificial
47 Neural Networks. *IEEE Trans Vis Comput Graph*. 2017;23(1):101-110.
48 doi:10.1109/TVCG.2016.2598838
49
50 40. Rauber PE, Falcão AX, Telea AC. *Visualizing Time-Dependent Data Using Dynamic t-SNE*
51 (*EuroVis*); 2016. doi:10.2312/eurovisshort.20161164
52
53
54
55
56
57
58
59
60

- 1
 - 2
 - 3
 - 4
 - 5
 - 6
 - 7
 - 8
 - 9
 - 10
 - 11
 - 12
 - 13
 - 14
 - 15
 - 16
 - 17
 - 18
 - 19
 - 20
 - 21
 - 22
 - 23
 - 24
 - 25
 - 26
 - 27
 - 28
 - 29
 - 30
 - 31
 - 32
 - 33
 - 34
 - 35
 - 36
 - 37
 - 38
 - 39
 - 40
 - 41
 - 42
 - 43
 - 44
 - 45
 - 46
 - 47
 - 48
 - 49
 - 50
 - 51
 - 52
 - 53
 - 54
 - 55
 - 56
 - 57
 - 58
 - 59
 - 60
41. Vernier EF, Comba JLD, Telea AC. *Guided Stable Dynamic Projections*. Vol 40.; 2021.
42. Espadoto M, Martins RM, Kerren A, Hirata NST, Telea AC. Toward a Quantitative Survey of Dimension Reduction Techniques. *IEEE Trans Vis Comput Graph*. 2021;27(3):2153-2173. doi:10.1109/TVCG.2019.2944182

For peer review only

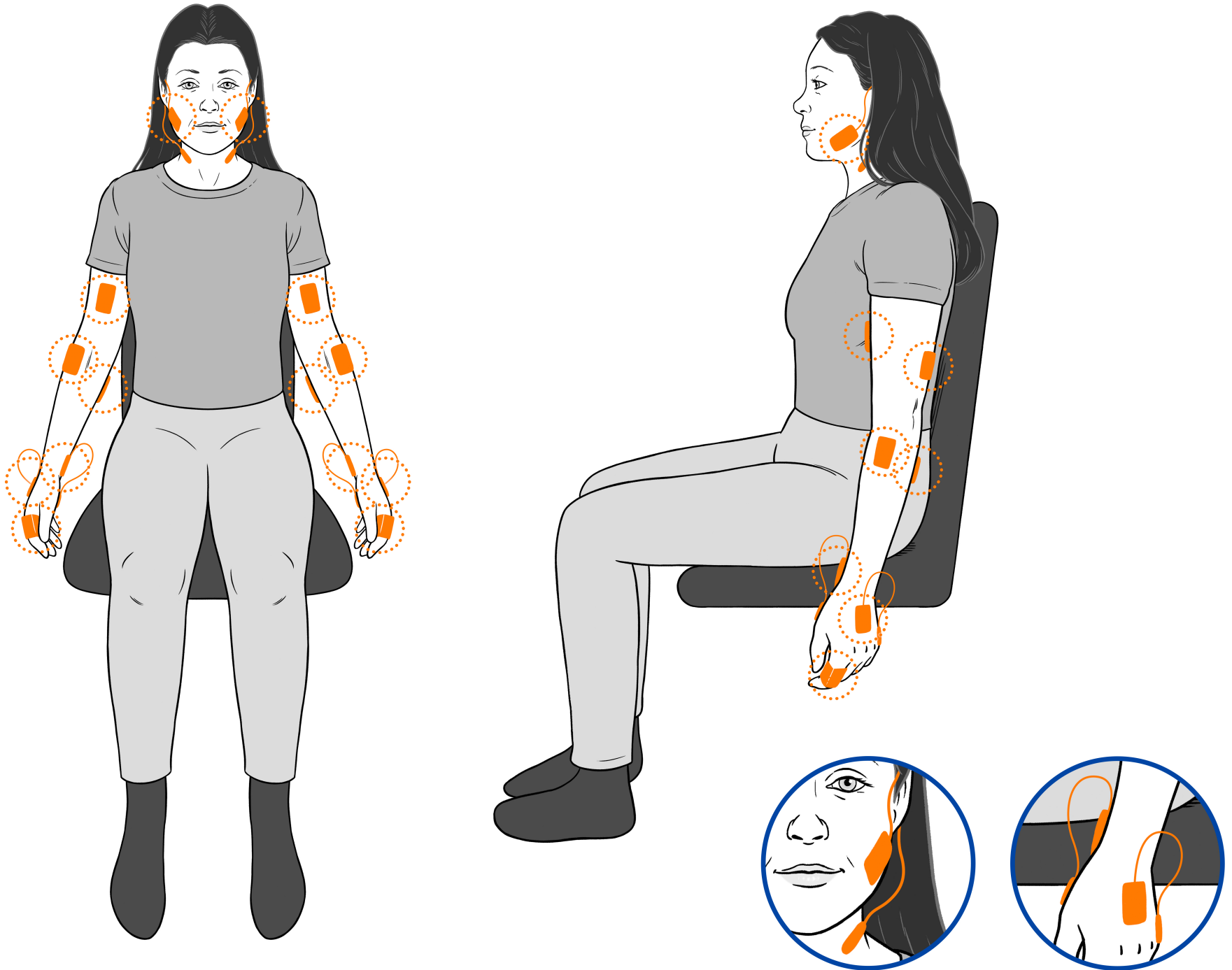
Table 1. Hyperkinetic movement disorders and related disorders.

Disorder	Clinical characteristics
Dystonia	Persistent or intermittent muscle contractions that lead to abnormal movements and/or postures.
Myoclonus	Sudden, brief, shock-like movements.
Tremor	Rhythmic, oscillatory movement of a body part.
Chorea	Continuous, abrupt, unpredictable non-rhythmic jerky movements.
Tics	Stereotyped, repeating, shock-like movements, which can be temporarily repressed. Patients feel an urge preceding the movements.
Ataxia	Inability to perform smooth, coordinated, targeted movements.
Spasticity	Variable combination of paresis, elevated reflexes and increased muscle tone.

Table 2. Included tasks.

Type of task	Task description	Duration/repetitions
Rest	Arms at rest, in a relaxed position on the participant's lap and supinated hands	20-30 seconds
Postural tasks	Supinated outstretched arms and hands	20-30 seconds
	Pronated outstretched arms and relaxed wrists	20-30 seconds
	Pronated outstretched arms and hands	20-30 seconds
	Pronated outstretched arms and extended wrists	20-30 seconds
	Hands in front of chest: shoulders abducted at 90 degrees, fingers pointing towards each other	20-30 seconds
	Index finger in front of nose*	20-30 seconds
Dexterity	Spiral drawing*	1 Archimedes spiral
	Writing*	1 sentence
	Nine-hole pegboard test*	1 test
	Diadochokinesis	20-30 seconds
Finger tapping	Finger tapping task: metronome cue* (3 and 5 Hz)	20 seconds
	Finger tapping task: self-paced*	20-30 seconds
	Four-finger tapping task*	20-30 seconds
Pointing tasks	Simple finger-to-nose manoeuvre*	5 repetitions
	Point-to-nose test*	12 repetitions
	Point-to-point test*	12 repetitions
Mental distraction	Pronated outstretched arms and hands + "serial sevens" (100 - 7 - 7 etc.)	20-30 seconds
Suppression	Pronated outstretched arms and hands + request to suppress all other movements	20-30 seconds
Speech	Repetition, spontaneous sentences, sustained vowel phonation	Not applicable
Drinking	Drinking from a cup*	5 repetitions
Gait	Standing	20-30 seconds
	Walking	20-30 seconds
	Tandem gait	20-30 seconds

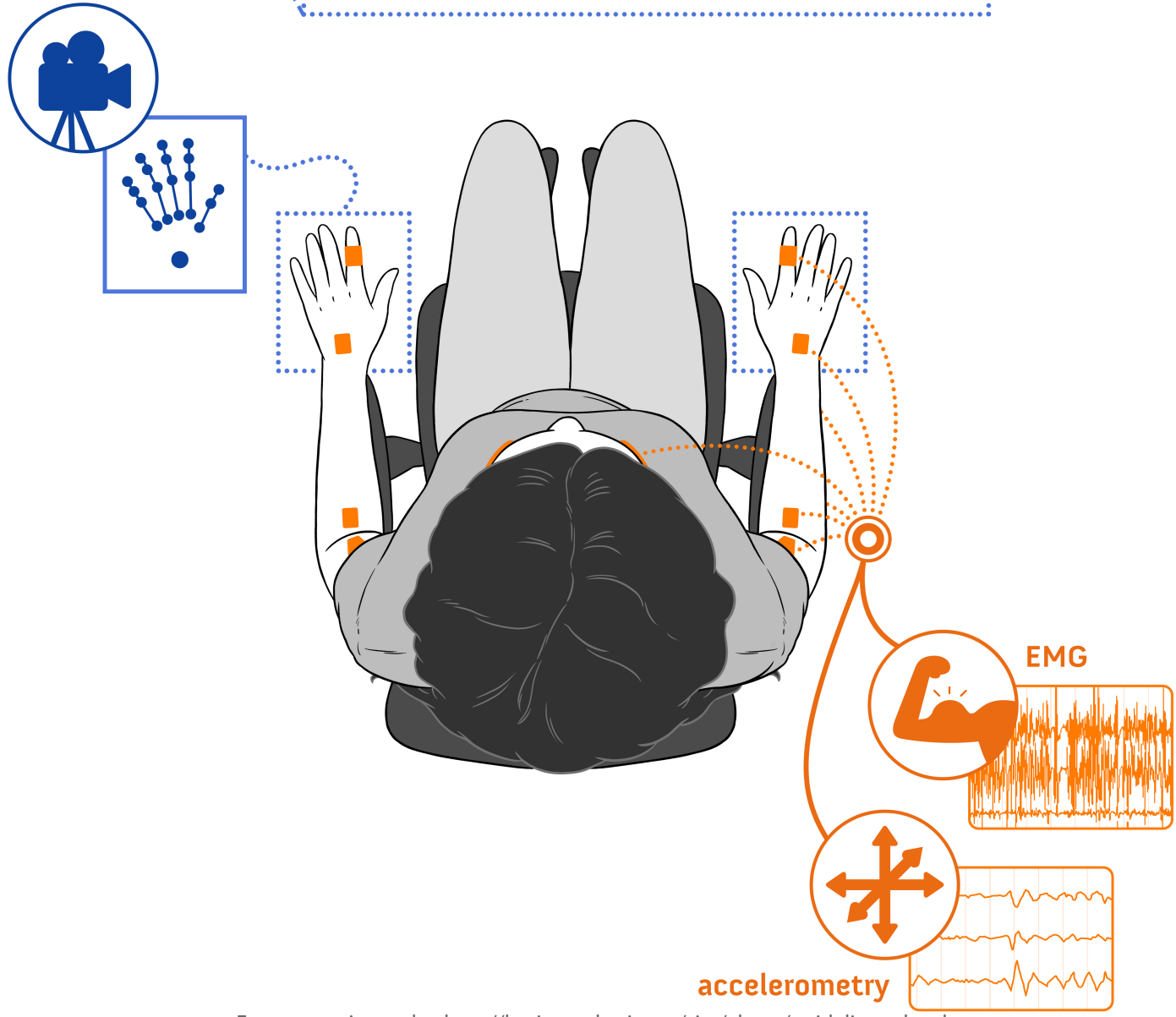
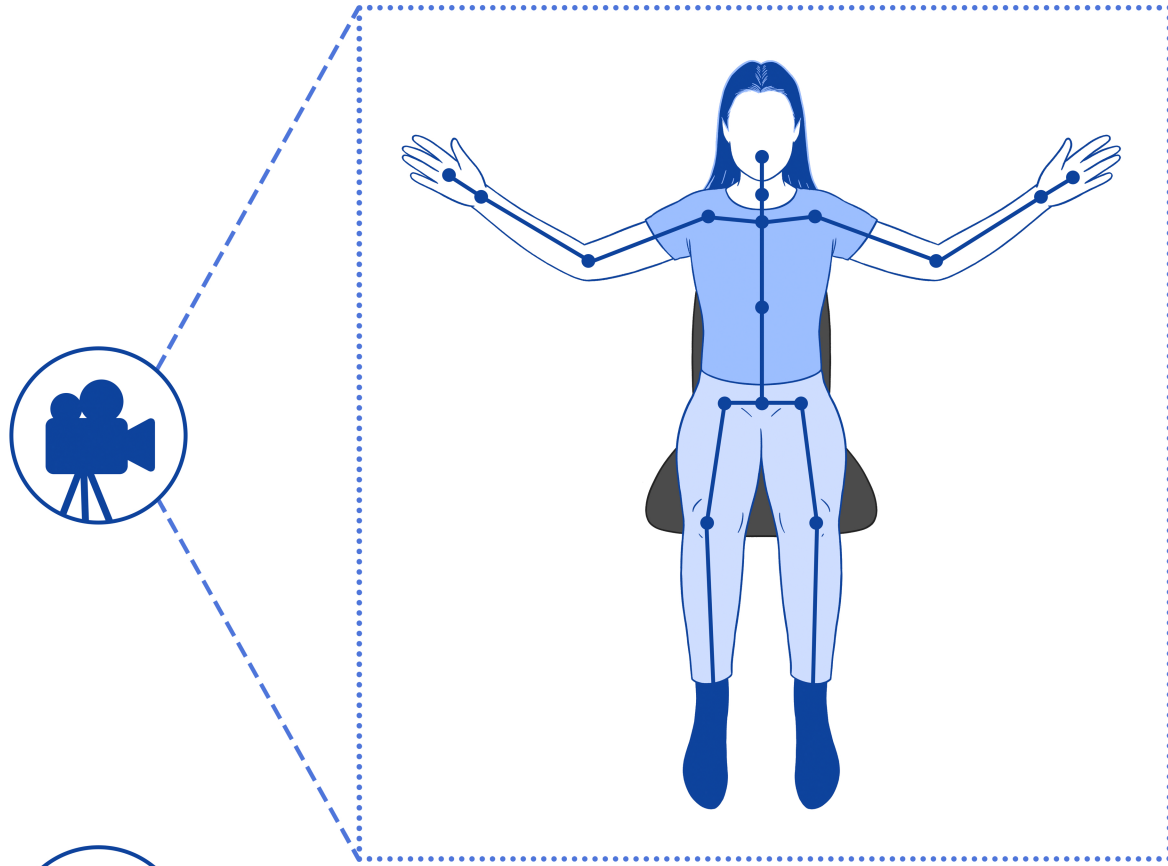
*All unilateral tasks are subsequently performed with the right and left hand.



For peer review only - <http://bmjopen.bmj.com/site/about/guidelines.xhtml>

1
2
3
4
5
6
7
8
9
10
11
12
13
14
15
16
17
18
19
20
21
22
23
24
25
26
27
28
29
30
31
32
33
34
35
36
37
38
39
40
41
42
43
44
45
46

1
2
3
4
5
6
7
8
9
10
11
12
13
14
15
16
17
18
19
20
21
22
23
24
25
26
27
28
29
30
31
32
33
34
35
36
37
38
39
40
41
42
43
44
45
46
47
48
49
50
51
52
53
54
55
56
57
58
59
60



BMJ Open

The next move in movement disorders (NEMO): developing a computer aided classification tool for hyperkinetic movement disorders.

Journal:	<i>BMJ Open</i>
Manuscript ID	bmjopen-2021-055068.R1
Article Type:	Protocol
Date Submitted by the Author:	14-Sep-2021
Complete List of Authors:	van der Stouwe, A.M.; University Medical Centre Groningen, Neurology; Expertise Centre Movement Disorders Groningen Tuitert, Inge; University Medical Centre Groningen, Neurology; Expertise Centre Movement Disorders Groningen Giotis, Ioannis; ZiuZ Visual Intelligence BV Calon, Joost; ZiuZ Visual Intelligence BV Gannamani, Rahul; University Medical Centre Groningen; Expertise Centre Movement Disorders Groningen Dalenberg, Jelle; University Medical Centre Groningen, Neurology; Expertise Centre Movement Disorders Groningen van der Veen, Sterre; University Medical Centre Groningen, Neurology; Expertise Centre Movement Disorders Groningen Klamer, M.R. (Marrit); University Medical Centre Groningen, Neurology; ZiuZ Visual Intelligence BV Telea, A.C. (Alex); Utrecht University Department of Information and Computing Sciences Tijssen, M.A.J. (Marina); University Medical Centre Groningen, Neurology; Expertise Centre Movement Disorders Groningen
Primary Subject Heading:	Neurology
Secondary Subject Heading:	Diagnostics
Keywords:	NEUROLOGY, NEUROPHYSIOLOGY, Adult neurology < NEUROLOGY

SCHOLARONE™
Manuscripts



I, the Submitting Author has the right to grant and does grant on behalf of all authors of the Work (as defined in the below author licence), an exclusive licence and/or a non-exclusive licence for contributions from authors who are: i) UK Crown employees; ii) where BMJ has agreed a CC-BY licence shall apply, and/or iii) in accordance with the terms applicable for US Federal Government officers or employees acting as part of their official duties; on a worldwide, perpetual, irrevocable, royalty-free basis to BMJ Publishing Group Ltd ("BMJ") its licensees and where the relevant Journal is co-owned by BMJ to the co-owners of the Journal, to publish the Work in this journal and any other BMJ products and to exploit all rights, as set out in our [licence](#).

The Submitting Author accepts and understands that any supply made under these terms is made by BMJ to the Submitting Author unless you are acting as an employee on behalf of your employer or a postgraduate student of an affiliated institution which is paying any applicable article publishing charge ("APC") for Open Access articles. Where the Submitting Author wishes to make the Work available on an Open Access basis (and intends to pay the relevant APC), the terms of reuse of such Open Access shall be governed by a Creative Commons licence – details of these licences and which [Creative Commons](#) licence will apply to this Work are set out in our licence referred to above.

Other than as permitted in any relevant BMJ Author's Self Archiving Policies, I confirm this Work has not been accepted for publication elsewhere, is not being considered for publication elsewhere and does not duplicate material already published. I confirm all authors consent to publication of this Work and authorise the granting of this licence.

The next move in movement disorders (NEMO): developing a computer aided classification tool for hyperkinetic movement disorders.

A.M.M. van der Stouwe^{1,2,CA}, I. Tuitert^{1,2}, I. Giotis^{1,3}, J. Calon^{1,3}, R. Gannamani^{1,2}, J.R. Dalenberg^{1,2}, S. van der Veen^{1,2}, M.R. Klamer^{1,2,3}, A.C. Telea⁴, M.A.J. Tijssen^{1,2}

¹Expertise Centre Movement Disorders Groningen, University Medical Center Groningen, Groningen, The Netherlands

²Department of Neurology, University Medical Centre Groningen, Groningen, The Netherlands

³ZiuZ Visual Intelligence BV, Gorredijk, The Netherlands

⁴Department of Computing Sciences, University of Utrecht, Utrecht, The Netherlands

CA - corresponding author: Hanzeplein 1, 9700 RB, Groningen, The Netherlands. Mail: a.m.m.van.der.stouwe@umcg.nl, phone: +31503612401

List of email addresses:

a.m.m.van.der.stouwe@umcg.nl

i.tuitert@umcg.nl

i.giotis@ziuz.com

j.calon@ziuz.com

r.gannamani@umcg.nl

j.r.dalenberg@umcg.nl

s.van.der.veen04@umcg.nl

m.r.klamer@umcg.nl

a.c.telea@uu.nl

m.a.j.de.koning-tijssen@umcg.nl

Word count: 3112

Abstract

Introduction: our aim is to develop a novel approach to hyperkinetic movement disorder classification, that combines clinical information, electromyography, accelerometry and video in a computer aided classification tool. We see this as the next step towards rapid and accurate phenotype classification, the cornerstone of both the diagnostic and treatment process.

Methods and analysis: the NEMO study is a cross-sectional study at Expertise Centre Movement Disorders Groningen, University Medical Centre Groningen. It comprises patients with single and mixed phenotype movement disorders. Single phenotype groups will firstly include dystonia, myoclonus, and tremor, and then chorea, tics, ataxia, and spasticity. Mixed phenotypes are myoclonus-dystonia, dystonic tremor, myoclonus ataxia, and jerky/tremulous functional movement disorders. Groups will contain 20 patients, or 40 healthy participants. The gold standard for inclusion consists of interobserver agreement on the phenotype amongst three independent clinical experts. Electromyography, accelerometry and 3D video data will be recorded during performance of a set of movement tasks, chosen by a team of specialists to elicit movement disorders. These data will serve as input for the machine learning algorithm. Labels for supervised learning are provided by the expert-based classification, allowing the algorithm to learn to predict what the output label should be when given new input data. Methods using manually engineered features based on existing clinical knowledge will be used, as well as deep learning methods which can detect relevant and possibly new features. Finally, we will employ visual analytics to visualise how the classification algorithm arrives at its decision.

Ethics and dissemination: ethical approval has been obtained from the relevant local ethics committee. The NEMO study is designed to pioneer the application of machine learning of movement disorders. We expect to publish articles in multiple related fields of research and patients will be informed of important results via patient associations and press releases.

Strengths and limitations of this study

- This cross-sectional study addresses a real need in classification of hyperkinetic movement disorders and may revolutionise our clinical approach.
- Representative patients from the entire hyperkinetic movement disorders spectrum will participate, including myoclonus, dystonia, tremor, chorea and tics, as well as ataxia, spasticity and functional movement disorders.
- An extensive data set will be collected and used for analysis: clinical information and data from EMG, accelerometry and 3D video.
- The project is a collaboration between movement disorders specialists at an acknowledged expertise centre and computer scientists in the corporate and academic world.
- Calculation of the needed sample size is hampered by the absence of previous studies in this exact field.

Funding statement

This work was supported by the European Fund for Regional Development of the European Union in collaboration with the province of Fryslan (grant number 01492947), and a ZonMW TOP Grant (grant number 91218013).

Competing interest statement

Authors IG, JC and MRK are employed by ZiuZ Visual Intelligence BV, a company with an interest in the development of software tools to aid medical care. Presently, there is no commercial stake in this project.

Data sharing statement

Unpublished data are primarily intended for researchers at the University Medical Center Groningen involved in the NEMO study. Access to data from external parties will be evaluated in a central meeting by the NEMO team.

Author contributions

Conception of the study: MAJT, ACT

Design of the experiment: AMMS, IT, IG, JC, RG, SV, MRK, ACT, MAJT

Writing of the article: AMMS, IT

Review and critique: IG, JC, RG, JRD, SV, MRK, ACT, MAJT

Introduction

The hyperkinetic movement disorders myoclonus, dystonia, tremor, chorea and tics are all characterised by excessive, involuntary movements (Table 1).¹ In a patient presenting with such a disorder, it is crucial to classify the movement disorder phenotype promptly and accurately, because the phenotype classification will guide clinical decisions on diagnostic testing and (symptomatic) treatment¹. Current clinical algorithms on hyperkinetic movement disorder diagnosis, whether aimed at dystonia², myoclonus³, or tremor⁴, all start with the same step: make sure to establish the main movement disorder phenotype in the patient. The subsequent diagnostic steps consist of additional tests such as laboratory, imaging, and genetic tests, which can greatly aid the patient's etiological diagnosis. The same holds for treatment: decisions on which medication to prescribe or which target to choose for deep brain stimulation are directed by the main clinical movement disorder phenotype.

Given the importance of clinical phenotype recognition, it is unfortunate that correct classification is difficult in many patients. While each phenotype of movement disorder has its own clinical presentation, complex and mixed forms occur. Moreover, the big five hyperkinetic phenotypes (myoclonus, dystonia, tremor, chorea and tics) may share overlapping clinical features with ataxia, spasticity and functional movement disorders. Presently, the classification of involuntary movements is based on clinical definitions and therefore on expert opinion. However, research demonstrated large inter- and intra-observer variability of clinical classification.⁵⁻⁸ This is a major problem that impairs correct phenotyping of patients which subsequently delays etiological diagnosis, deliverance of tailored treatment, and evaluation of treatment effects.

To improve the classification of hyperkinetic movement disorders we set up the current study, Next Move in Movement Disorders (NEMO). Our aim is to combine electromyography (EMG), motion sensors, and 3D video with machine learning to develop a computer aided classification tool for hyperkinetic movement disorders, which will help health care professionals establish the movement disorders phenotype. The algorithm of this computer aided classification tool will be trained with the input data from patients who have a hyperkinetic movement disorders phenotype on which a panel of blinded independent experts agree.

Currently, EMG and accelerometry are applied in clinical practice to support the clinical classification of movement disorders, particularly myoclonus, tremor, and dystonia. This is done by assessment of features such as muscle activation pattern, burst duration, and frequency. While not all applications are supported by extensive evidence, there is a long tradition and ample

1
2
3 experience with these methods.⁹ Despite the frequently incorporated clinical application of video
4 to discuss cases among panels of experts, the use of video to automatically detect, quantify, and
5 classify involuntary movements is still in its infancy. Some advances have recently been made in
6 using video for assessment of tremor frequency in a research setting¹⁰. While these first steps are
7 encouraging, application in other movement disorders is still lacking. Moreover, until now,
8 investigations of machine learning in movement disorders have mainly focussed on
9 quantification of the hyperkinetic movements¹¹ and optimisation of adaptive deep brain
10 stimulation.¹² Efforts to classify different types of hyperkinetic movement disorders have not yet
11 been made, to our knowledge.

12
13 In the NEMO project, we combine EMG, accelerometry, and video recordings to develop an
14 innovative new approach to movement disorder classification. We see the development of a
15 computer aided classification tool as the next step towards swift and accurate phenotype
16 classification of hyperkinetic movement disorders, the cornerstone of both the diagnostic and
17 treatment process.

28 **Methods**

30 *Study population*

31
32 The NEMO study protocol comprises patients with both single and mixed phenotype movement
33 disorders. Single phenotype groups will primarily include dystonia, myoclonus, and tremor, and
34 in the future chorea, tics, ataxia, and spasticity will be added. Although spasticity is not typically
35 classified as a movement disorder, this group is added for distinction from dystonia, as these two
36 neurological conditions are sometimes confused with one another.⁶ Similarly, ataxia is not usually
37 listed as a hyperkinetic movement disorder, but signs of ataxia can overlap with symptoms of
38 hyperkinetic movement disorders, making it a relevant phenotype to include.¹³ Mixed phenotype
39 groups will consist of myoclonus-dystonia, dystonic tremor, myoclonus ataxia, and
40 jerky/tremulous functional movement disorders. All patient groups will consist of 20
41 participants. In addition, a group of 40 healthy participants will be included. Patients will be
42 carefully selected based on all clinical information (MRK, AMMS, MAJT): after participating in the
43 experiment, their data will be reviewed by a panel of experts to assess their phenotype and
44 whether they meet the gold standard for inclusion.

45
46 Participants will only be eligible for inclusion if they are at least 16 years old. Exclusion criteria
47 consist of comorbid conditions that lead to impaired upper extremity function, and a silver allergy
48 or implanted pacemaker due to incompatibility with the EMG device. Moreover, healthy
49 participants cannot be first degree relatives of patients with hyperkinetic movement disorders.
50
51
52
53
54
55
56
57
58
59
60

Recruitment

Patients will be selected from the University Medical Center Groningen (UMCG) hyperkinetic movement disorders database and recruited at the UMCG outpatient clinic. If patient inclusion using these two sources does not lead to the targeted number of patients, we will recruit at other hospitals and via patient associations. Healthy participants will also be recruited at the UMCG. Participants will receive written information about the study and will have the opportunity to ask the investigators questions beforehand. Prospective participants can also call upon an independent neurologist, who is not involved in the NEMO study, if they have any remaining questions. All participants will give written informed consent before enrolment.

Study setting

Movement Disorders Groningen, based at the UMCG, is uniquely positioned for the conduction of the NEMO study, as we treat patients with a broad range of hyperkinetic movement disorders. Movement Disorders Groningen is acknowledged by the Dutch Federation of University Medical Centres (NFU) as an official centre of expertise, and it is part of the European Reference Network for rare diseases. Data analysis will be performed in collaboration with ZiuZ Visual Intelligence BV (IG, JC), and the departments of computing science at the University of Utrecht (ACT) and the University of Groningen.

Experimental setup

Clinical information

Clinical information such as age at onset, family history, disease progression, medication use, symptom influencing factors, and psychological complaints will be acquired from the participants during their study visit. Moreover, the influence of their movement disorder on activities of daily life will be assessed using the Fahn-Tolosa-Marin Essential Tremor Rating Scale part C¹⁴, with additional questions that originate from the Burke-Fahn-Marsden Dystonia Rating Scale¹⁵, SARA Ataxia Scale¹⁶, Unified Myoclonus Rating Scale¹⁷, Shapiro Tourette's Syndrome Severity Scale¹⁸, and Abnormal Involuntary Movement Scale¹⁹. Additionally, patients will be asked to indicate the perceived severity of their movement disorder on a visual analogue scale.

Movement tasks

Data will be collected while participants are performing several movement tasks. These tasks are selected from the Fahn-Tolosa-Marin Essential Tremor Rating Scale¹⁴, Burke-Fahn Marsden Dystonia Rating Scale¹⁵, SARA Ataxia Scale¹⁶, Unified Myoclonus Rating Scale¹⁷, Shapiro Tourette's Syndrome Severity Scale¹⁸, and Abnormal Involuntary Movement Scale¹⁹. All of these are validated scales, used both in clinical practise and in experimental settings to assess the severity

1
2
3 of specific movement disorders. As such, they contain tasks that are designed to elicit the
4 movement disorder in a patient, enabling assessment of severity. Selection of tasks was discussed
5 in depth with seven movement disorders, neuropsychiatric, and neurorehabilitation specialists
6 with particular experience in the field of dystonia, myoclonus, tremor, chorea, tics, ataxia or
7 spasticity to ensure comprehensive coverage of all disorders. Table 2 lists the set of tasks to be
8 included. A trained investigator will instruct the participant before the recording of each task. If
9 the task is not performed as instructed or the data collection was suboptimal, the patient is asked
10 to repeat the task. Version control of tasks is used to ensure that the correct version of the task is
11 included in the data analysis.
12
13
14
15
16
17

18 19 *Data collection*

20 Data from electromyography, motion sensors, and 3D video will be collected simultaneously
21 using custom made software (Visual Studio, Microsoft, USA). Surface EMG and motion sensor data
22 will be recorded using the Trigno system (Delsys, Massachusetts, USA). Data collection
23 frequencies of the EMG and the motion sensors are 2000 Hz and 150 Hz respectively. The Trigno
24 Avanti sensors measure muscle activity, 3D accelerometry, 3D gyroscope, and 3D magnetometry
25 in each single wireless device. Ten Trigno Avanti sensors will be placed bilaterally on the
26 participant's arms and neck, aiming for the m. biceps, m. triceps, m. extensor carpi radialis, m.
27 flexor carpi ulnaris, and on both index fingers for accelerometry purposes only. Additionally, the
28 Trigno Mini sensors measure muscle activity, using the sensor head, and 3D accelerometry, using
29 the sensor base, in each single wireless device. The six Trigno Mini sensor heads, registering EMG
30 data, will be placed bilaterally aiming for the m. abductor pollicis, m. abductor digiti quinti, and
31 m. sternocleidomastoideus. The six Trigno Mini sensor bases, registering accelerometry, will be
32 placed bilaterally at the inside of the forearm near the wrist, the back of the hand, and the jaw.
33 Figure 1 illustrates the placement of the EMG and motion sensors.
34
35
36
37
38
39
40
41
42

43 3D video data will be recorded using two types of 3D video cameras. A Realsense D435 camera
44 (frame rate 30 fps; Intel, California, USA) will be used for whole body tracking; two Leap Motion
45 cameras (frame rate 120 fps; Leap Motion, California, USA) will be employed to track the hands
46 specifically. For the Realsense D435 camera, the NuiTrack API (3DiVi, California, USA) is used to
47 extract joints from the depth frames. Aside from the depth frames, the Realsense D435 camera
48 also collects 2D colour frames at 30 fps. The Leap Motion camera uses an internal algorithm to
49 extract joints from the depth frames. Figure 2 depicts which body parts are tracked by the
50 cameras.
51
52
53
54
55

56 The electromyography, motion sensors, and 3D video data all have different sampling frequencies
57 or frame rates. To enable synchronization of modalities, a time stamp of each data sample point
58 is saved during data acquisition.
59
60

Sample size

For the current study, artificial intelligence experts expect that 20 subjects per patient group will be sufficient to develop proof-of-principle for a computer aided diagnosis tool, because of the extensive amount of data that is collected per participant. Calculation of the needed sample size is hampered by the absence of previous studies in this exact field. While machine learning with, for example, MRI²⁰ and EEG²¹ data has previously been used to classify other diseases, both these data and disorders differ from the proposed study and are therefore not suitable to perform power analyses.

Data management

Study data will be handled confidentially and in accordance with the European personal data protection regulation (General Data Protection Regulation). A unique identification code will be assigned to each participant. All raw de-identified EMG, motion sensor, and 3D video data will be stored at the research drive hosted and provided by the UMCG. Pre-processed data will be stored and analysed in the virtual research workspace, a secure virtualised desktop environment provided and hosted by the University of Groningen. De-identified clinical data is collected and managed using REDCap electronic data capture tools hosted at the UMCG.^{22,23}

Data analysis

Gold standard

The “gold standard” for phenotype classification is defined as inter-observer agreement amongst three experienced (inter)national clinical experts who will each assess the phenotype of a patient independently. Their evaluation will be based on the video recordings (RGB, 2D) of the participants performing all the different tasks described in Table 2 during the experiment. Moreover, a sound fragment is recorded of the patient’s speech for the experts’ assessment. They will also be presented with information from the history and ancillary tests, to mimic the typical outpatient clinic situation as best as we can. The experts will be blind to the phenotype classification made by the investigators. All video data for the experts can be reviewed using the virtual research workspace and the relevant clinical information can be assessed in REDCap. Inter-observer agreement among the clinical experts will be calculated using Fleiss’ kappa (K).²⁴ We consider a Fleiss’ K value above 0.80 (interpreted as excellent agreement) across all groups as sufficient. Moreover, for each individual participant, a minimum of two out of three experts should be in agreement. If a participant does not meet this requirement, their data will be excluded from further analysis.

Machine learning analyses

To develop the computer aided classification tool, several machine learning techniques will be used. The clinical parameters, EMG, motion sensors, and 3D video data will serve as input for the machine learning algorithm. The expert-based phenotype classification will serve as patient labels for supervised learning. In supervised machine learning, an algorithm is trained with multiple examples with a known output label (the expert-based phenotype classification), learning how to process the input data (clinical, EMG, motion sensor, and video data) to reproduce the output label. The fully trained algorithm can then be given new input data, and is able to predict what the output label should be, making these types of algorithms well suited for classification.²⁵ Examples of machine learning techniques that will be investigated include deep learning methods such as long short-term memory networks²⁶ and methods based on manually engineered features such as random forest classifiers^{27,28} and learning vector quantization^{29,30} using features from clinical neurophysiology research and practice (e.g. frequency analysis or intermuscular coherence). From the above classes, deep learning methods have the advantage of computational scalability and the ability to automatically extract the relevant features for classification. In contrast, methods using manually engineered features allow one to control which aspects of the data are used by the classifier to reach its decisions and thus can be trained with fewer data to arrive at high accuracies. The information about how machine learning algorithms arrive at their output labels is often limited, which can mask confounding factors or simply diminish trust in the produced outputs. To address this problem, we will employ visual analytics to visualise how the classification algorithm arrives at its decision, and in particular which data aspects it uses to reach that decision.

Ethics and dissemination

The NEMO study protocol has been approved by the Medical Ethical Committee (METc 2018-444) of the UMCG and will be conducted according to the ethical standards of the Helsinki Declaration. This study is designed to pioneer the application of machine learning in the classification of movement disorders, and allows for comprehensive data collection of clinical information, EMG and motion sensor data, and 3D video. Because of its scope, we expect to publish multiple articles in the fields of clinical neurology, particularly movement disorders, clinical neurophysiology, artificial intelligence, and visual analytics. Moreover, patients will be informed of important study results via the different patient associations, press releases, the website www.movementdisordersgroningen.com, and at the Movement Disorders Groningen biannual Patient Day.

Patient and public involvement

1
2
3 Members of the Movement Disorders Groningen Patient Council are updated regularly about the
4 progress of the NEMO study and advise on online patient information. The help of several patient
5 associations is enlisted for the recruitment of participants. Dissemination to patients and the
6 general public is described above.
7
8
9

10 11 *Funding*

12 This study is partly subsidised by the European Fund for Regional Development of the European
13 Union (grant number 01492947), the province of Fryslan, and a ZonMW TOP Grant (grant
14 number 91218013).
15
16
17

18 19 **Discussion**

20 The NEMO study seeks to develop a computer aided classification tool for hyperkinetic movement
21 disorders. Such a tool would aid doctors in establishing the movement disorders phenotype. As
22 adequate phenotype classification is the foundation of clinical decision making and treatment of
23 hyperkinetic movement disorders, improving this process would ultimately result in swifter and
24 more accurate diagnoses and treatment for patients. To this end, we will investigate patients with
25 myoclonus, dystonia, tremor, chorea, tics, and functional jerky/tremulous movement disorders,
26 as well as the related disorders ataxia and spasticity.
27
28
29
30
31

32
33 Our study has several strengths and some possible limitations. A major strength of this study is
34 that it is conducted at a leading centre of expertise for movement disorders, Movement Disorders
35 Groningen at the UMCG, the Netherlands. Experts in the field of all hyperkinetic movement
36 disorders are present for collaboration and patient recruitment. For example, several experts
37 assisted in selection of the appropriate tasks that patients will perform during the experiment,
38 ensuring proper investigation of all relevant movement disorders. Also, the centre has a large
39 patient database, which is a substantial advantage as some movement disorders are rare.
40 Moreover, we have good rapport with our centre's patient council, who can advise on recruitment
41 and dissemination of results. Disease rarity might still limit our speed of inclusion, a potential
42 limitation, but given the advantages linked to our centre of expertise as well as the collaborations
43 that exist with other centres, we are confident we will include enough patients in each group.
44
45
46
47
48
49
50
51

52
53 A second significant strength is the collection and analysis of extensive data: both clinical
54 information and data from EMG, motion sensors, and 3D video. In the analysis of these data, we
55 can make use of the expertise of several members in our team. For instance, we have ample
56 experience with the analysis of EMG and motion sensor data in movement disorders patients at
57 the department of clinical neurophysiology.³¹⁻³⁴ Similarly, ZiuZ Visual Intelligence BV, a major
58
59
60

1
2
3 collaborator in this project, has a proven track record of developing and deploying systems that
4 collect and analyse visual data in different sectors and thus the required expertise for designing
5 and implementing the computer-aided diagnosis tool as well as the data acquisition software for
6 NEMO. In addition, academic input on the topic of machine learning and visual analytics is
7 available from the University of Utrecht³⁵⁻³⁸ and the University of Groningen.³⁹⁻⁴²
8
9
10
11
12

13 *Significance*

14 The aim of this study is to move the classification of movement disorder phenotypes forward, to
15 improve the diagnostic process and optimise treatment in hyperkinetic movement disorders
16 patients. This could be achieved by the development of an all-encompassing computer aided
17 diagnostic tool for all hyperkinetic movement disorder phenotypes, which is the ultimate goal.
18 Such a tool would be a game changer, helping neurologists to establish the phenotype in their
19 patients with more certainty, so they can swiftly move on to other investigations into etiology and
20 to start the correct treatment.
21

22 In the process, it is likely that several new diagnostic biomarkers for hyperkinetic movement
23 disorders will be discovered. These biomarkers can have their bearing on the current clinical
24 practice quite quickly, particularly if they are in the fields of electromyography or accelerometry
25 because these techniques are already widely applied in movement disorders diagnostics.
26

27 Additionally, the tool that is being developed in the current study could be used to monitor
28 disease severity and progression. This is of relevance for the monitoring of patients during
29 treatment, for instance before and after deep brain stimulation. Another application could be
30 patient assessment in clinical trials.
31
32
33
34
35
36
37
38
39

40 *Study status*

41 Data collection is in progress.
42
43
44
45
46

47 **Tables & figures**

48
49 Table 1: description of hyperkinetic movement disorders & related disorders.

50 Table 2: description of the included tasks.

51 Figure 1: depiction of sensor placement.

52 Figure 2: depiction of the study set-up & data collection.
53
54
55
56
57
58
59
60

References

1. Abdo WF, van de Warrenburg BPC, Burn DJ, Quinn NP, Bloem BR. The clinical approach to movement disorders. *Nat Rev Neurol*. 2010;6(1):29-37. doi:10.1038/nrneurol.2009.196
2. Van Egmond ME, Kuiper A, Eggink H, et al. Dystonia in children and adolescents: A systematic review and a new diagnostic algorithm. *J Neurol Neurosurg Psychiatry*. 2015;86(7):774-781. doi:10.1136/jnnp-2014-309106
3. Zutt R, Van Egmond ME, Elting JW, et al. A novel diagnostic approach to patients with myoclonus. *Nat Rev Neurol*. 2015;11(12):687-697. doi:10.1038/nrneurol.2015.198
4. Wardt J Van De, Van Der Stouwe AMM, Dirks M, et al. Systematic clinical approach for diagnosing upper limb tremor. *J Neurol Neurosurg Psychiatry*. 2020;91(8):822-830. doi:10.1136/jnnp-2019-322676
5. Defazio G, Abbruzzese G, Livrea P, Berardelli A. Epidemiology of primary dystonia. *Lancet Neurol*. 2004;3(11):673-678. doi:10.1016/S1474-4422(04)00907-X
6. Eggink H, Kremer D, Brouwer OF, et al. Spasticity, dyskinesia and ataxia in cerebral palsy: Are we sure we can differentiate them? *Eur J Paediatr Neurol*. 2017;21(5):703-706. doi:10.1016/j.ejpn.2017.04.1333
7. Beghi E, Regio V, Papantonio A, et al. Reliability of clinical diagnosis of dystonia. *Neuroepidemiology*. 2014;43(3-4):213-219. doi:10.1159/000367628
8. van der Salm SMA, de Haan RJ, Cath DC, van Rootselaar A-F, Tijssen MAJ. The eye of the beholder: inter-rater agreement among experts on psychogenic jerky movement disorders. *J Neurol Neurosurg Psychiatry*. 2013;84(7):742-747. doi:10.1136/jnnp-2012-304113
9. van der Veen S, Klamer MR, Elting JWJ, Koelman JHTM, Van der Stouwe AMM, Tijssen MAJ. The diagnostic value of clinical neurophysiology in hyperkinetic movement disorders: a systematic review. *Parkinsonism Relat Disord*. Published online July 2021. doi:10.1016/j.parkreldis.2021.07.033
10. Williams S, Fang H, Relton SD, Wong DC, Alam T, Alty JE. Accuracy of Smartphone Video for Contactless Measurement of Hand Tremor Frequency. *Mov Disord Clin Pract*. 2021;8(1):69-75. doi:10.1002/mdc3.13119
11. Zhan A, Mohan S, Tarolli C, et al. Using smartphones and machine learning to quantify Parkinson disease severity the mobile Parkinson disease score. *JAMA Neurol*. 2018;75(7):876-880. doi:10.1001/jamaneurol.2018.0809
12. Habets JGV, Heijmans M, Kuijf ML, Janssen MLF, Temel Y, Kubben PL. An update on adaptive deep brain stimulation in Parkinson's disease. *Mov Disord*. 2018;33(12):1834-

- 1
2
3 1843. doi:10.1002/mds.115
4
5 13. Brandsma R, Verschuuren-Bemelmans CC, Amrom D, et al. A clinical diagnostic algorithm
6 for early onset cerebellar ataxia. *Eur J Paediatr Neurol*. 2019;23(5):692-706.
7 doi:10.1016/j.ejpn.2019.08.004
8
9 14. Fahn S, Tolosa E, Marin C. Clinical Rating Scale for Tremor. 1988;2:271-280.
10
11 15. Burke RE, Fahn S, Marsden CD, Bressman SB, Moskowitz C, Friedman J. Validity and
12 reliability of a rating scale for the primary torsion dystonias. *Neurology*. 1985;35(1):73-
13 77. doi:10.1212/wnl.35.1.73
14
15 16. Schmitz-Hübsch T, Du Montcel ST, Baliko L, et al. Scale for the assessment and rating of
16 ataxia: Development of a new clinical scale. *Neurology*. 2006;66(11):1717-1720.
17 doi:10.1212/01.wnl.0000219042.60538.92
18
19 17. Frucht SJ, Leurgans SE, Hallett M, Fahn S. The Unified Myoclonus Rating Scale. *Adv Neurol*.
20 2002;89:361-376.
21
22 18. Shapiro A, Shapiro E, Young J, Feinberg T. *Gilles de La Tourette Syndrome*.; 1988.
23
24 19. Guy W. *ECDEU Assessment Manual for Psychopharmacology (1976 Edition) | Open Library*.;
25 1976.
26
27 20. Boudraa AO, Dehak SMR, Zhu YM, Pachai C, Bao YG, Grimaud J. Automated segmentation
28 of multiple sclerosis lesions in multispectral MR imaging using fuzzy clustering. *Comput
29 Biol Med*. 2000;30(1):23-40. doi:10.1016/S0010-4825(99)00019-0
30
31 21. Aslan K, Bozdemir H, Şahin C, Oğulata SN, Erol R. A radial basis function neural network
32 model for classification of epilepsy using EEG signals. *J Med Syst*. 2008;32(5):403-408.
33 doi:10.1007/s10916-008-9145-9
34
35 22. Harris PA, Taylor R, Thielke R, Payne J, Gonzalez N, Conde JG. Research electronic data
36 capture (REDCap)-A metadata-driven methodology and workflow process for providing
37 translational research informatics support. *J Biomed Inform*. 2009;42(2):377-381.
38 doi:10.1016/j.jbi.2008.08.010
39
40 23. Harris PA, Taylor R, Minor BL, et al. The REDCap consortium: Building an international
41 community of software platform partners. *J Biomed Inform*. 2019;95:103208.
42 doi:10.1016/j.jbi.2019.103208
43
44 24. Fleiss JL. Measuring nominal scale agreement among many raters. *Psychol Bull*.
45 1971;76(5):378-382. doi:10.1037/h0031619
46
47 25. Auger SD, Jacobs BM, Dobson R, Marshall CR, Noyce AJ. Big data, machine learning and
48 artificial intelligence: A neurologist's guide. *Pract Neurol*. 2020;21(1):4-11.
49 doi:10.1136/practneurol-2020-002688
50
51 26. Hochreiter S, Schmidhuber J. Long Short-Term Memory. *Neural Comput*. 1997;9(8):1735-
52 1780. doi:10.1162/neco.1997.9.8.1735
53
54
55
56
57
58
59
60

- 1
2
3 27. Breiman L. Random forests. *Mach Learn.* 2001;45(1):5-32.
4 doi:10.1023/A:1010933404324
5
- 6 28. Kulkarni VY. *Random Forest Classifiers :A Survey and Future Research Directions.* Vol 36.
7
- 8 29. Schneider P, Biehl M, Hammer B. Adaptive relevance matrices in learning vector
9 quantization. *Neural Comput.* 2009;21(12):3532-3561. doi:10.1162/neco.2009.11-08-
10 908
11
- 12 30. Biehl M. Biomedical applications of prototype based classifiers and relevance learning. In:
13 *Lecture Notes in Computer Science (Including Subseries Lecture Notes in Artificial*
14 *Intelligence and Lecture Notes in Bioinformatics).* Vol 10252 LNCS. Springer Verlag;
15 2017:3-23. doi:10.1007/978-3-319-58163-7_1
16
- 17 31. Zutt R, Elting JW, Van Zijl JC, et al. Article open access Electrophysiologic testing AIDS
18 diagnosis and subtyping of myoclonus. *Neurology.* 2018;90(8):E647-E657.
19 doi:10.1212/WNL.0000000000004996
20
- 21 32. van der Stouwe AMM, Elting JW, van der Hoeven JH, et al. How typical are “typical”
22 tremor characteristics? Sensitivity and specificity of five tremor phenomena.
23 *Parkinsonism Relat Disord.* 2016;30:23-28. doi:10.1016/j.parkreldis.2016.06.008
24
- 25 33. van der Stouwe AMM, Conway BA, Elting JW, Tijssen MAJ, Maurits NM. Usefulness of
26 intermuscular coherence and cumulant analysis in the diagnosis of postural tremor. *Clin*
27 *Neurophysiol.* 2015;126(8). doi:10.1016/j.clinph.2014.10.157
28
- 29 34. Kramer G, Van der Stouwe AMM, Maurits NM, Tijssen MAJ, Elting JWJ. Wavelet coherence
30 analysis: A new approach to distinguish organic and functional tremor types. *Clin*
31 *Neurophysiol.* 2018;129(1). doi:10.1016/j.clinph.2017.10.002
32
- 33 35. Schneider P, Biehl M, Hammer B. Distance learning in discriminative vector quantization.
34 *Neural Comput.* 2009;21(10):2942-2969. doi:10.1162/neco.2009.10-08-892
35
- 36 36. Bunte K, Schneider P, Hammer B, Schleif FM, Villmann T, Biehl M. Limited Rank Matrix
37 Learning, discriminative dimension reduction and visualization. *Neural Networks.*
38 2012;26:159-173. doi:10.1016/j.neunet.2011.10.001
39
- 40 37. Schneider P, Bunte K, Stiekema H, Hammer B, Villmann T, Biehl M. Regularization in
41 matrix relevance learning. *IEEE Trans Neural Networks.* 2010;21(5):831-840.
42 doi:10.1109/TNN.2010.2042729
43
- 44 38. Bunte K, Biehl M, Hammer B. A general framework for dimensionality-reducing data
45 visualization mapping. *Neural Comput.* 2012;24(3):771-804. doi:10.1162/NECO_a_00250
46
- 47 39. Rauber PE, Fadel SG, Falcao AX, Telea AC. Visualizing the Hidden Activity of Artificial
48 Neural Networks. *IEEE Trans Vis Comput Graph.* 2017;23(1):101-110.
49 doi:10.1109/TVCG.2016.2598838
50
- 51 40. Rauber PE, Falcão AX, Telea AC. *Visualizing Time-Dependent Data Using Dynamic t-SNE*
52
53
54
55
56
57
58
59
60

1
2
3 (EuroVis).; 2016. doi:10.2312/eurovisshort.20161164
4

5 41. Vernier EF, Comba JLD, Telea AC. *Guided Stable Dynamic Projections*. Vol 40.; 2021.

6 42. Espadoto M, Martins RM, Kerren A, Hirata NST, Telea AC. Toward a Quantitative Survey
7 of Dimension Reduction Techniques. *IEEE Trans Vis Comput Graph*. 2021;27(3):2153-
8 2173. doi:10.1109/TVCG.2019.2944182
9
10
11
12
13
14
15
16
17
18
19
20
21
22
23
24
25
26
27
28
29
30
31
32
33
34
35
36
37
38
39
40
41
42
43
44
45
46
47
48
49
50
51
52
53
54
55
56
57
58
59
60

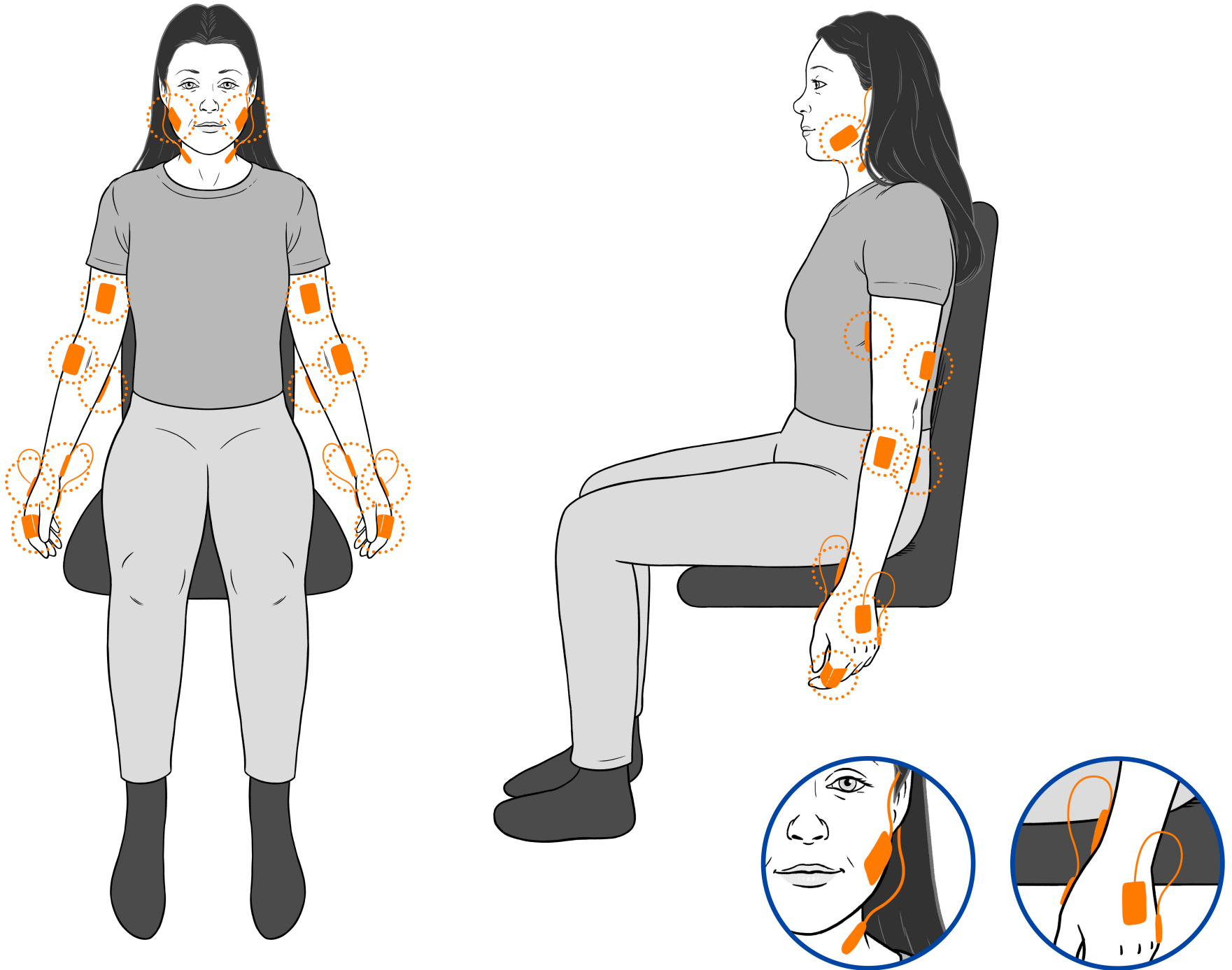
Table 1. Hyperkinetic movement disorders and related disorders.

Disorder	Clinical characteristics
Dystonia	Persistent or intermittent muscle contractions that lead to abnormal movements and/or postures.
Myoclonus	Sudden, brief, shock-like movements.
Tremor	Rhythmic, oscillatory movement of a body part.
Chorea	Continuous, abrupt, unpredictable non-rhythmic jerky movements.
Tics	Stereotyped, repeating, shock-like movements, which can be temporarily repressed. Patients feel an urge preceding the movements.
Ataxia	Inability to perform smooth, coordinated, targeted movements.
Spasticity	Variable combination of paresis, elevated reflexes and increased muscle tone.

Table 2. Included tasks.

Type of task	Task description	Duration/repetitions
Rest	Arms at rest, in a relaxed position on the participant's lap and supinated hands	20-30 seconds
Postural tasks	Supinated outstretched arms and hands	20-30 seconds
	Pronated outstretched arms and relaxed wrists	20-30 seconds
	Pronated outstretched arms and hands	20-30 seconds
	Pronated outstretched arms and extended wrists	20-30 seconds
	Hands in front of chest: shoulders abducted at 90 degrees, fingers pointing towards each other	20-30 seconds
	Index finger in front of nose*	20-30 seconds
Dexterity	Spiral drawing*	1 Archimedes spiral
	Writing*	1 sentence
	Nine-hole pegboard test*	1 test
	Diadochokinesis	20-30 seconds
Finger tapping	Finger tapping task: metronome cue* (3 and 5 Hz)	20 seconds
	Finger tapping task: self-paced*	20-30 seconds
	Four-finger tapping task*	20-30 seconds
Pointing tasks	Simple finger-to-nose manoeuvre*	5 repetitions
	Point-to-nose test*	12 repetitions
	Point-to-point test*	12 repetitions
Mental distraction	Pronated outstretched arms and hands + "serial sevens" (100 - 7 - 7 etc.)	20-30 seconds
Suppression	Pronated outstretched arms and hands + request to suppress all other movements	20-30 seconds
Speech	Repetition, spontaneous sentences, sustained vowel phonation	Not applicable
Drinking	Drinking from a cup*	5 repetitions
Gait	Standing	20-30 seconds
	Walking	20-30 seconds
	Tandem gait	20-30 seconds

*All unilateral tasks are subsequently performed with the right and left hand.



For peer review only - <http://bmjopen.bmj.com/site/about/guidelines.xhtml>

1
2
3
4
5
6
7
8
9
10
11
12
13
14
15
16
17
18
19
20
21
22
23
24
25
26
27
28
29
30
31
32
33
34
35
36
37
38
39
40
41
42
43
44
45
46

1
2
3
4
5
6
7
8
9
10
11
12
13
14
15
16
17
18
19
20
21
22
23
24
25
26
27
28
29
30
31
32
33
34
35
36
37
38
39
40
41
42
43
44
45
46
47
48
49
50
51
52
53
54
55
56
57
58
59
60

