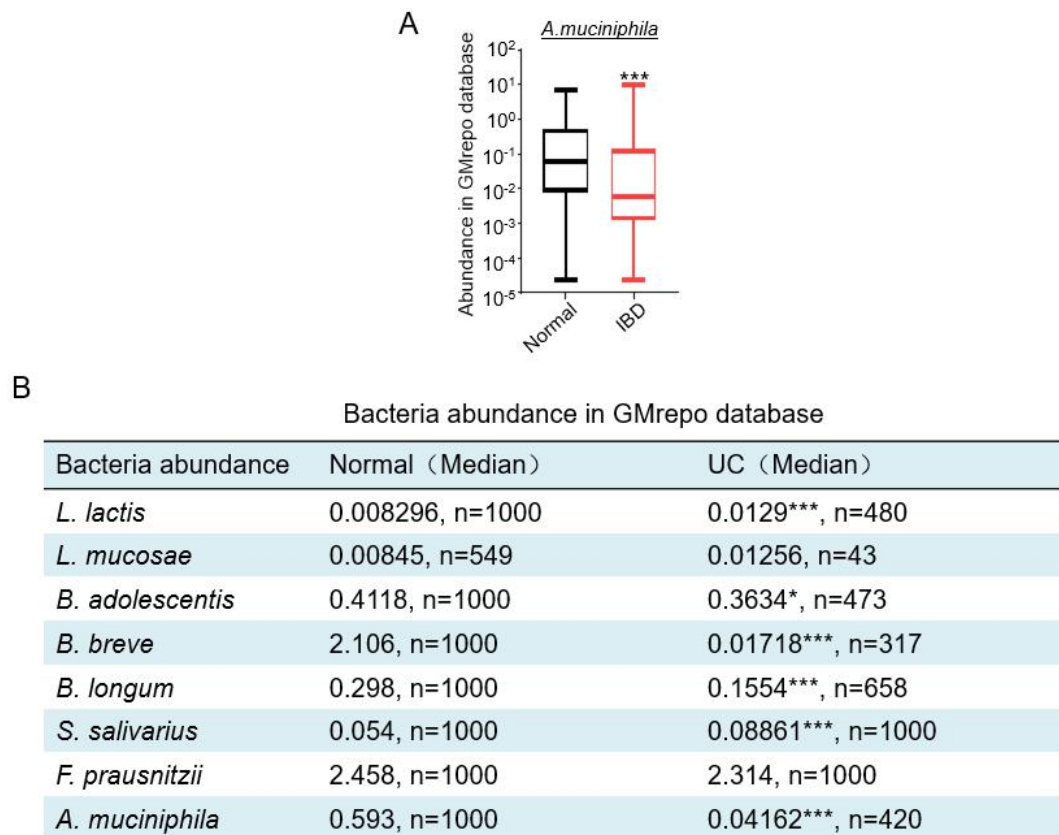


Supplementary materials



Supplementary Figure 1. (A) The level of *A. muciniphila* in the stool of normal people (n=1000) and IBD patients (n=399) in GMrepo database. (B) Details of the abundance of *L. lactis*, *L. mucosae*, *B. adolescentis*, *B. breve*, *B. longum*, *S. salivarius*, *F. prausnitzii* and *A. muciniphila* in the stool of normal people and UC patients in GMrepo database including exact sample numbers, medians and values, the graph (in Figure 1) exactly matched with this table. *p < 0.05, ***p < 0.001 (Mann Whitney test). IBD, inflammatory bowel disease; UC, ulcerative colitis.

Supplementary Table1. The clinical characteristics of UC patients

Cohort	Mean±SD	
	Low-Akk (n=6)	High-Akk (n=6)
Age	48±10.8	39.5±12.1
Sex		
Male	2	3
Female	4	3
Height (m)	1.7±0.1	1.6±0.1
Body weight(kg)	60.2±10.7	58.3±5.6
BMI(kg/m ²)	21.7±2.4	21.8±1.9
Smoking		
Yes	0	0
No	6	6
Drinking		
Yes	0	0
No	6	6
Activity		
Mild	3	3
Moderate	3	2
Severe	0	1