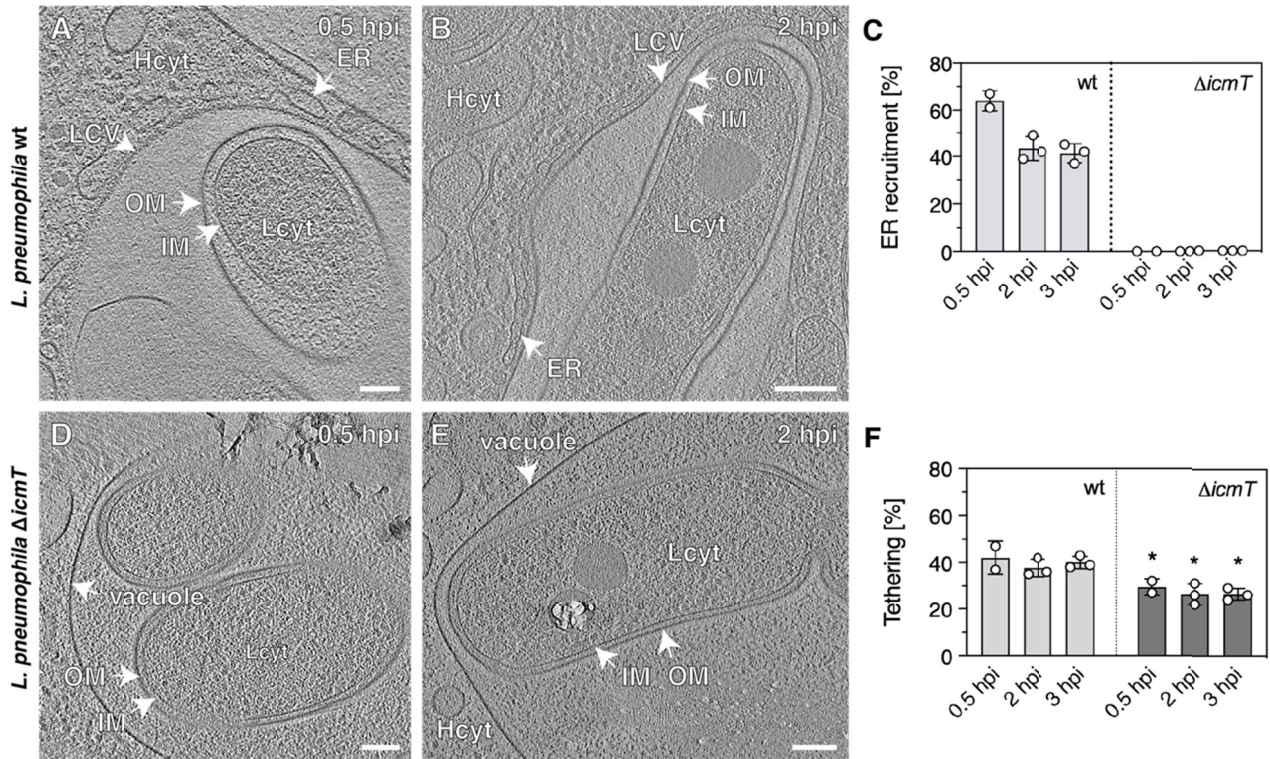


## Supplementary Figures

**Figure S1**



**Figure S1. *L. pneumophila* wild-type tethers its cell pole to the LCV membrane in *D. discoideum*.** Representative 2-D images of cryotomograms of (A-B) *L. pneumophila* wild-type residing in a mature, ER-decorated LCV (30 min pi,  $n^{LCVs}=18$ ; 2 hpi,  $n^{LCVs}=23$ ). Vacuoles containing (C-E)  $\Delta icmT$  mutant bacteria were never decorated with ER (30 min pi,  $n^{LCVs}=7$ ; 2 hpi,  $n^{LCVs}=6$ ). (F) Quantifications of cell-pole-tethering over time. Data in (C) and (F) are represented as mean  $\pm$  SD. from at least two independent infection experiments ( $*P<0.05$ ). Shown are 12 nm tomographic slices. OM, outer membrane; IM, inner membrane; LCV, LCV membrane; Lcyt, *L. pneumophila* cytoplasm; Hcyt, host cell cytoplasm; ER, endoplasmic reticulum; Scale bars, 100 nm.