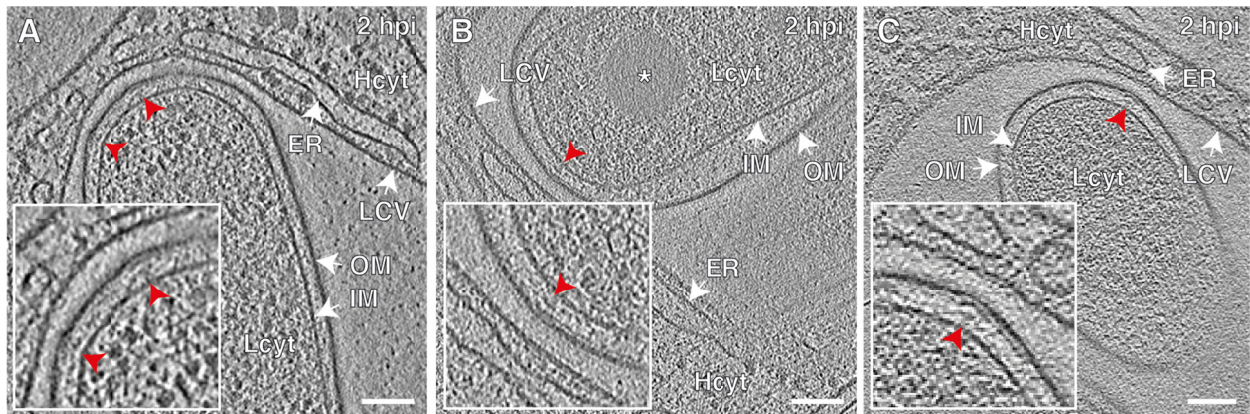


**Figure S4**



**Figure S4. The Icm/Dot T4SS localizes to the bacterial cell poles in infected amoebae.** Cryotomograms showing that intracellular *L. pneumophila* wild-type harbored one or more T4SSs at the bacterial cell pole (red arrowhead) in (A) *A. castellanii* and (B, C) *D. discoideum* at 2 hpi. Shown are 12 nm slices of cryoFIB-processed lamellae. OM, outer membrane; IM, inner membrane; LCV, LCV membrane; Lcyt, *L. pneumophila* cytoplasm; Hcyt, host cell cytoplasm; ER, endoplasmic reticulum; red arrowhead, T4SSs; asterisk, storage granule; scale bars, 100 nm.