

## Supplementary Information

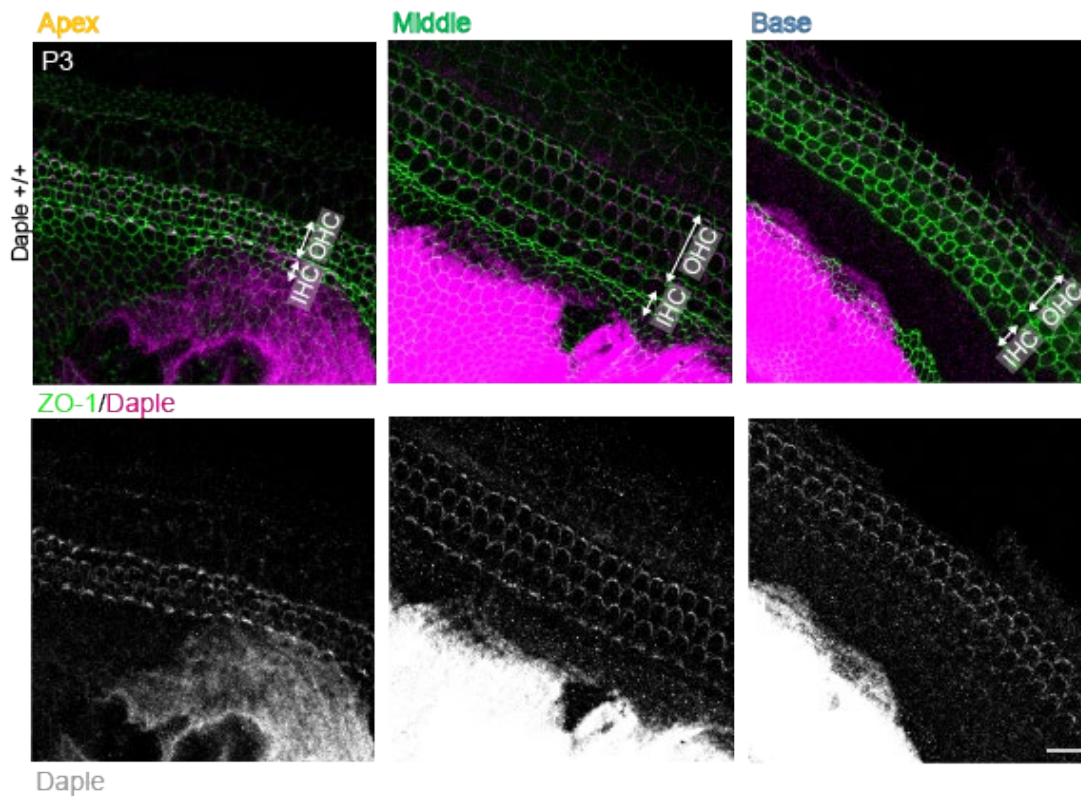
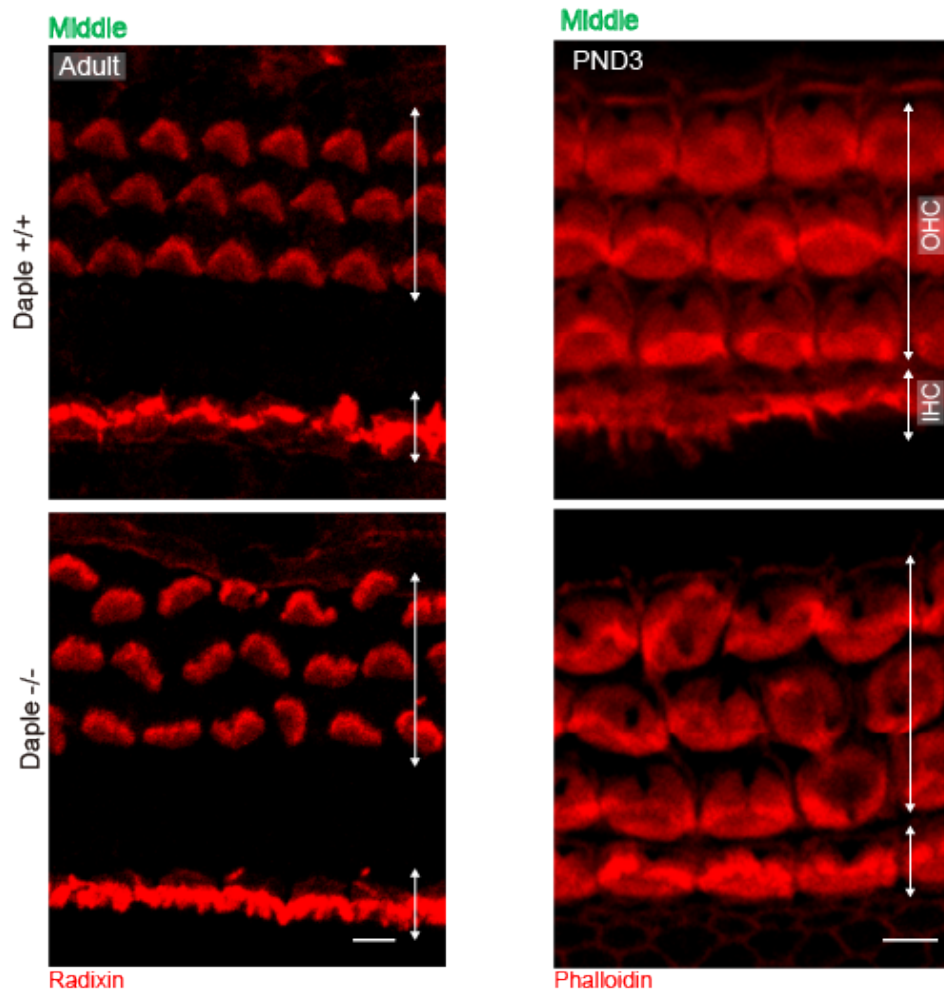


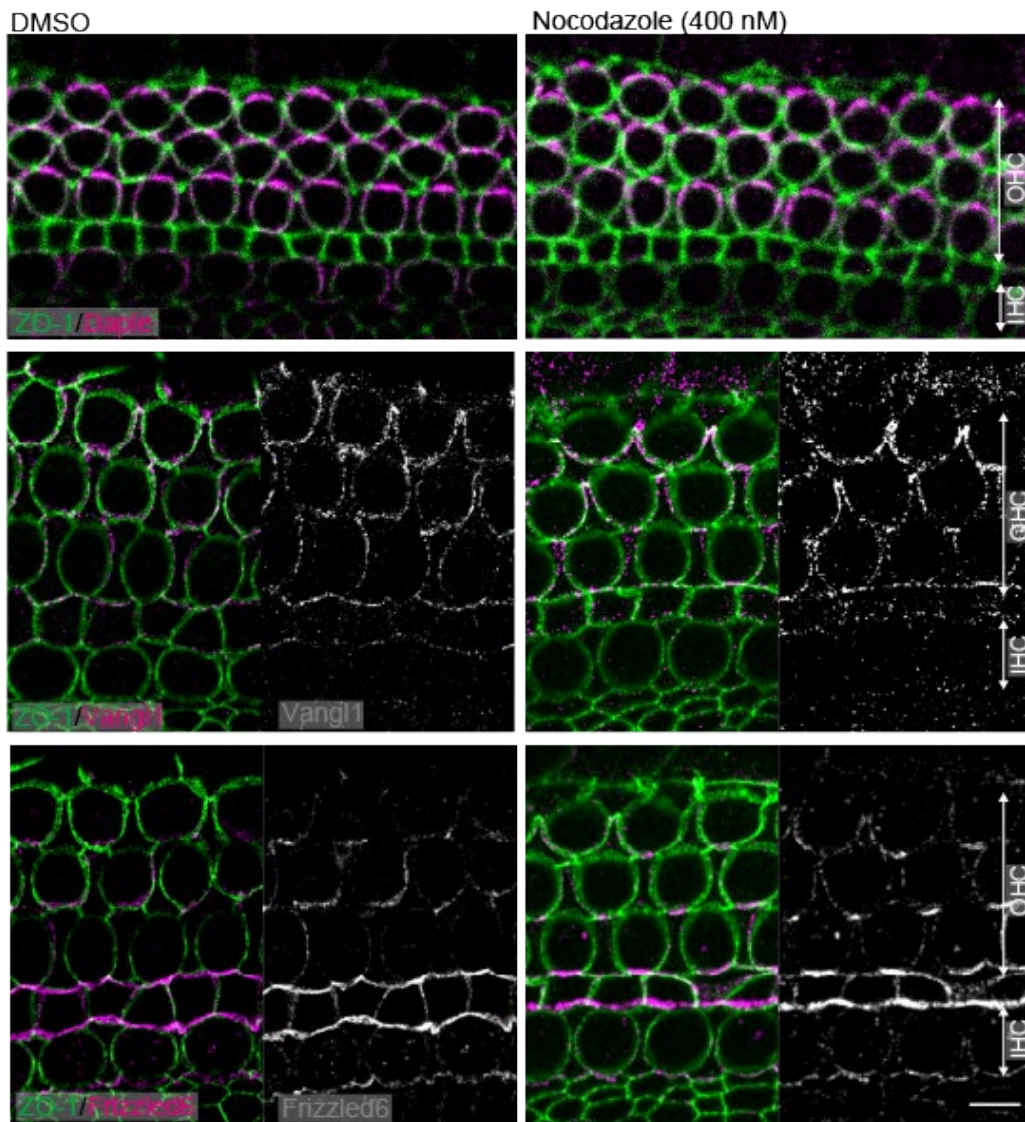
Fig. S1 **Localization** of Daple in cochlea epithelial cells in **P3** mice.

Daple was **localized** in the apex, middle, and basal areas of the organ of Corti (OC). As shown in the images, Daple was expressed on the lateral side of hair cells. Scale bar: 10  $\mu$ m.



**Fig. S2 Distribution and expression of actin and actin related protein.**

Morphological changes in hair bundles in *Daple*<sup>-/-</sup> hair cells (HCs) compared to those in *Daple*<sup>+/+</sup> HCs visualized by staining of radixin at adult and actin at P3 stages. However, the expression levels of actin and actin-related proteins were unchanged in the adult and P3 cochlea. Scale bars: 5 μm.



**Fig.S3** Distribution and expression of core PCP proteins.

The distribution and expression of Vangl1 and Frizzled6, core PCP proteins after nocodazole treatment were similar to those in non-treated cells. Scale bar: 5  $\mu$ m.