

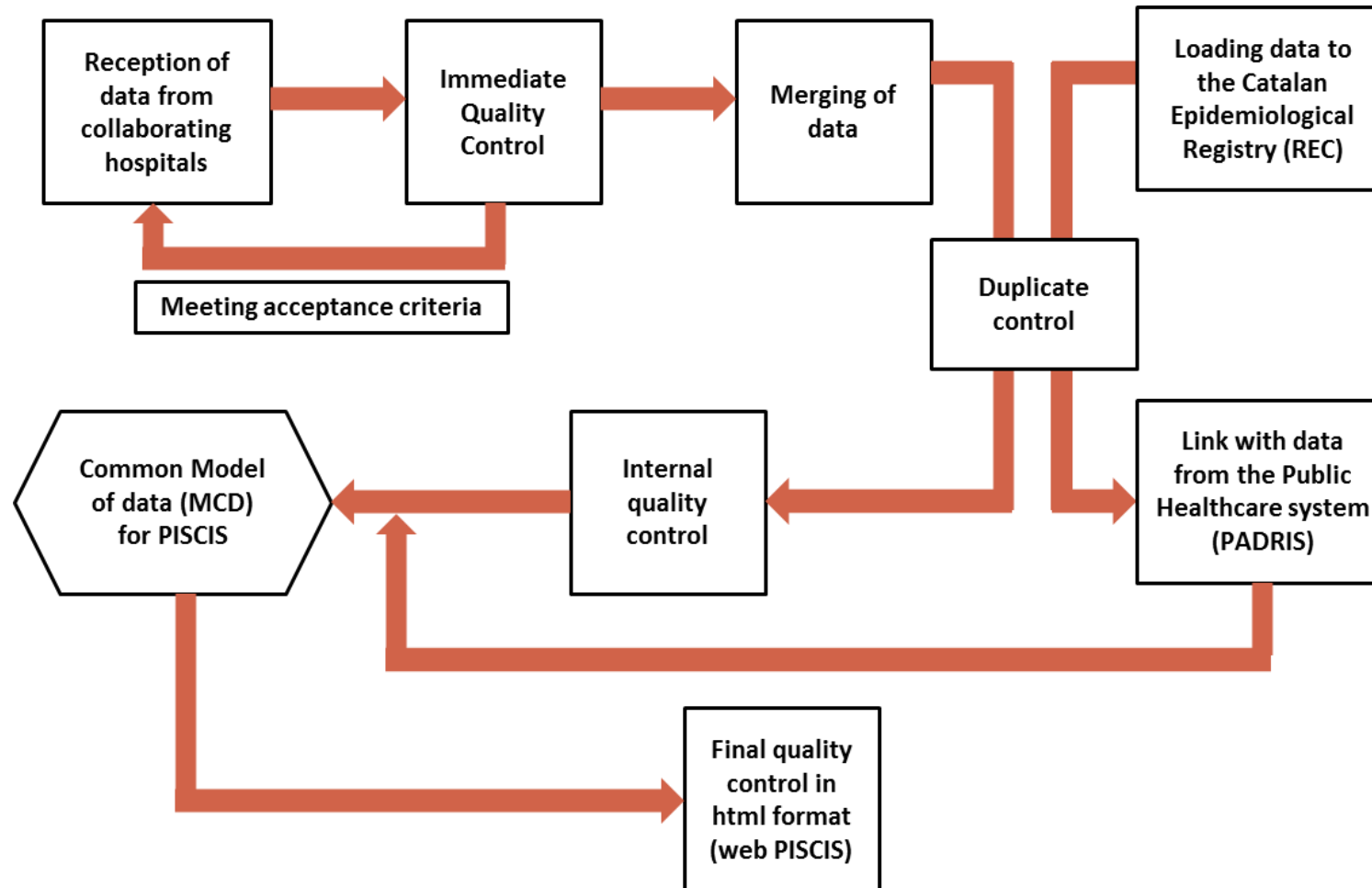
THE LANCET HIV

Supplementary appendix 4

This appendix formed part of the original submission and has been peer reviewed. We post it as supplied by the authors.

Supplement to: Nomah DK, Reyes-Urueña J, Díaz Y, et al. Sociodemographic, clinical, and immunological factors associated with SARS-CoV-2 diagnosis and severe COVID-19 outcomes in people living with HIV: a retrospective cohort study. *Lancet HIV* 2021; published online Oct 13. [http://dx.doi.org/10.1016/S2352-3018\(21\)00240-X](http://dx.doi.org/10.1016/S2352-3018(21)00240-X).

Figure 1: Diagram showing the reception of data from PISCIS cohort collaborating hospitals, data treatments, and linkage with PADRIS



Abbreviation: PADRIS, Public Data Analysis for Health Research and Innovation Program of Catalonia

Table 1: Eleven groups of the most prevalent chronic comorbidities among PLWH in Catalonia with corresponding International Classification of Diseases, Ninth and Tenth Revision, Clinical Modification (ICD-9/10-CM)codes

Disease groups	ICD-10-CM	Description (ICD-10)	ICD-9-CM	Description (ICD-9)	PLWH	SARS-CoV-2 diagnosed	Severe outcomes
AUTOIMMUNE	I731	Thromboangiitis obliterans [Buerger]	443•1	Obliterating thromboangeitis (Buerger's disease)	4	1	1
AUTOIMMUNE	L10	Pemphigus			16	0	0
AUTOIMMUNE	L12	Pemphigoid			5	1	0
AUTOIMMUNE	L40	Psoriasis			392	27	5
AUTOIMMUNE	L41	Parapsoriasis			5	0	0
AUTOIMMUNE	L93	Lupus erythematosus			4	1	0
AUTOIMMUNE	L94	Other localized connective tissue disorders			4	1	0
AUTOIMMUNE	L95	Vasculitis limited to skin, not elsewhere classified			3	0	0
AUTOIMMUNE	M30	Polyarteritis nodosa and related conditions			2	0	0
AUTOIMMUNE	M31	Other necrotizing vasculopathies			11	0	0
AUTOIMMUNE	M32	Systemic lupus erythematosus			15	1	0
AUTOIMMUNE	M33	Dermatopolymyositis			5	0	0
AUTOIMMUNE	M34	Systemic sclerosis			4	3	2
AUTOIMMUNE	M35	Other systemic involvement of connective tissue			41	3	1
AUTOIMMUNE	M36	Systemic disorders of connective tissue in diseases classified elsewhere			3	0	0
AUTOIMMUNE	M023	Reiter disease			11	0	0
AUTOIMMUNE	M05	Seropositive rheumatoid arthritis			16	4	0
AUTOIMMUNE	M06	Other rheumatoid arthritis			38	5	0
AUTOIMMUNE	M07	Psoriatic and enteropathic arthropathies			2	0	0

AUTOIMMUNE	M08	Juvenile arthritis			1	1	0
AUTOIMMUNE	M09	Juvenile arthritis in diseases classified elsewhere			0	0	0
AUTOIMMUNE	M10	Gout			152	9	3
AUTOIMMUNE	M11	Other crystal arthropathies			24	2	0
AUTOIMMUNE	M12	Other specific arthropathies			223	8	3
AUTOIMMUNE	M13	Other arthritis			288	20	7
AUTOIMMUNE	M14	Arthropathies in other diseases classified elsewhere			7	0	0
AUTOIMMUNE	M45	Ankylosing spondylitis			13	2	0
AUTOIMMUNE	M460	Spinal enthesopathy			2	0	0
AUTOIMMUNE	M461	Sacroiliitis, not elsewhere classified	720•2	Sacroiliitis, not elsewhere classified	42	0	0
AUTOIMMUNE	M468	Other specified inflammatory spondylopathies			3	0	0
AUTOIMMUNE	M469	Inflammatory spondylopathy, unspecified			10	2	0
AUTOIMMUNE	K50	Crohn disease [regional enteritis]			101	6	1
AUTOIMMUNE	K51	Ulcerative colitis			126	9	1
AUTOIMMUNE	G35	Multiple sclerosis	340	Multiple sclerosis	8	0	0
CANCER	C81	Hodgkin lymphoma			82	2	0
CANCER	C82	Follicular lymphoma			9	0	0
CANCER	C83	Non-follicular lymphoma			45	1	0
CANCER	C84	Mature T/NK-cell lymphomas			10	0	0
CANCER	C85	Other and unspecified types of non-Hodgkin lymphoma			78	4	1
CANCER	C86	Other specified types of T/NK-cell lymphoma			4	0	0
CANCER	C88	Malignant immunoproliferative diseases			11	2	2
CANCER	C90	Multiple myeloma and malignant			4	1	0

		plasma cell neoplasms					
CANCER	C91	Lymphoid leukaemia			9	0	0
CANCER	C92	Myeloid leukaemia			2	0	0
CANCER	C93	Monocytic leukaemia			0	0	0
CANCER	C94	Other leukaemias of specified cell type			1	0	0
CANCER	C95	Leukaemia of unspecified cell type			7	0	0
CANCER	C96	Other and unspecified malignant neoplasms of lymphoid, haematopoietic and related tissue			55	1	0
CANCER	C	Malignant neoplasms			1080	57	13
CANCER	D00	Carcinoma in situ of oral cavity, oesophagus and stomach			3	0	0
CANCER	D01	Carcinoma in situ of other and unspecified digestive organs			22	0	0
CANCER	D02	Carcinoma in situ of middle ear and respiratory system			2	0	0
CANCER	D03	Melanoma in situ			6	1	0
CANCER	D04	Carcinoma in situ of skin			15	0	0
CANCER	D05	Carcinoma in situ of breast			2	1	0
CANCER	D06	Carcinoma in situ of cervix uteri			76	4	1
CANCER	D07	Carcinoma in situ of other and unspecified genital organs			18	1	0
CANCER	D09	Carcinoma in situ of other and unspecified sites			28	4	0
CANCER	D320	Benign neoplasm: Cerebral meninges	225•2	Benign neoplasm of cerebral meninges	15	2	2
CANCER	D321	Benign neoplasm: Spinal meninges	225•4	Benign neoplasm of spinal meninges	1	0	0
CANCER	D329	Benign neoplasm: Meninges, unspecified			13	2	2
CANCER	D330	Benign neoplasm: Brain, supratentorial	225•0	Benign neoplasm of brain and other parts of nervous system	5	0	0

CANCER	D331	Benign neoplasm: Brain, infratentorial			0	0	0
CANCER	D332	Benign neoplasm: Brain, unspecified			6	0	0
CANCER	D333	Benign neoplasm: Cranial nerves	225•1	Benign neoplasm of cranial nerves convert	3	0	0
CANCER	D334	Benign neoplasm: Spinal cord	225•3	Benign neoplasm of spinal cord	2	0	0
CANCER	Q85	Phakomatoses, not elsewhere classified			5	1	0
CANCER	C81	Hodgkin lymphoma			82	2	0
CANCER	C82	Follicular lymphoma			9	0	0
CANCER	C83	Non-follicular lymphoma			45	1	0
CANCER	C84	Mature T/NK-cell lymphomas			10	0	0
CANCER	C85	Other and unspecified types of non-Hodgkin lymphoma			78	4	1
CANCER	C86	Other specified types of T/NK-cell lymphoma			4	0	0
CANCER	C88	Malignant immunoproliferative diseases			11	2	2
CANCER	C90	Multiple myeloma and malignant plasma cell neoplasms			4	1	0
CANCER	C91	Lymphoid leukaemia			9	0	0
CANCER	C92	Myeloid leukaemia			2	0	0
CANCER	C93	Monocytic leukaemia			0	0	0
CANCER	C94	Other leukaemias of specified cell type			1	0	0
CANCER	C95	Leukaemia of unspecified cell type			7	0	0
CANCER	C96	Other and unspecified malignant neoplasms of lymphoid, haematopoietic and related tissue			55	1	0
CARDIOVASCULAR	I48	Atrial fibrillation and flutter			174	10	6
CARDIOVASCULAR	I441	Atrioventricular block, second degree	426•12	Mobitz (type) II atrioventricular block	10	2	1
CARDIOVASCULAR	I441	Atrioventricular block, second	426•13	Other second degree atrioventricular block	13	3	1

		degree					
CARDIOVASCULAR	I442	Atrioventricular block, complete	426•0	Atrioventricular block, complete	19	0	0
CARDIOVASCULAR	I443	Other and unspecified atrioventricular block			24	1	0
CARDIOVASCULAR	I453	Trifascicular block	426•54	Trifascicular block	2	0	0
CARDIOVASCULAR	I455	Other specified heart block	426•6	Other heart block	2	0	0
CARDIOVASCULAR	Z950	Presence of cardiac pacemaker	V45•01	Status cardiac pacemaker	24	2	1
CARDIOVASCULAR	I05	Rheumatic mitral valve diseases			17	3	0
CARDIOVASCULAR	I06	Rheumatic aortic valve diseases			2	0	0
CARDIOVASCULAR	I07	Rheumatic tricuspid valve diseases			18	3	1
CARDIOVASCULAR	I08	Multiple valve diseases			20	2	0
CARDIOVASCULAR	I091	Rheumatic diseases of endocardium, valve unspecified	397•9	Rheumatic diseases of endocardium, valve unspecified•	1	0	0
CARDIOVASCULAR	I098	Other specified rheumatic heart diseases			0	0	0
CARDIOVASCULAR	I34	Nonrheumatic mitral valve disorders			90	1	0
CARDIOVASCULAR	I35	Nonrheumatic aortic valve disorders			71	3	0
CARDIOVASCULAR	I36	Nonrheumatic tricuspid valve disorders			36	3	0
CARDIOVASCULAR	I37	Pulmonary valve disorders			2	0	0
CARDIOVASCULAR	I38	Endocarditis, valve unspecified	424•90	Endocarditis, valve unspecified, unspecified cause•	9	4	0
CARDIOVASCULAR	I38	Endocarditis, valve unspecified	424•99	Endocarditis, valve unspecified•	4	3	0
CARDIOVASCULAR	I390	Mitral valve disorders in diseases classified elsewhere			0	0	0
CARDIOVASCULAR	I391	Aortic valve disorders in diseases classified elsewhere			0	0	0
CARDIOVASCULAR	I392	Tricuspid valve disorders in diseases classified elsewhere			0	0	0
CARDIOVASCULAR	I393	Pulmonary valve disorders in			0	0	0

		diseases classified elsewhere					
CARDIOVASCULAR	I394	Multiple valve disorders in diseases classified elsewhere			0	0	0
CARDIOVASCULAR	Q22	Congenital malformations of pulmonary and tricuspid valves			0	0	0
CARDIOVASCULAR	Q23	Congenital malformations of aortic and mitral valves			3	0	0
CARDIOVASCULAR	Z952	Presence of prosthetic heart valve	V43•3	Heart valve replaced by other means	31	3	0
CARDIOVASCULAR	Z953	Presence of xenogenic heart valve	V42•2	Heart valve replaced by transplant	15	2	0
CARDIOVASCULAR	Z954	Presence of other heart-valve replacement	V42•2		19	2	0
CARDIOVASCULAR	G45	Transient cerebral ischaemic attacks and related syndromes			71	10	2
CARDIOVASCULAR	G46	Vascular syndromes of brain in cerebrovascular diseases			10	1	1
CARDIOVASCULAR	I60	Subarachnoid haemorrhage			18	2	1
CARDIOVASCULAR	I61	Intracerebral haemorrhage			57	3	1
CARDIOVASCULAR	I62	Other nontraumatic intracranial haemorrhage			14	1	0
CARDIOVASCULAR	I63	Cerebral infarction			207	10	5
CARDIOVASCULAR	I64	Stroke, not specified as haemorrhage or infarction			7	0	0
CARDIOVASCULAR	I67	Other cerebrovascular diseases			57	4	2
CARDIOVASCULAR	I69	Sequelae of cerebrovascular disease			46	6	3
CARDIOVASCULAR	I110	Hypertensive heart disease with (congestive) heart failure	402•01	Malignant hypertensive heart disease with heart failure	15	0	0
CARDIOVASCULAR	I110	Hypertensive heart disease with (congestive) heart failure	402•11	Malignant hypertensive heart disease with heart failure	16	1	0
CARDIOVASCULAR	I110	Hypertensive heart disease with (congestive) heart failure	402•91	Unspecified hypertensive heart disease	19	2	0
CARDIOVASCULAR	I130	Hypertensive heart and renal	404•01	Hypertensive heart and renal disease, with congestive	14	1	0

		disease with (congestive) heart failure		heart failure, malignant			
CARDIOVASCULAR	I130	Hypertensive heart and renal disease with (congestive) heart failure	404•11	Hypertensive heart and chronic kidney disease with heart failure and stage 1 through stage 4 chronic kidney disease•	13	1	0
CARDIOVASCULAR	I130	Hypertensive heart and renal disease with (congestive) heart failure	404•91	Hypertensive heart and chronic kidney disease with heart failure and stage 1 through stage 4 chronic kidney disease	13	1	0
CARDIOVASCULAR	I132	Hypertensive heart and renal disease with both (congestive) heart failure and renal failure	404•03	Hypertensive HF and CKD- Kidney Failure	93	5	0
CARDIOVASCULAR	I132	Hypertensive heart and renal disease with both (congestive) heart failure and renal failure	404•13	Hypertensive heart and chronic kidney disease with heart failure and with stage 5 chronic kidney disease	93	5	0
CARDIOVASCULAR	I132	Hypertensive heart and renal disease with both (congestive) heart failure and renal failure	404•93	Unspecified w/chf and renal failure	93	5	0
CARDIOVASCULAR	I27	Other pulmonary heart diseases			59	4	3
CARDIOVASCULAR	I280	Arteriovenous fistula of pulmonary vessels	417•0	Arteriovenous fistula of pulmonary vessels	1	0	0
CARDIOVASCULAR	I42	Cardiomyopathy			88	4	1
CARDIOVASCULAR	I43	Cardiomyopathy in diseases classified elsewhere	425•8	Cardiomyopathy in other diseases classified elsewhere	8	1	1
CARDIOVASCULAR	I50	Heart failure			164	11	5
CARDIOVASCULAR	I515	Myocardial degeneration	429•1	Myocardial degeneration	0	0	0
CARDIOVASCULAR	I517	Cardiomegaly	429•3	Cardiomegaly	55	3	0
CARDIOVASCULAR	I528	Other heart disorders in other diseases classified elsewhere			0	0	0
CARDIOVASCULAR	Z941	Heart transplant status	V42•1	Heart transplant status	2	0	0
CARDIOVASCULAR	Z943	Heart and lungs transplant status	V42•1		2	0	0
CARDIOVASCULAR	Z943	Heart and lungs transplant status	V42•6	Lung transplant status	0	0	0
CARDIOVASCULAR	I20	Angina pectoris			109	2	0
CARDIOVASCULAR	I21	Acute myocardial infarction			244	7	3

CARDIOVASCULAR	I22	Subsequent myocardial infarction			11	0	0
CARDIOVASCULAR	I24	Other acute ischaemic heart diseases			11	0	0
CARDIOVASCULAR	I25	Chronic ischaemic heart disease			276	12	5
CARDIOVASCULAR	Z951	Presence of aortocoronary bypass graft	V45•81	Aortocoronary bypass status	19	1	0
CARDIOVASCULAR	Z955	Presence of coronary angioplasty implant and graft	V45•82	Ercutaneous transluminal coronary angioplasty status	118	5	1
CARDIOVASCULAR	I09	Other rheumatic heart diseases			0	0	0
CARDIOVASCULAR	I281	Aneurysm of pulmonary artery	417•1	Aneurysm of pulmonary artery	1	0	0
CARDIOVASCULAR	I310	Chronic adhesive pericarditis	423•1	Adhesive pericarditis	1	0	0
CARDIOVASCULAR	I311	Chronic constrictive pericarditis	423•2	Constrictive pericarditis•	3	0	0
CARDIOVASCULAR	I456	Pre-excitation syndrome	426•7	Anomalous atrioventricular excitation•	10	0	0
CARDIOVASCULAR	I456	Pre-excitation syndrome	426•81	Lown-Ganong-Levine syndrome•	7	0	0
CARDIOVASCULAR	I495	Sick sinus syndrome	427•81	Sinoatrial node dysfunction	9	1	1
CARDIOVASCULAR	I498	Other specified cardiac arrhythmias	427•89	Other specified cardiac dysrhythmias	99	6	5
CARDIOVASCULAR	I70	Atherosclerosis			122	7	5
CARDIOVASCULAR	I71	Aortic aneurysm and dissection			30	0	0
CARDIOVASCULAR	I72	Other aneurysm and dissection			16	1	0
CARDIOVASCULAR	I790	Aneurysm of aorta in diseases classified elsewhere	441•9	Aortic aneurysm of unspecified site without mention of rupture	6	0	0
CARDIOVASCULAR	I791	Aortitis in diseases classified elsewhere	443•81	Peripheral angiopathy in diseases classified elsewhere	8	0	0
CARDIOVASCULAR	I950	Idiopathic hypotension	458•1	Chronic hypotension	3	1	0
CARDIOVASCULAR	I951	Orthostatic hypotension	458•0	Orthostatic hypotension	34	4	1
CARDIOVASCULAR	I958	Other hypotension			6	0	0
CARDIOVASCULAR	Q20	Congenital malformations of cardiac chambers and connections			1	0	0
CARDIOVASCULAR	Q21	Congenital malformations of			9	1	0

		cardiac septa					
CARDIOVASCULAR	Q24	Other congenital malformations of heart			8	1	0
CARDIOVASCULAR	Q25	Congenital malformations of great arteries			2	0	0
CARDIOVASCULAR	Q26	Congenital malformations of great veins			0	0	0
CARDIOVASCULAR	Q27	Other congenital malformations of peripheral vascular system			2	0	0
CARDIOVASCULAR	Q28	Other congenital malformations of circulatory system			9	0	0
CARDIOVASCULAR	Z958	Presence of other cardiac and vascular implants and grafts			21	0	0
CARDIOVASCULAR	Z959	Presence of cardiac and vascular implant and graft, unspecified	V45•00	Cardiac device in situ	2	0	0
CARDIOVASCULAR	I091	Rheumatic diseases of endocardium, valve unspecified	397•9	Rheumatic diseases of endocardium, valve unspecified	1	0	0
CARDIOVASCULAR	I098	Other specified rheumatic heart diseases			0	0	0
CARDIOVASCULAR	I702	Atherosclerosis of arteries of extremities			63	4	2
CARDIOVASCULAR	I780	Hereditary haemorrhagic telangiectasia	448•0	Hereditary hemorrhagic telangiectasia•	0	0	0
CARDIOVASCULAR	I83	Varicose veins of lower extremities			452	31	7
CARDIOVASCULAR	I87	Other disorders of veins			290	22	8
CARDIOVASCULAR	I89	Other noninfective disorders of lymphatic vessels and lymph nodes			33	1	1
CARDIOVASCULAR	I972	Postmastectomy lymphoedema syndrome	457•0	Postmastectomy lymphedema syndrome	0	0	0
CARDIOVASCULAR	Q820	Hereditary lymphoedema	757•0	Hereditary edema of legs	0	0	0
HYPERTENSION	I10	Essential (primary) hypertension	401•0	Malignant essential hypertension	1885	97	35
HYPERTENSION	I10	Essential (primary) hypertension	401•1	Benign essential hypertension	1890	97	35
HYPERTENSION	I10	Essential (primary) hypertension	401•9	Unspecified essential hypertension	2052	107	38

HYPERTENSION	I11	Hypertensive heart disease			139	7	3
HYPERTENSION	I12	Hypertensive renal disease			153	11	2
HYPERTENSION	I13	Hypertensive heart and renal disease			785	63	7
HYPERTENSION	I15	Secondary hypertension			180	10	2
CHRONIC KIDNEY DISEASES	I120	Hypertensive renal disease with renal failure	403•01	Hypertensive chronic kidney disease, malignant, with chronic kidney disease stage V or end stage renal disease	28	3	1
CHRONIC KIDNEY DISEASES	I120	Hypertensive renal disease with renal failure	403•11	Hypertensive chronic kidney disease, benign, with chronic kidney disease stage v or end stage renal disease	28	3	1
CHRONIC KIDNEY DISEASES	I120	Hypertensive renal disease with renal failure	403•91	Hypertensive chronic kidney disease, unspecified, with chronic kidney disease stage V or end stage renal disease	41	3	1
CHRONIC KIDNEY DISEASES	I130	Hypertensive heart and renal disease with (congestive) heart failure	404•01	Hypertensive heart and renal disease, with congestive heart failure, malignant	14	1	0
CHRONIC KIDNEY DISEASES	I130	Hypertensive heart and renal disease with (congestive) heart failure	404•11	Hypertensive heart and chronic kidney disease with heart failure and stage 1 through stage 4 chronic kidney disease, or unspecified chronic kidney disease	13	1	0
CHRONIC KIDNEY DISEASES	I130	Hypertensive heart and renal disease with (congestive) heart failure	404•91	Hypertensive heart and chronic kidney disease with heart failure and stage 1 through stage 4 chronic kidney disease, or unspecified chronic kidney disease	13	1	0
CHRONIC KIDNEY DISEASES	I131	Hypertensive heart and renal disease with renal failure			693	59	7
CHRONIC KIDNEY DISEASES	I132	Hypertensive heart and renal disease with both (congestive) heart failure and renal failure	404•03	Hypertensive heart and chronic kidney disease with heart failure and stage 1 through stage 4 chronic kidney disease, or unspecified chronic kidney disease	93	5	0
CHRONIC KIDNEY DISEASES	I132	Hypertensive heart and renal disease with both (congestive) heart failure and renal failure	404•13	Hypertensive HF and CKD – Kidney Failure	93	5	0
CHRONIC KIDNEY DISEASES	I132	Hypertensive heart and renal disease with both (congestive) heart failure and renal failure	404•93	Hypertensive HF and CKD – Kidney Failure	93	5	0
CHRONIC KIDNEY	I139	Hypertensive heart and renal			0	0	0

DISEASES		disease, unspecified					
CHRONIC KIDNEY DISEASES	N01	Rapidly progressive nephritic syndrome			0	0	0
CHRONIC KIDNEY DISEASES	N03	Chronic nephritic syndrome			45	4	1
CHRONIC KIDNEY DISEASES	N04	Nephrotic syndrome			14	2	0
CHRONIC KIDNEY DISEASES	N05	Unspecified nephritic syndrome			14	5	3
CHRONIC KIDNEY DISEASES	N07	Hereditary nephropathy, not elsewhere classified			0	0	0
CHRONIC KIDNEY DISEASES	N08	Glomerular disorders in diseases classified elsewhere	583•81	Nephritis and nephropathy, not specified as acute or chronic, in diseases classified elsewhere	24	0	0
CHRONIC KIDNEY DISEASES	N11	Chronic tubulo-interstitial nephritis			9	0	0
CHRONIC KIDNEY DISEASES	N183	Chronic kidney disease, stage 3	585•3	Chronic kidney disease, stage 3 (moderate)	77	4	2
CHRONIC KIDNEY DISEASES	N184	Chronic kidney disease, stage 4	585•4	Chronic kidney disease, Stage IV (severe)	22	3	1
CHRONIC KIDNEY DISEASES	N185	Chronic kidney disease, stage 5	585•5	Chronic kidney disease, stage v	33	3	1
CHRONIC KIDNEY DISEASES	N189	Chronic kidney disease, unspecified	585•9	Chronic kidney disease, unspecified	401	25	7
CHRONIC KIDNEY DISEASES	Q60	Renal agenesis and other reduction defects of kidney			14	0	0
CHRONIC KIDNEY DISEASES	Q611	Polycystic kidney, autosomal recessive			0	0	0
CHRONIC KIDNEY DISEASES	Q612	Polycystic kidney, autosomal dominant	753•13	Polycystic kidney, autosomal dominant	1	0	0
CHRONIC KIDNEY DISEASES	Q613	Polycystic kidney, unspecified	753•12	Polycystic kidney, unspecified type	15	1	0
CHRONIC KIDNEY DISEASES	Q614	Renal dysplasia	753•15	Renal dysplasia	0	0	0
CHRONIC KIDNEY DISEASES	Q615	Medullary cystic kidney	753•16	Medullary cystic kidney	0	0	0

CHRONIC KIDNEY DISEASES	Q615	Medullary cystic kidney	753•17	Medullary sponge kidney	0	0	0
CHRONIC KIDNEY DISEASES	Q618	Other cystic kidney diseases	753•19	Other specified cystic kidney disease	0	0	0
CHRONIC KIDNEY DISEASES	Q619	Cystic kidney disease, unspecified	753•10	Cystic kidney disease, unspecified	3	1	0
CHRONIC KIDNEY DISEASES	Z905	Acquired absence of kidney	V45•73	Acquired absence kidney	26	0	0
CHRONIC KIDNEY DISEASES	Z940	Kidney transplant status	V42•0	Organ or tissue replaced by transplant	34	2	1
CHRONIC LIVER DISEASES	B18	Chronic viral hepatitis			2016	97	29
CHRONIC LIVER DISEASES	K70	Alcoholic liver disease			104	8	5
CHRONIC LIVER DISEASES	K713	Toxic liver disease with chronic persistent hepatitis	573•3	Hepatitis, unspecified	77	2	0
CHRONIC LIVER DISEASES	K714	Toxic liver disease with chronic lobular hepatitis	573•3	Hepatitis, unspecified	77	2	0
CHRONIC LIVER DISEASES	K715	Toxic liver disease with chronic active hepatitis			0	0	0
CHRONIC LIVER DISEASES	K717	Toxic liver disease with fibrosis and cirrhosis of liver	573•3	Hepatitis, unspecified	77	2	0
CHRONIC LIVER DISEASES	K721	Chronic hepatic failure			3	0	0
CHRONIC LIVER DISEASES	K73	Chronic hepatitis, not elsewhere classified			74	8	6
CHRONIC LIVER DISEASES	K74	Fibrosis and cirrhosis of liver			195	9	3
CHRONIC LIVER DISEASES	K753	Granulomatous hepatitis, not elsewhere classified	573•3	Hepatitis, unspecified	78	2	0
CHRONIC LIVER DISEASES	K754	Autoimmune hepatitis	571•42	Chronic persistent hepatitis	10	3	1
CHRONIC LIVER DISEASES	K758	Other specified inflammatory liver diseases			17	1	0
CHRONIC LIVER DISEASES	K761	Chronic passive congestion of liver	573•0	Chronic passive congestion of liver	5	1	0

CHRONIC LIVER DISEASES	K761	Chronic passive congestion of liver	573•8	Other disorders of liver	84	7	3
CHRONIC LIVER DISEASES	K766	Portal hypertension	572•3	Portal hypertension	148	6	2
CHRONIC LIVER DISEASES	K767	Hepatorenal syndrome	572•4	Hepatorenal syndrome	1	0	0
CHRONIC LIVER DISEASES	K778	Liver disorders in other diseases classified elsewhere			0	0	0
CHRONIC LIVER DISEASES	Q446	Cystic disease of liver	751•62	Congenital cystic disease of liver	4	0	0
CHRONIC LIVER DISEASES	Z944	Liver transplant status	V42•7	Liver transplant status	27	2	0
CHRONIC LIVER DISEASES	K700	Alcoholic fatty liver	571•0	Alcoholic fatty liver	14	1	0
CHRONIC LIVER DISEASES	K701	Alcoholic hepatitis			29	2	1
METABOLIC	E78	Disorders of lipoprotein metabolism and other lipidaemias			2419	119	40
METABOLIC	E20	Hypoparathyroidism			2	0	0
METABOLIC	E21	Hyperparathyroidism and other disorders of parathyroid gland			45	3	3
METABOLIC	E22	Hyperfunction of pituitary gland			37	3	0
METABOLIC	E23	Hypofunction and other disorders of pituitary gland			22	1	0
METABOLIC	E24	Cushing syndrome			6	1	0
METABOLIC	E25	Adrenogenital disorders			3	0	0
METABOLIC	E26	Hyperaldosteronism			1	0	0
METABOLIC	E27	Other disorders of adrenal gland			20	0	0
METABOLIC	E28	Ovarian dysfunction			33	3	2
METABOLIC	E29	Testicular dysfunction			44	4	0
METABOLIC	E31	Polyglandular dysfunction			0	0	0

METABOLIC	E34	Other endocrine disorders			7	0	0
METABOLIC	E35	Disorders of endocrine glands in diseases classified elsewhere	246•8	Other specified disorders of thyroid	2	0	0
METABOLIC	E35	Disorders of endocrine glands in diseases classified elsewhere	255•8	Other specified disorders of adrenal glands	3	0	0
METABOLIC	E35	Disorders of endocrine glands in diseases classified elsewhere	259•8	Other specified endocrine disorders	0	0	0
METABOLIC	E40	Kwashiorkor	260	Kwashiorkor	8	0	0
METABOLIC	E41	Nutritional marasmus	261	Nutritional marasmus	18	2	1
METABOLIC	E42	Marasmic kwashiorkor	260	Kwashiorkor	5	0	0
METABOLIC	E43	Unspecified severe protein-energy malnutrition	262	Other severe protein-calorie malnutrition	32	3	1
METABOLIC	E44	Protein-energy malnutrition of moderate and mild degree			15	4	2
METABOLIC	E45	Retarded development following protein-energy malnutrition	263•2	Arrested development following protein-calorie malnutrition	1	0	0
METABOLIC	E46	Unspecified protein-energy malnutrition	263•8	Unspecified protein-calorie malnutrition	77	8	7
METABOLIC	E46	Unspecified protein-energy malnutrition	263•9	Unspecified protein-calorie malnutrition	124	11	9
METABOLIC	E64	Sequelae of malnutrition and other nutritional deficiencies			1	0	0
METABOLIC	E70	Disorders of aromatic amino-acid metabolism			1	0	0
METABOLIC	E71	Disorders of branched-chain amino-acid metabolism and fatty-acid metabolism			1	0	0
METABOLIC	E72	Other disorders of amino-acid metabolism			6	0	0
METABOLIC	E74	Other disorders of carbohydrate metabolism			5	1	0
METABOLIC	E75	Disorders of sphingolipid metabolism and other lipid storage disorders			1	1	1
METABOLIC	E76	Disorders of glycosaminoglycan metabolism			0	0	0
METABOLIC	E77	Disorders of glycoprotein			4	2	2

		metabolism					
METABOLIC	E79	Disorders of purine and pyrimidine metabolism			156	11	3
METABOLIC	E80	Disorders of porphyrin and bilirubin metabolism			49	5	0
METABOLIC	E83	Disorders of mineral metabolism			64	6	4
METABOLIC	E84	Cystic fibrosis			39	2	0
METABOLIC	E85	Amyloidosis			6	1	0
METABOLIC	E88	Other metabolic disorders			221	9	2
METABOLIC	E89	Postprocedural endocrine and metabolic disorders, not elsewhere classified			31	4	0
METABOLIC	E891	Postprocedural hypoinsulinaemia	251•3	Postsurgical hypoinsulinemia	0	0	0
METABOLIC	K903	Pancreatic steatorrhoea	579•4	Pancreatic steatorrhea	1	0	0
METABOLIC	K904	Malabsorption due to intolerance, not elsewhere classified			22	1	0
METABOLIC	K908	Other intestinal malabsorption			3	0	0
METABOLIC	K909	Intestinal malabsorption, unspecified	579•9	Unspecified intestinal malabsorption	7	0	0
METABOLIC	K912	Postsurgical malabsorption, not elsewhere classified	579•3	Postsurgical malabsorption, not elsewhere classified	3	0	0
METABOLIC	M83	Adult osteomalacia			12	2	0
METABOLIC	M88	Paget disease of bone [osteitis deformans]			1	0	0
METABOLIC	N25	Disorders resulting from impaired renal tubular function			7	1	1
DIABETES	E10	Insulin-dependent diabetes mellitus	250•XX	Diabetes	71	5	1
DIABETES	E11	Non-insulin-dependent diabetes mellitus			715	32	11
DIABETES	E13	Other specified diabetes mellitus			44	2	1
DIABETES	E14	Unspecified diabetes mellitus			0	0	0

OBERSITY	E66	Obesity			1114	72	19
NEUROPSYCHIATRIC	F00	Dementia in Alzheimer disease			0	0	0
NEUROPSYCHIATRIC	F01	Vascular dementia			6	1	0
NEUROPSYCHIATRIC	F02	Dementia in other diseases classified elsewhere			25	7	2
NEUROPSYCHIATRIC	F03	Unspecified dementia			39	6	3
NEUROPSYCHIATRIC	F051	Delirium superimposed on dementia			0	0	0
NEUROPSYCHIATRIC	G30	Alzheimer disease			15	1	1
NEUROPSYCHIATRIC	G31	Other degenerative diseases of nervous system, not elsewhere classified			110	13	6
NEUROPSYCHIATRIC	F30	Manic episode			37	0	0
NEUROPSYCHIATRIC	F31	Bipolar affective disorder			139	3	1
NEUROPSYCHIATRIC	F32	Depressive episode			1802	89	24
NEUROPSYCHIATRIC	F33	Recurrent depressive disorder			112	3	0
NEUROPSYCHIATRIC	F34	Persistent mood [affective] disorders			234	12	5
NEUROPSYCHIATRIC	F38	Other mood [affective] disorders			0	0	0
NEUROPSYCHIATRIC	F39	Unspecified mood [affective] disorder	296•90	Unspecified episodic mood disorder	904	40	11
NEUROPSYCHIATRIC	F412	Mixed anxiety and depressive disorder			0	0	0
NEUROPSYCHIATRIC	G40	Epilepsy			277	16	7
NEUROPSYCHIATRIC	B900	Sequelae of central nervous system tuberculosis	137•1	Late effects of central nervous system tuberculosis	1	1	0
NEUROPSYCHIATRIC	D482	Neoplasm of uncertain or unknown behaviour: Peripheral nerves and autonomic nervous system	238•1	Neoplasm of uncertain behavior of connective and other soft tissue	0	0	0
NEUROPSYCHIATRIC	G041	Tropical spastic paraplegia	344•1	Paraplegia	14	2	1
NEUROPSYCHIATRIC	G09	Sequelae of inflammatory diseases of central nervous	326	Late effects of intracranial abscess or pyogenic infection	8	4	2

		system					
NEUROPSYCHIATRIC	G10	Huntington disease	333•4	Huntington's chorea	2	0	0
NEUROPSYCHIATRIC	G11	Hereditary ataxia			2	0	0
NEUROPSYCHIATRIC	G12	Spinal muscular atrophy and related syndromes			7	1	1
NEUROPSYCHIATRIC	G13	Systemic atrophies primarily affecting central nervous system in diseases classified elsewhere			1	0	0
NEUROPSYCHIATRIC	G24	Dystonia			16	1	1
NEUROPSYCHIATRIC	G25	Other extrapyramidal and movement disorders			86	4	2
NEUROPSYCHIATRIC	G26	Extrapyramidal and movement disorders in diseases classified elsewhere	333•99	Other extrapyramidal diseases and abnormal movement disorders	26	0	0
NEUROPSYCHIATRIC	G32	Other degenerative disorders of nervous system in diseases classified elsewhere			0	0	0
NEUROPSYCHIATRIC	G37	Other demyelinating diseases of central nervous system			6	0	0
NEUROPSYCHIATRIC	G51	Facial nerve disorders			187	7	1
NEUROPSYCHIATRIC	G52	Disorders of other cranial nerves			0	0	0
NEUROPSYCHIATRIC	G53	Cranial nerve disorders in diseases classified elsewhere	352•9	Unspecified disorder of cranial nerves	21	2	0
NEUROPSYCHIATRIC	G70	Myasthenia gravis and other myoneural disorders			9	0	0
NEUROPSYCHIATRIC	G71	Primary disorders of muscles			8	0	0
NEUROPSYCHIATRIC	G723	Periodic paralysis	359•3	Periodic paralysis	0	0	0
NEUROPSYCHIATRIC	G724	Inflammatory myopathy, not elsewhere classified			0	0	0
NEUROPSYCHIATRIC	G728	Other specified myopathies			9	1	0
NEUROPSYCHIATRIC	G729	Myopathy, unspecified	359•9	Myopathy, unspecified	34	3	0
NEUROPSYCHIATRIC	G73	Disorders of myoneural junction and muscle in diseases classified elsewhere			3	0	0
NEUROPSYCHIATRIC	G80	Cerebral palsy			1	0	0
NEUROPSYCHIATRIC	G81	Hemiplegia			80	7	3
NEUROPSYCHIATRIC	G82	Paraplegia and tetraplegia			26	4	2

NEUROPSYCHIATRIC	G83	Other paralytic syndromes			23	3	2
NEUROPSYCHIATRIC	G90	Disorders of autonomic nervous system			11	1	0
NEUROPSYCHIATRIC	G91	Hydrocephalus			13	1	1
NEUROPSYCHIATRIC	G938	Other specified disorders of brain			11	1	1
NEUROPSYCHIATRIC	G939	Disorder of brain, unspecified	348•9	Unspecified condition of brain	3	0	0
NEUROPSYCHIATRIC	G95	Other diseases of spinal cord			7	0	0
NEUROPSYCHIATRIC	G99	Other disorders of nervous system in diseases classified elsewhere			7	0	0
NEUROPSYCHIATRIC	M471	Other spondylosis with myelopathy			18	1	0
NEUROPSYCHIATRIC	Q00	Anencephaly and similar malformations			0	0	0
NEUROPSYCHIATRIC	Q01	Encephalocele			1	0	0
NEUROPSYCHIATRIC	Q02	Microcephaly	742•1	Microcephalus	0	0	0
NEUROPSYCHIATRIC	Q03	Congenital hydrocephalus			1	0	0
NEUROPSYCHIATRIC	Q04	Other congenital malformations of brain			2	0	0
NEUROPSYCHIATRIC	Q05	Spina bifida			8	0	0
NEUROPSYCHIATRIC	Q06	Other congenital malformations of spinal cord			0	0	0
NEUROPSYCHIATRIC	Q07	Other congenital malformations of nervous system			4	0	0
NEUROPSYCHIATRIC	Q760	Spina bifida occulta	756•17	Spina bifida occulta	1	0	0
NEUROPSYCHIATRIC	F04	Organic amnesic syndrome, not induced by alcohol and other psychoactive substances	294•0	Amnesic disorder in conditions classified elsewhere	4	0	0
NEUROPSYCHIATRIC	F06	Other mental disorders due to brain damage and dysfunction and to physical disease			44	3	1
NEUROPSYCHIATRIC	F07	Personality and behavioural disorders due to brain disease, damage and dysfunction			18	0	0
NEUROPSYCHIATRIC	F09	Unspecified organic or symptomatic mental disorder	310•9	Unspecified nonpsychotic mental disorder following organic brain damage	30	4	3
NEUROPSYCHIATRIC	F102	Mental and behavioural disorders due to use of alcohol: Dependence syndrome			547	34	16

NEUROPSYCHIATRIC	F106	Mental and behavioural disorders due to use of alcohol: Amnesic syndrome	0	0	0
NEUROPSYCHIATRIC	F107	Mental and behavioural disorders due to use of alcohol: Residual and late-onset psychotic disorder	0	0	0
NEUROPSYCHIATRIC	F112	Mental and behavioural disorders due to use of opioids: Dependence syndrome	560	28	15
NEUROPSYCHIATRIC	F116	Mental and behavioural disorders due to use of opioids: Amnesic syndrome	0	0	0
NEUROPSYCHIATRIC	F117	Mental and behavioural disorders due to use of opioids: Residual and late-onset psychotic disorder	0	0	0
NEUROPSYCHIATRIC	F122	Mental and behavioural disorders due to use of cannabinoids: Dependence syndrome	185	9	4
NEUROPSYCHIATRIC	F126	Mental and behavioural disorders due to use of cannabinoids: Amnesic syndrome	0	0	0
NEUROPSYCHIATRIC	F127	Mental and behavioural disorders due to use of cannabinoids: Residual and late-onset psychotic disorder	0	0	0
NEUROPSYCHIATRIC	F132	Mental and behavioural disorders due to use of sedatives or hypnotics: Dependence syndrome	110	7	3
NEUROPSYCHIATRIC	F136	Mental and behavioural disorders due to use of sedatives or hypnotics: Amnesic syndrome	0	0	0
NEUROPSYCHIATRIC	F137	Mental and behavioural disorders due to use of sedatives or hypnotics: Residual and late-onset psychotic disorder	0	0	0
NEUROPSYCHIATRIC	F142	Mental and behavioural disorders due to use of cocaine: Dependence syndrome	643	38	13
NEUROPSYCHIATRIC	F146	Mental and behavioural disorders due to use of cocaine: Amnesic syndrome	0	0	0
NEUROPSYCHIATRIC	F147	Mental and behavioural disorders due to use of cocaine: Residual and late-onset psychotic disorder	0	0	0
NEUROPSYCHIATRIC	F152	Mental and behavioural disorders due to use of other stimulants, including caffeine: Dependence syndrome	96	6	3
NEUROPSYCHIATRIC	F156	Mental and behavioural disorders due to use of other stimulants, including caffeine: Amnesic syndrome	0	0	0
NEUROPSYCHIATRIC	F157	Mental and behavioural disorders due to use of other stimulants, including caffeine: Residual and late-onset psychotic disorder	0	0	0
NEUROPSYCHIATRIC	F162	Mental and behavioural disorders due to use of hallucinogens: Dependence syndrome	15	2	2
NEUROPSYCHIATRIC	F166	Mental and behavioural disorders due to use of hallucinogens: Amnesic syndrome	0	0	0
NEUROPSYCHIATRIC	F167	Mental and behavioural disorders due to use of hallucinogens: Residual and late-onset psychotic disorder	0	0	0
NEUROPSYCHIATRIC	F172	Mental and behavioural disorders due to use of tobacco: Dependence syndrome	3713	157	34
NEUROPSYCHIATRIC	F176	Mental and behavioural disorders due to use of tobacco: Amnesic syndrome	0	0	0
NEUROPSYCHIATRIC	F177	Mental and behavioural disorders due to use of tobacco: Residual and late-onset psychotic disorder	0	0	0
NEUROPSYCHIATRIC	F182	Mental and behavioural disorders due to use of volatile solvents: Dependence syndrome	0	0	0

NEUROPSYCHIATRIC	F186	Mental and behavioural disorders due to use of volatile solvents: Amnesic syndrome		0	0	0	
NEUROPSYCHIATRIC	F187	Mental and behavioural disorders due to use of volatile solvents: Residual and late-onset psychotic disorder		0	0	0	
NEUROPSYCHIATRIC	F192	Mental and behavioural disorders due to multiple drug use and use of other psychoactive substances: Dependence syndrome		474	29	9	
NEUROPSYCHIATRIC	F196	Mental and behavioural disorders due to multiple drug use and use of other psychoactive substances: Amnesic syndrome		0	0	0	
NEUROPSYCHIATRIC	F197	Mental and behavioural disorders due to multiple drug use and use of other psychoactive substances: Residual and late-onset psychotic disorder		1	0	0	
NEUROPSYCHIATRIC	F50	Eating disorders		41	1	0	
NEUROPSYCHIATRIC	F52	Sexual dysfunction, not caused by organic disorder or disease		588	37	7	
NEUROPSYCHIATRIC	F60	Specific personality disorders		313	16	6	
NEUROPSYCHIATRIC	F61	Mixed and other personality disorders		0	0	0	
NEUROPSYCHIATRIC	F62	Enduring personality changes, not attributable to brain damage and disease		0	0	0	
NEUROPSYCHIATRIC	F63	Habit and impulse disorders		58	1	0	
NEUROPSYCHIATRIC	F68	Other disorders of adult personality and behaviour		5	0	0	
NEUROPSYCHIATRIC	F70	Mild mental retardation	317	Mild intellectual disabilities	14	2	1
NEUROPSYCHIATRIC	F71	Moderate mental retardation	318•0	Moderate intellectual disabilities	3	0	0
NEUROPSYCHIATRIC	F72	Severe mental retardation	318•1	Severe intellectual disabilities	0	0	0
NEUROPSYCHIATRIC	F73	Profound mental retardation	318•2	Profound intellectual disabilities	0	0	0
NEUROPSYCHIATRIC	F78	Other mental retardation	319	Unspecified intellectual disabilities	16	4	1
NEUROPSYCHIATRIC	F79	Unspecified mental retardation	319	Unspecified intellectual disabilities	26	5	1
NEUROPSYCHIATRIC	F80	Specific developmental disorders of speech and language		7	0	0	
NEUROPSYCHIATRIC	F81	Specific developmental disorders of scholastic skills		2	1	1	
NEUROPSYCHIATRIC	F82	Specific developmental disorder of motor function	315•4	Developmental coordination disorder	1	0	0
NEUROPSYCHIATRIC	F83	Mixed specific developmental		0	0	0	

		disorders					
NEUROPSYCHIATRIC	F84	Pervasive developmental disorders			4	0	0
NEUROPSYCHIATRIC	F88	Other disorders of psychological development	315•8	Other specified delays in development	0	0	0
NEUROPSYCHIATRIC	F89	Unspecified disorder of psychological development	315•9	Unspecified delay in development	1	0	0
NEUROPSYCHIATRIC	F95	Tic disorders			16	1	0
NEUROPSYCHIATRIC	F99	Mental disorder, not otherwise specified	300•9	Unspecified nonpsychotic mental disorder	92	4	2
NEUROPSYCHIATRIC	G20	Parkinson disease	332•0	Paralysis agitans	17	2	1
NEUROPSYCHIATRIC	G21	Secondary parkinsonism			13	2	0
NEUROPSYCHIATRIC	G22	Parkinsonism in diseases classified elsewhere			0	0	0
NEUROPSYCHIATRIC	G23	Other degenerative diseases of basal ganglia			0	0	0
NEUROPSYCHIATRIC	F20	Schizophrenia			167	6	1
NEUROPSYCHIATRIC	F22	Persistent delusional disorders	297•0	Paranoid state, simple	29	0	0
NEUROPSYCHIATRIC	F22	Persistent delusional disorders	297•1	Delusional disorder	43	1	0
NEUROPSYCHIATRIC	F22	Persistent delusional disorders	297•2	Paraphrenia	29	0	0
NEUROPSYCHIATRIC	F24	Induced delusional disorder	297•3	Shared psychotic disorder	6	0	0
NEUROPSYCHIATRIC	F25	Schizoaffective disorders			42	0	0
NEUROPSYCHIATRIC	F28	Other nonorganic psychotic disorders	298•9	Unspecified psychosis	209	9	2
RESPIRATORY	J45	Asthma			696	46	6
RESPIRATORY	J41	Simple and mucopurulent chronic bronchitis			28	0	0
RESPIRATORY	J42	Unspecified chronic bronchitis	491•9	Unspecified chronic bronchitis	231	6	2
RESPIRATORY	J43	Emphysema			160	6	3
RESPIRATORY	J44	Other chronic obstructive pulmonary disease			519	21	12

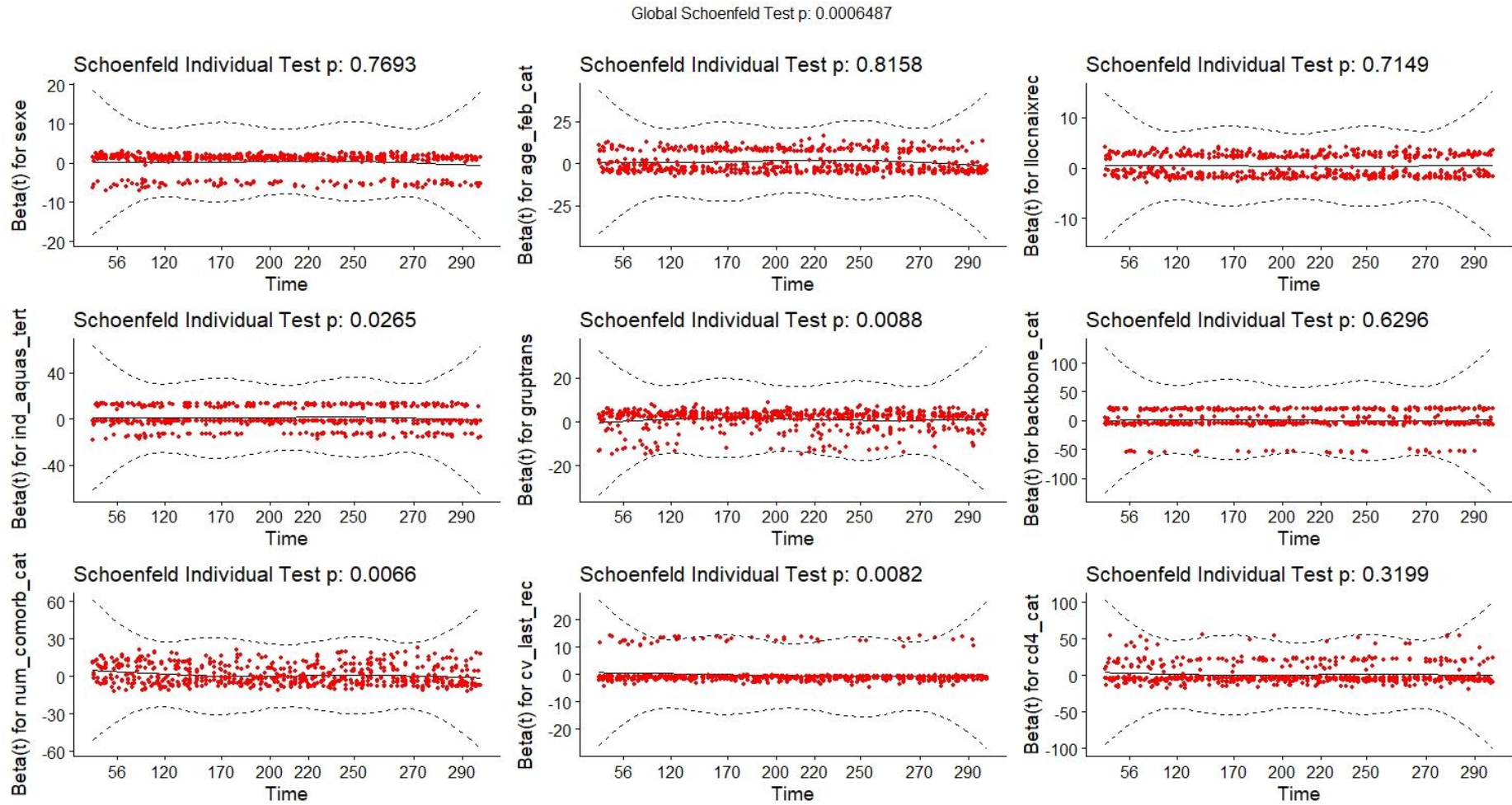
RESPIRATORY	J47	Bronchiectasis			118	8	1
RESPIRATORY	B909	Sequelae of respiratory and unspecified tuberculosis	137•0	Late effects of respiratory or unspecified tuberculosis	38	3	2
RESPIRATORY	E662	Extreme obesity with alveolar hypoventilation	278•03	Obesity hypoventilation syndrome	9	0	0
RESPIRATORY	J60	Coalworker pneumoconiosis	500	Coal workers' pneumoconiosis	3	0	0
RESPIRATORY	J61	Pneumoconiosis due to asbestos and other mineral fibres	501	Asbestosis	0	0	0
RESPIRATORY	J62	Pneumoconiosis due to dust containing silica			1	0	0
RESPIRATORY	J63	Pneumoconiosis due to other inorganic dusts			0	0	0
RESPIRATORY	J64	Unspecified pneumoconiosis	505	Pneumoconiosis, unspecified	2	1	0
RESPIRATORY	J65	Pneumoconiosis associated with tuberculosis	505	Pneumoconiosis, unspecified	2	1	0
RESPIRATORY	J66	Airway disease due to specific organic dust			8	0	0
RESPIRATORY	J67	Hypersensitivity pneumonitis due to organic dust			3	1	0
RESPIRATORY	J684	Chronic respiratory conditions due to chemicals, gases, fumes and vapours	506•4	Chronic respiratory conditions due to fumes and vapors	0	0	0
RESPIRATORY	J701	Chronic and other pulmonary manifestations due to radiation	508•1	Chronic and other pulmonary manifestations due to radiation	1	0	0
RESPIRATORY	J703	Chronic drug-induced interstitial lung disorders	508•8	Respiratory conditions due to other specified external agents	2	0	0
RESPIRATORY	J704	Drug-induced interstitial lung disorders, unspecified	508•8	Respiratory conditions due to other specified external agents	1	0	0
RESPIRATORY	J84	Other interstitial pulmonary diseases			48	6	3
RESPIRATORY	J92	Pleural plaque			2	0	0
RESPIRATORY	J941	Fibrothorax	511•0	Pleurisy without mention of effusion or current tuberculosis	10	1	1
RESPIRATORY	J953	Chronic pulmonary insufficiency	518•52	Other pulmonary insufficiency, not elsewhere	4	0	0

		following surgery		classified, following trauma and surgery			
RESPIRATORY	J955	Postprocedural subglottic stenosis	997•39	Other respiratory complications	6	0	0
RESPIRATORY	J961	Chronic respiratory failure			19	4	4
RESPIRATORY	J98	Other respiratory disorders			503	47	21
RESPIRATORY	Q33	Congenital malformations of lung			1	0	0
RESPIRATORY	Q34	Other congenital malformations of respiratory system			0	0	0
RESPIRATORY	Z902	Acquired absence of lung [part of]	V45•76	Acquired absence of organ, lung	9	1	0
RESPIRATORY	Z942	Lung transplant status	V42•6	Postsurgical states following surgery of eye and adnexa	3	2	2
RESPIRATORY	Z943	Heart and lungs transplant status	V42•1	Postsurgical renal dialysis status	2	0	0
RESPIRATORY	Z943	Heart and lungs transplant status	V42•6	Postsurgical states following surgery of eye and adnexa	0	0	0
RESPIRATORY	Z963	Presence of artificial larynx	V43•81	Larynx replacement	0	0	0

Abbreviations: PLWH, people living with HIV; SARS-CoV-2, Severe acute respiratory syndrome coronavirus 2; Severe outcomes defined as hospitalization or death.

Figure 2: Schoenfeld analysis of Hazard proportionality for Cox models of a) SARS-CoV-2 diagnosis b) severe COVID-19 outcomes

A)



B)

Global Schoenfeld Test p: 0.3637

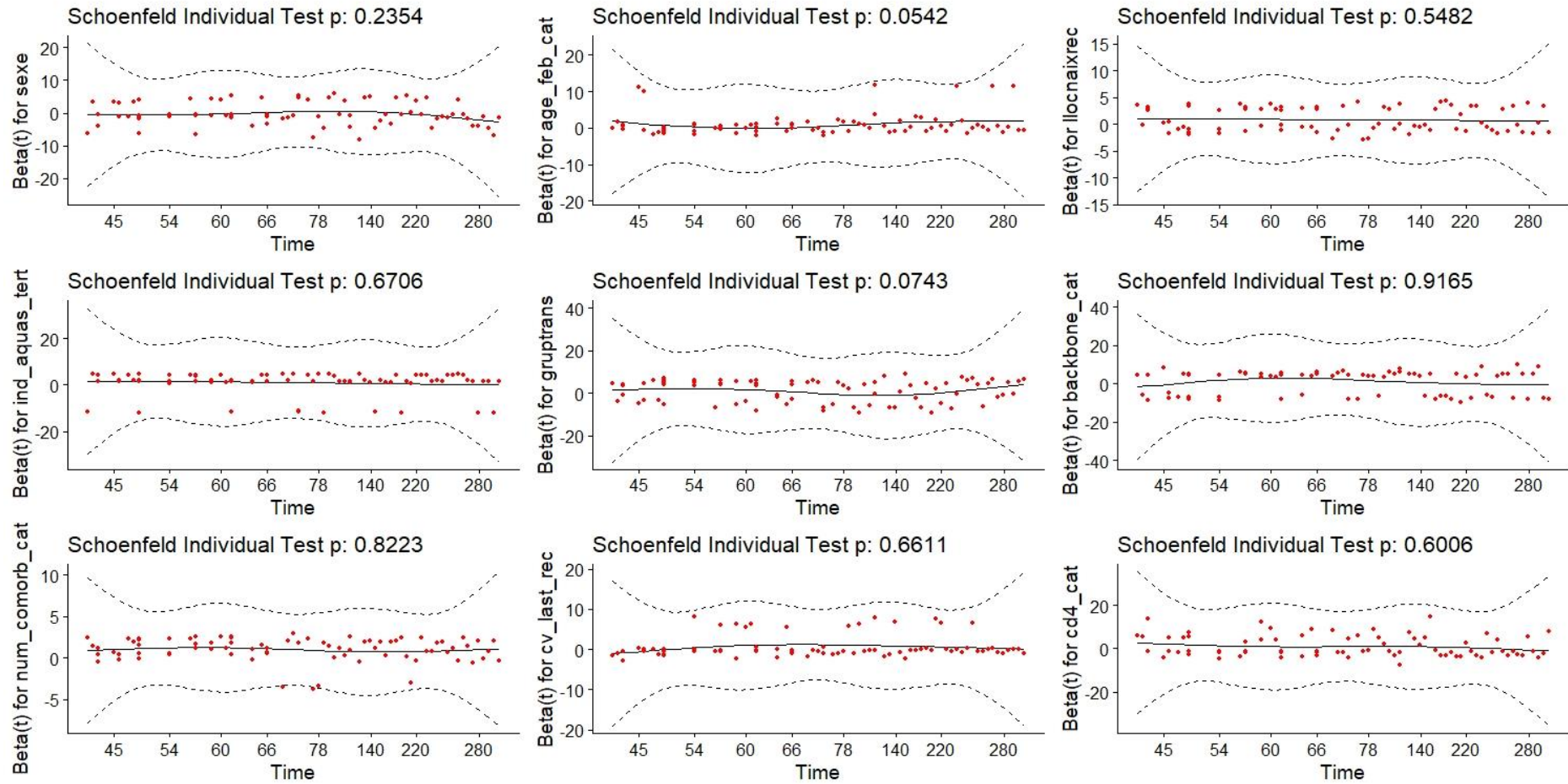


Table 2: Evaluation of correlation of all variables using the hector package (Heterogeneous Correlation Matrix) in R

	Sex	Age	Country of origin	Socioeconomic deprivation	HIV transmission group	CD4 count	HIV-RNA viral load	Backbone_ART	Number of comorbidities
Sex	1	-0,10213	-0,00079	-0,23352	0,38113	-0,06459	-0,05807	-0,03419	-0,17775
Age	-0,10213	1	-0,2998	0,07051	-0,21153	0,15245	-0,14452	0,04666	0,48579
Country of origin	-0,00079	-0,2998	1	-0,08877	0,07306	0,03005	0,1181	-0,01378	-0,29637
Socioeconomic deprivation	-0,23352	0,07051	-0,08877	1	-0,20578	0,06614	0,0115	0,05688	0,15014
HIV transmission group	0,38113	-0,21153	0,07306	-0,20578	1	-0,11807	-0,0168	-0,00329	-0,16369
CD4 count	-0,06459	0,15245	0,03005	0,06614	-0,11807	1	0,24882	0,0021	0,15265
HIV-RNA viral load	-0,05807	-0,14452	0,1181	0,0115	-0,0168	0,24882	1	-0,04419	-0,01422
Backbone_ART	-0,03419	0,04666	-0,01378	0,05688	-0,00329	0,0021	-0,04419	1	0,0641
Number of comorbidities	-0,17775	0,48579	-0,29637	0,15014	-0,16369	0,15265	-0,01422	0,0641	1

Table 3: Evaluation of variance inflation factor (VIF) of all variables using the rms package in R

	SARS-CoV-2 diagnosis		Severe COVID-19 outcomes	
	Unadjusted	Adjusted	Unadjusted	Adjusted
Sex (male)	1	6,414771	1	3,56623
Age - 40-64	1,099936	1,280296	1,689316	1,917725
Age - 65-74	1,076809	1,23092	1,467236	1,736728
Age - ≥75	1,026841	1,159477	1,294904	1,687872
Place of Birth - Outside Spain	1	1,097682	1	1,147007
Socioeconomic deprivation - Mild	1,102294	1,134731	1,075556	1,12522
Socioeconomic deprivation - Moderate/severe	1,102294	1,1952	1,075556	1,18302
HIV transmission group - female homo/hetero/bisexual	1,883244	7,50108	1,769764	4,379618

HIV transmission group - PWID	1,5378	1,729577	1,922328	2,317876
HIV transmission group - MSM	2,429238	2,641269	2,364769	2,547738
HIV transmission group - Others	1,428454	1,545984	1,398058	1,472003
CD4 T-cell count - <200	1,010795	1,080254	3,295943	3,85788
CD4 T-cell count - 200-500	1,010795	1,053781	3,295943	4,057348
Plasma HIV-RNA - detectable	1	1,050397	1	1,100773
Bakcbone ART - TAF	4,799077	4,847104	4,265625	5,416442
Bakcbone ART - TDF	2,050212	1,975447	2,008681	2,353352
Bakcbone ART - ABC+3TC	4,518226	4,584842	3,888888	4,870552
Number of comorbidities - 1	1,29418	1,327239	4,139769	4,193891
Number of comorbidities - 2	1,252088	1,337336	3,91455	3,997017
Number of comorbidities - 3	1,156116	1,264007	4,24661	4,544029
Number of comorbidities - 4 or more	1,193116	1,512377	5,333893	5,81974

Abbreviations: SARS-CoV-2, Severe acute respiratory syndrome coronavirus 2; COVID-19, Coronavirus Disease 2019; PWID, people who inject drugs; MSM, men who have sex with men; ART, antiretroviral therapy; TAF, tenofovir alafenamide; TDF, tenofovir disoproxil fumarate; ABC, abacavir; 3TC, lamivudine.

Table 4: Characteristics of HIV-positive individuals with and without SARS-CoV-2 diagnosis in Catalonia, Spain

	People living with HIV (PLWH) No. (%)			P Value
	All	SARS-CoV-2 negative	SARS-CoV-2 positive	
Characteristic	(n = 13142)	(n = 12393)	(n = 749)	
Sex^a				0.59
Male	10739 (81.7)	10121 (81.7)	618 (82.5)	
Female	2402 (18.3)	2271 (18.3)	131 (17.5)	
Missing	1 (0.01)	1 (0.01)	0 (0)	
Age, median (IQR), y^b	47.6 (39.6-54.9)	47.8 (39.8-55.0)	43.5 (37.0-52.7)	<0.0001
Age category, y^b				<0.0001
16-39	3442 (26.2)	3181 (25.7)	261 (34.9)	
40-64	8870 (67.5)	8426 (68.0)	444 (59.3)	
65-74	643 (4.9)	610 (4.9)	33 (4.4)	
≥75	187 (1.4)	176 (1.4)	11 (1.5)	
Country of origin^c				<0.0001
Spain	8564 (65.2)	8162 (65.9)	402 (53.7)	
Outside Spain	4576 (34.8)	4229 (34.1)	347 (46.3)	
Unknown	2 (0.02)	2 (0.02)	0 (0)	
Socioeconomic deprivation				0.79
Least deprived	6377 (48.5)	6004 (48.5)	373 (49.8)	
Mildly deprived	2523 (19.2)	2409 (19.4)	114 (15.2)	
Most deprived	3941 (30.0)	3696 (29.8)	245 (32.7)	
Missing	301 (2.3)	284 (2.3)	17 (2.3)	
HIV transmission route				<0.0001
PWID	1876 (14.3)	1817 (14.7)	59 (7.9)	
MSM	6870 (52.3)	6425 (51.8)	445 (59.4)	

Male heterosexual	1768 (13.5)	1680 (13.6)	88 (11.8)	
Female hetero/homo/bisexual	1714 (13.0)	1609 (13.0)	105 (14.0)	
Other	787 (6.0)	741 (6.0)	46 (6.1)	
Missing	127 (1.0)	121 (1.0)	6 (0.8)	
Years since HIV diagnosis, median (IQR)	12.0 (7.0-18.7)	12.1 (7.1-18.9)	10.3 (6.1-15.7)	<0.0001
CD4 count (cells per μL) category				0.65
<200	413 (3.1)	388 (3.1)	25 (3.3)	
200-499	2716 (20.7)	2552 (20.6)	164 (21.9)	
\geq 500	9451 (71.9)	8922 (72.0)	529 (70.6)	
Missing	562 (4.3)	531 (4.3)	31 (4.1)	
CD4 count (cells per μL), median (IQR)	692.5 (500.0-917.0)	692.0 (500.0-917.0)	695.5 (483.5-912.3)	0.65
CD4/CD8 ratio, median (IQR)	0.9 (0.6-1.2)	0.9 (0.6-1.2)	0.9 (0.6-1.2)	0.26
HIV-RNA				0.19
Detectable	1068 (8.1)	1017 (8.2)	51 (6.8)	
Undetectable	10758 (81.8)	10136 (81.8)	622 (83.0)	
Missing	1316 (10.0)	1240 (10.0)	76 (10.2)	
Chronic comorbidities				
Number of comorbidities				0.83
0	4489 (34.2)	4231 (34.1)	258 (34.5)	
1	3434 (26.1)	3247 (26.2)	187 (25.0)	
2	2244 (17.1)	2106 (17.0)	138 (18.4)	
3	1325 (10.1)	1253 (10.1)	72 (9.6)	
4 or more	1650 (12.6)	1556 (12.6)	94 (12.6)	
Type of comorbidities				
Respiratory disease	1665 (12.7)	1553 (12.5)	112 (15.0)	0.06
Cardiovascular disease	1912 (14.6)	1800 (14.5)	112 (15.0)	0.78
Autoimmune disease	1376 (10.5)	1282 (10.3)	94 (12.6)	0.06

Chronic kidney disease	569 (4.3)	535 (4.3)	34 (4.5)	0.84
Chronic liver disease	2144 (16.3)	2038 (16.4)	106 (14.2)	0.11
Neuropsychiatric	3458 (26.3)	3272 (26.4)	186 (24.8)	0.36
Diabetes	741 (5.6)	706 (5.7)	35 (4.7)	0.27
Metabolic disease	2945 (22.4)	2781 (22.4)	164 (21.9)	0.76
Cancer	1198 (9.1)	1133 (9.1)	65 (8.7)	0.71
Hypertension	2752 (20.9)	2585 (20.9)	167 (22.3)	0.37
Obesity	1114 (8.5)	1042 (8.4)	72 (9.6)	0.27
Years on ART, median (IQR)^d	9.4 (5.1-15.0)	9.5 (5.1-15.2)	7.8 (4.6-12.9)	<0.0001
Backbone ART				0.79
TAF	6606 (50.2)	6215 (50.2)	391 (52.2)	
TDF	939 (7.2)	891 (7.2)	48 (6.4)	
ABC+3TC	3820 (29.1)	3594 (29.0)	226 (30.2)	
Other	670 (5.1)	630 (5.1)	40 (5.3)	
Missing	1107 (8.4)	1063 (8.6)	44 (5.9)	
3rd ART				0.06
INIs	8048 (61.2)	7565 (61.0)	483 (64.5)	
PIs	2699 (20.5)	2574 (20.8)	125 (16.7)	
NNRTIs	3167 (24.1)	2993 (24.2)	174 (23.2)	
Other	68 (0.1)	66 (0.1)	2 (0)	
Missing	255 (1.9)	244 (2.0)	11 (1.5)	

Abbreviations: SARS-CoV-2, Severe acute respiratory syndrome coronavirus 2; IQR, interquartile range; PWID, people who inject drugs; MSM, men who have sex with men; ART, antiretroviral therapy; TAF, tenofovir alafenamide; TDF, tenofovir disoproxil fumarate; ABC, abacavir; 3TC, lamivudine; INIs, integrase inhibitors; PIs, protease inhibitors; NNRTIs, non-nucleoside reverse transcriptase inhibitors.

^a Sex at birth as registered in the health registries of the participating hospitals was used. One participant in the overall cohort had unknown sex

^b Age for all patients was as at February 1, 2020

^c Country of origin was as indicated by the Public Data Analysis for Health Research and Innovation Program of Catalonia (PADRIS) recorded as Spanish or Non-Spanish

^d Years on ART was defined as the difference in time between the first treatment administration date to the latest treatment date or the latest hospital visit if the last treatment date is missing

Table 5: Characteristics of PLWH with and without SARS-CoV-2 diagnosis; hospitalized patients; patients admitted to the ICU; and death in Catalonia, Spain

	PLWH	SARS-CoV-2 negative	SARS-CoV-2 positive	Hospitalized	ICU	Death
Characteristic	(n = 13142)	(n = 12393)	(n = 749)	(n = 103)	(n = 7)	(n = 13)
Sex ^a						
Male	10739 (81•72)	10121 (81•67)	618 (82•51)	81 (78•64)	6 (85•71)	10 (76•92)
Female	2402 (18•28)	2271 (18•32)	131 (17•49)	22 (21•36)	1 (14•29)	3 (23•08)
Missing	1 (0•01)	1 (0•01)	0 (0)	0 (0)	0 (0)	0 (0)
Age, median (IQR), y ^b	47•61 (39•61-54•88)	47•79 (39•77-54•98)	43•53 (36•96-52•71)	52•25 (43•42-59•8)	54•87 (46•74-61•52)	60•18 (53•62-67•46)
Age category, y ^b						
16-39	3442 (26•19)	3181 (25•67)	261 (34•85)	16 (15•53)	1 (14•29)	1 (7•69)
40-64	8870 (67•49)	8426 (67•99)	444 (59•28)	71 (68•93)	4 (57•14)	7 (53•85)
65-74	643 (4•89)	610 (4•92)	33 (4•41)	10 (9•71)	2 (28•57)	3 (23•08)
≥ 75	187 (1•42)	176 (1•42)	11 (1•47)	6 (5•83)	0 (0)	2 (15•38)
Place of birth ^c						
Spain	8564 (65•17)	8162 (65•86)	402 (53•67)	59 (57•28)	4 (57•14)	11 (84•62)
Outside Spain	4576 (34•82)	4229 (34•12)	347 (46•33)	44 (42•72)	3 (42•86)	2 (15•38)
Unknown	2 (0•02)	2 (0•02)	0 (0)	0 (0)	0 (0)	0 (0)
Socioeconomic status						
None economic deprivation	6377 (48•52)	6004 (48•45)	373 (49•8)	54 (52•43)	4 (57•14)	5 (38•46)
Mild economic deprivation	2523 (19•2)	2409 (19•44)	114 (15•22)	12 (11•65)	0 (0)	3 (23•08)
Moderate/Severe economic deprivation	3941 (29•99)	3696 (29•82)	245 (32•71)	34 (33•01)	2 (28•57)	5 (38•46)
Missing	301 (2•29)	284 (2•29)	17 (2•27)	3 (2•91)	1 (14•29)	0 (0)
HIV transmission route						
PWID	1876 (14•27)	1817 (14•66)	59 (7•88)	19 (18•45)	1 (14•29)	2 (15•38)

MSM	6870 (52•28)	6425 (51•84)	445 (59•41)	48 (46•6)	3 (42•86)	4 (30•77)
Male heterosexual	1768 (13•45)	1680 (13•56)	88 (11•75)	14 (13•59)	2 (28•57)	4 (30•77)
Female hetero/homo/bisexual	1714 (13•04)	1609 (12•98)	105 (14•02)	15 (14•56)	1 (14•29)	2 (15•38)
Other	787 (5•99)	741 (5•98)	46 (6•14)	7 (6•8)	0 (0)	1 (7•69)
Missing	127 (0•97)	121 (0•98)	6 (0•8)	0 (0)	0 (0)	0 (0)
Years since HIV diagnosis, median (IQR)	11•95 (7-18•72)	12•05 (7•06-18•93)	10•25 (6•08-15•74)	14•4 (9•36-20•71)	12•01 (7•69-20•99)	17•36 (12•67-21•69)
CD4 count (cells per μ L) category						
<200	413 (3•14)	388 (3•13)	25 (3•34)	8 (7•77)	0 (0)	2 (15•38)
200-499	2716 (20•67)	2552 (20•59)	164 (21•9)	30 (29•13)	1 (14•29)	6 (46•15)
\geq 500	9451 (71•91)	8922 (71•99)	529 (70•63)	60 (58•25)	4 (57•14)	5 (38•46)
Missing	562 (4•28)	531 (4•28)	31 (4•14)	5 (4•85)	2 (28•57)	0 (0)
CD4 count (cells per μ L), median (IQR)	692•5 (500-917)	692 (500-917)	695•5 (483•5-912•25)	611 (387•5-865•75)	587 (577-700)	469 (250-587)
CD4/CD8 ratio, median (IQR)	0•88 (0•6-1•22)	0•87 (0•6-1•22)	0•91 (0•63-1•21)	0•78 (0•55-1•09)	0•8 (0•66-1•06)	0•72 (0•45-1•04)
HIV-RNA						
Detectable	1068 (8•13)	1017 (8•21)	51 (6•81)	14 (13•59)	0 (0)	1 (7•69)
Undetectable	10758 (81•86)	10136 (81•79)	622 (83•04)	76 (73•79)	6 (85•71)	10 (76•92)
Missing	1316 (10•01)	1240 (10•01)	76 (10•15)	13 (12•62)	1 (14•29)	2 (15•38)
Chronic comorbidities						
Number of comorbidities						
0	4489 (34•16)	4231 (34•14)	258 (34•45)	5 (4•85)	0 (0)	0 (0)
1	3434 (26•13)	3247 (26•2)	187 (24•97)	21 (20•39)	0 (0)	2 (15•38)
2	2244 (17•08)	2106 (16•99)	138 (18•42)	19 (18•45)	0 (0)	1 (7•69)
3	1325 (10•08)	1253 (10•11)	72 (9•61)	22 (21•36)	3 (42•86)	3 (23•08)
4 or more	1650 (12•56)	1556 (12•56)	94 (12•55)	36 (34•95)	4 (57•14)	7 (53•85)

Type of comorbidities						
Respiratory disease	1665 (12•67)	1553 (12•53)	112 (14•95)	33 (32•04)	1 (14•29)	6 (46•15)
Cardiovascular disease	1912 (14•55)	1800 (14•52)	112 (14•95)	31 (30•1)	3 (42•86)	4 (30•77)
Autoimmune disease	1376 (10•47)	1282 (10•34)	94 (12•55)	22 (21•36)	3 (42•86)	2 (15•38)
Chronic kidney disease	569 (4•33)	535 (4•32)	34 (4•54)	9 (8•74)	2 (28•57)	2 (15•38)
Chronic liver disease	2144 (16•31)	2038 (16•44)	106 (14•15)	33 (32•04)	2 (28•57)	4 (30•77)
Neuropsychiatric	3458 (26•31)	3272 (26•4)	186 (24•83)	48 (46•6)	4 (57•14)	10 (76•92)
Diabetes	741 (5•64)	706 (5•7)	35 (4•67)	11 (10•68)	1 (14•29)	0 (0)
Metabolic disease	2945 (22•41)	2781 (22•44)	164 (21•9)	53 (51•46)	6 (85•71)	5 (38•46)
Cancer	1198 (9•12)	1133 (9•14)	65 (8•68)	15 (14•56)	0 (0)	5 (38•46)
Hypertension	2752 (20•94)	2585 (20•86)	167 (22•3)	42 (40•78)	5 (71•43)	6 (46•15)
Obesity	1114 (8•48)	1042 (8•41)	72 (9•61)	19 (18•45)	2 (28•57)	0 (0)
Years on ART, median (IQR) ^d	9•37 (5•09-15•02)	9•46 (5•14-15•16)	7•8 (4•59-12•91)	11•7 (6•9-17•67)	14•53 (12•71-19•48)	15•38 (11•24-17•13)
Backbone ART						
TAF						
TDF	7545 (57•41)	7106 (57•34)	439 (58•61)	64 (62•14)	4 (57•14)	7 (53•85)
ABC+3TC	3820 (29•07)	3594 (29)	226 (30•17)	26 (25•24)	3 (42•86)	3 (23•08)
Other	670 (5•1)	630 (5•08)	40 (5•34)	6 (5•83)	0 (0)	1 (7•69)
Missing	1107 (8•42)	1063 (8•58)	44 (5•87)	7 (6•8)	0 (0)	2 (15•38)
3rd ART						
INIs	8048 (61•24)	7565 (61•04)	483 (64•49)	57 (55•34)	4 (57•14)	7 (53•85)
Pis	2699 (20•54)	2574 (20•77)	125 (16•69)	29 (28•16)	2 (28•57)	3 (23•08)
NNRTIs	3167 (24•1)	2993 (24•15)	174 (23•23)	28 (27•18)	1 (14•29)	4 (30•77)
Other	68 (0•05)	66 (0•06)	2 (0)	1 (0)	0 (0)	0 (0)

Missing	255 (1•94)	244 (1•97)	11 (1•47)	1 (0•97)	0 (0)	0 (0)
---------	------------	------------	-----------	----------	-------	-------

Abbreviations: SARS-CoV-2, Severe acute respiratory syndrome coronavirus 2; IQR, interquartile range; PWID, people who inject drugs; MSM, men who have sex with men; ART, antiretroviral therapy; TAF, tenofovir alafenamide; TDF, tenofovir disoproxil fumarate; ABC, abacavir; 3TC, lamivudine; INIs, integrase inhibitors; PIs, protease inhibitors; NNRTIs, non-nucleoside reverse transcriptase inhibitors•

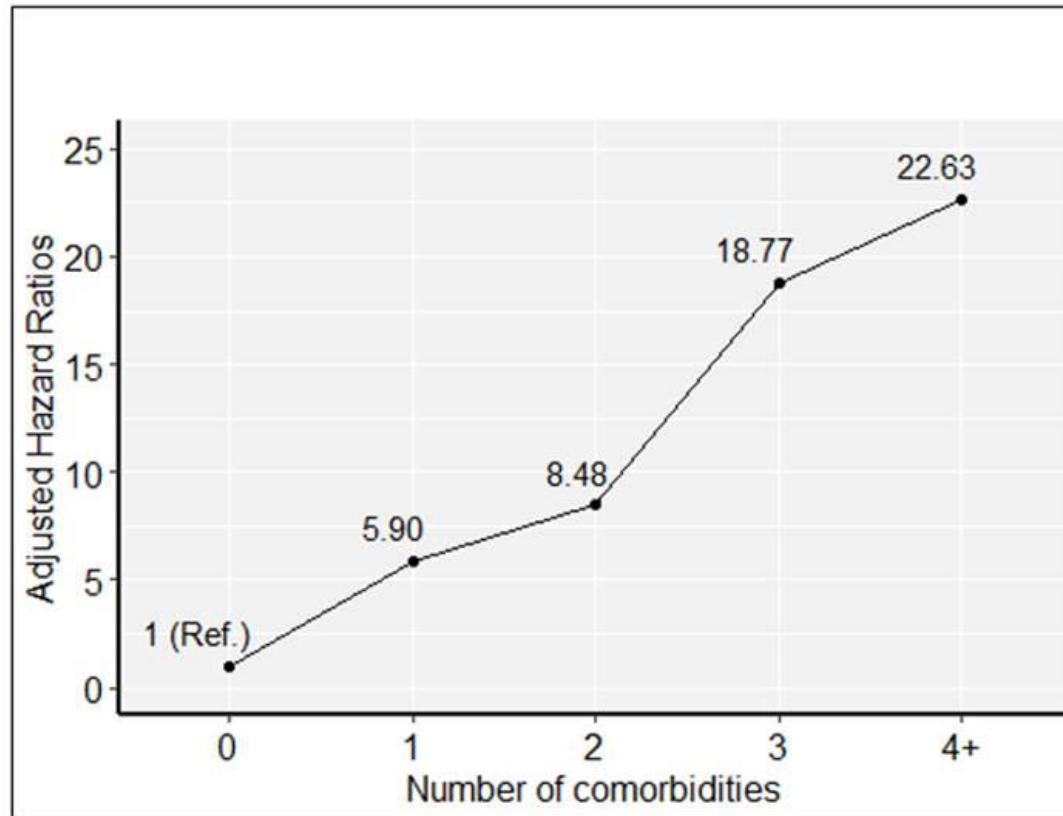
^a Sex at birth as registered in the health registries of the participating hospitals was used. One participant in the overall cohort had unknown sex.

^b Age for all patients was as at February 1, 2020.

^c Country of origin was as indicated by the Public Data Analysis for Health Research and Innovation Program of Catalonia (PADRIS) recorded as Spanish or Non-Spanish•

^d Years on ART was defined as the difference in time between the first treatment administration date to the latest treatment date or the latest hospital visit if the last treatment date is missing.

Figure 3: Diagram depicting the dose-effect of the number of comorbidities and risk of severe COVID-19 outcomes among PLWH in Catalonia, Spain



Abbreviations: PLWH, people living with HIV; SARS-CoV-2, Severe acute respiratory syndrome coronavirus 2; COVID-19, Coronavirus Disease 2019. Severe outcomes defined as hospitalization or death. Model adjusted for sex, age, country of origin, socioeconomic deprivation, HIV transmission group, backbone ART, plasma HIV-RNA viral load (categorized detectable and undetectable), CD4 cell count (categorized <200 cells per μL , 200-499 cells per μL , and ≥ 500 cells per μL), and number of comorbidities.

The PISCIS Cohort Study Group

Coordinating Centre: Centre for Epidemiological Studies of Sexually Transmitted Diseases and AIDS in Catalonia (CEEISCAT)

Project coordinator: Juliana Reyes-Urueña

Field coordinator: Andreu Bruguera Riera

Data protection and technical support: Esteve Muntada

Data management and statistical analysis: Sergio Moreno, Yesika Díaz, Jordi Aceitón.

Executive committee:

Jordi Casabona, Anna Esteve, Juliana Reyes-Urueña, Andreu Bruguera, Sergio Moreno (CEEISCAT), Jose Maria Miró (Hospital Clínic-IDIBAPS, Universitat de Barcelona), Arkaitz Imaz (Unitat de VIH i ITS, Servei de Malalties Infeccioses, Hospital Universitari de Bellvitge, IDIBELL), Pere Domingo (Unitat de VIH / SIDA Hospital de la Santa Creu i Sant Pau), Josep María Llibre (Fundació Lluita contra la Sida-Hospital Universitari Germans Trias i Pujol-Universitat Autònoma de Barcelona), Melchor Riera Jaume (Servei Medicina Interna, Hospital Universitari Son Espases), Gemma Navarro (Unitat de VIH/SIDA, Corporació Sanitària i Universitària Parc Taulí-Universitat Autònoma de Barcelona), Cristina Cortés (Unitat de VIH, Hospital General d'Hospitalet), Vicenç Falcó Ferrer (Servei de Malalties Infeccioses, Hospital Universitari Vall d'Hebron, Vall d'Hebron Research Institute, VHIR), Hernando Knobel (Servei de Malalties Infeccioses, Hospital del Mar).

Scientific committee:

Josep Mallolas (Hospital Clínic-IDIBAPS-Universitat de Barcelona), Daniel Podzamczar, Juan Tiraboschi (Hospital Universitari de Bellvitge-IDIBELL), Adrià Curran, Joaquín Burgos (Hospital Universitari Vall d'Hebron), Maria Gracia Mateo, Maria del Mar Gutierrez, (Hospital de la Santa Creu i Sant Pau), Javier Murillas (Hospital Son Espases de Mallorca), Francisco Homar, Jose Vicente Fernández-Montero (Hospital Son Llätzer), Eva González (Hospital de Santa Maria), Joaquim Peraire, Francesc Vidal (Hospital Joan XXIII), Lluís Force (Hospital de Mataró-Consorci Sanitari del Maresme) Elena Leon (Consorci Sanitari Integral) Àngels Masabeu (Hospital de Palamós),

Ingrid Vilaró (Hospital General de Vic), Amat- Joaquim Orti (Hospital Verge de la Cinta de Tortosa), David Dalmau, Àngels Jaen (Hospital Universitari Mútua Terrassa), Elisabet Deig (Hospital General de Granollers).

Data management, technical support and statistical analysis in hospitals:

Elisa De Lazzari, Leire Berrocal (Hospital Clínic-IDIBAPS-Universitat de Barcelona), Guillem Fernandez (Hospital Universitari de Bellvitge-IDIBELL), Lucía Rodríguez Vázquez (Hospital Universitari Vall d'Hebron), Freya Gargoulas, Toni Vanrell (Hospital Son Espases y Hospital Son Llàtzer), Jose Carlos Rubia (Consorti Sanitari Integral), Josep Vilà (Serveis de Salut Integrats Baix Empordà), Marina Martínez (Hospital Universitari Mútua Terrassa), Bibiana Morell (Hospital de Santa Maria), Maribel Tamayo (Hospital General de Granollers).

Clinical Collaborators:

Daniel Kwakye Nomah, Jorge Palacio (CEEISCAT), Juan Ambrosioni, Montse Laguno, María Martínez-Rebollar, José Luis Blanco, Felipe Garcia, Esteban Martínez, Berta Torres, Lorena de la Mora, Alexy Inciarte, Ainoa Ugarte, Iván Chivite, Ana González-Cordon, Lorna Leal (Hospital Clínic-IDIBAPS-Universitat de Barcelona), Antoni Jou (Fundació Lluita contra la Sida-Fundació IrsiCaixa-Hospital Universitari Germans Trias i Pujol-Universitat Autònoma de Barcelona), Maria Saumoy, Ana Silva, Sofia Scévola (Hospital Universitari de Bellvitge-IDIBELL), Jordi Navarro, Paula Suanzes (Hospital Universitari Vall d'Hebron), Isabel Mur (Hospital de la Santa Creu i Sant Pau), Maria Àngels Ribas, Antoni A Campins, Francisco Fanjul, María Leyes, María Peñaranda, María Luisa Martin, Helem Haydee Vilchez (Hospital Son Espases de Mallorca), Sònia Calzado, Manel Cervantes, M. José Amengual, Marta Navarro (Corporació Sanitària i Universitària Parc Taulí-Universitat Autònoma de Barcelona), Antoni Payeras, Carmen Cifuentes, Aroa Villoslada, Patricia Sorní, Marta Molero (Hospital Son Llàtzer), Nadia Abdulghani, Thaïs Comella, Rocio Sola (Hospital de Santa Maria), Montserrat Vargas, Consuleo Viladés, Anna Martí (Hospital Joan XXIII), Pilar Barrufet, Laia Arbones (Hospital de Mataró-Consorti Sanitari del Maresme), Elena Chamorro (Hospital Verge de la Cinta de Tortosa), Mireia Cairó, Xavier Martinez-Lacasa, Roser Font (Hospital Universitari Mútua Terrassa), Lizza Macorigh (Hospital General de Granollers).

Civil society representatives: Sebastián Meyer (STOP SIDA) and Juanse Hernández (GTT)