

## SUPPLEMENTARY INFORMATION

### **Plasma lipidomic profiles of kidney, breast, and prostate cancer patients differ from healthy controls**

Denise Wolrab<sup>1</sup>, Robert Jirásko<sup>1</sup>, Ondřej Peterka<sup>1</sup>, Jakub Idkowiak<sup>1</sup>, Michaela Chocholoušková<sup>1</sup>, Zuzana Vaňková<sup>1</sup>, Karel Hořejší<sup>1</sup>, Ivana Brabcová<sup>1</sup>, David Vrána,<sup>2,3</sup> Hana Študentová<sup>2</sup>, Bohuslav Melichar<sup>2</sup>, Michal Holčapek<sup>1,\*</sup>

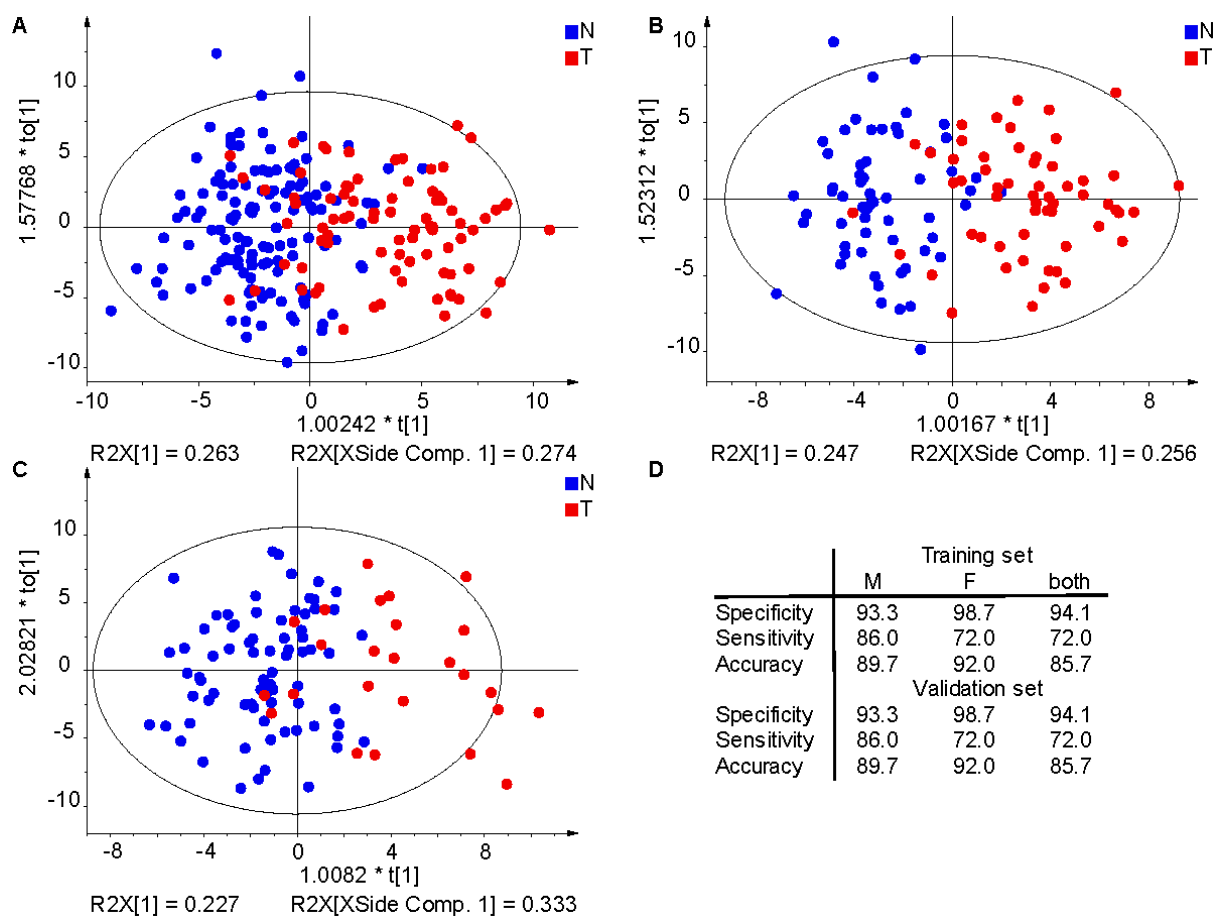
<sup>1</sup> *University of Pardubice, Faculty of Chemical Technology, Department of Analytical Chemistry, Studentská 573, 532 10 Pardubice, Czech Republic*

<sup>2</sup> *Department of Oncology, Faculty of Medicine and Dentistry, Palacký University and University Hospital, I.P. Pavlova 6, 775 20 Olomouc, Czech Republic*

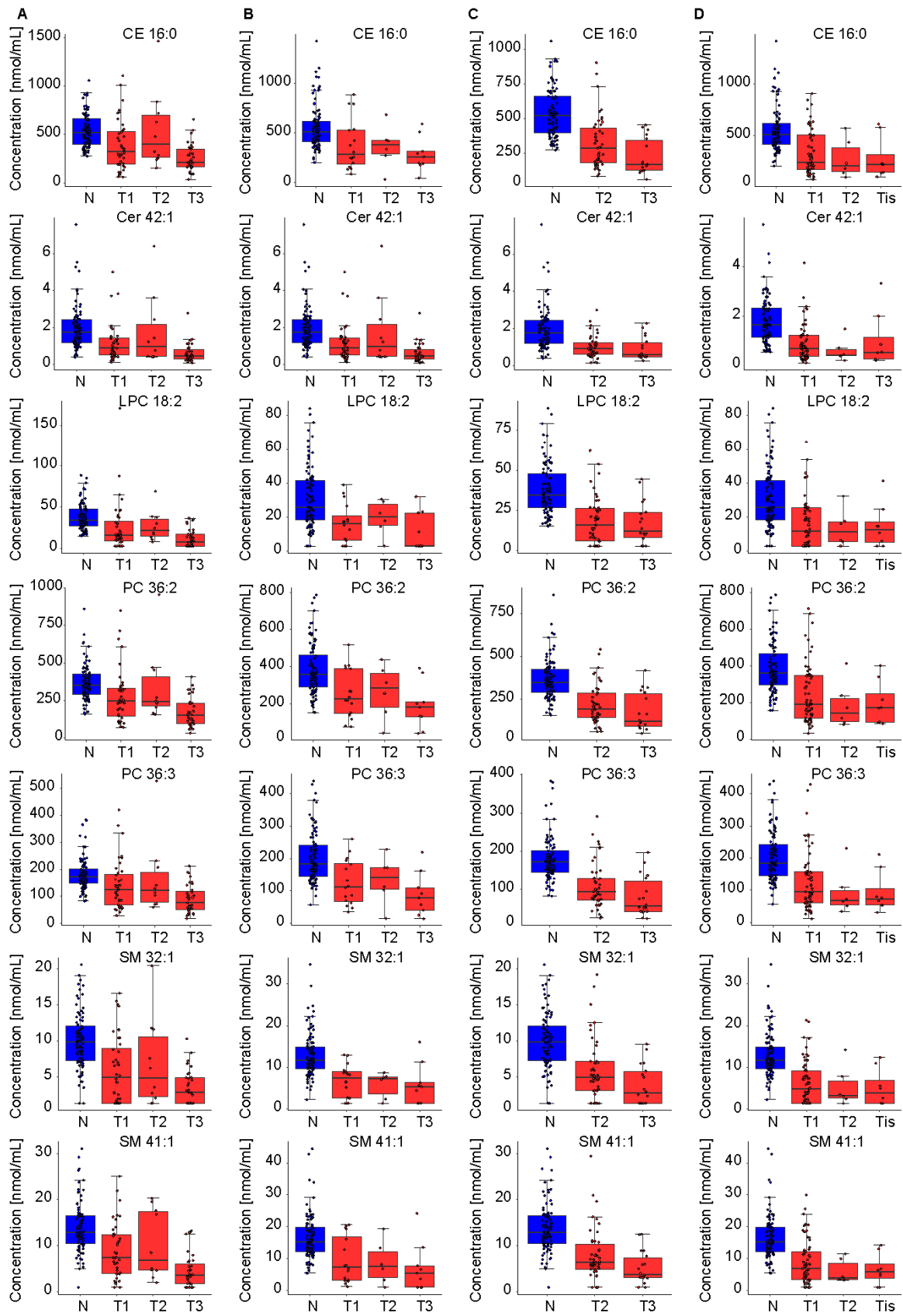
<sup>3</sup> *Current address: Hospital Nový Jičín, Comprehensive Cancer Center Nový Jičín, Czech Republic*

\* Corresponding Author: Michal Holčapek

E-mail: Michal.Holcapek@upce.cz



**Supplementary Fig. 1.** Comparison of parameters of OPLS-DA statistical models prepared for: **a** both genders, **b** only males, **c** only females, and **d** specificity, sensitivity, and accuracy for all models.



**Supplementary Fig. 2.** Box plots for seven most dysregulated lipid species shown separately for: **a** kidney cancer males, **b** kidney cancer females, **c** breast cancer, and **d** prostate cancer.