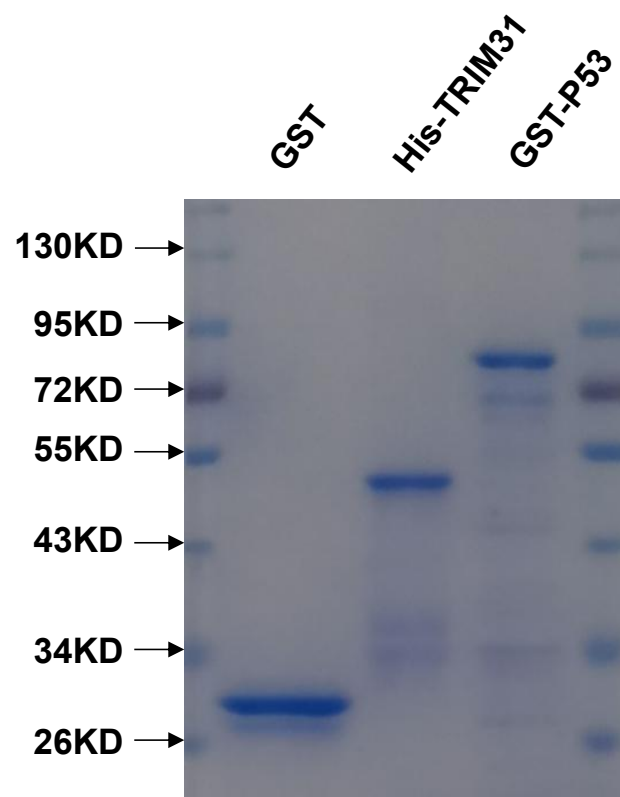
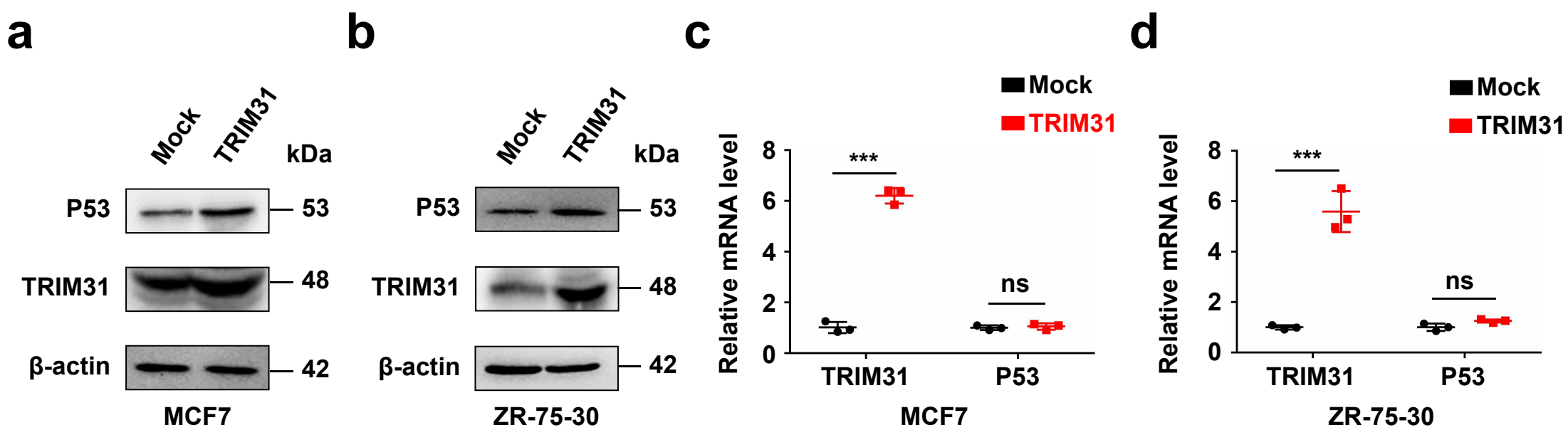


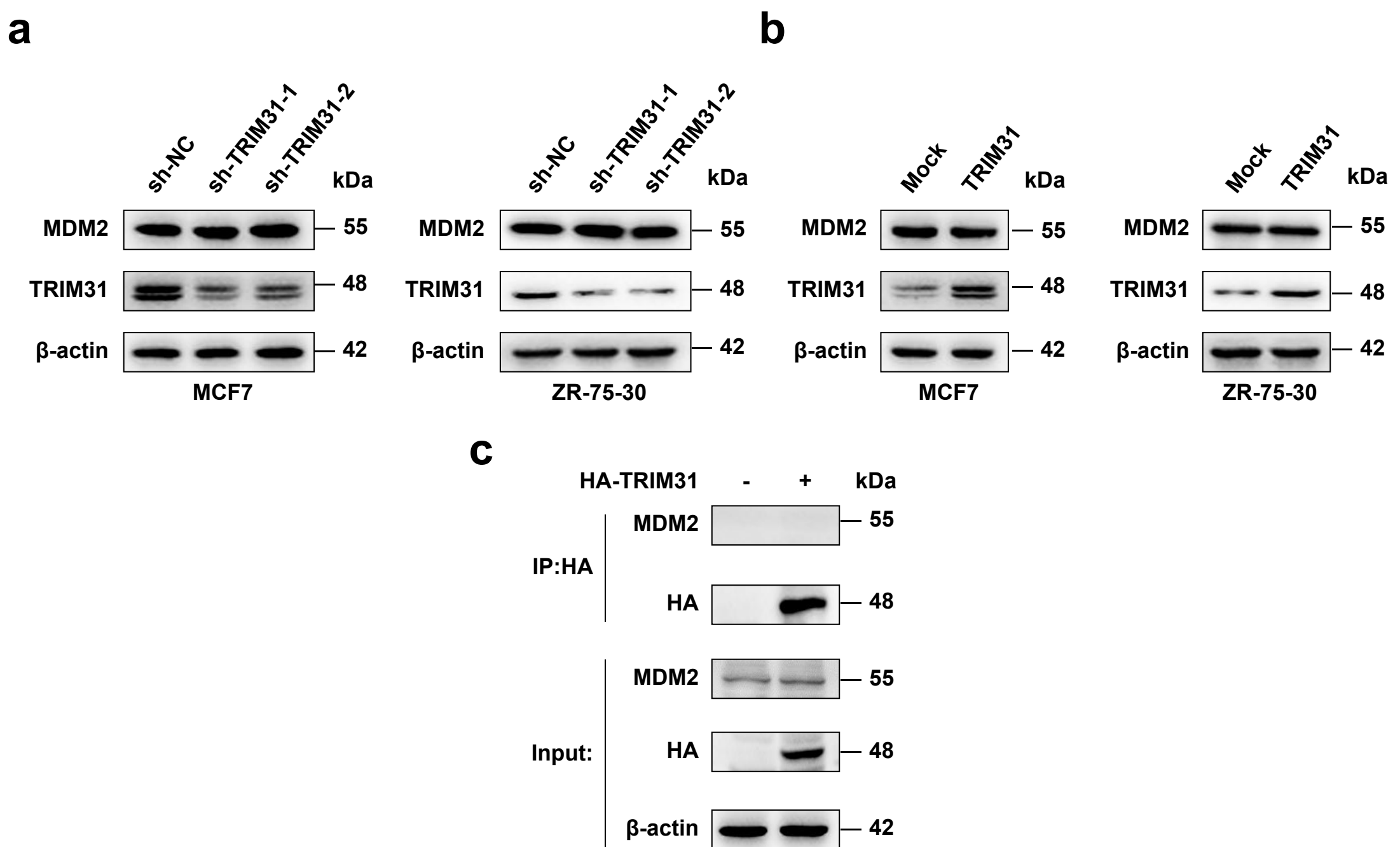
Supplementary Fig. S1



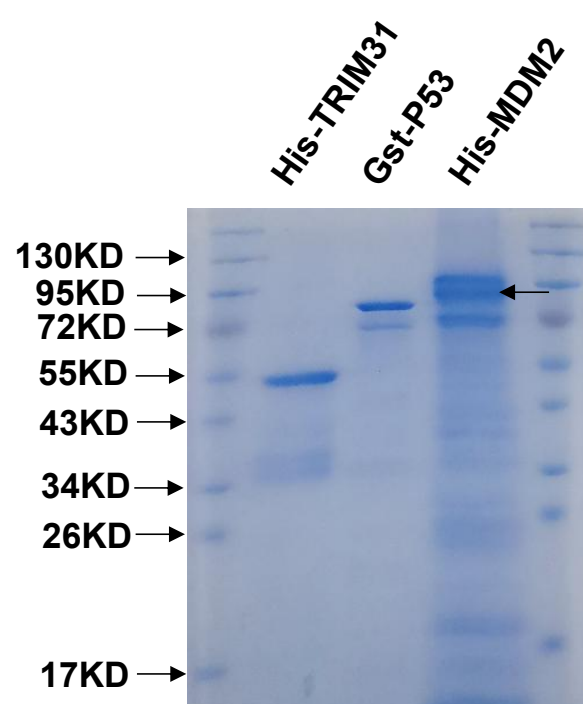
Supplementary Fig. S2



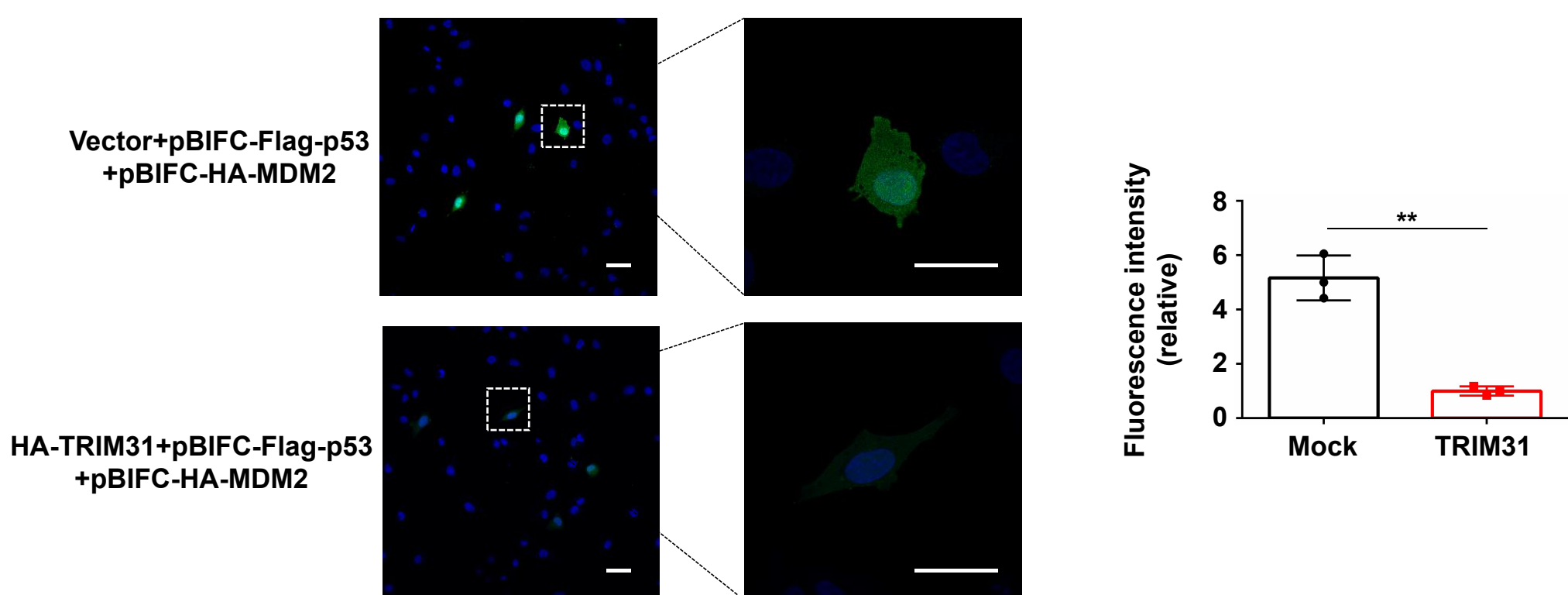
Supplementary Fig. S3



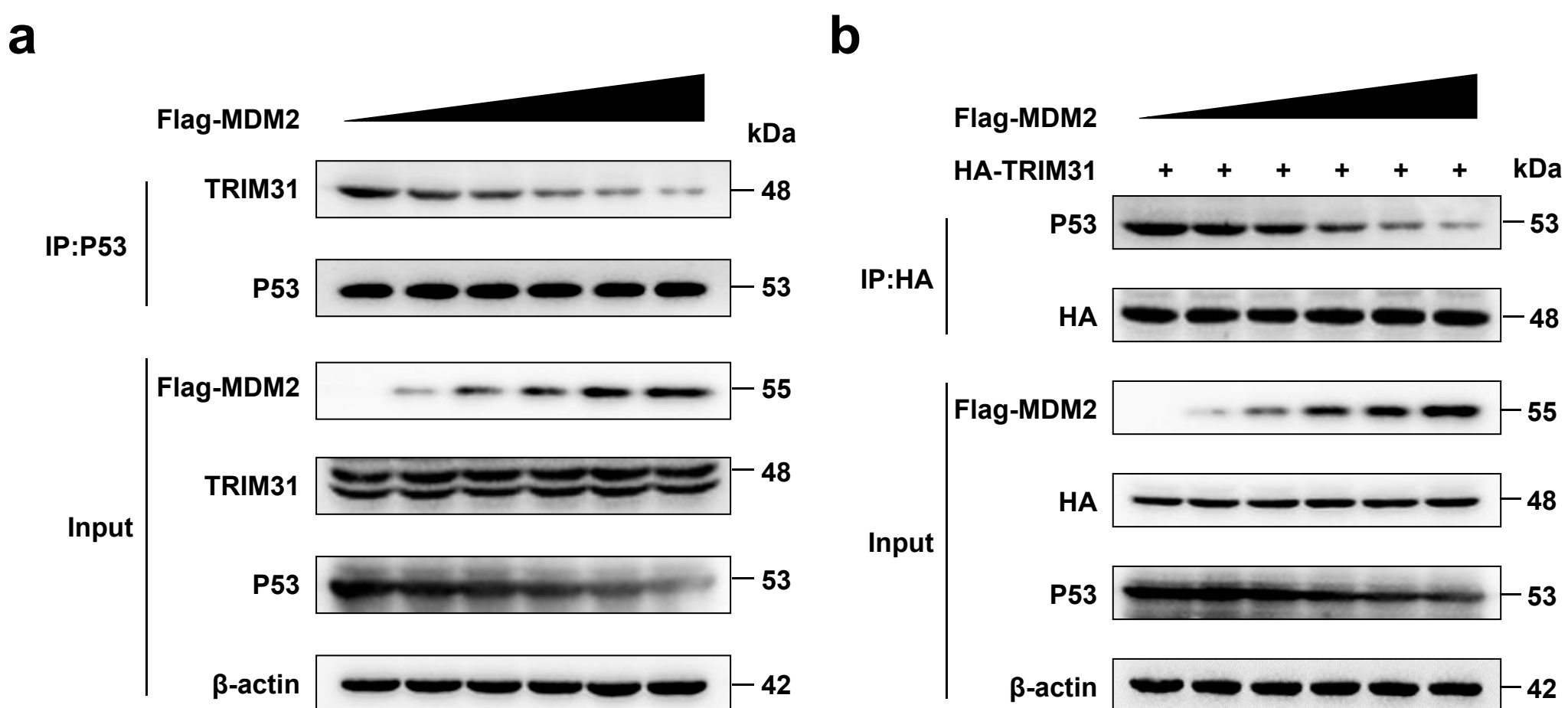
Supplementary Fig. S4



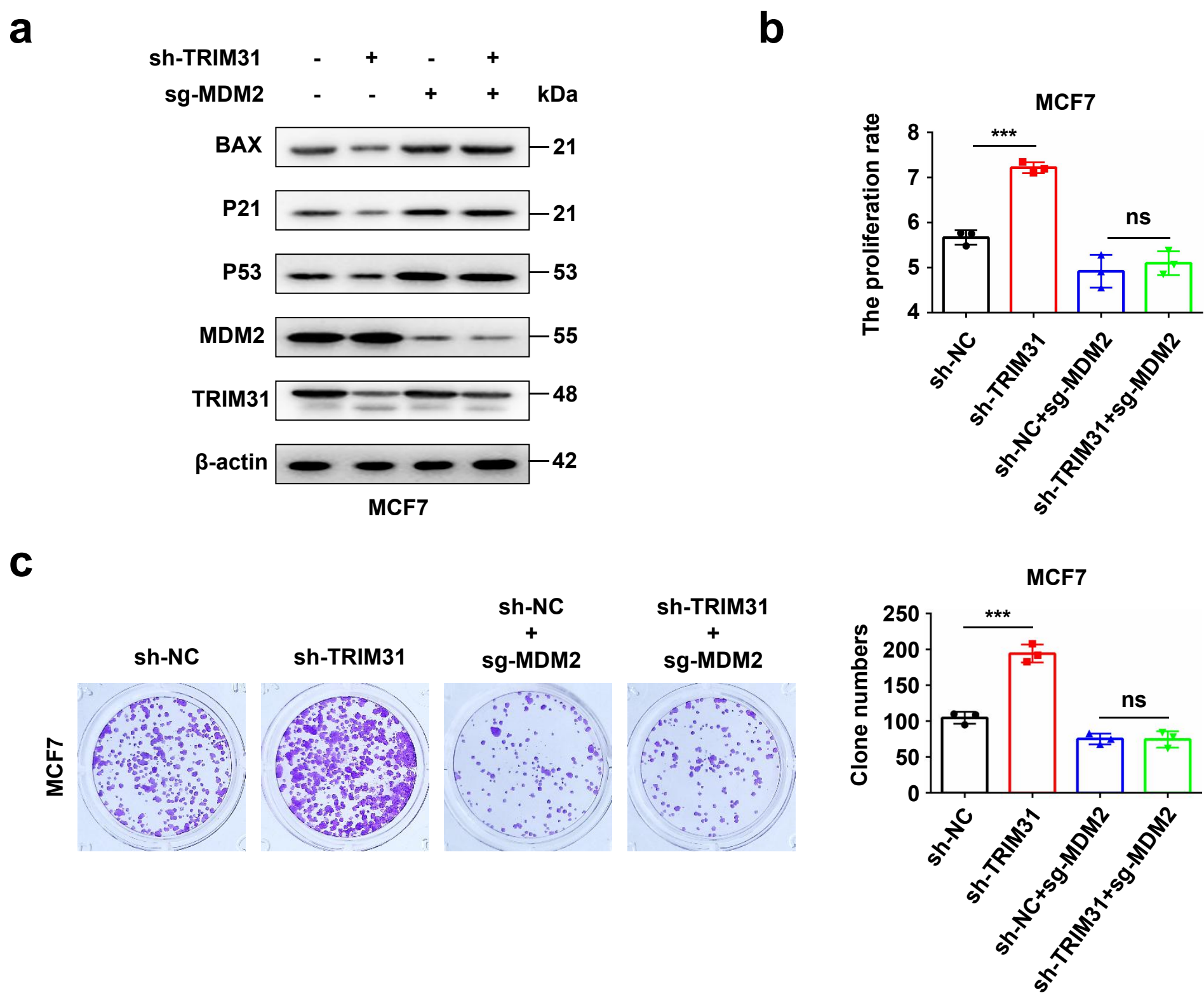
Supplementary Fig. S5



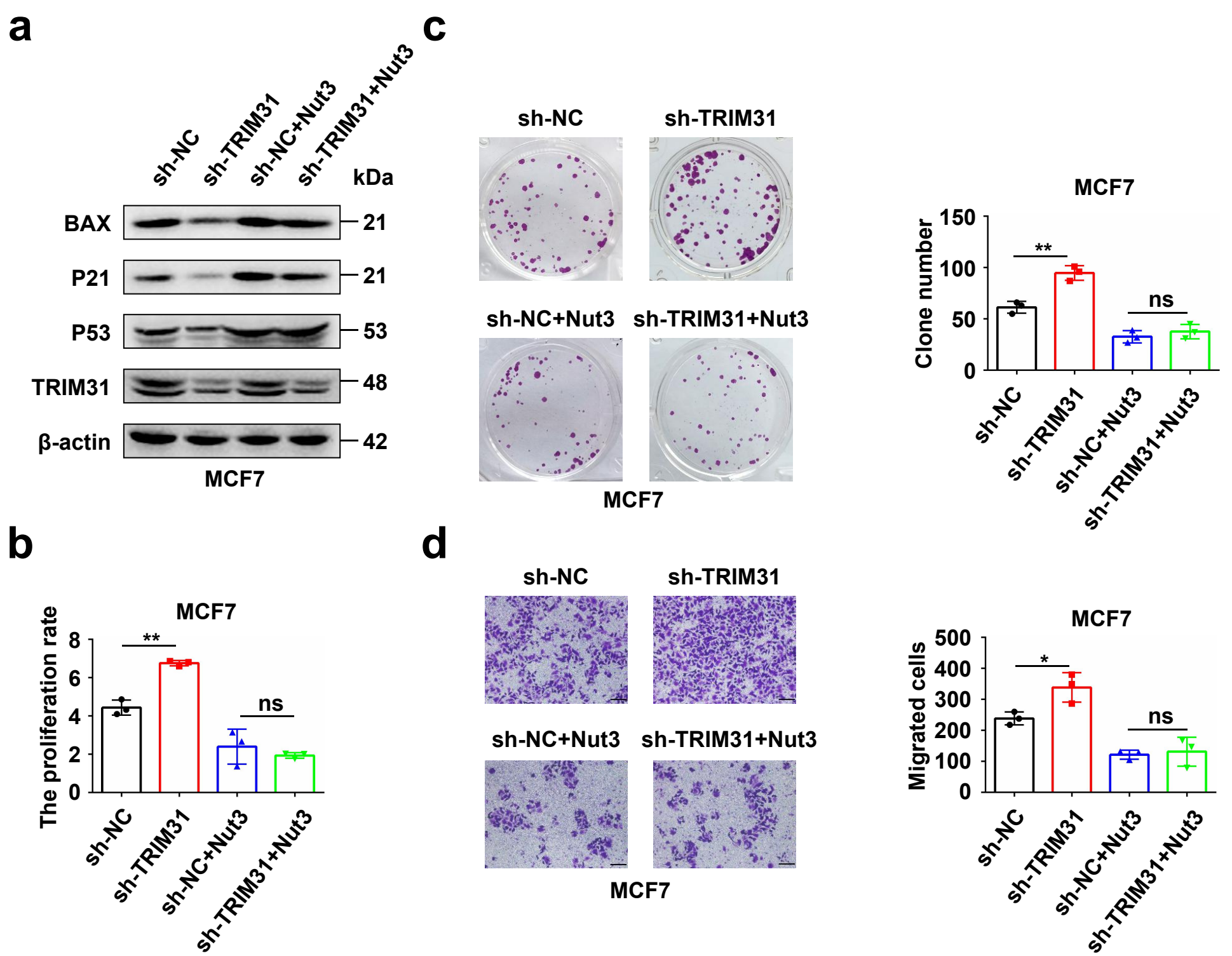
Supplementary Fig. S6



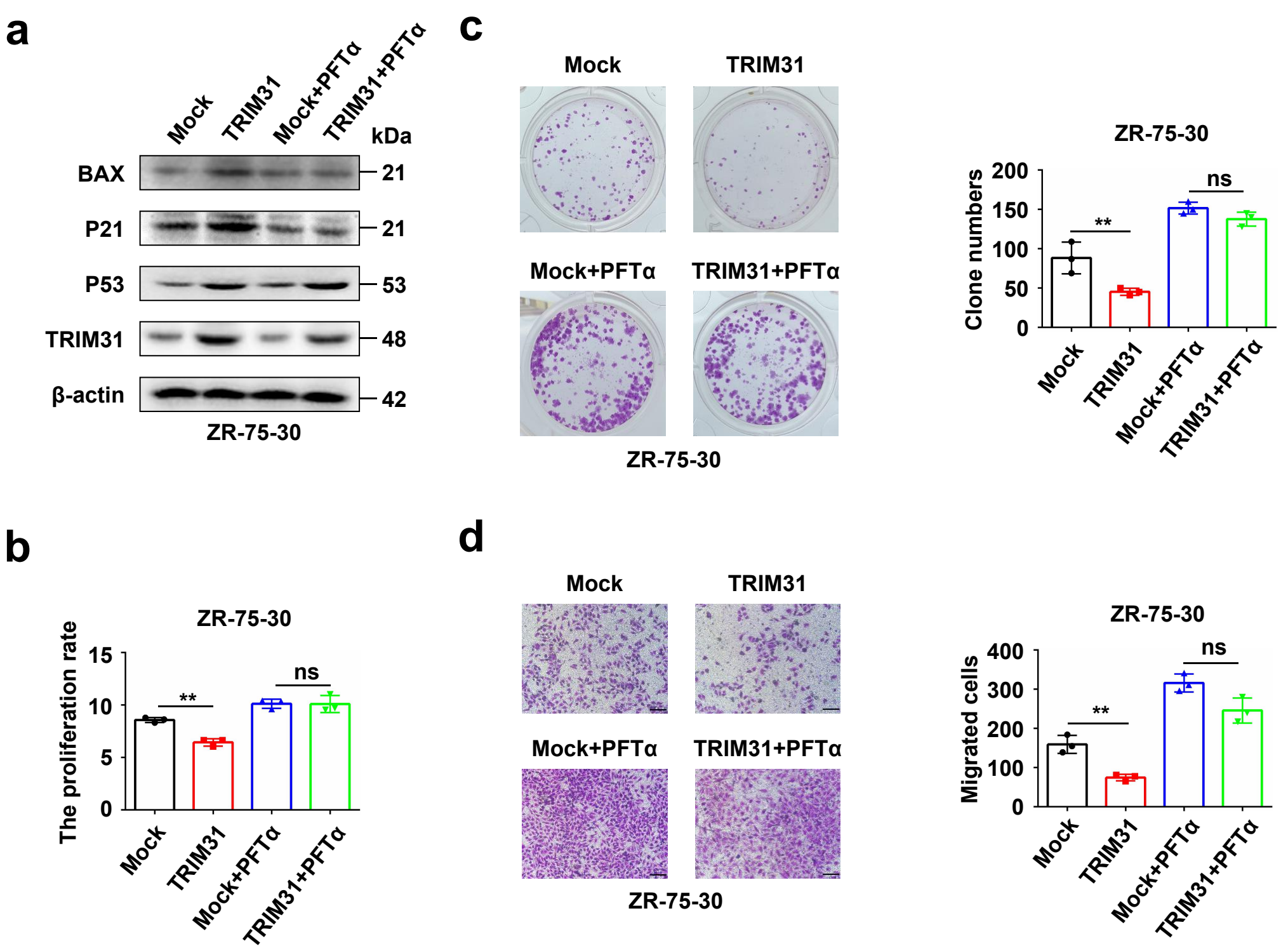
Supplementary Fig. S7



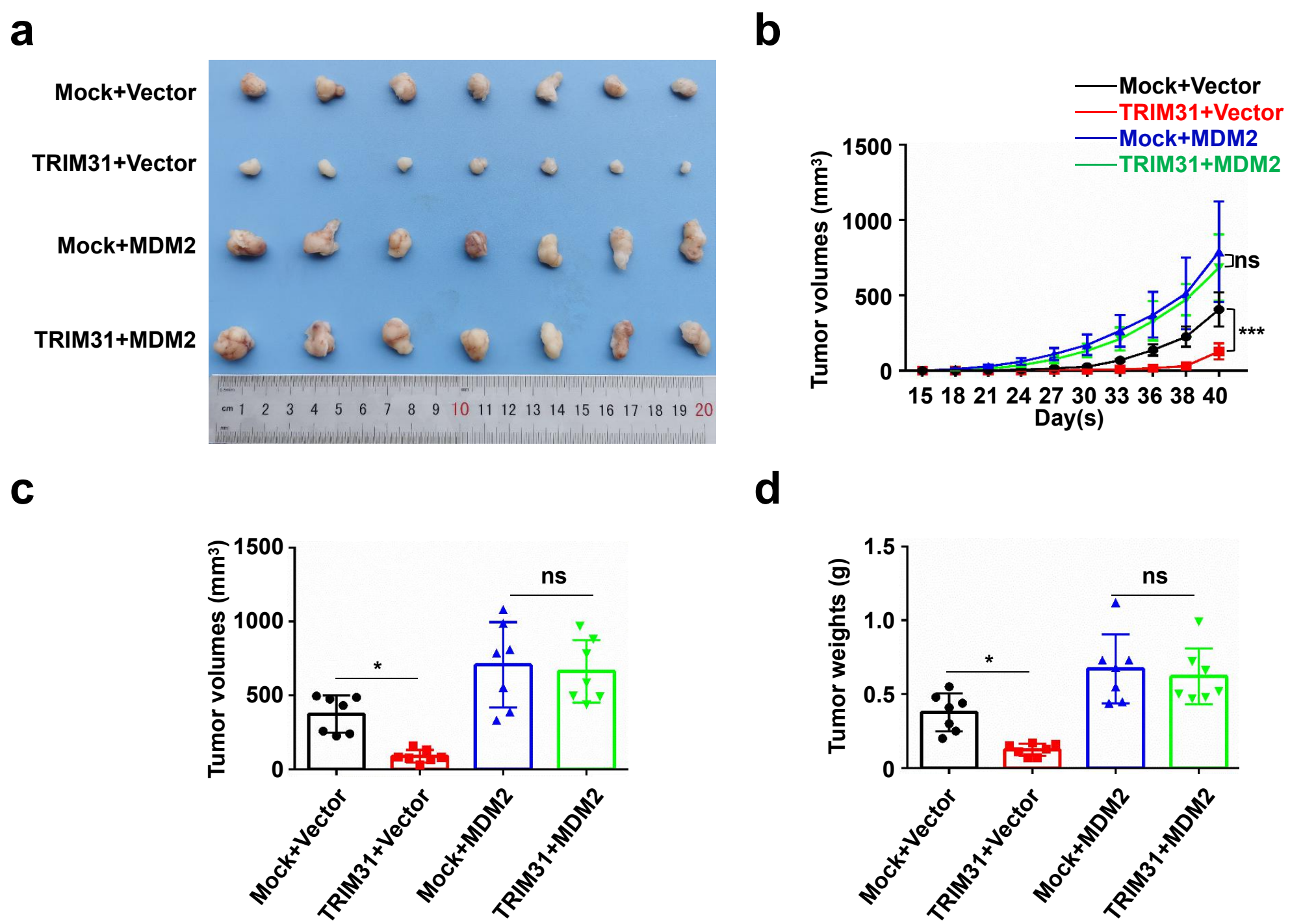
Supplementary Fig. S8



Supplementary Fig. S9



Supplementary Fig. S10



RBMXL1	7	1	6	5	1	1	16.7	42.141	390	0.0047059	6.2076	16.7	11.8	0	1192500	0
RAN	1	1	0	1	0	1	10.2	14.731	128	0.0046948	6.2011	0	10.2	0	678110	0
IPLL5	1	1	1	1	1	1	3.7	23.15	215	0.0046729	6.1897	3.7	3.7	0	1794500	0
SH2D4A	1	1	0	1	0	1	6.3	22.649	189	0.0046512	6.1668	0	6.3	0	784930	0
ARFGAP1	1	1	1	1	1	1	5.7	26.555	244	0.0046296	6.1491	5.7	5.7	0	102890	0
ERH	1	1	0	1	0	1	15.5	8.2033	71	0.0046189	6.1339	0	15.5	0	486480	0
PFN2	1	1	0	1	0	1	15.4	9.7982	91	0.0045977	6.0861	0	15.4	0	692560	0
GSPT2	1	1	1	1	1	1	2.7	68.882	628	0.0068182	6.0292	2.7	2.7	0	191610	0
KCTD19	1	1	0	1	0	1	2.7	104.94	926	1	-2	0	2.7	0	145630	0
DNAJC13	1	1	1	1	1	1	0.8	254.41	2243	1	-2	0.8	0.8	0	789320	0
TUBB3	13	0	13	13	0	0	15.9	88.381	797	1	-2	15.9	15.9	0	206880	0

Supplementary Table S3:

The correlation of TRIM31 expression and TP53 status of breast cancer patients (OS)

Parameters	Cases	TRIM31 expression		<i>P</i> values
		Low	High	
	327	163	164	
TP53 status				0.964
Wide type	197	98	99	
Mutant	130	65	65	

The correlation of TRIM31 expression and TP53 status of breast cancer patients (RFS)

Parameters	Cases	TRIM31 expression		<i>P</i> values
		Low	High	
	461	234	227	
TP53 status				0.626
Wide type	273	136	137	
Mutant	188	98	90	