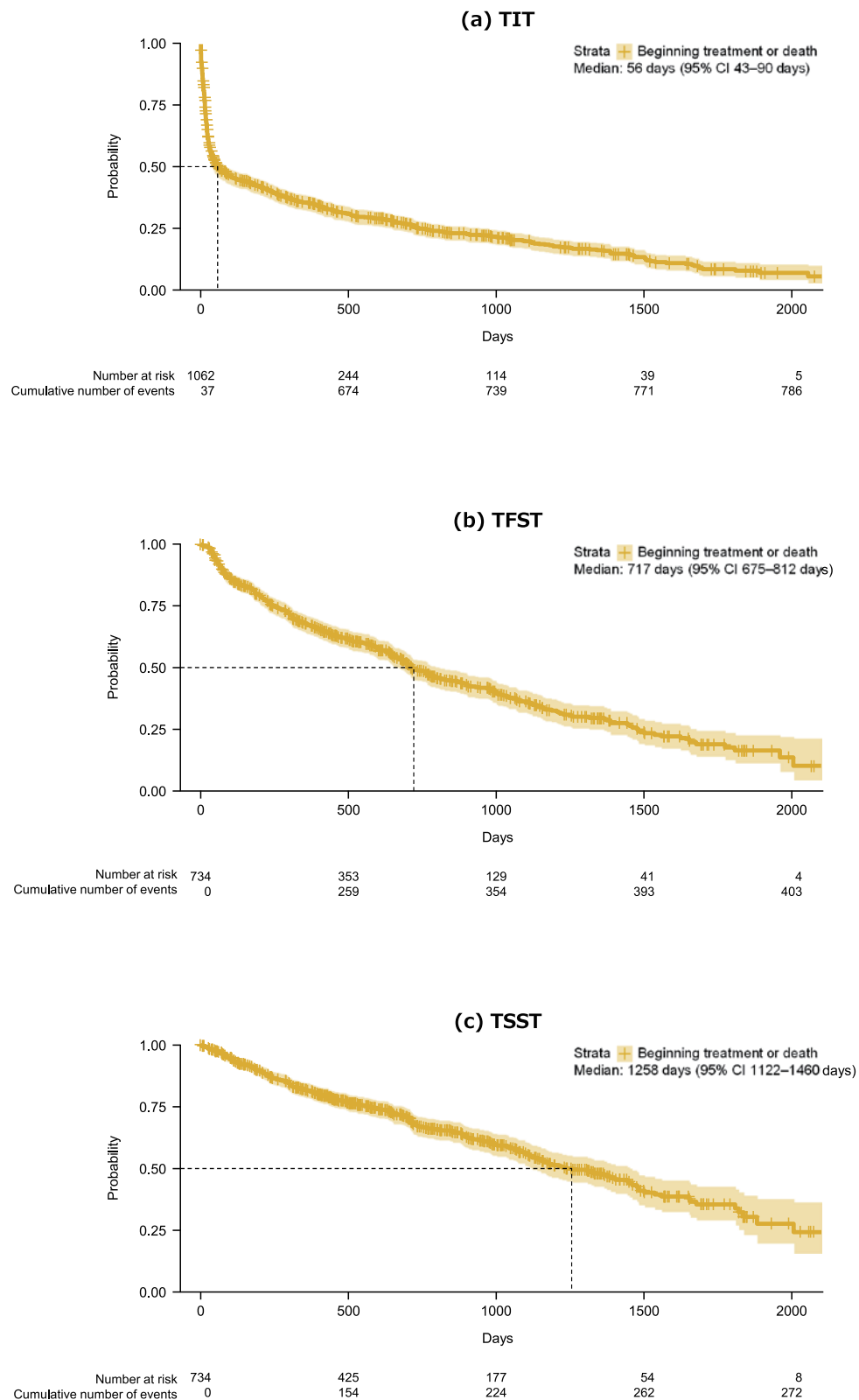


Supplementary Materials

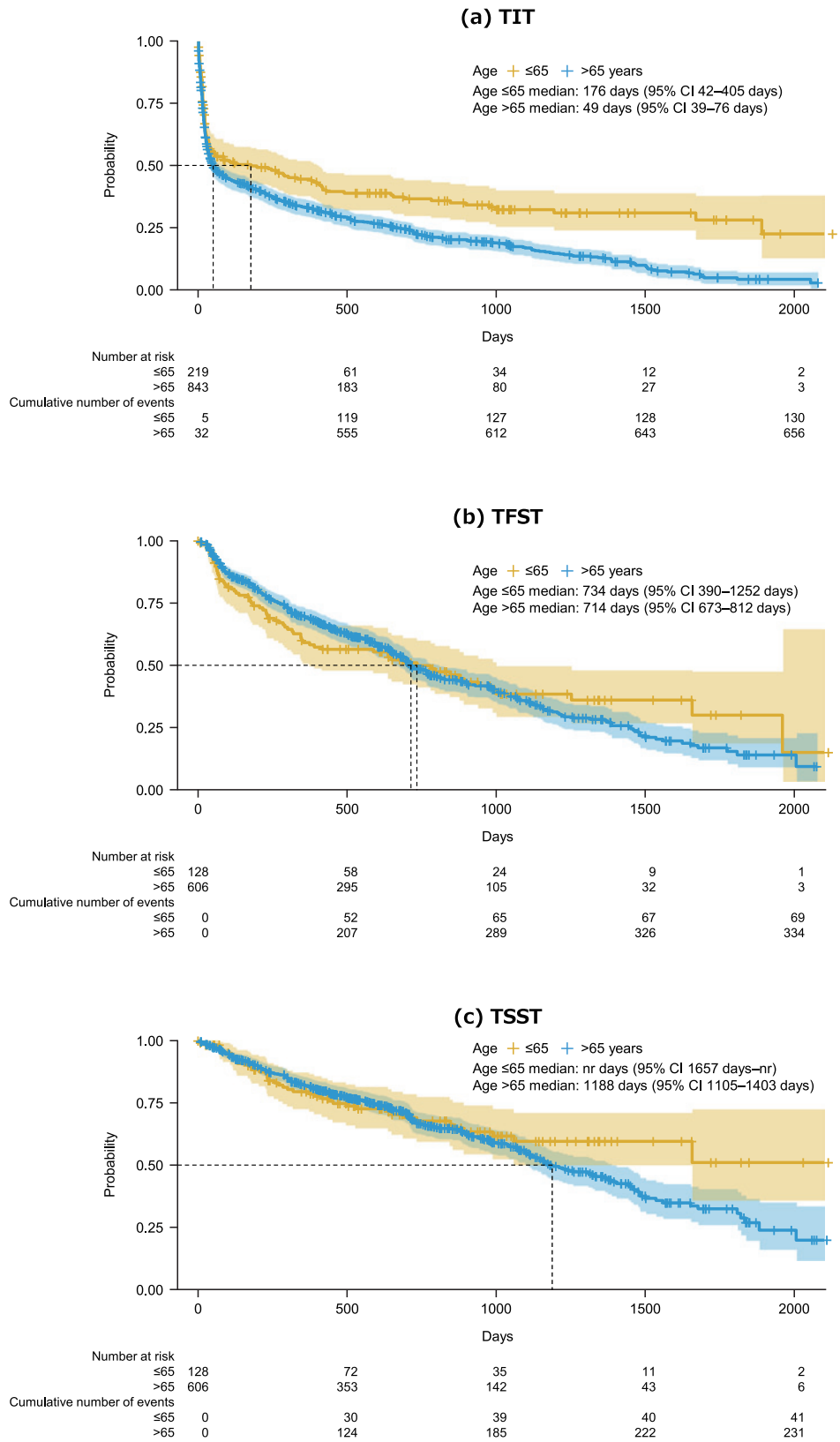
Supplementary Table S1. Treatments prescribed to $\geq 2\%$ of patients with MCL by treatment line

First-line treatment N = 802		Second-line treatment N = 408		Third-line treatment N = 213	
BR	223 (27.8%)	BR	77 (18.9%)	BR	29 (13.6%)
R-CHOP	125 (15.6%)	Ibrutinib	41 (10.0%)	Ibrutinib	26 (12.2%)
R-THP-COP	52 (6.5%)	B	26 (6.4%)	R	12 (5.6%)
VR-CAP	47 (5.9%)	Etoposide (VP16)	14 (3.4%)	B	8 (3.8%)
R	41 (5.1%)	Ibritumomab tiuxetan	14 (3.4%)	R-ICE	5 (2.3%)
R-Hyper-CVAD/MA	34 (4.2%)	R-CHOP	12 (2.9%)		
Ibrutinib	20 (2.5%)	MEAM	11 (2.7%)		
B	19 (2.4%)	R-Hyper-CVAD/MA	10 (2.5%)		
		VR-CAP	10 (2.5%)		
		CHASER	9 (2.2%)		
		MA	8 (2.0%)		

B, bendamustine; R, rituximab; CHOP, cyclophosphamide/doxorubicin/vincristine/prednisolone; VR-CAP, bortezomib/rituximab/cyclophosphamide/doxorubicin/prednisolone; THP, tetrahydropyranil-adriamycin; COP, cyclophosphamide/vincristine/prednisolone; hyper-CVAD, hyperfractionated cyclophosphamide/vincristine/doxorubicin/dexamethasone; MEAM, ranimustine/etoposide/cytarabine/melphalan; CHASER, cyclophosphamide/cytarabine/dexamethasone/etoposide/rituximab; MA, methotrexate/cytarabine; ICE, ifosfamide/carboplatin/etoposide



Supplementary Fig. S1. Kaplan–Meier plots of TIT (a), TFST (b), and TSST (c) in patients who did not undergo stem cell transplantation during the follow-up period. TIT was calculated as the time from the index date (date of first MCL diagnosis) to the first prescribed antineoplastic treatment. TFST and TSST were calculated as the time from the first prescription to the prescription of second-line (TFST) or third-line (TSST) treatments. TIT, time to initial (i.e., first-line) treatment; TFST, time to first-subsequent (i.e., second-line) treatment; TSST, time to second-subsequent (i.e., third-line) treatment



Supplementary Fig. S2. Kaplan–Meier plots of TIT (*a*), TFST (*b*), and TSST (*c*) in patients who did not undergo stem cell transplantation during the follow-up period stratified by age at the index date (≤ 65 or > 65 years). TIT was calculated as the time from the index date (date of first MCL diagnosis) to the first prescribed antineoplastic treatment. TFST and TSST were calculated as the time from the first prescription to the prescription of second-line (TFST) or third-line (TSST) treatments. TIT, time to initial (i.e., first-line) treatment; TFST, time to first-subsequent (i.e., second-line) treatment; TSST, time to second-subsequent (i.e., third-line) treatment