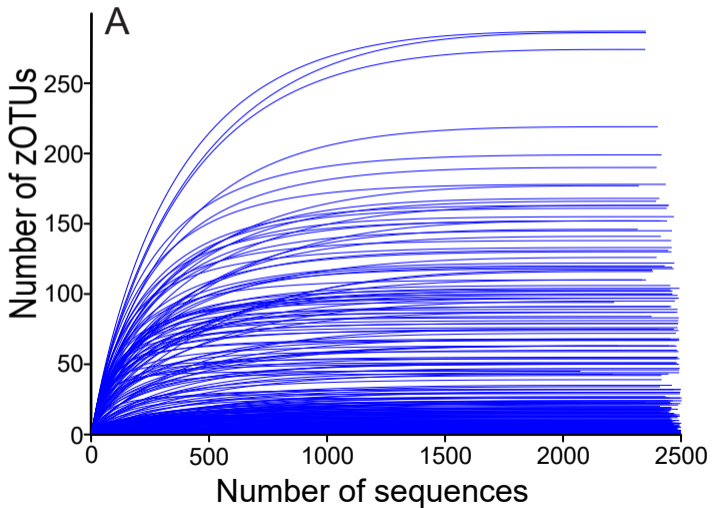


Figure S1

Bacteria



Fungi

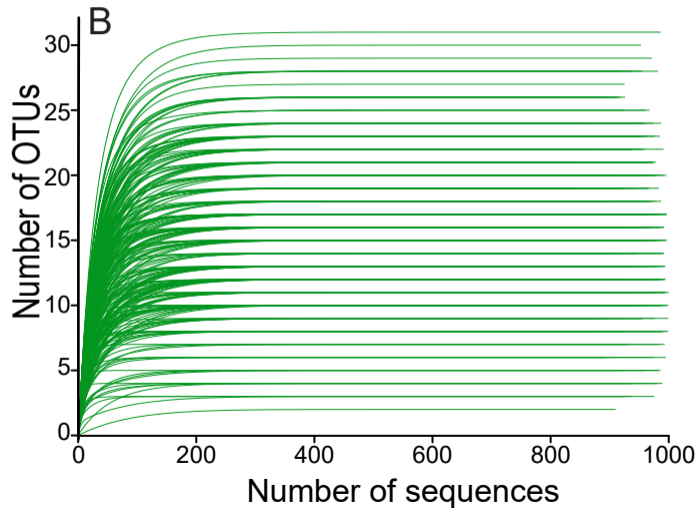


Figure S2

	Field-collected						Lab-reared					
	Caterpillars				Larvae		Caterpillars				Larvae	
	H-E	P-E	H-I	P-I	E	I	H-E	P-E	H-I	P-I	E	I
<i>Alternaria</i>	13.3	9.5	6.3	9.2	10.0	7.2	26.5	22.5	13.5	9.8	3.2	5.7
<i>Alternaria</i>	24.7	17.6	24.7	12.0	9.8	6.6	3.3	4.8	7.1	7.4	5.2	7.6
<i>Sporobolomyces</i>	14.2	19.7	11.6	13.0	5.5	5.9	1.0	2.6	3.2	6.6	6.3	10.1
<i>Exophiala</i>			<1.0	1.8	1.0	4.8	<1.0	<1.0	<1.0	<1.0	2.0	<1.0
<i>Mucor</i>	2.6	1.3	4.2	5.2	2.8	3.1	<1.0	<1.0	1.7	1.4	1.4	1.1
<i>Cladosporium</i>	2.5	3.1	2.8	1.6	<1.0	1.8	7.7	1.8	4.6	<1.0		<1.0
<i>Malassezia</i>	<1.0	<1.0	1.4	1.2	3.3	3.9	<1.0	4.0	1.7	7.6	5.7	3.7
<i>Debaryomyces</i>	1.2	<1.0	<1.0	1.6	3.5	3.9	1.1	1.3	1.1	3.1	3.0	2.0
<i>Xylodon</i>	<1.0	<1.0	<1.0	<1.0	<1.0	2.1	<1.0	<1.0	<1.0	2.0	2.8	4.1
<i>Trametes</i>	<1.0	<1.0	<1.0	<1.0	1.9	3.5	<1.0	<1.0	1.1	2.5	2.8	4.1
<i>Stemphylium</i>	1.3	1.3	<1.0	<1.0	<1.0		2.4	<1.0	5.1	<1.0	<1.0	<1.0
<i>Aureobasidium</i>	1.3	2.5	<1.0	<1.0	<1.0	<1.0	<1.0	<1.0	<1.0	<1.0	<1.0	<1.0
<i>Geosmithia</i>	<1.0		<1.0		1.2	1.2	5.1	1.5	2.5	1.5	1.0	<1.0
<i>Filobasidium</i>	2.7	4.4	2.2	2.4	1.4	1.4	<1.0	1.1	<1.0	1.5	1.5	2.2
<i>Dissoconium</i> (98.8%)				1.6			<1.0	<1.0	<1.0			
<i>Cystofilobasidium</i>	<1.0	8.2	2.3	4.5	2.1	<1.0	<1.0	<1.0	2.0	1.5	1.2	3.9
<i>Ganoderma</i>	<1.0	<1.0	<1.0	<1.0	1.1	<1.0	<1.0		<1.0	<1.0	<1.0	
<i>Clitocybe</i>	<1.0	<1.0	<1.0	<1.0	4.1	<1.0	<1.0	<1.0	<1.0	<1.0	<1.0	<1.0
Pleosporales			<1.0		2.4	<1.0						<1.0
<i>Pyrenophora</i>	1.3	2.1	1.2	<1.0	<1.0		<1.0		<1.0		<1.0	<1.0
<i>Alternaria</i>	<1.0	1.2	<1.0	1.2	<1.0	<1.0	<1.0	<1.0	<1.0	<1.0	<1.0	<1.0
<i>Aspergillus</i>			<1.0		<1.0	<1.0	1.5	1.0	3.0	1.0	<1.0	
<i>Gibellulopsis</i>	1.4	<1.0	1.1	2.4	1.4	<1.0	2.3	4.8	4.1	1.2	<1.0	1.6
<i>Armillaria</i>				<1.0	<1.0	1.2	<1.0	5.2		<1.0		
<i>Plicaturopsis</i>				<1.0	<1.0	<1.0	<1.0	3.9	<1.0	2.6	<1.0	<1.0
<i>Peniophora</i>	<1.0	<1.0	<1.0	<1.0	1.1	<1.0	<1.0	<1.0	<1.0	<1.0		<1.0
<i>Alternaria</i>	<1.0	<1.0	1.1	<1.0								
<i>Pyrenophora</i>	1.7	<1.0		<1.0		<1.0						
<i>Filobasidium</i>	2.1	2.3	1.1	1.0	<1.0	1.1		1.1	<1.0	<1.0	2.1	<1.0
<i>Thelebolus</i>	1.1		<1.0	<1.0	<1.0			<1.0			<1.0	
<i>Vishniacozyma</i> (98.7%)	1.1	2.0	<1.0	2.4	1.0	1.4	<1.0	<1.0	<1.0	1.4	1.2	2.0
<i>Alternaria</i>	<1.0		<1.0	<1.0	1.5	<1.0		<1.0	<1.0	<1.0	<1.0	<1.0
<i>Neodevriesia</i>				1.9								
<i>Aspergillus</i>	<1.0		1.7	<1.0	3.8	2.6	1.1	1.2	1.7	<1.0	4.1	<1.0
<i>Cladosporium</i>					<1.0	<1.0	2.8	<1.0	1.4	<1.0		<1.0
<i>Itersonilia</i>	<1.0	<1.0	1.3	1.3	2.4	<1.0	<1.0	1.2	<1.0	1.5	1.5	5.2
<i>Epicoccum</i>	2.0	1.1	1.8	1.4	<1.0	1.0	2.9	2.5	<1.0	<1.0	<1.0	<1.0
<i>Aspergillus</i>					<1.0				<1.0	5.6	<1.0	
<i>(Globo)fomes</i>	<1.0	<1.0	<1.0	<1.0	<1.0	<1.0				<1.0	1.0	<1.0
<i>Resinicium</i>	<1.0		<1.0		<1.0		<1.0		<1.0	<1.0	1.6	<1.0
<i>Gymnostellatospora</i>		<1.0	<1.0	<1.0	1.0	<1.0	<1.0	<1.0	<1.0	1.1		<1.0
<i>Exophiala</i>			<1.0	1.1	<1.0	<1.0		<1.0	<1.0	<1.0		
Dothideomycetes	1.7								<1.0			
<i>Mucor</i>		<1.0		1.3	<1.0			<1.0				
Hypocreales	<1.0	<1.0		<1.0	<1.0	1.8	<1.0	1.3	<1.0	<1.0	<1.0	<1.0
<i>Ceriporiopsis</i>							1.3		<1.0			
<i>Puccinia</i>	<1.0	<1.0	1.0	2.3		<1.0	<1.0	<1.0	<1.0			
Tremellaceae (98.7%)	<1.0	<1.0	1.7	1.2	<1.0	<1.0		<1.0	<1.0	<1.0	<1.0	1.1
<i>Cystofilobasidium</i>											4.5	
<i>Filobasidium</i>	<1.0	1.7	<1.0	<1.0	<1.0	<1.0	<1.0	<1.0		<1.0	<1.0	<1.0
<i>Plectosphaerella</i> (98.8%)	<1.0	<1.0	<1.0	<1.0	<1.0	<1.0	1.4			<1.0	<1.0	<1.0
<i>Peniophora</i>	<1.0	<1.0		<1.0	<1.0	<1.0	<1.0	1.2	<1.0	1.4	1.3	<1.0
<i>Malassezia</i>			<1.0	<1.0	2.5		<1.0					
<i>Fusarium</i> (94.4%)	1.0	1.9	<1.0	<1.0		<1.0	<1.0			<1.0		
<i>Polyporus</i>								2.5		<1.0		
<i>Xylodon</i>		<1.0					<1.0			1.9		<1.0
<i>Hyphodontia</i>				1.3	<1.0							
<i>Acremonium</i>			<1.0				1.2		1.2			1.7
<i>Meyerozyma</i>					<1.0	<1.0	<1.0	<1.0	<1.0	<1.0		1.1
<i>Gibellulopsis</i> (98.8%)	1.0	<1.0	<1.0	<1.0	1.0	<1.0	<1.0	2.8	<1.0	<1.0	<1.0	<1.0
<i>Malassezia</i>	<1.0	<1.0		<1.0				<1.0	<1.0	<1.0		1.1
<i>Itersonilia</i>	<1.0	<1.0	<1.0	<1.0	<1.0	<1.0	<1.0	<1.0	1.0	1.6	<1.0	<1.0
<i>Melampsora</i>	<1.0	<1.0							1.0		<1.0	1.2
<i>Naganishia</i>	<1.0		<1.0	<1.0	1.1	<1.0				<1.0		1.0
<i>Rhodotorula</i>	<1.0				<1.0	<1.0	1.6	<1.0	<1.0	<1.0	3.5	<1.0
<i>Rhodotorula</i>						<1.0	<1.0	<1.0	2.5			
<i>Heterobasidion</i>			<1.0								1.9	
<i>Anthracosystis</i>							<1.0	1.3	<1.0			<1.0
<i>Mucor</i>	<1.0		<1.0				2.9	2.6	2.5	<1.0		
<i>Physcia</i>	<1.0	<1.0		<1.0		<1.0	<1.0			1.6		<1.0
<i>Taphrina</i>	<1.0							1.1	<1.0	<1.0		
Pleosporales		<1.0	<1.0		1.3	<1.0		<1.0		<1.0	<1.0	<1.0
<i>Cystofilobasidium</i>	<1.0	1.6	<1.0	<1.0	<1.0				<1.0	<1.0		
<i>Fusarium</i>	2.1	<1.0	<1.0									<1.0
<i>Cyberlindnera</i>						2.5			<1.0			
<i>Postia</i>						1.3						
<i>Dioszegia</i>	<1.0			1.5								
<i>Beauveria</i>	<1.0							<1.0	<1.0		<1.0	1.5
<i>Aspergillus</i>	<1.0		2.0		<1.0							
<i>Cystobasidium</i>			<1.0		<1.0	<1.0	<1.0			1.2	<1.0	
<i>Phialocephala</i> (98.2%)								1.8				
<i>Cystobasidium</i>						<1.0	<1.0	<1.0	1.3		<1.0	
<i>Phaeosphaeria</i>			1.3									
<i>Exidia</i> (98.8%)							<1.0					1.0
<i>Fomes</i>		<1.0							<1.0	1.3	2.2	1.9
<i>Penicillium</i> (98.8%)			<1.0		<1.0	<1.0	1.3	1.5	1.8	1.2	<1.0	<1.0

Prevalence (%) 100 80 60 40 20 0