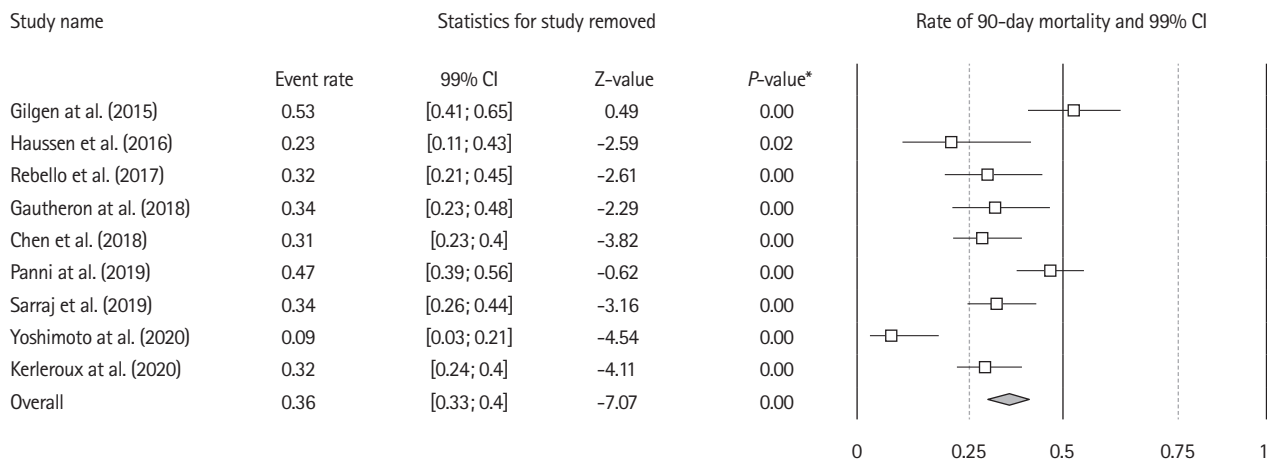


**Supplementary Figure 5.** Forest plot of the rates of patients with 90-day unfavorable outcome after mechanical thrombectomy with subgroup analysis per study imaging selection modality. Unfavorable outcome=modified Rankin Scale of 3 or more at day 90. CI, confidence interval; CTP, computed tomography-perfusion; MRI, magnetic resonance imaging. \**P*-value for heterogeneity.



**Supplementary Figure 6.** Forest plot for the rates of 90-day mortality. CI, confidence interval. \**P*-value for heterogeneity.