

Figure S1. Immunohistochemically stained tissues demonstrating the distribution of CSPGs in the spinal cord at 8 weeks post-trauma. Sections were taken from the injured site (+0 mm) and 3 and 5 mm rostral (+) and caudal (-) to the epicenter. The images were captured using an inverted Olympus IX71 microscope (magnification, x400). Following MP+TT combination therapy, the expression of CSPGs was lower compared with the use of MP alone. MP, methylprednisolone; TT, treadmill training; SCI, spinal cord injury.

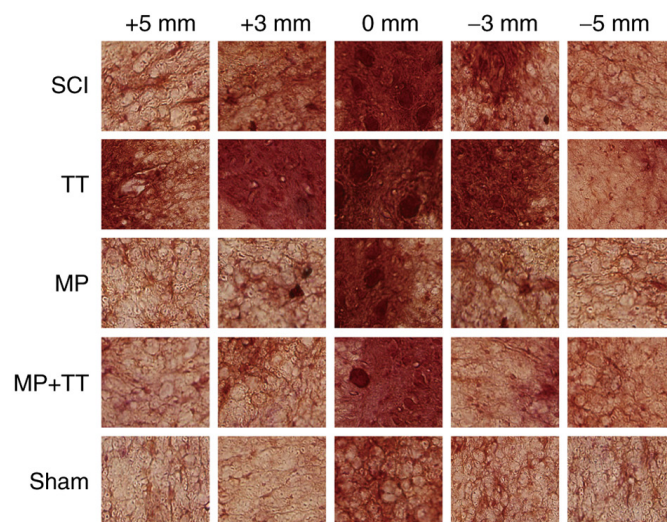


Figure S2. Immunohistochemically stained tissues demonstrating the distribution of NgR in the spinal cord at 8 weeks post-trauma. Sections were taken from the injured site (+0 mm) and 3 and 5 mm rostral (+) and caudal (-) to the epicenter. The images were captured using an inverted Olympus IX71 microscope (magnification, x400). The expression of NgR in the MP + TT group significantly lower compared with the MP group. MP, methylprednisolone; TT, treadmill training; SCI, spinal cord injury.

