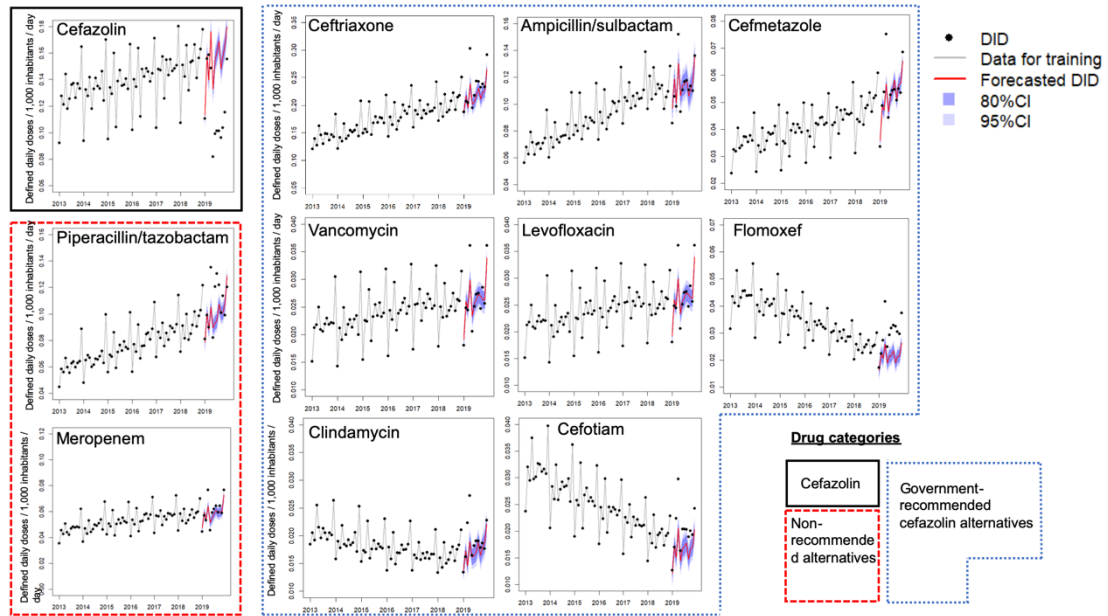


Supplementary materials

Supplementary Figure 1

Dot plots of actual and predicted DID values of antimicrobials

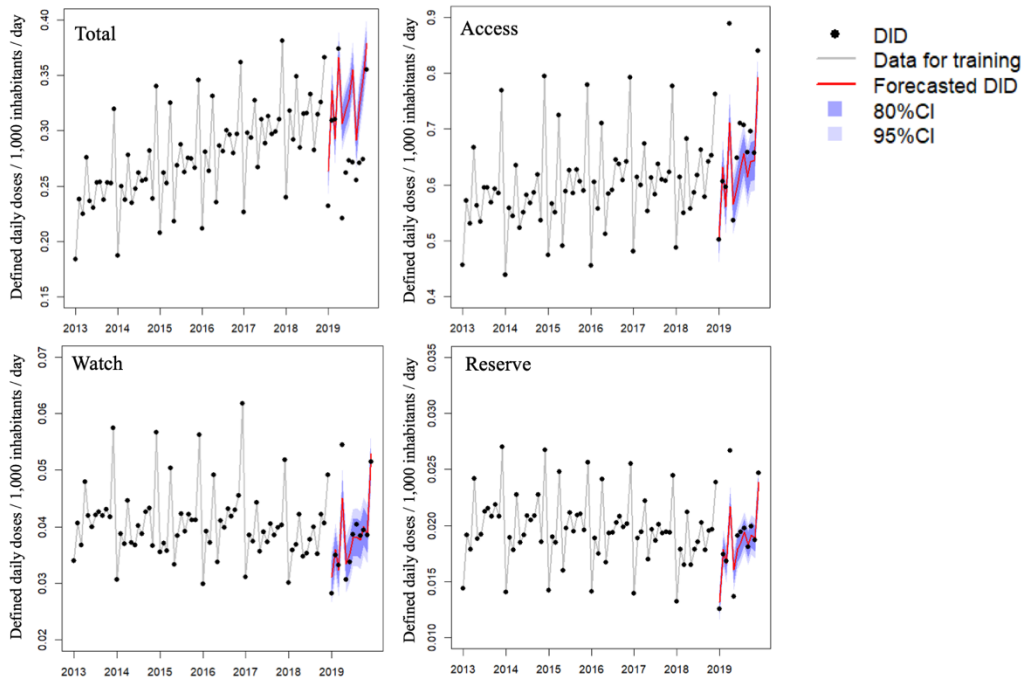


Monthly trends in dot plots of DID values are shown. Red lines represent predictions of DID values in 2019 generated by 2013–2018 data under the assumption of non-occurrence of the cefazolin shortage. Deep purple and light purple zones represent 80% and 95% confidence intervals.

Abbreviation: DID, defined daily doses/1,000 inhabitants/day. CI, confidence intervals.

Supplementary Figure 2

Dot plots of actual and predicted DID values of antimicrobials according to AWaRe classifications



Monthly trends in dot plots of DID values are shown. Red lines represent predictions of DID values in 2019 generated by 2013–2018 data under the assumption of non-occurrence of the cefazolin shortage. Deep purple and light purple zones represent 80% and 95% confidence intervals.

Abbreviation: DID, defined daily doses/1,000 inhabitants/day. CI, confidence intervals.