

Supplementary Online Content

Huang C, Liu H, Hu Y, et al; Chinese Laparoscopic Gastrointestinal Surgery Study (CLASS) Group. Laparoscopic vs open distal gastrectomy for locally advanced gastric cancer: five-year outcomes from the CLASS-01 randomized clinical trial. *JAMA Surg*. Published online October 20, 2021. doi:10.1001/jamasurg.2021.5104

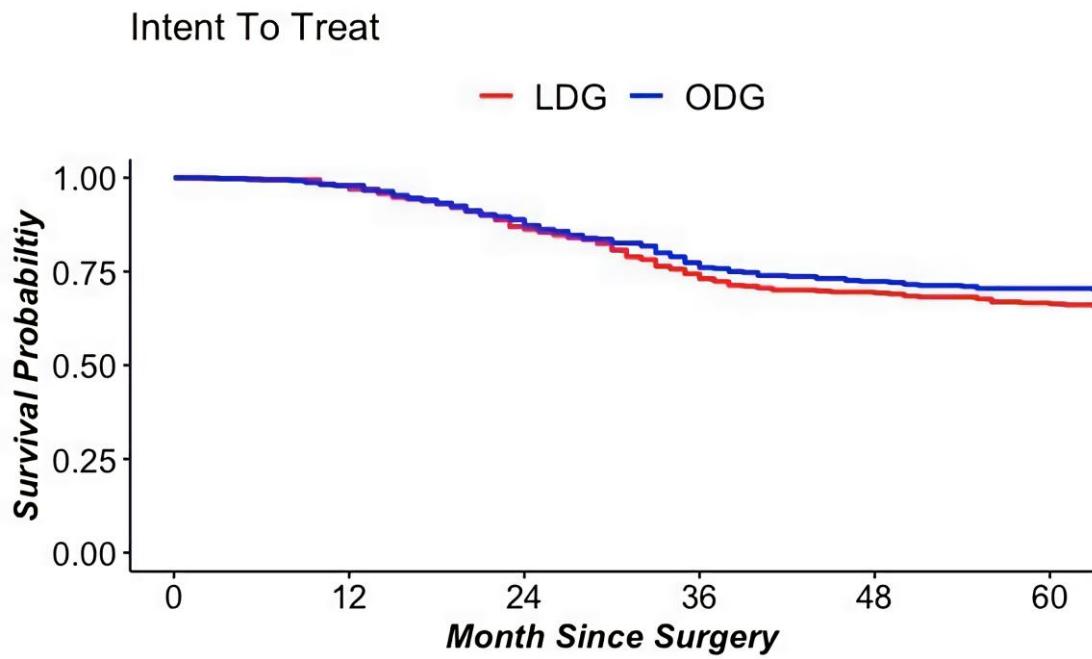
eFigure 1. Sensitivity Analysis of ITT Population

eFigure 2. Per-Protocol and As-Treated Analyses

eTable. Cause of Death

This supplementary material has been provided by the authors to give readers additional information about their work.

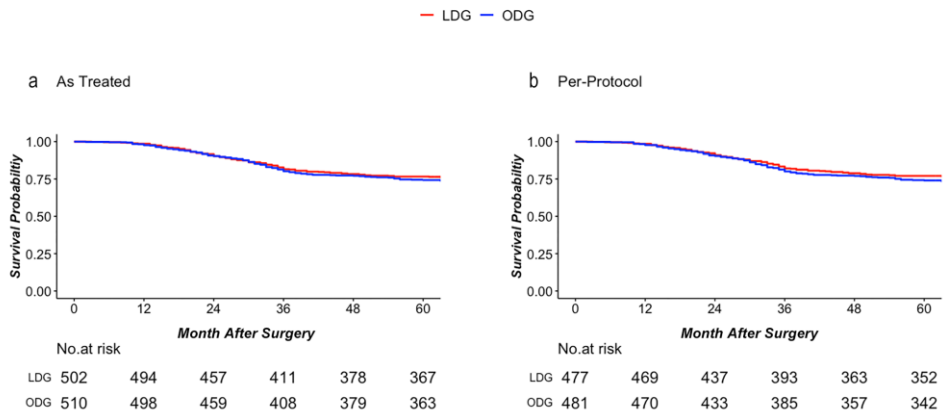
eFigure 1. Sensitivity Analysis of ITT Population



No.at risk

LDG	401	392	347	294	265	253
ODG	387	378	342	296	272	261

eFigure 2. Per-Protocol and As-Treated Analyses



eTable. Cause of Death

	Gastric Tumor Related	Other Tumor Related	Non-Tumor Related	Unknown	Accident	Missing Death Cause	Total
LDG	112 (39.2%)	8 (2.8%)	8 (2.8%)	16 (5.6%)	1 (0.4%)	7 (2.4%)	152
ODG	101 (35.3%)	4 (1.4%)	7 (2.4%)	16 (5.6%)	0 (0%)	6 (2.1%)	134
Total	213	12	15	32	1	13	286