

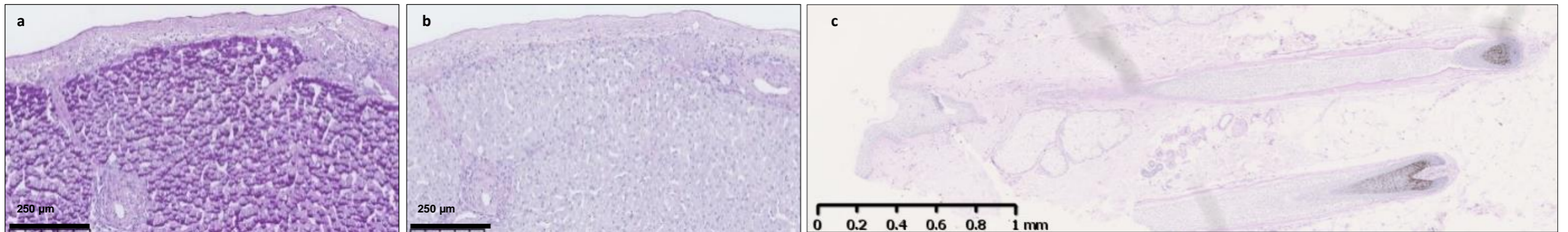
Supplementary figures

Human hair follicles operate an internal Cori cycle and modulate their growth via glycogen phosphorylase

Katarzyna Figlak¹, Greg Williams², Marta Bertolini³, Ralf Paus^{3,4,5} and Michael P Philpott^{1*}

¹Centre for Cell Biology and Cutaneous Research, Blizard Institute, Barts & The London School of Medicine and Dentistry, Queen Mary College University of London, UK; ²Farjo Hair Institute, London, UK; ³Monasterium Laboratory, Münster, Germany; ⁴Dr. Phillip Frost Department of Dermatology and Cutaneous Surgery, University of Miami Miller School of Medicine, Miami, FL, USA; ⁵Dermatology Research Centre, University of Manchester, and NIHR Biomedical Research Centre, Manchester, UK

Supplementary Figure 1

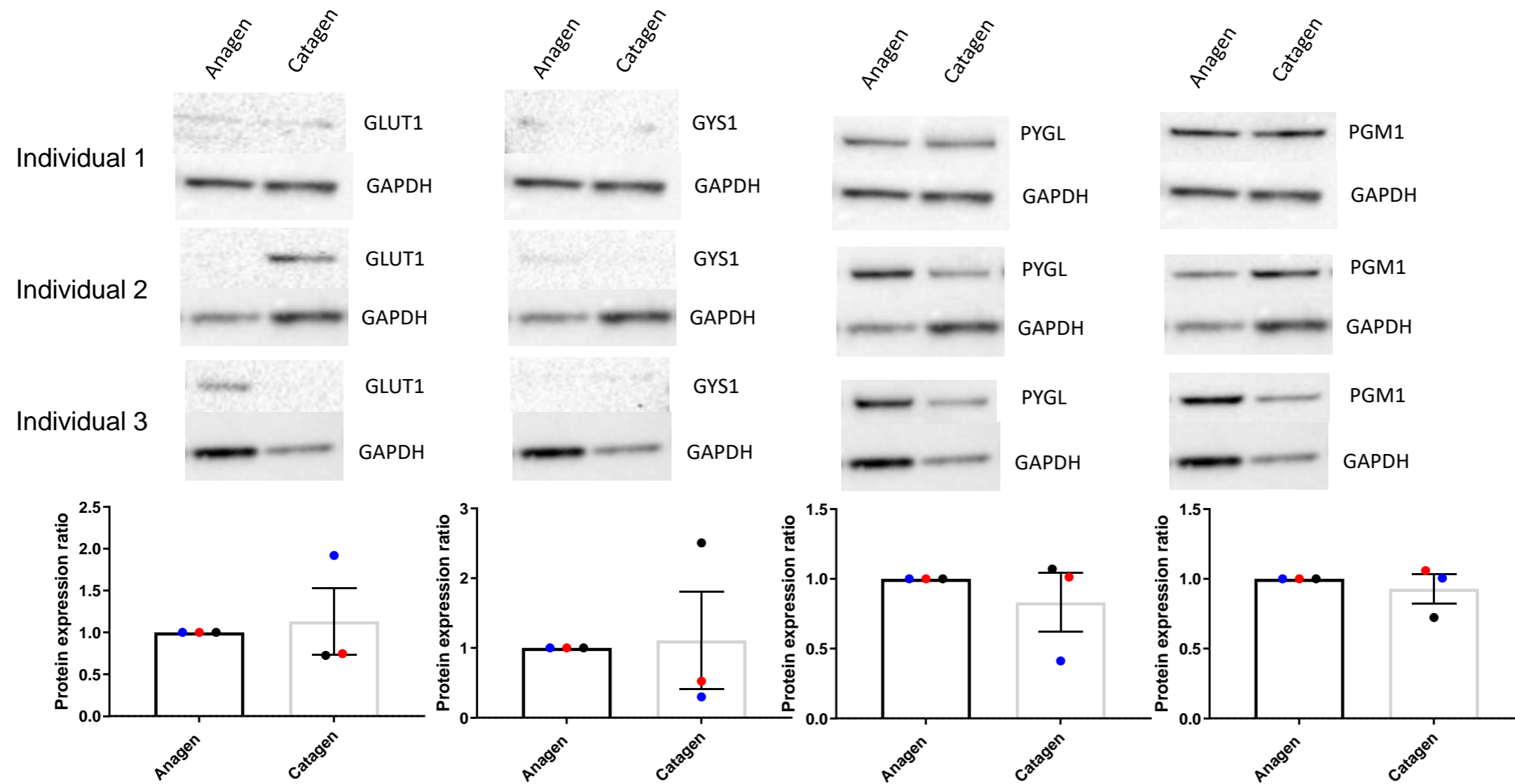


Supplementary Data Figure 1:

Supplement to Figure 1a-h.

Human liver was used as a positive control (a). Specificity of PAS staining for glycogen was shown by digestion of human liver (b) and scalp skin (c) with 0.5% porcine α -amylase (diastase).

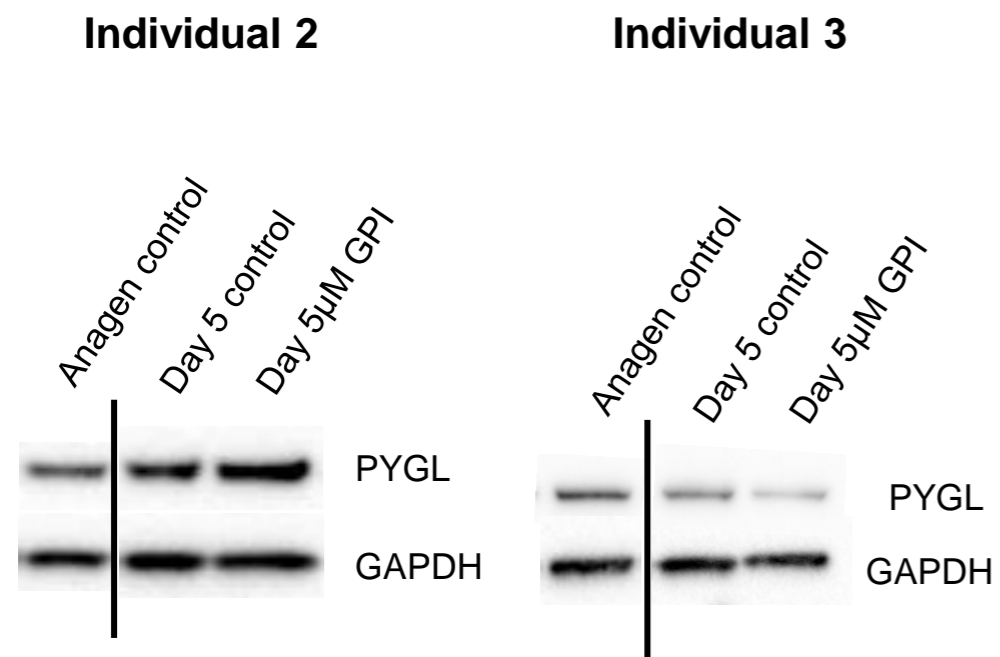
Supplementary Figure 2



Supplementary Data Figure 2:

Quantified ratios protein expression analysed by western blot and representative images from western blot analysis for GLUT1, GYS1, PYGL and PGM1. GAPDH was used as a loading control. Densitometry measurement carried out in ImageJ software, 3-4 HF's per sample, N=3 (paired two-tailed t-test).

Supplementary Figure 3



Supplementary Data Figure 3

Supplement to Figure 3f

Western Blot analysis of PYGL expression in HF lysates, 3-4 HF's per sample. GAPDH used as a loading control.