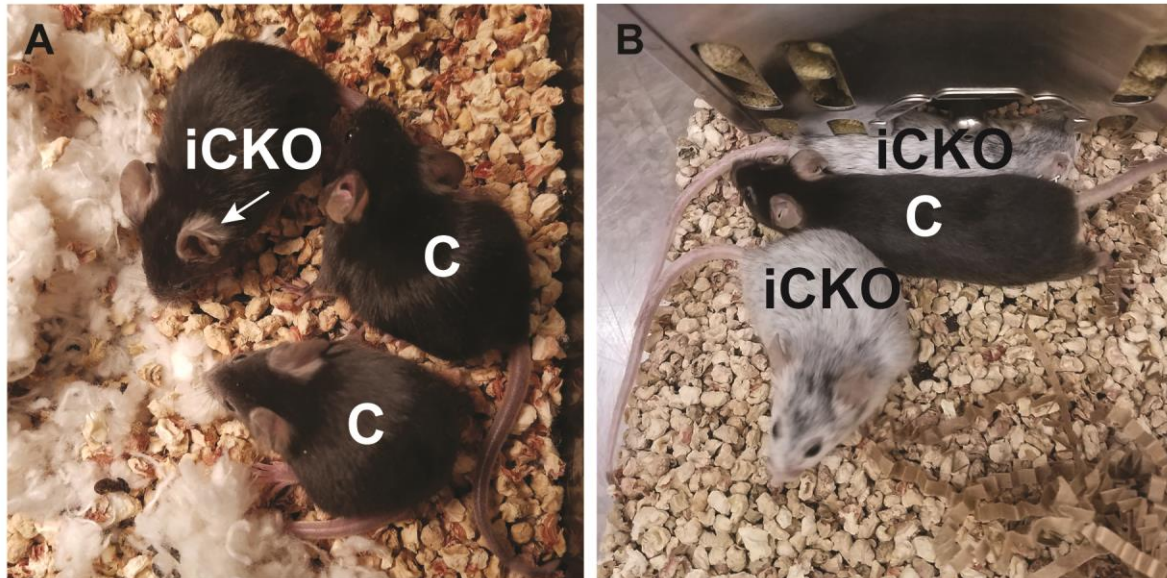


Supplemental information

***GJB2* gene therapy and conditional deletion reveal
developmental stage-dependent effects
on inner ear structure and function**

Jingying Guo, Xiaobo Ma, Jennifer M. Skidmore, Jelka Cimerman, Diane M. Prieskorn, Lisa A. Beyer, Donald L. Swiderski, David F. Dolan, Donna M. Martin, and Yehoash Raphael

Supplemental Information



Supplemental Fig. 1: *Sox10iCre^{ERT2};Gjb2^{flox/flox}* mice exhibit progressive coat color pigment abnormalities. (A) *Sox10iCre^{ERT2};Gjb2^{flox/flox}* mice (iCKO) and littermate control mice (C) injected with tamoxifen at P1 exhibited a silver coat color that was visible at 3 weeks of age as tufts behind the ear (arrow). (B) The silver coat color became more pronounced with age, as seen in 8 months old animals.