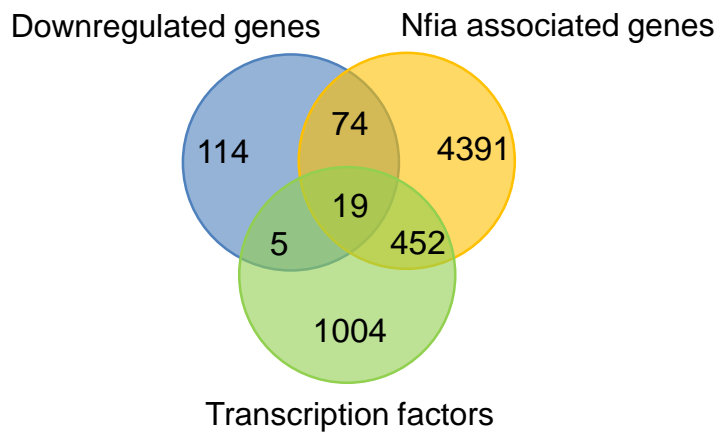


(A)



(B)

Gene	Fold change
Id4	0.488
Dlx6	0.490
Dlx5	0.496
Emx1	0.510
Fezf2	0.512
Dlx2	0.517
Sp9	0.547
Dlx1	0.557
Scrt2	0.576
Dmrta2	0.584
Zic3	0.596
Zic4	0.613
Pax6	0.618
Bcl11a	0.631
Arx	0.635
Zic1	0.638
Scrt1	0.642
Zscan2	0.651
Hes5	0.665

Figure S1

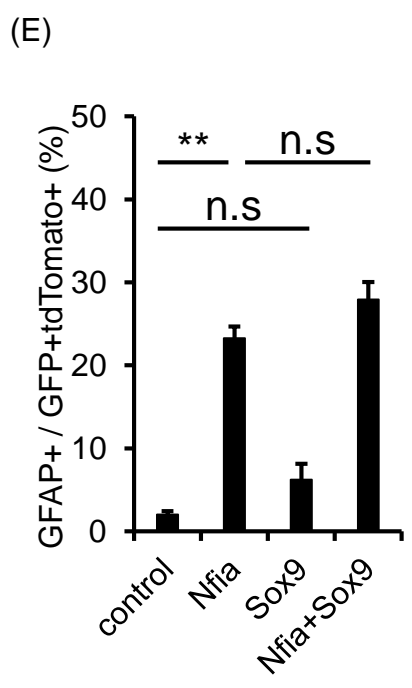
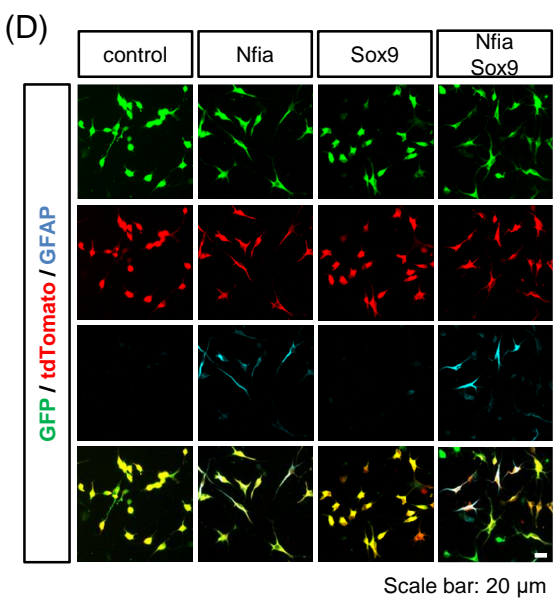
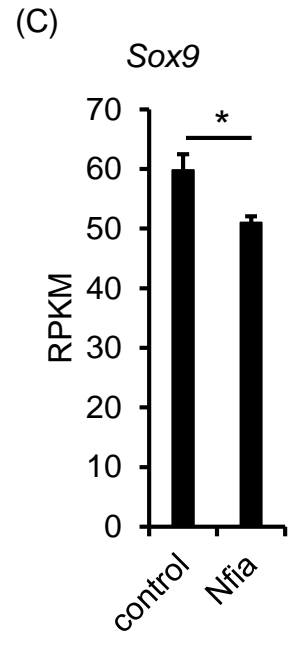
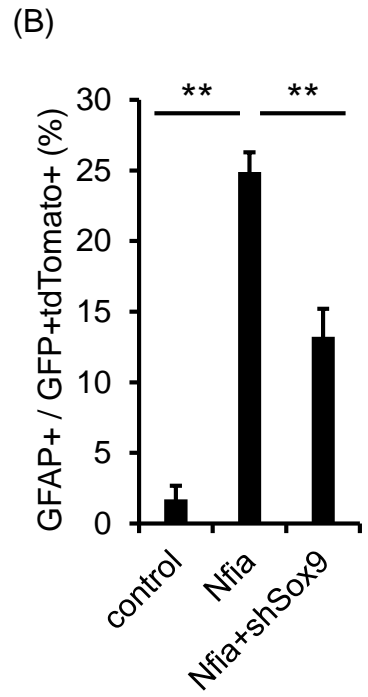
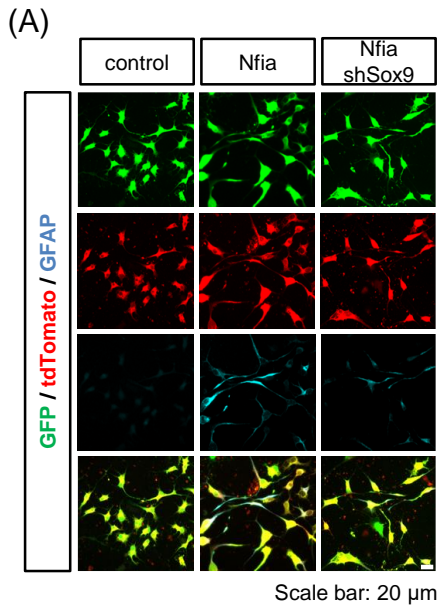


Figure S2

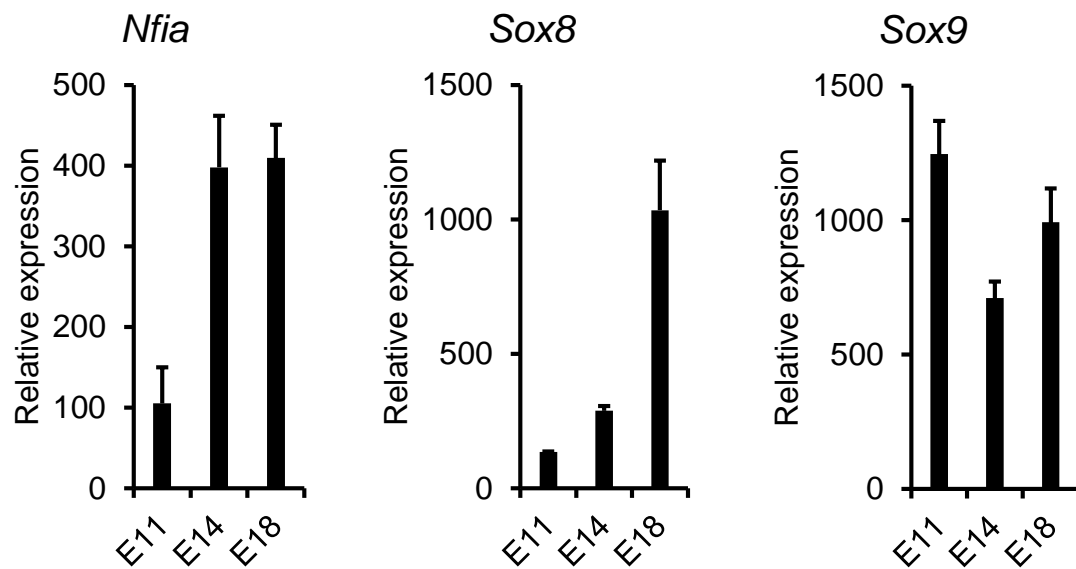


Figure S3