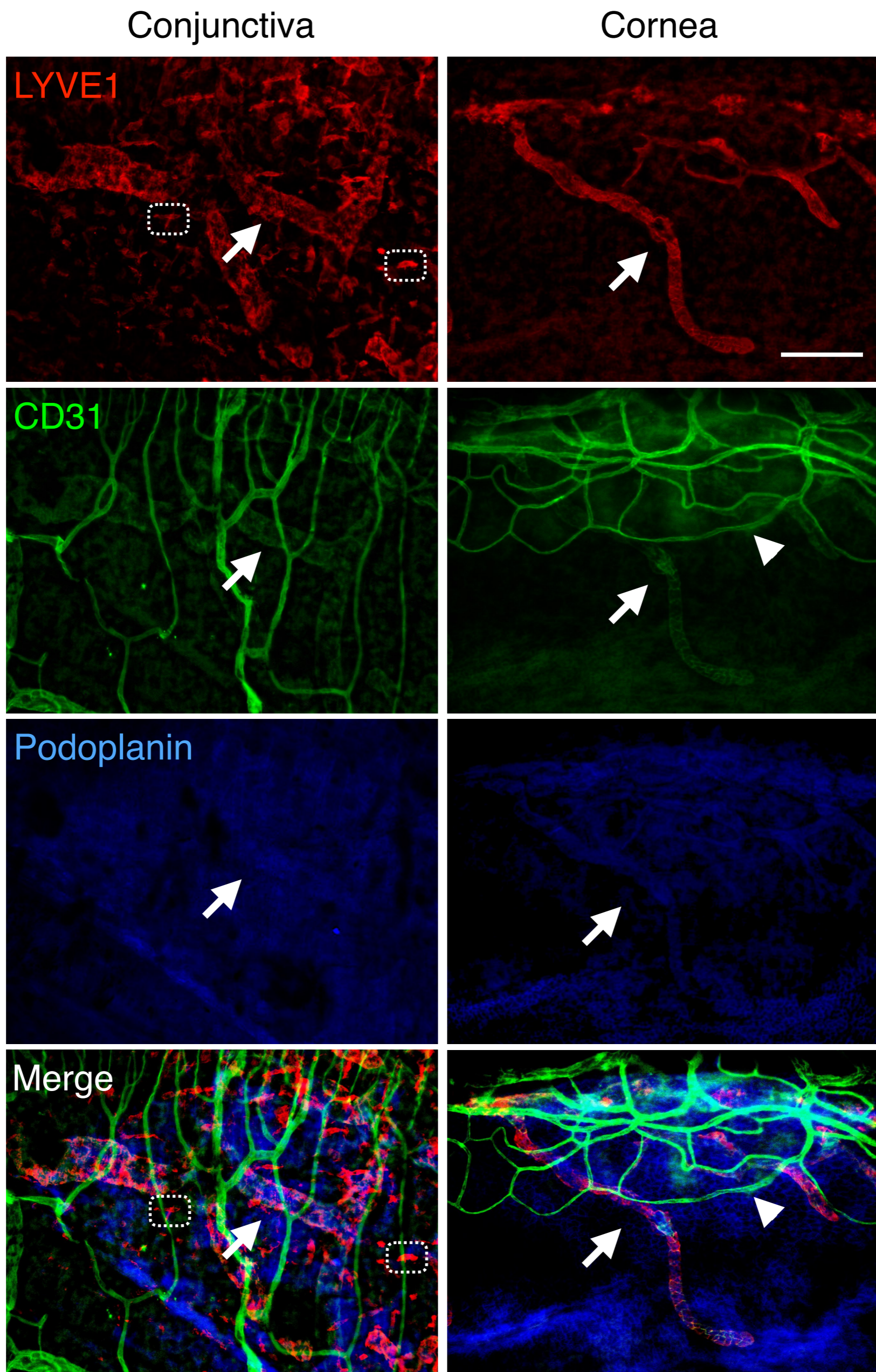
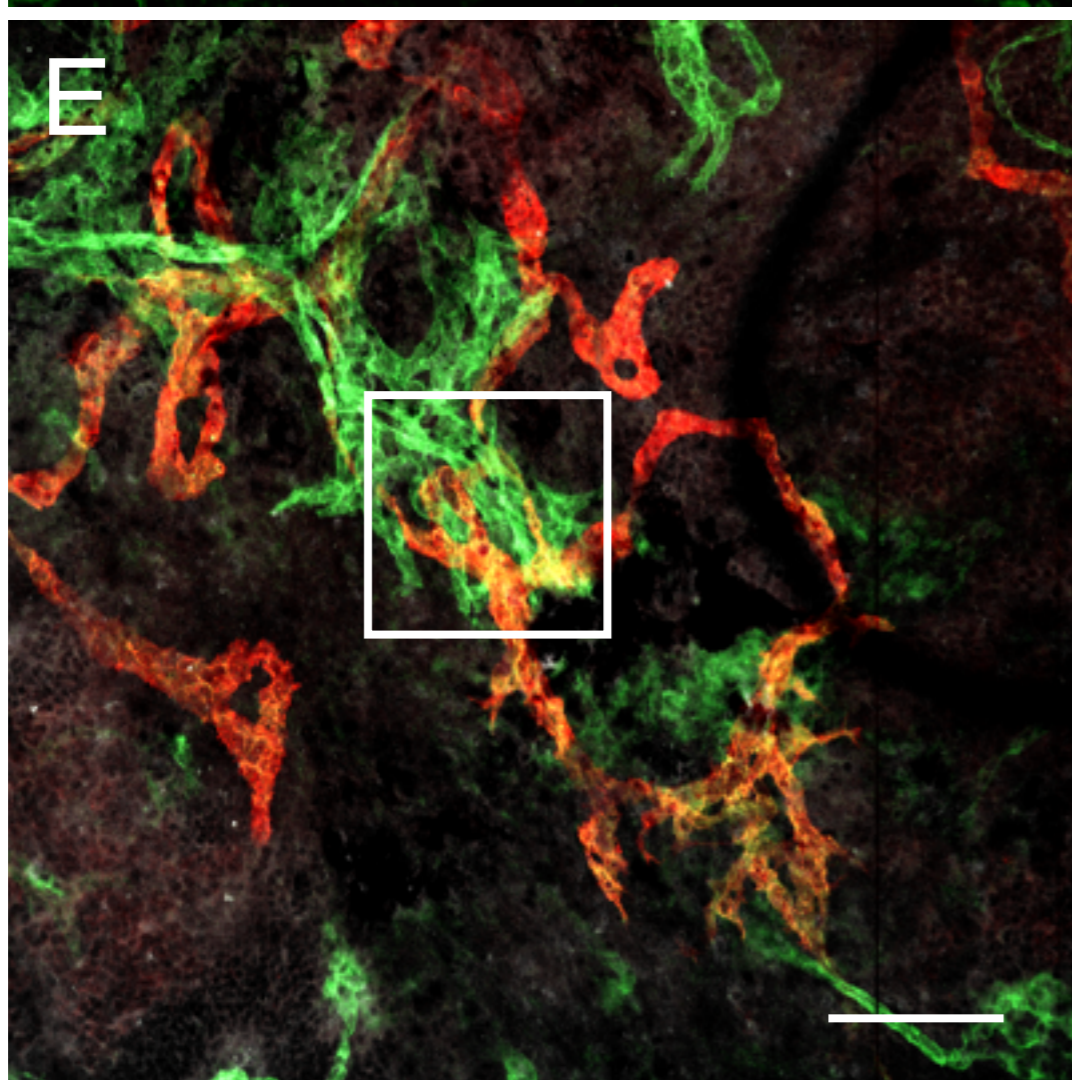
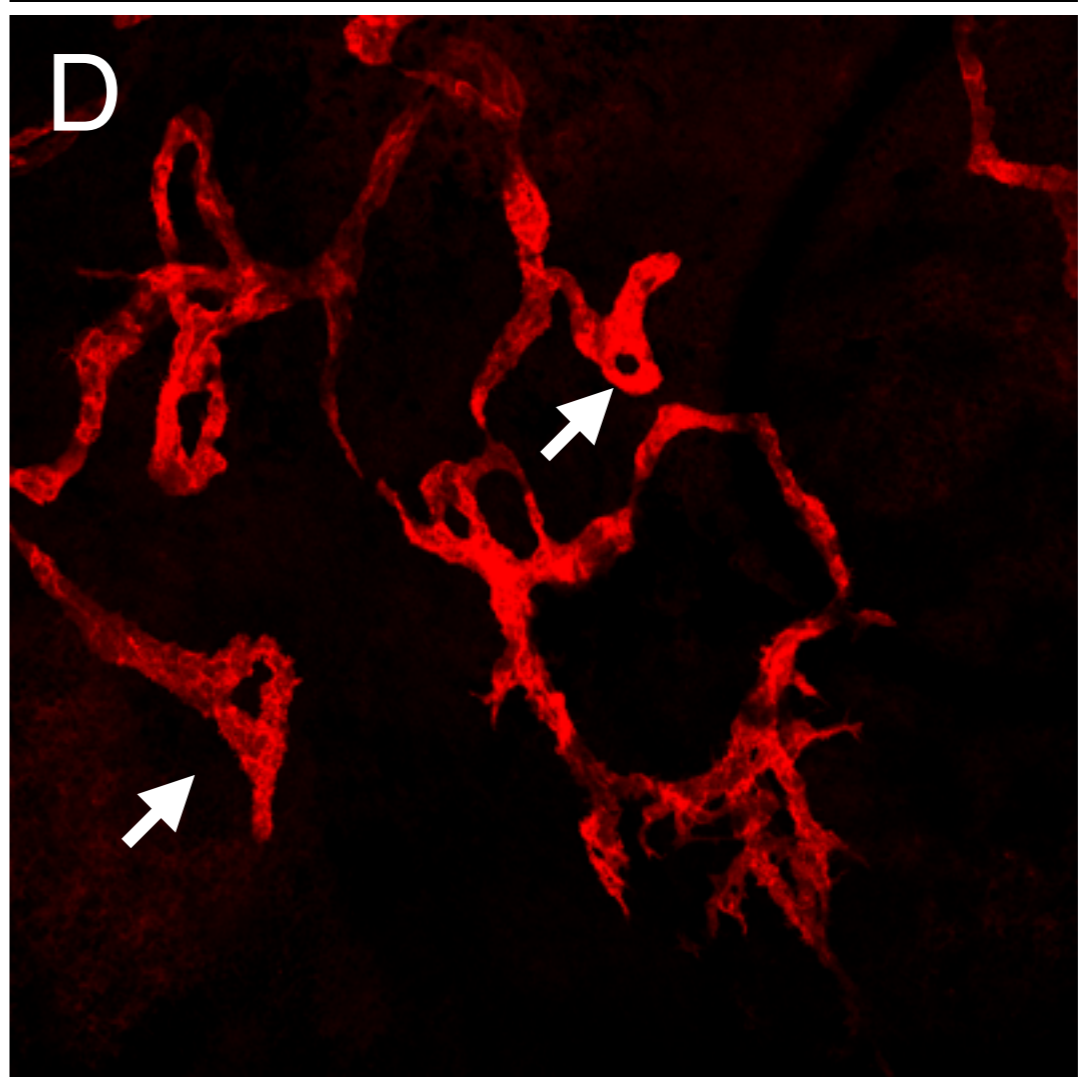
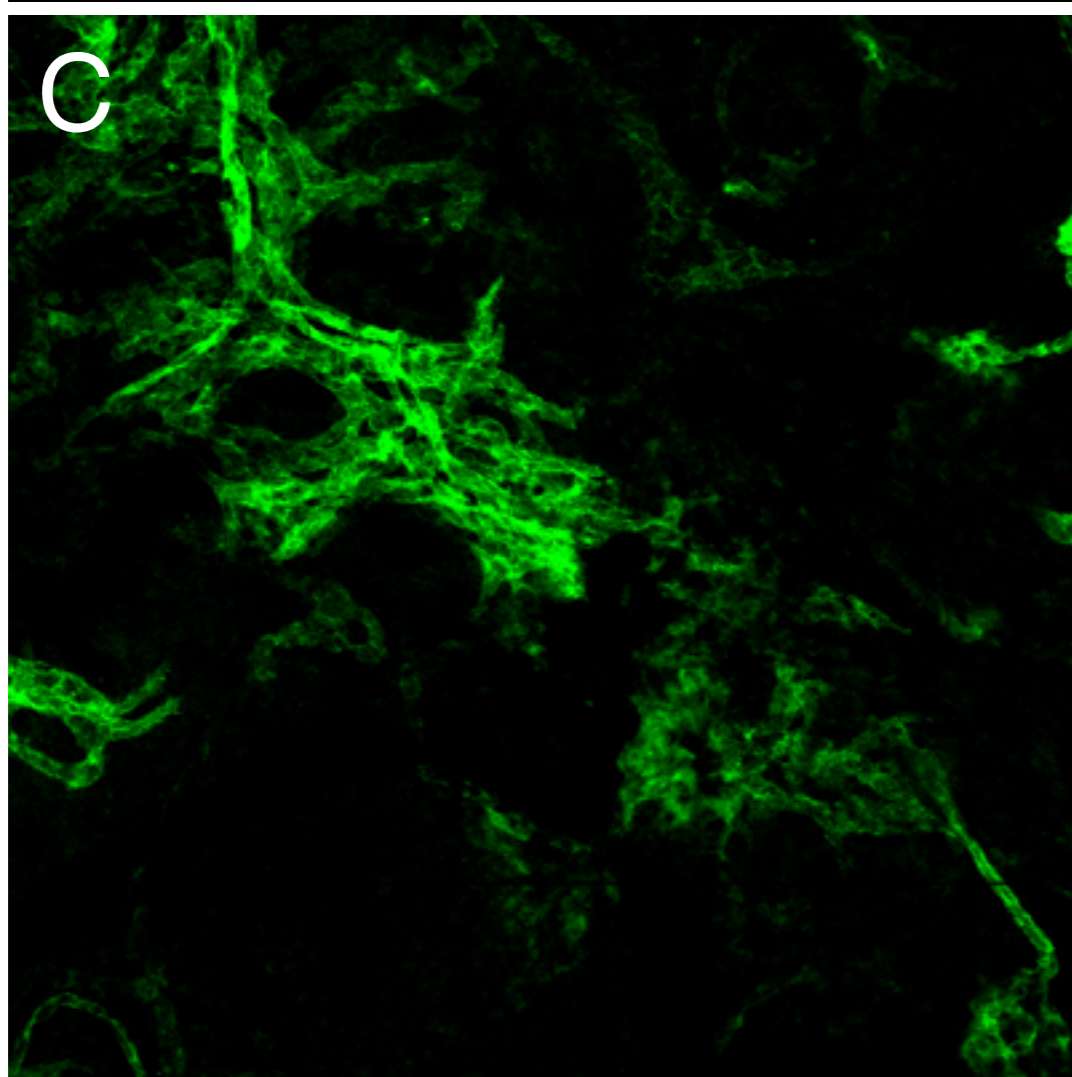
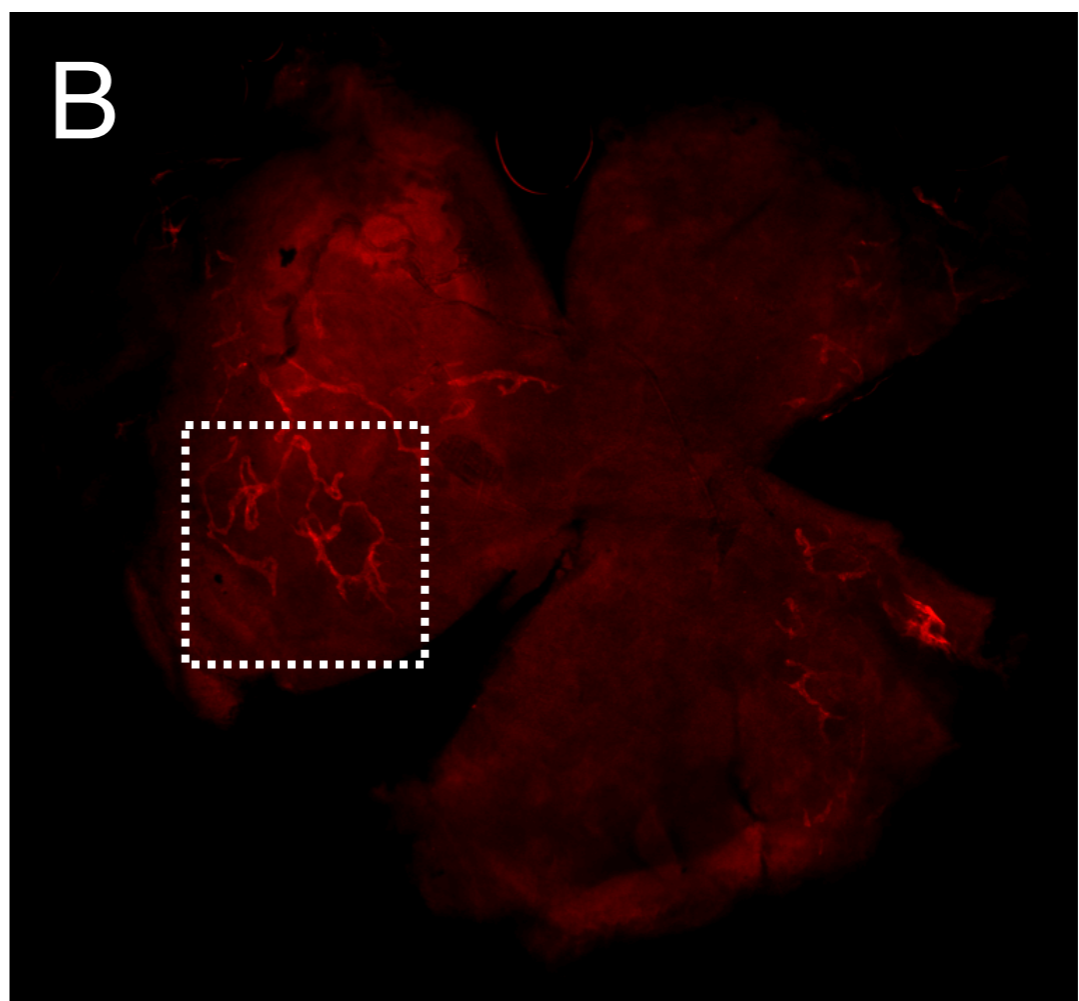
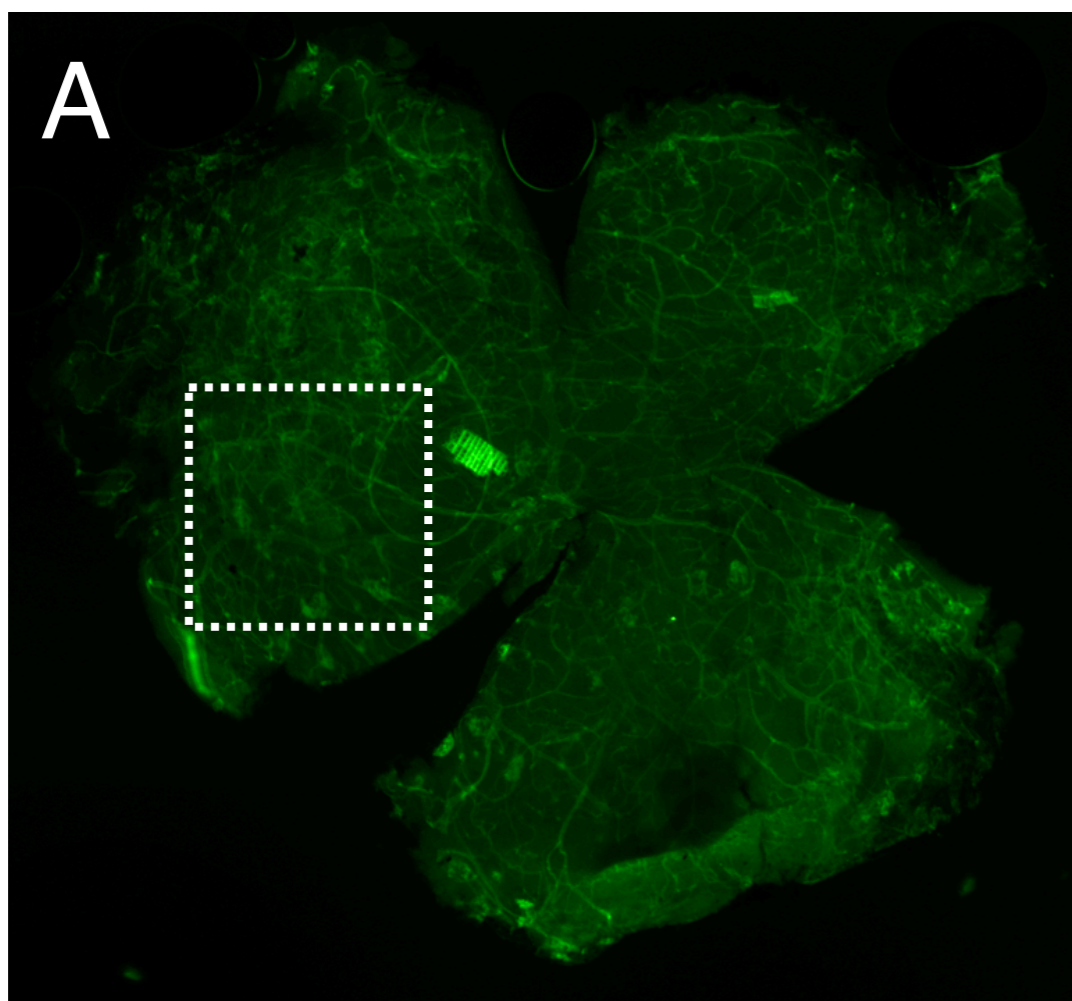


WT



Supplemental Figure 1

Supplemental Figure 1. Immunohistochemical Detection of Lymphatics in the Conjunctiva and Cornea. Representative images of flat-mounted conjunctiva and cornea from wild-type (WT) mice (7- to 8-week-old) with staining for Lyve1 (red), CD31 (green), and podoplanin (blue). Arrows and arrowhead indicate lymphatic vessels and a blood vessel, respectively. White dotted area indicates Lyve1-positive cells. Scale bar = 50 μm .



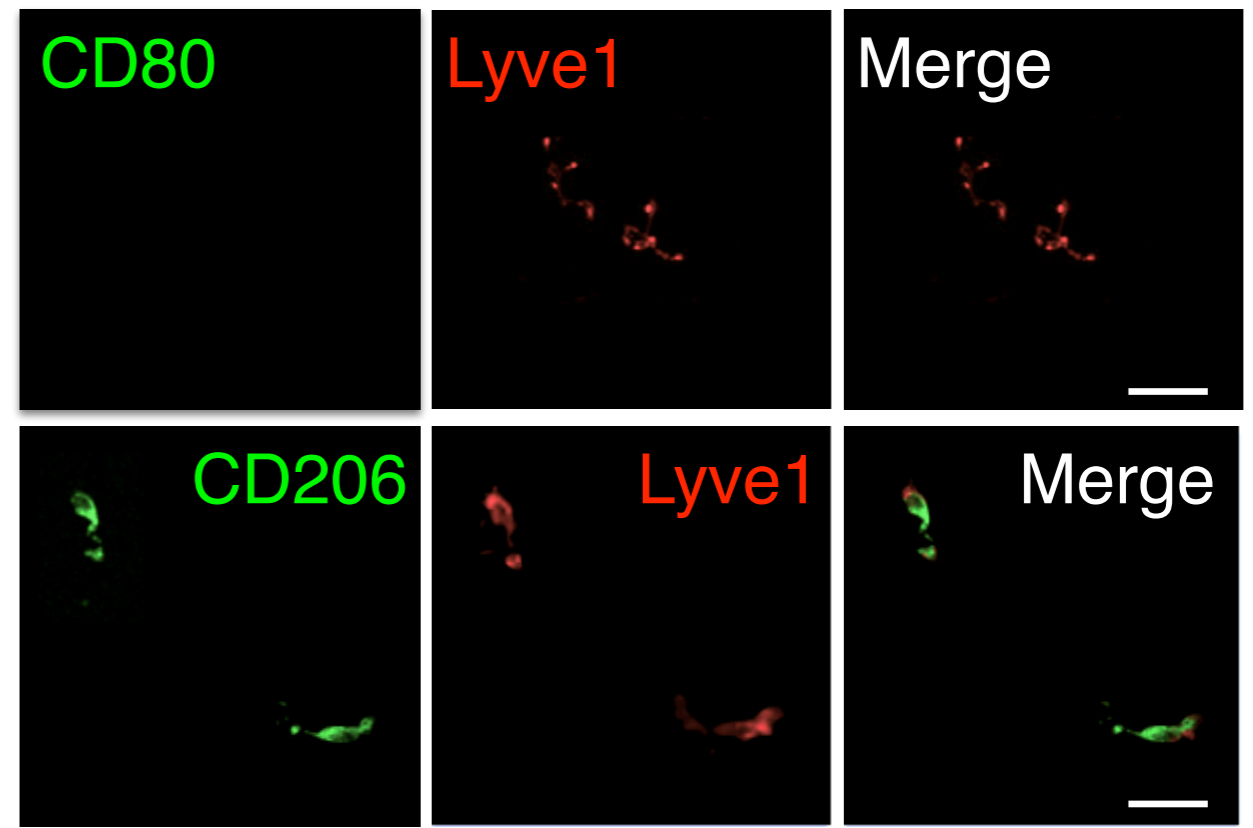
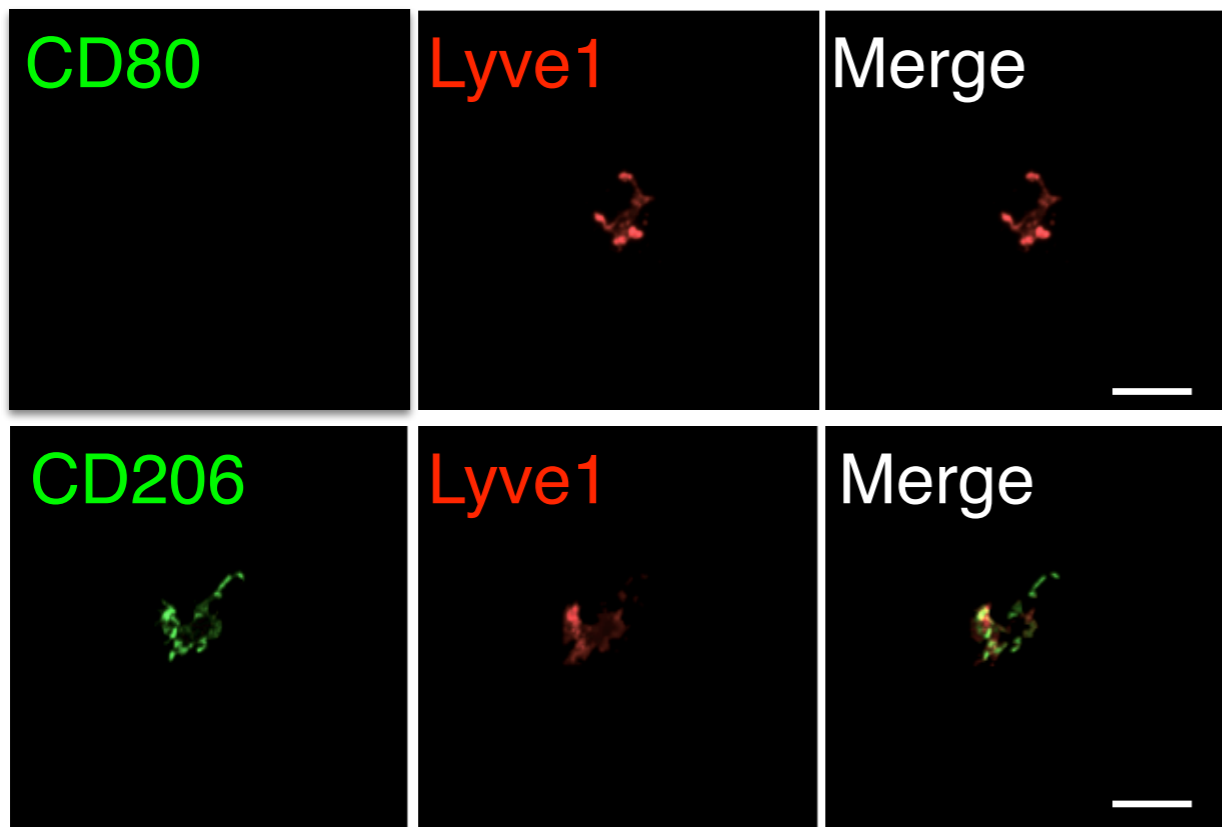
Supplemental Figure 2

Supplemental Figure 2. Images of a flat-mounted retina from 7-week-old Kimba (*vegfa*^{+/+}) mice with staining for CD31 (A, C; green) and Lyve1 (B, D; red). Higher magnification images (C, D, E) of the white dotted area in A and B show Lyve1-positive vessels. White arrows indicate typical lymphatic morphology including blind end and circular phenotypes. White solid square (E) indicates an area where blood vessels and lymph vessels are intertwined. Scale bar = 50 μ m.

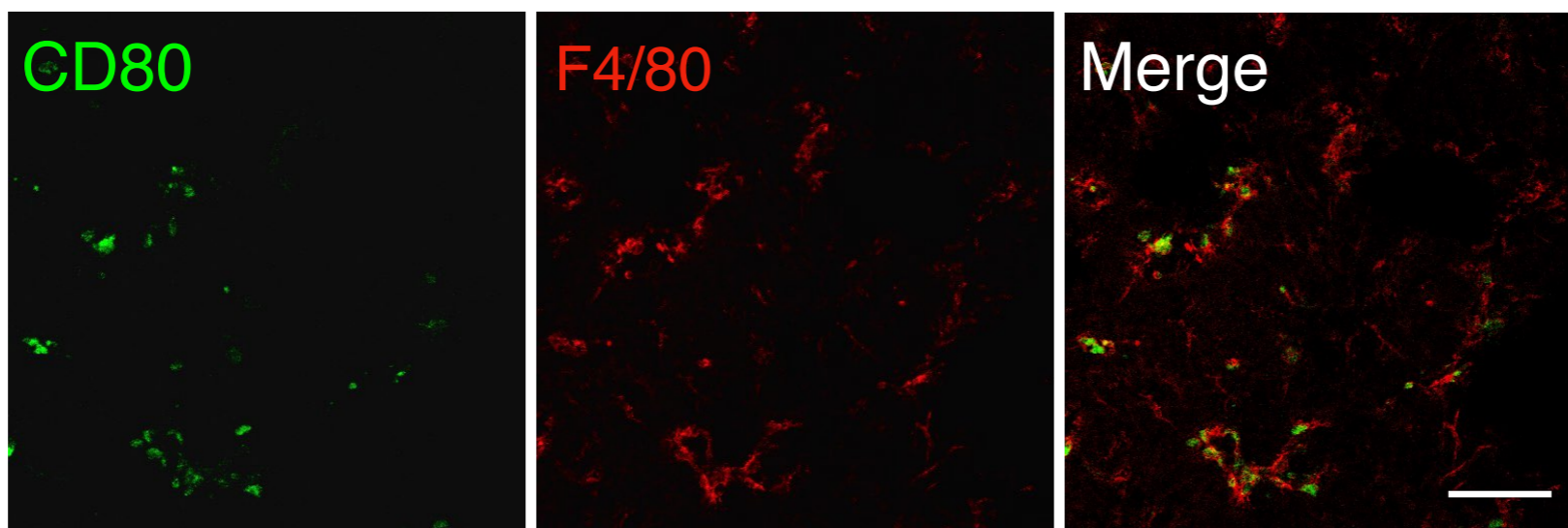
A

Akita

Kimba

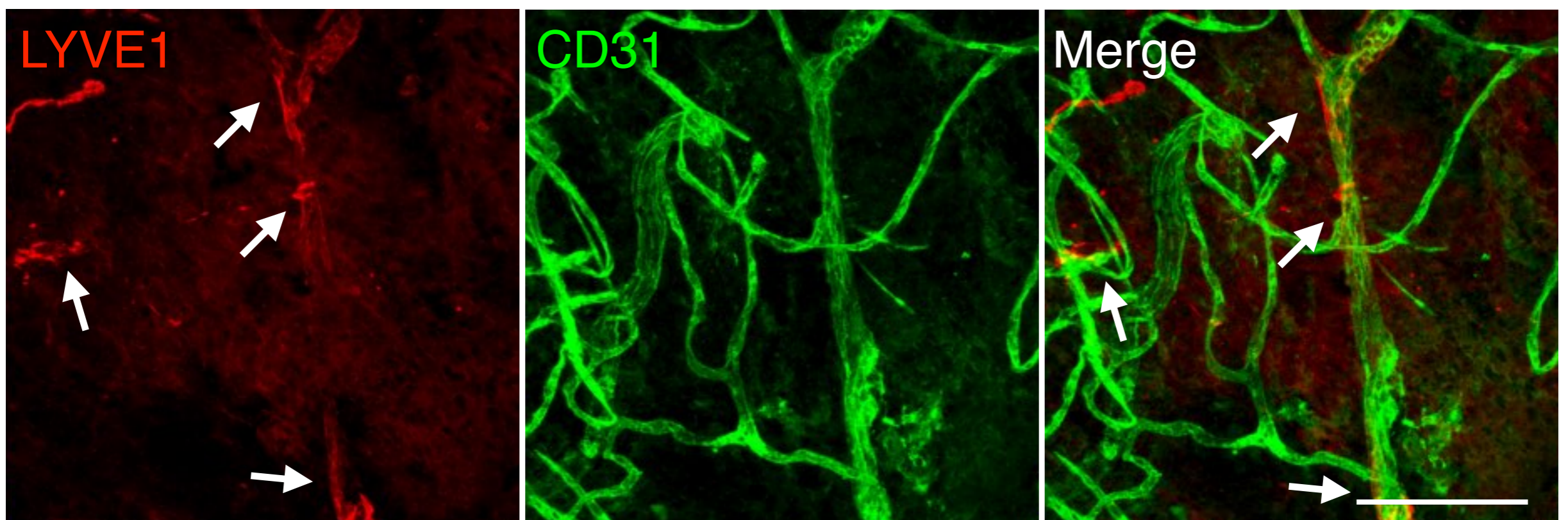


B



Supplemental Figure 3. Images of flat-mounted retinas from 7-week-old Akita ($Ins2^{Akita}$) and Kimba ($vegfa^{+/+}$) mice with staining for macrophage markers. (A) Confocal images show Lyve1-positive cells express CD206 (upper) but not CD80 (lower) in Akita and Kimba mice. Scale bar = 50 μ m. (B). Immunostaining with the same CD80 Ab shows CD80- and F4/80-positive macrophages in Kimba mice as the positive control for A. Scale bar = 100 μ m.

Akimba (12 m.o.)



Supplemental Figure 4. Representative images of flat-mounted retinas from Akimba (*Ins2^{Akita} vegfa^{+/-}*) mice (12-months-old; 12 m.o.) with staining for Lyve1 (red) and CD31 (green). Arrows indicate perivascular Lyve1-positive cells. Scale bar = 100 μ m.