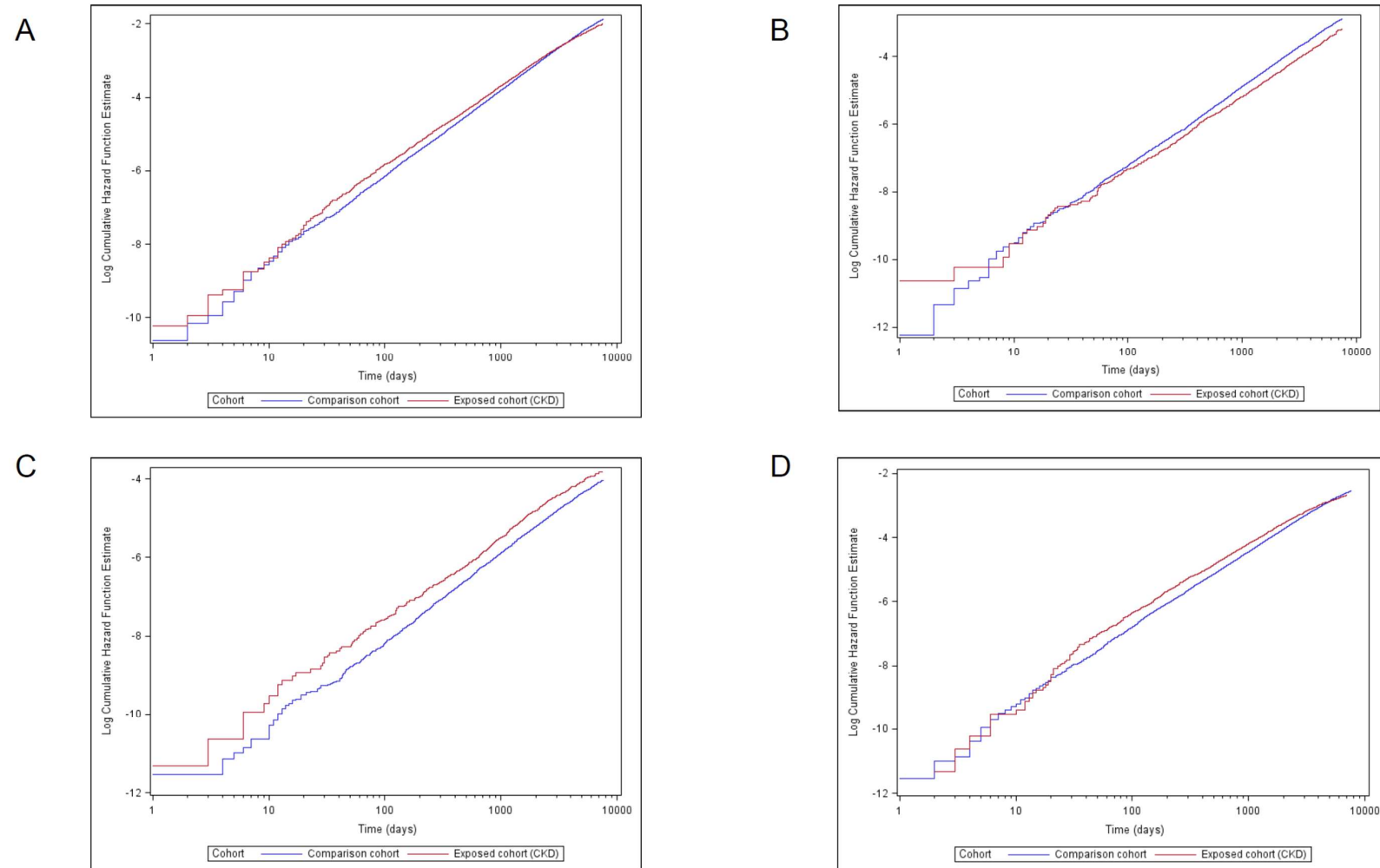


Supplemental table 1. List of codes for diagnoses, procedures and prescriptions on which definitions of exposure, outcomes and covariates were based.

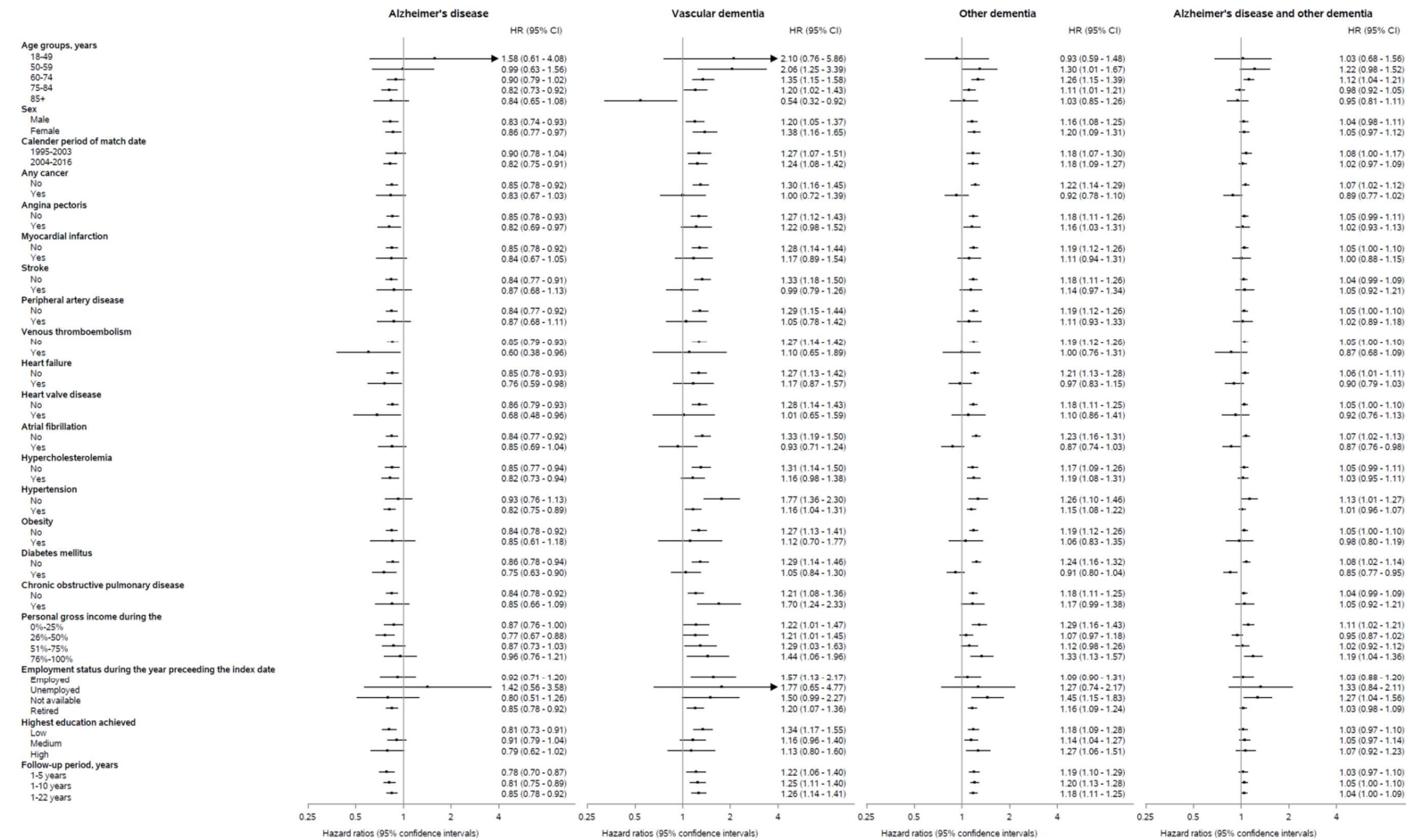
Diagnoses and procedures		Cases, first time	Cases, ever	ICD-8 codes	ICD-10 codes	Procedure codes	ATC codes
Kidney disease							
	Chronic kidney disease	41,925	58,025	792	N18		
Subtypes of kidney disease	Diabetic nephropathy	19,462	24,852	249.02, 250.02	E102, E112, E132, E142, N08.3		
	Glomerulonephritis (without nephrotic syndrome)	2,240	3,719	582	N03		
	Hereditary nephropathy, not elsewhere classified	169	256	756.0, 753.3	N07		
	Chronic tubulo-interstitial nephritis	2,195	2,934	590.09, 593.20, 760.4	N11		
	Glomerular disorders in diseases classified elsewhere	338	1,613		N08		
	Unspecified kidney failure	15,234	26,641		N19		
	Hypertensive nephropathy	4,407	7,858	403, 404	I12, I13		
	Albuminuria/proteinuria	1,967	2,291	789.0	N39.1		
	Recurrent and persistent haematuria	3,371	3,593		N02		
	Renal agenesis and other reductional defects of kidney	379	437		Q60		
	Polycystic kidney disease	2,328	2,837	753.10-753.19	Q61.1-Q61.4		
Dialysis		1,918	13,872		Z99.2		
	April 1, 1973 - December 31, 1995					94300, 94340	
	<1996					94350	
Kidney transplant	>=1996						
		245	2,560	Y95.09	Z94.0		
	1973-1995					57480, 57490	
	>=1996					KKAS	
Diagnoses related to dementia (mild cognitive impairment and amnesic syndromes)				291.19	F04, F05.1, F06.7, F10.6, F18.6, F19.6		
Outcomes							
	All-cause dementia			290.09, 290.10, 293.09, 293.19, 094.19, 292.09,	F00, G30, G30.0, G30.1, G30.8, G30.9), F01.0x, F01.1x, F01.2x, F01.3x, F01.8X, F01.9x), F02, F03, F1x.73 (F10.73-F19.73); G23.1;		

			290.11, 290.18, 290.19	G31.0, G31.0A, G31.0B, G31.1, G31.8B, G31.8E, G31.85	
	Alzheimer's disease		290.09, 290.10	F00, G30, G30.0, G30.1, G30.8, G30.9	
	Vascular dementia		293.09, 293.19	F01.0x, F01.1x, F01.2x, F01.3x, F01.8X, F01.9x	
	Other dementia		094.19, 292.09, 290.11, 290.18, 290.19	F02, F03, F10.73-F19.73; G23.1; G31.0, G31.0A, G31.0B, G31.1, G31.8B, G31.8E, G31.85	
Covariates					
	Angina pectoris		413	I20 (except I20.0), I25.1, I25.9	
	Myocardial infarction		410	I21, I22, I23	
	Stroke		431, 433-434	I61, I63-I64	
	Peripheral artery disease		440-445	I70, I71, I72, I73, I74, I77	
	Venous thromboembolism		451.00, 451.08-09, 451.90, 451.92, 671.01-03, 671.08-09, 450.99, 973.99	I80.1-I80.3, O22.3, O87.1, I26.0, I26.9, O88.2	
	Heart failure		42709, 42710, 42711, 42719, 42899, 78249	I50, I11.0, I13.0, I13.2	
	Heart valve disease		394-398	I05, I06, I07, I08.0, I09.8, I34-I37, I39.0, I39.3, I51.1A, Q22	
	Atrial fibrillation		42793, 42794	I48	
	Hypercholesterolemia		27200	E780	C10
	Hypertension		400-404	D110-DI15, I67.4	C02-C03 C07-C09
	Obesity		277	E65-E68	
	Diabetes mellitus		249, 250 (excluding 249.02, 250.02)	E10 (excluding E10.2), E11 (excluding E11.2), H36.0	
	Chronic obstructive pulmonary disease		490-493, 515-518	J40-J47; J60-J67; J68.4; J70.1; J70.3; J84.1; J92.0; J96.1; J98.2; J98.3	
	Cancer		140-172, 174-194, 200-207	C00-26, C30-34, C37-41, C43, C45-58, C60-76, C80-85, C88, C90-97	

Supplemental figure 1. Proportional hazards for A) all-cause dementia, B) Alzheimer's disease, C) vascular dementia and D) other dementia.



Supplemental figure 2. Risk of dementia subtypes in patients with kidney disease compared with individuals in a matched population without kidney disease stratified by covariates listed in Table 1.



HR: hazard ratio. 95% CI: 95% confidence interval.