



1 **FIGURE LEGEND**

2 **Supplemental Fig. 1.** The relationship between GGT and blood pressure (A and B),  
3 liver examination (C and D), blood lipids (E and F), and uric acid (G).

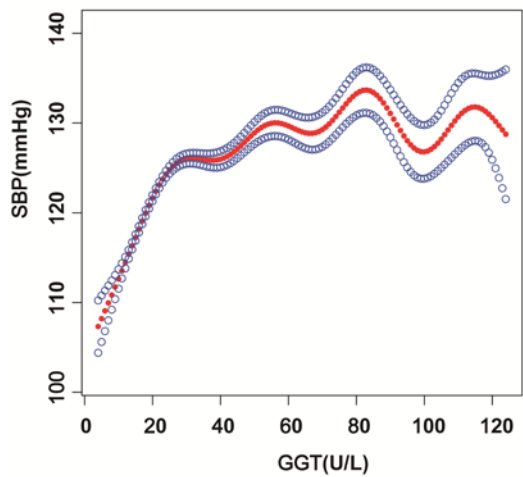
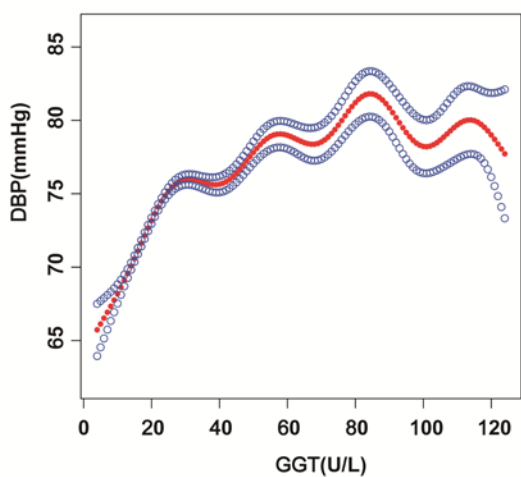
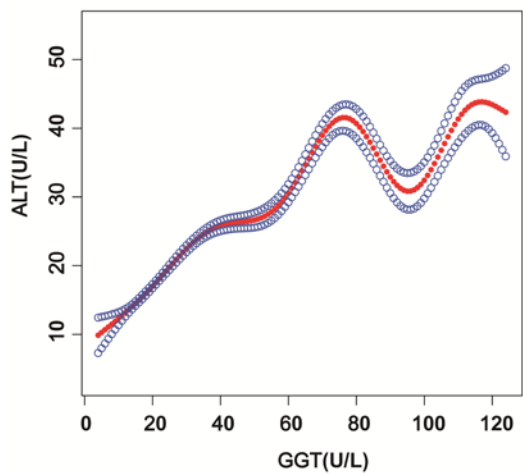
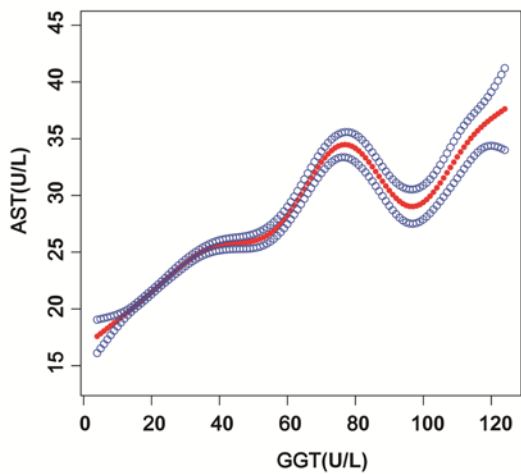
4

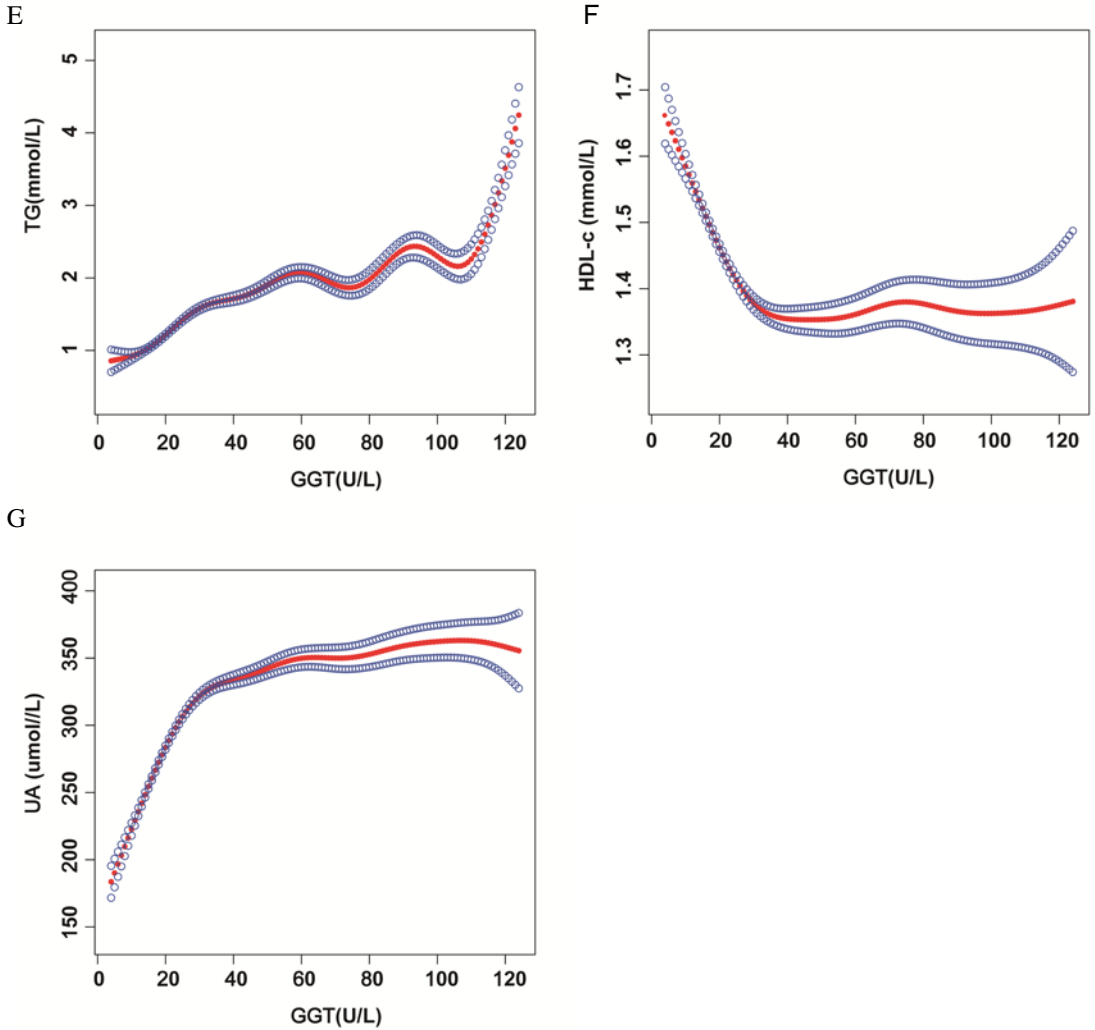
5 **Supplemental Fig. 2.** Association of GGT with the risk of NAFLD in subgroups  
6 analysis

7 The non-linear relationship between GGT and incident of NAFLD according to  
8 subgroups in the adjusted analysis. Note 1: Above model adjusted for age, gender,  
9 BMI, SBP, DBP, , TC, TG, HDL-C, LDL-C, ALT, AST, ALP, ALB, GLB, TB, DBIL,  
10 BUN, Cr, UA, FBG. Note 2: In each case, the model is not adjusted for the  
11 stratification variable.

12

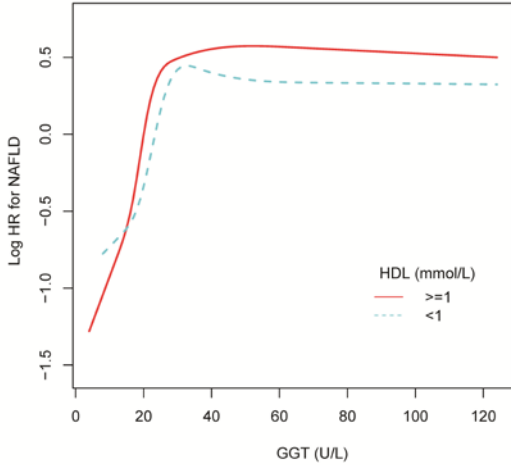
13

**A****B****C****D**

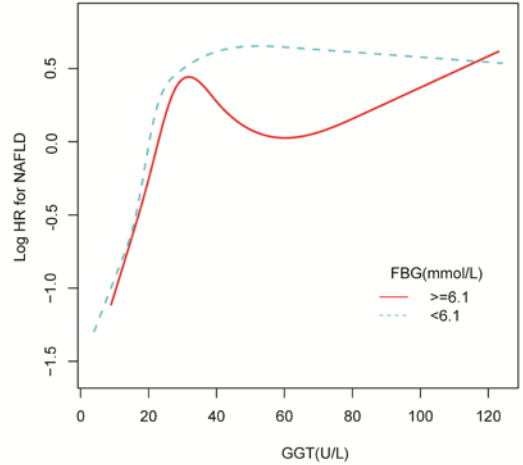


Supplemental Fig. 1. The relationship between GGT and blood pressure (A and B), liver examination (C and D), blood lipids (E and F), and uric acid (G).

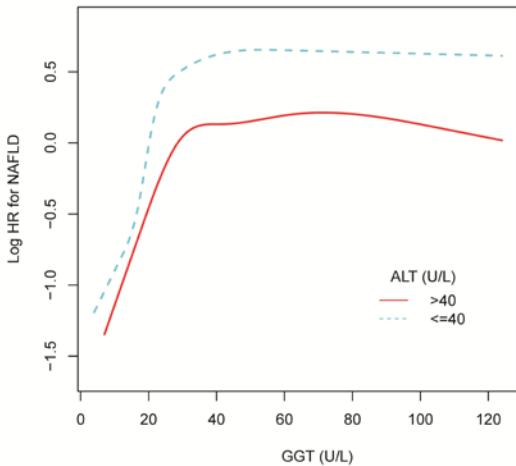
A



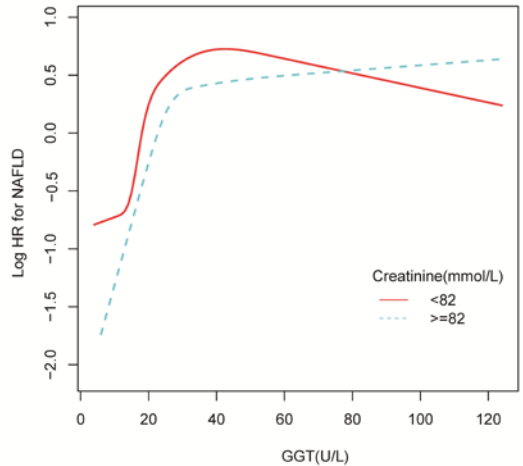
B



C



D



### Supplemental Fig. 2. Association of GGT with the risk of NAFLD in subgroups analysis

The non-linear relationship between GGT and incident of NAFLD according to subgroups in the adjusted analysis. Note 1: Above model adjusted for age, gender, BMI, SBP, DBP, , TC, TG, HDL-C, LDL-C, ALT, AST, ALP, ALB, GLB, TB, DBIL, BUN, Cr, UA, FBG. Note 2: In each case, the model is not adjusted for the stratification variable.