

HBV core protein is in flux between cytoplasmic, nuclear, and nucleolar compartments

Smita Nair and Adam Zlotnick

Supplemental data

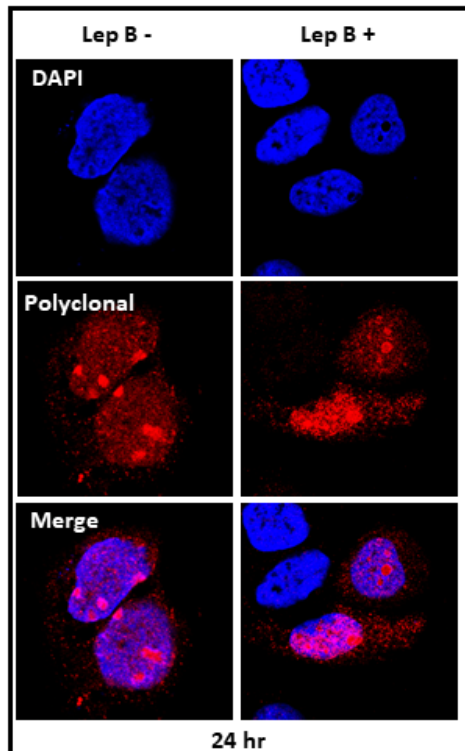


Figure S5. Nucleolar shuttling of Cp is independent of CRM1. Paired experiments at 24hours post-transfection with 18ng of pTruf-HBc DNA, shows nucleolar Cp localization remains unaffected by Leptomycin B treatment.