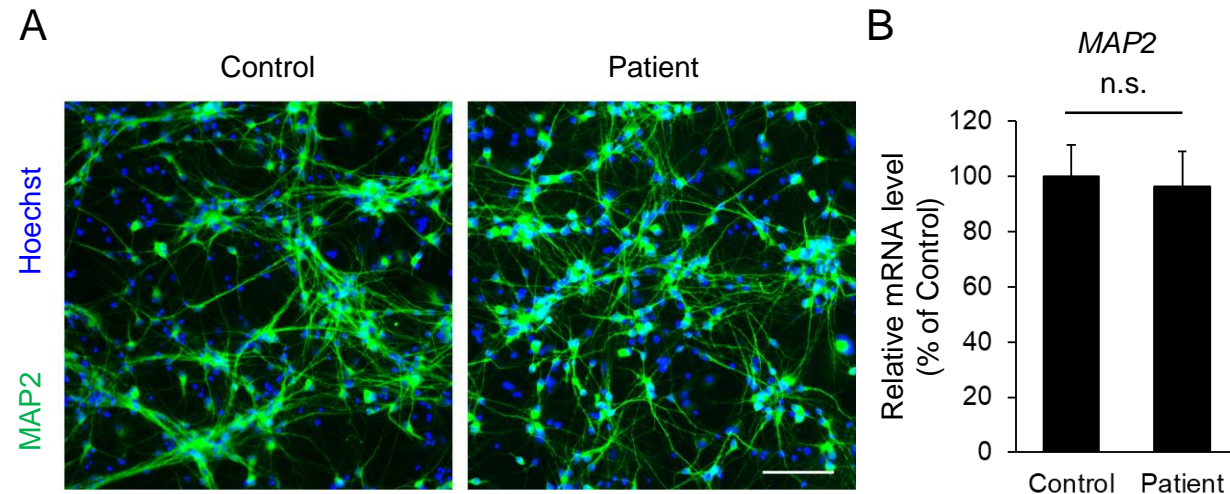


Supplementary Fig. 1 Representative immunostaining images of iPSCs from patients and healthy controls used in this study. iPSCs were stained for pluripotent markers (TRA-1-60, TRA-1-81, SOX2, and OCT-4A). Scale bar, 50 μ m.



Supplementary Fig. 2 Neural differentiation of iPSC derived from patients and healthy controls. **A** Representative images of differentiated neurons. Cells were stained with a neuronal marker, MAP2. Nuclei were stained with Hoechst 33258. Scale bar, 100 μ m. **B** Quantification of the mRNA expression of *MAP2* in differentiated neurons. The expression levels of *MAP2* were analyzed by real-time RT-PCR and normalized to those of *GAPDH* (each n = 4 lines). n.s., not significant, Student's *t*-test.