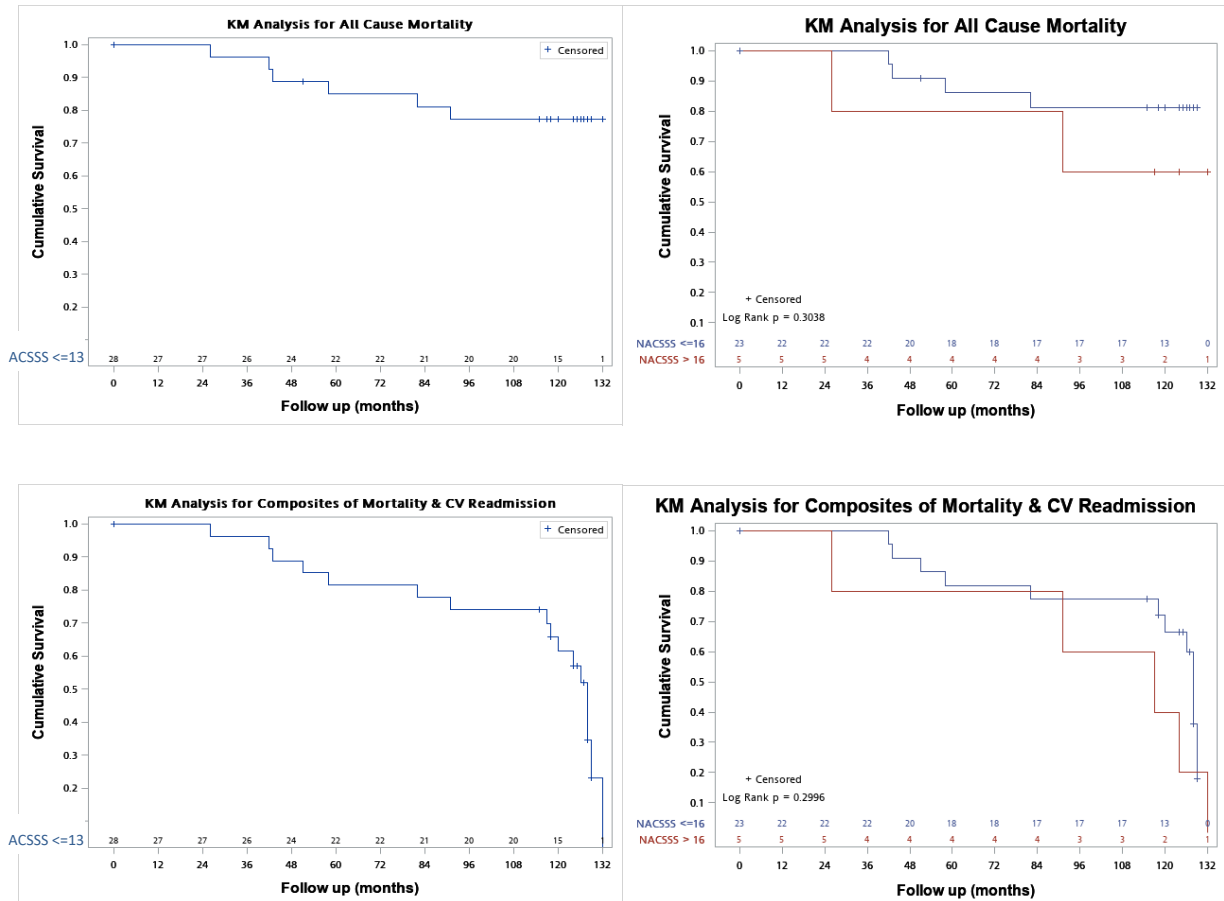
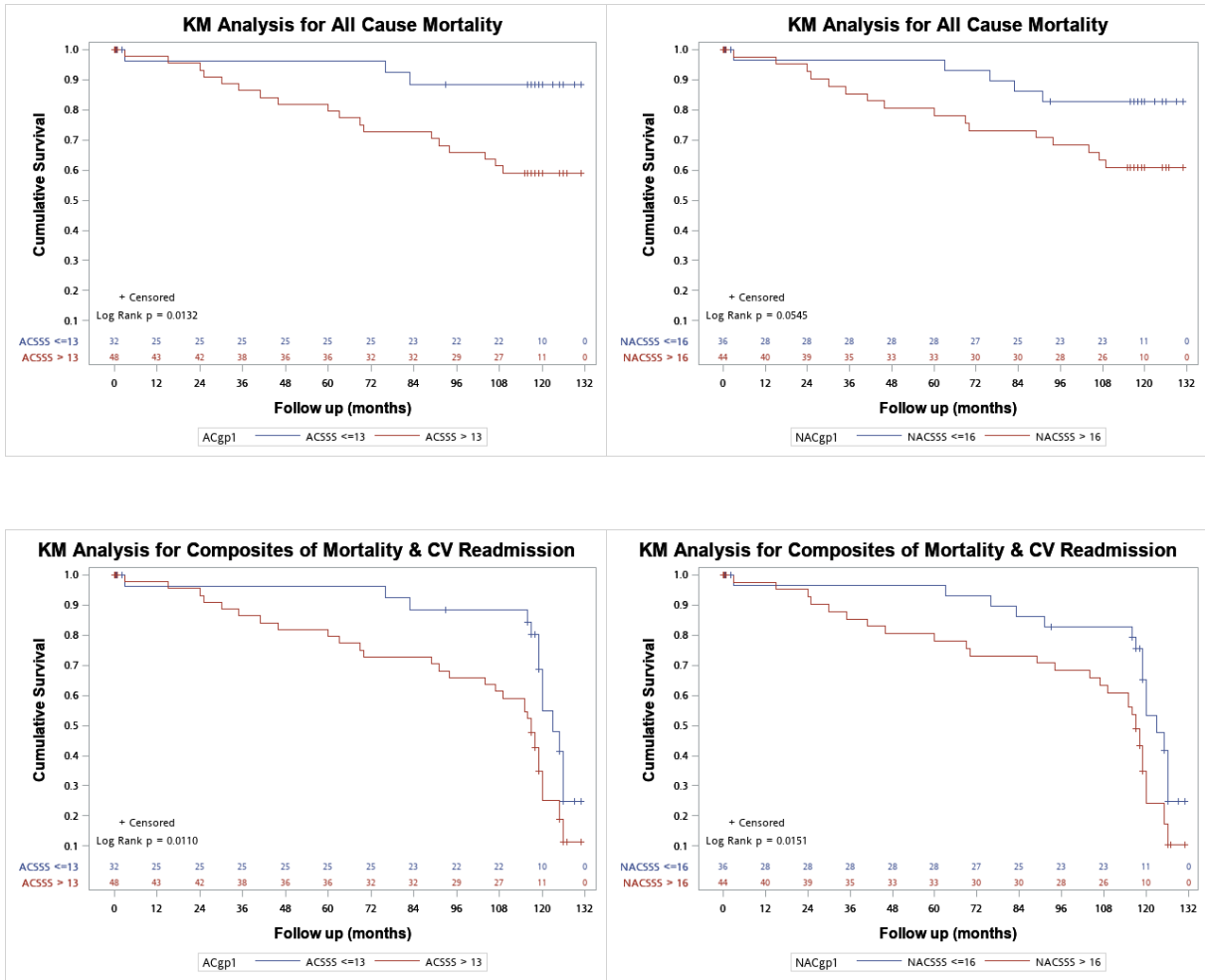


**S3 Fig.** Kaplan-Meier (KM) analysis for all cause mortality and composites of mortality and cardiovascular (CV)-related re-admission in subgroups of discordant and concordant findings of AC and NAC.

- Discordant findings of AC and NAC



- Concordant findings of AC and NAC



AC: attenuation correction; NAC: non-attenuation correction; SSS: summed stress score