

Supplementary material for **Transition from wild to domesticated Pearl Millet (*Pennisetum glaucum*) revealed in ceramics tempers from three Middle Holocene sites in Northern Mali**

This supplement includes images of each sherd subjected to micro CTscanning and examples of extracted plants remains from the resulting high-resolution tomography. A brief typological characterization of each sherd is also provided. All remains are identified as pearl millet (*Pennisetum glaucum/violaceum*), unless otherwise indicated.

MK36

Sherd 1237

Pivoting impression A+B Fishnet with a
curved edged spatula

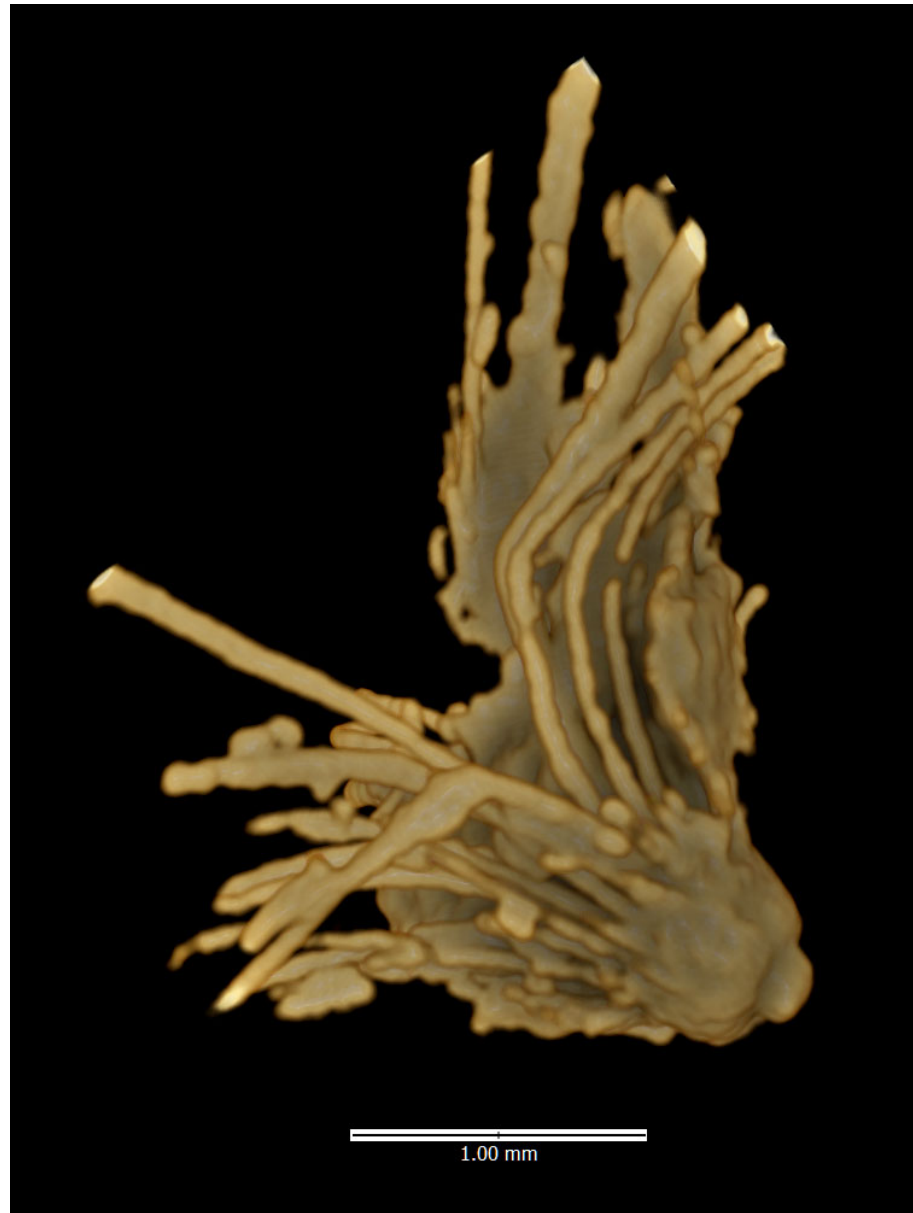
Impression pivotante A+B Fishnet avec
spatule à front courbe

(<https://lampea.cnrs.fr/cerafim/spip.php?article72>)



Inclusion 1

Involucre base with torn peduncle



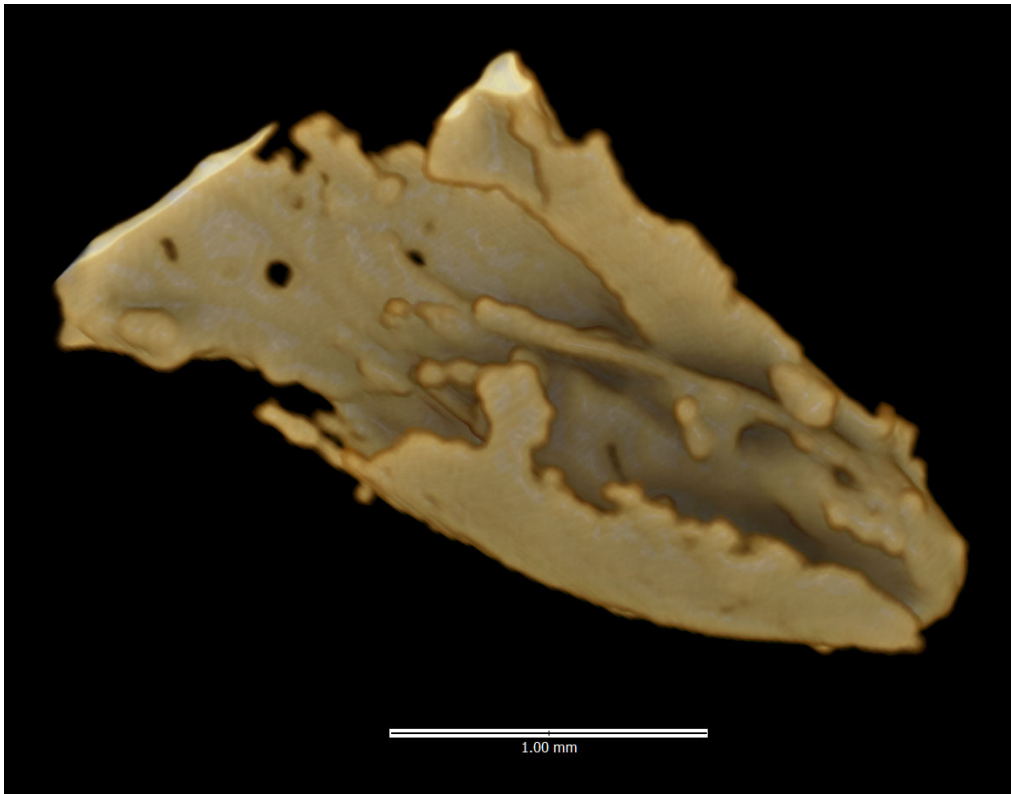
Inclusion 3. Two views of spikelet



Inclusion 11. Two views of spikelet, from paired spikelets



Inclusion 12. Two views, spikelet fragment



Inclusion 13. Two views of solitary spikelet in fragment of probably sessile involucre base, with preserved bristles.



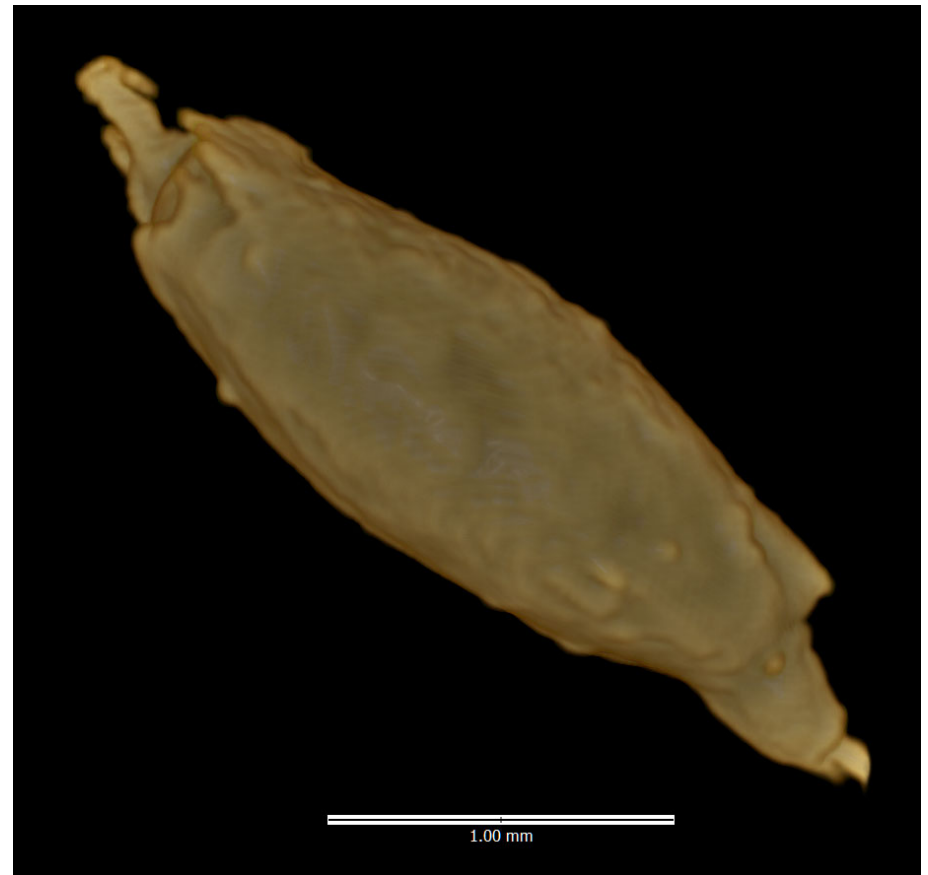
Sherd 295

Eroded surface

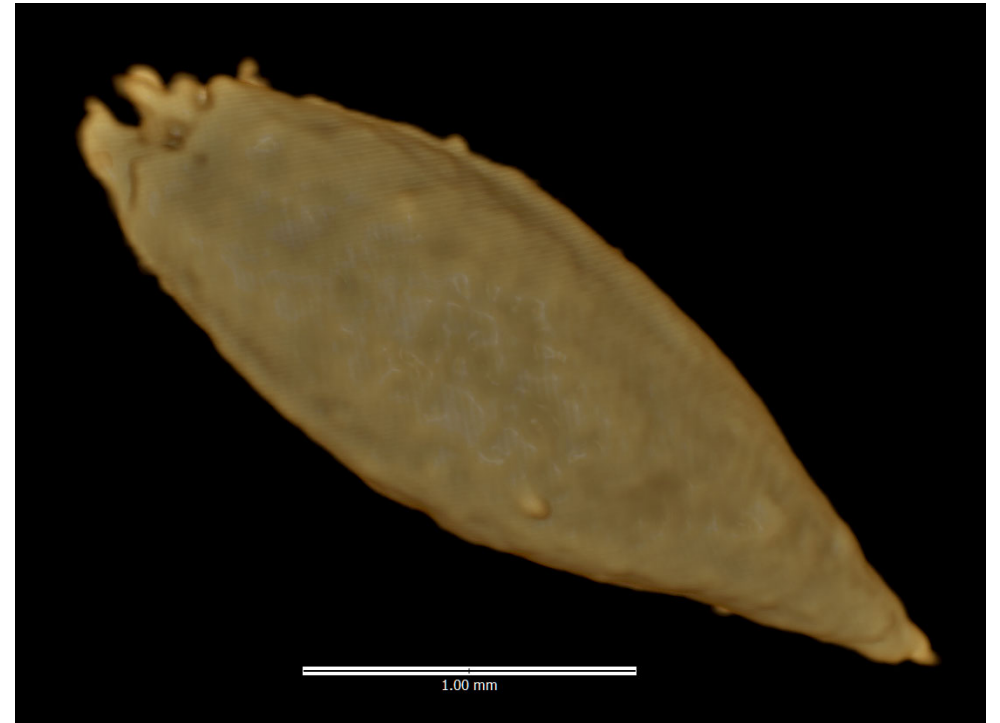
Surface érodée,
Décor non identifiable



Inclusion 31. Two views, spikelet.



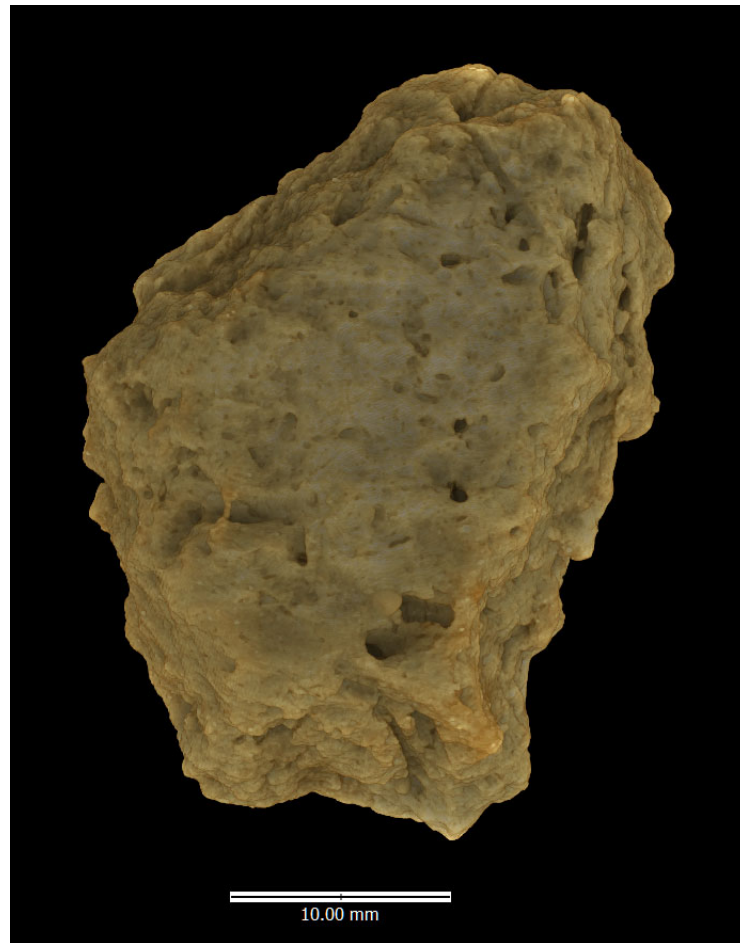
Inclusion 32. Two views, spikelet



Sherd 304

Eroded surface

Surface érodée,
Décor non identifiable



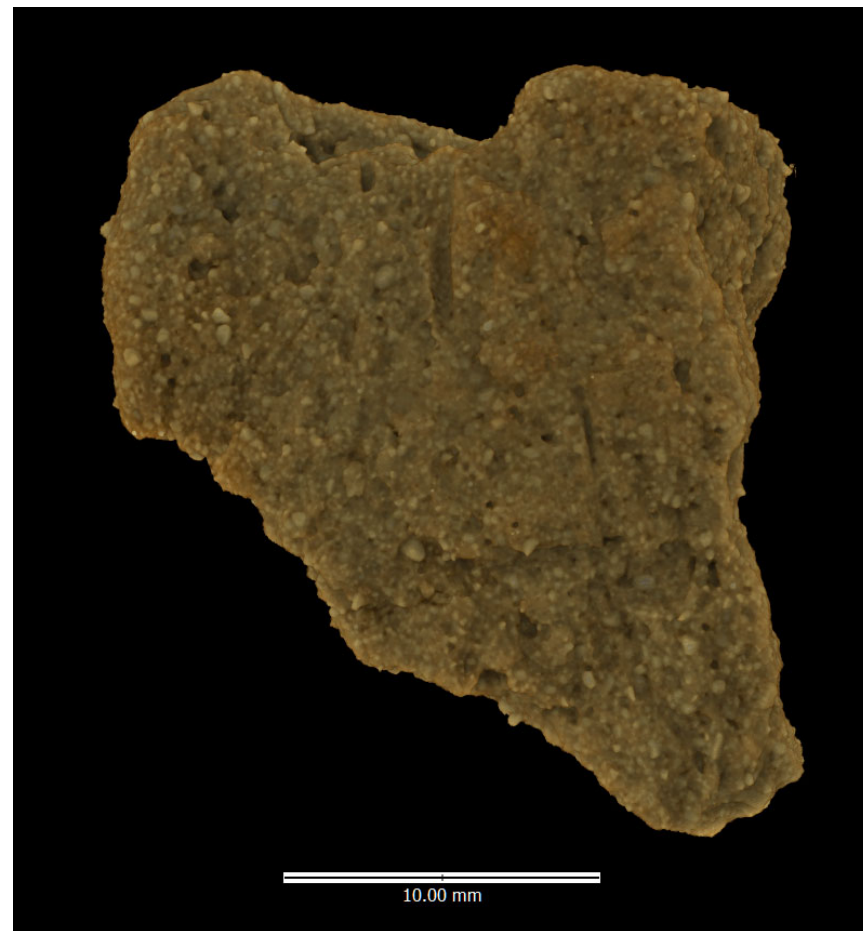
Inclusion 8. Two views, spikelet



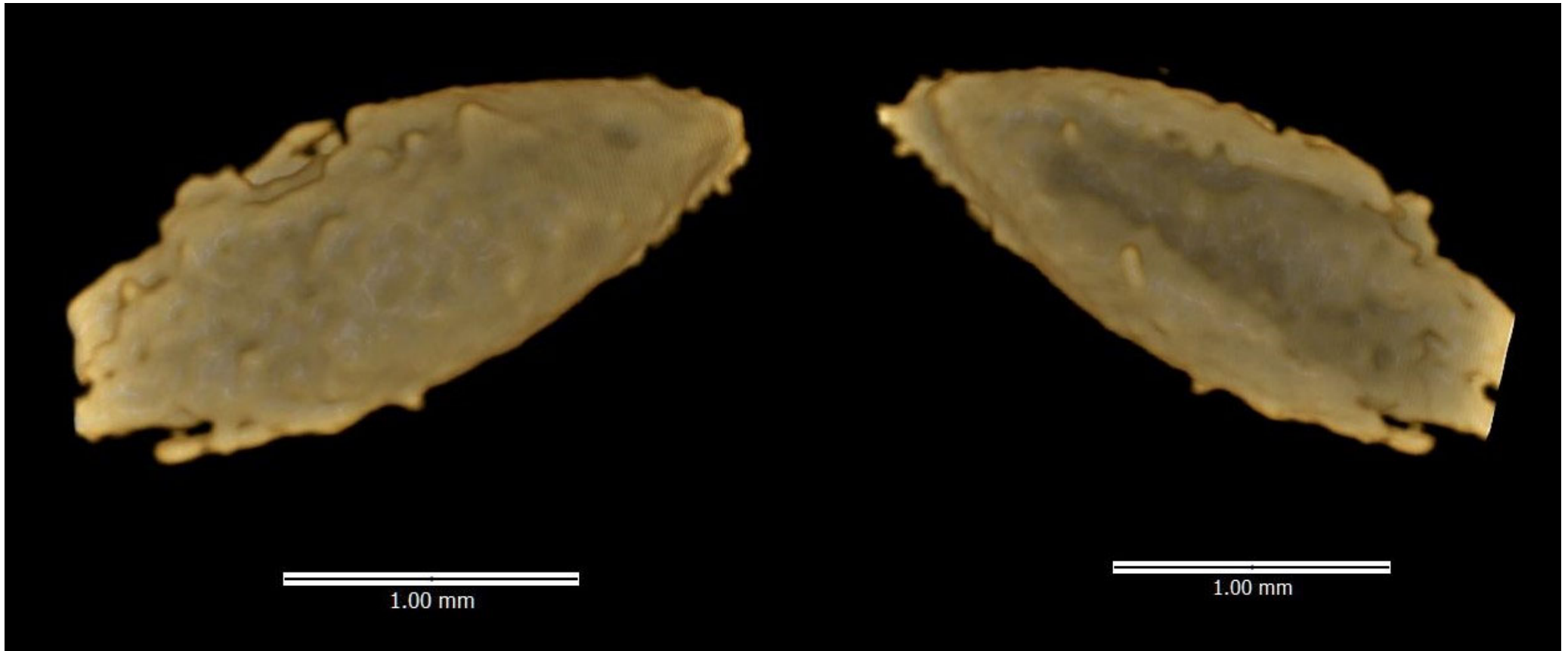
Sherd 369

Eroded surface

Surface érodée,
Décor non identifiable



Inclusion 4. Two views, fragmentary spikelet (lemma and palea)



Sherd 728

Decoration:

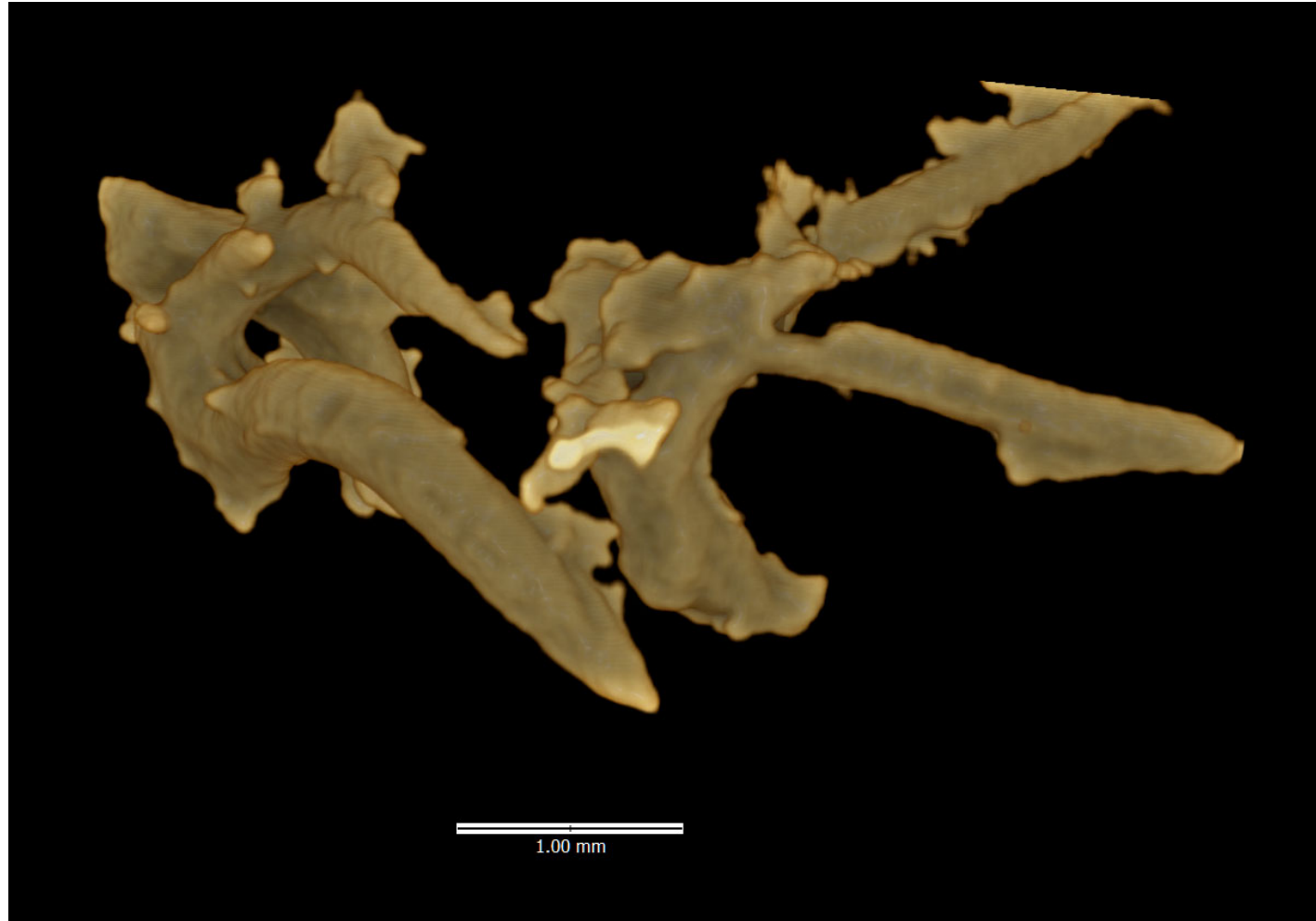
Perpendicular simple impression with
round edged point

Impression simple perpendiculaire
avec poinçon à partie active mousse
(<https://lampea.cnrs.fr/cerafim/spip.php?article232>)



Inclusion 5.

Bristle fragments from
involucre base



Sherd 543

Decoration:

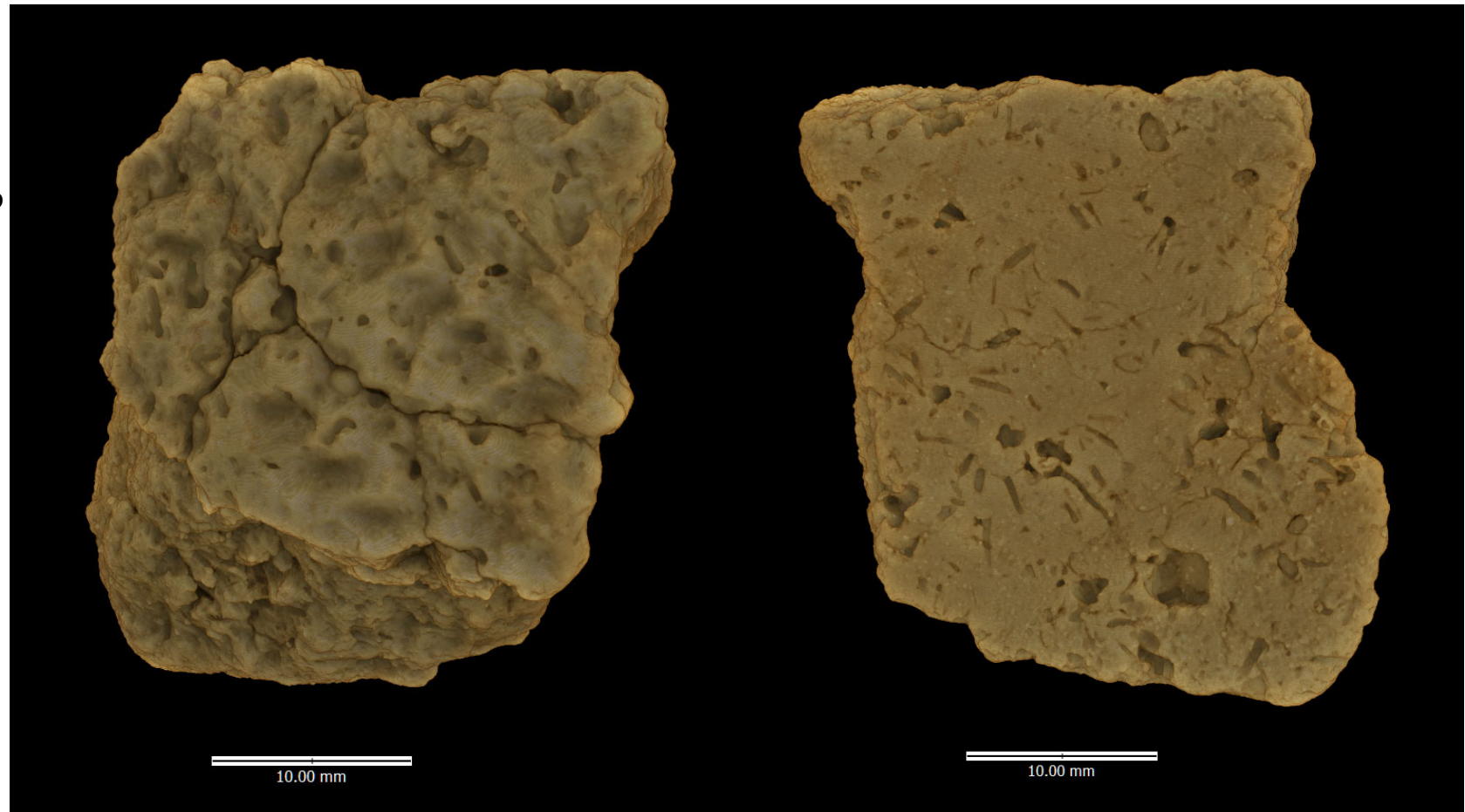
Pivoting impression A+B

Leiterband with a multiple teeth (dots and dashes) comb

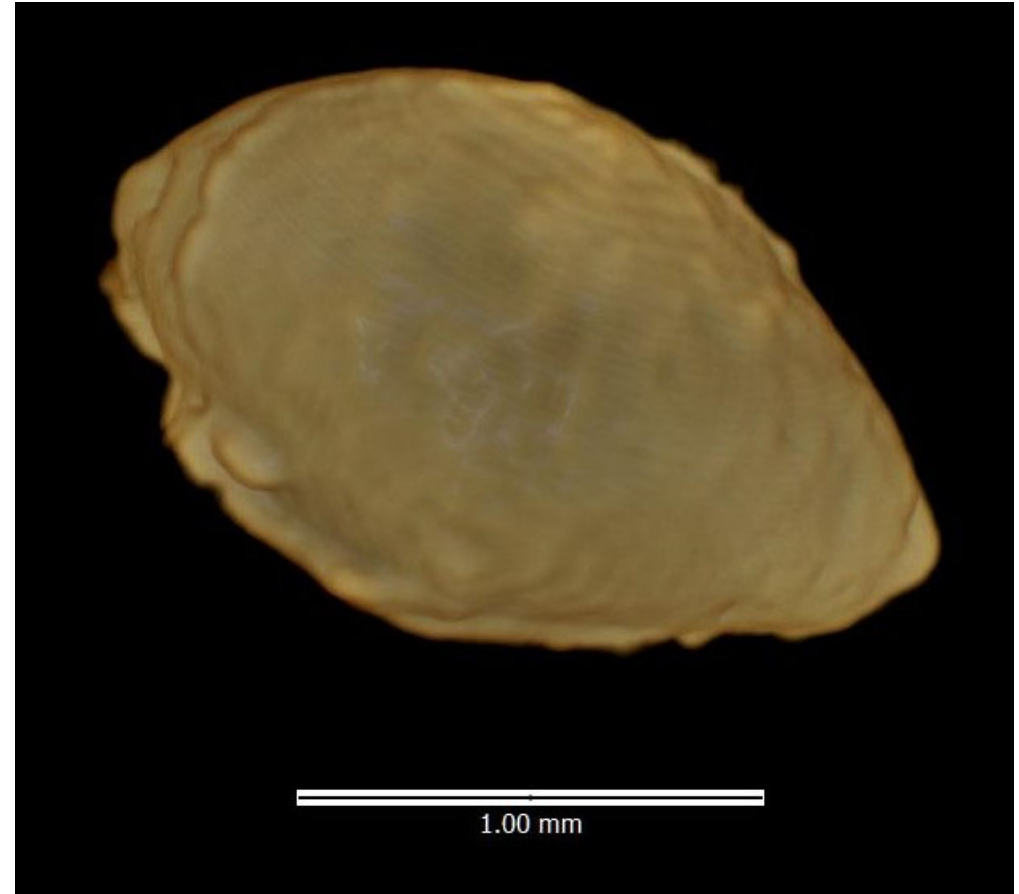
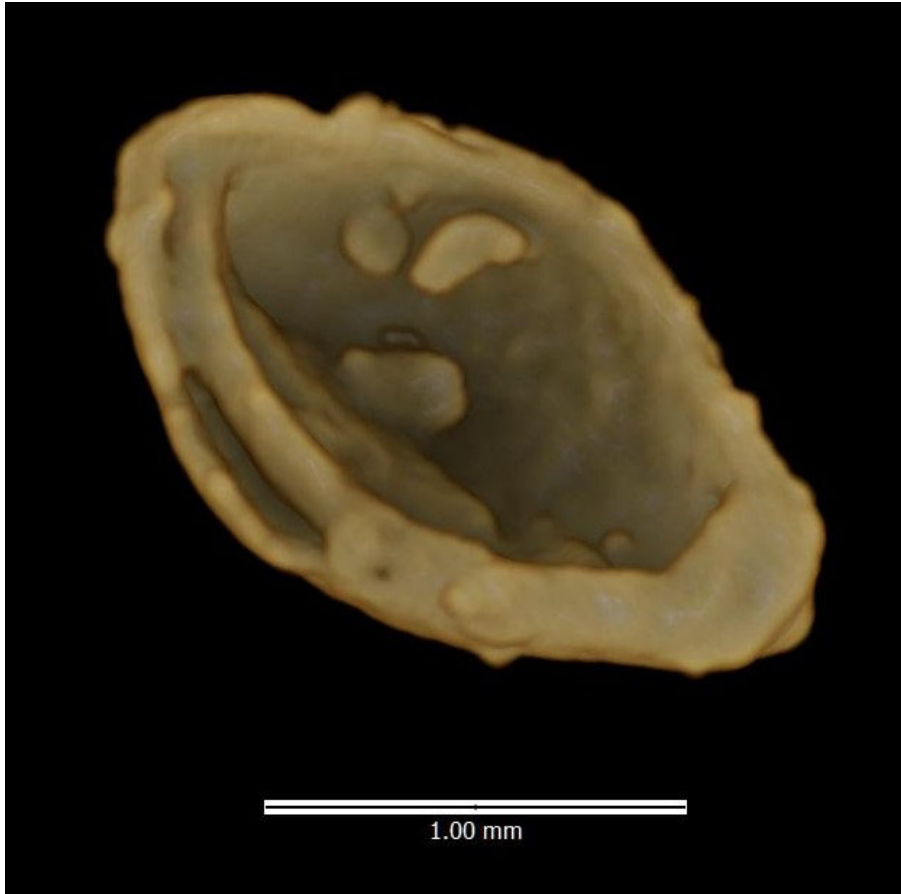
Impression pivotante A+B

Leiterband avec un peigne à dents multiples mixtes.

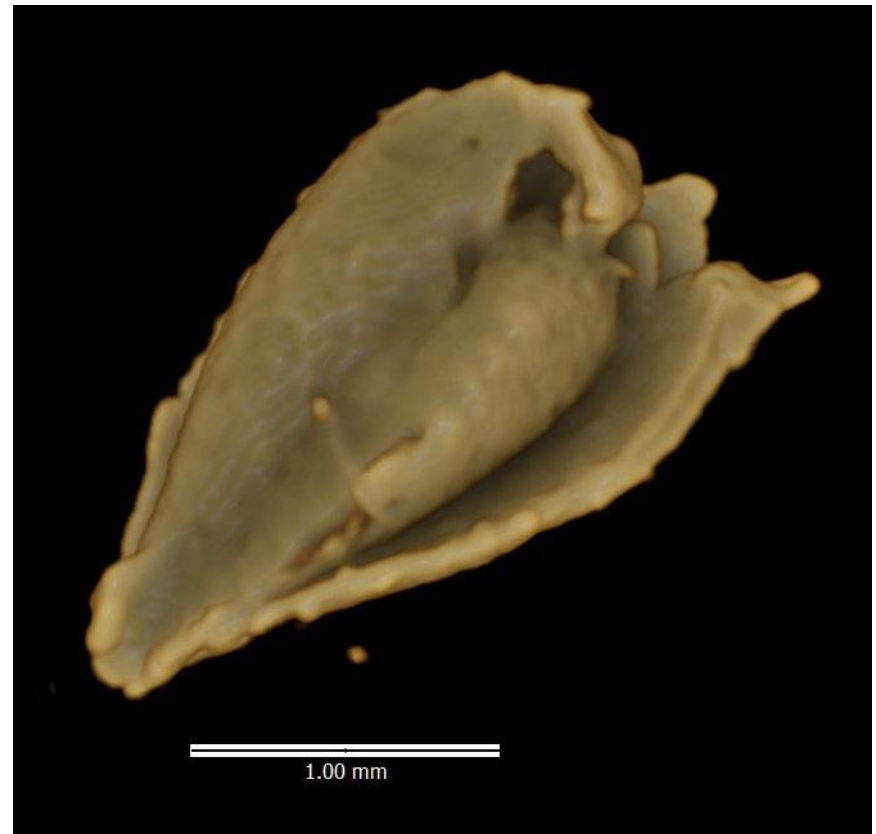
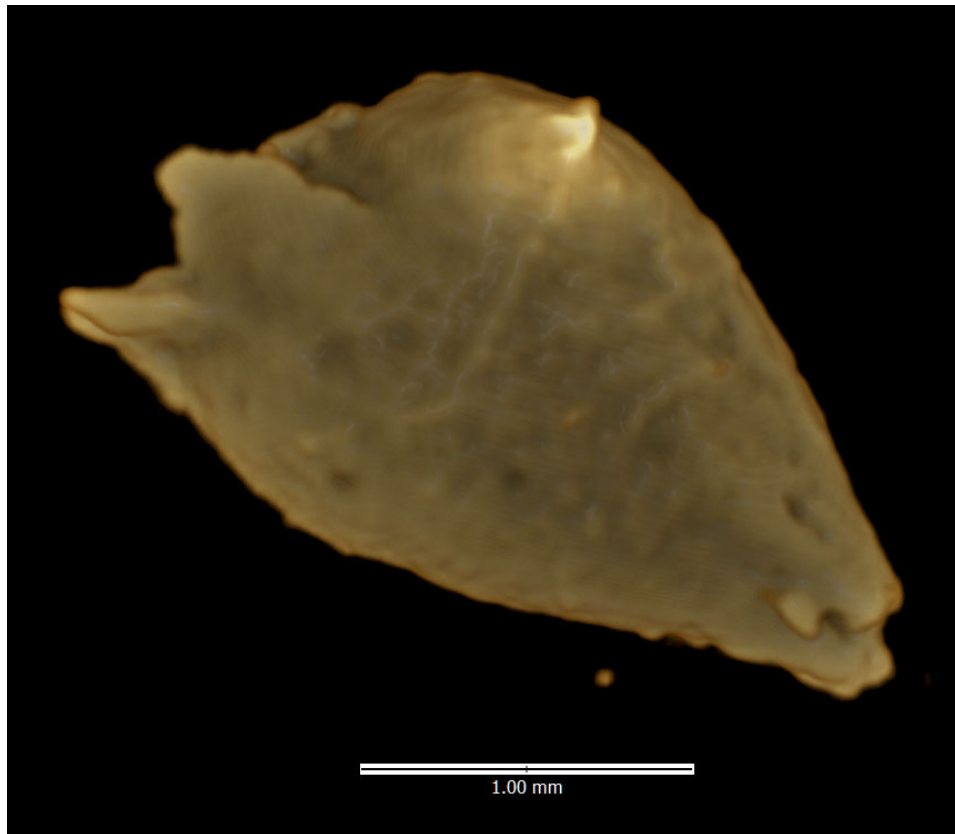
<https://lampea.cnrs.fr/cerafim/spip.php?article242>



Inclusion 16. *Echinochloa* sp. in husk (spikelet without glumes)



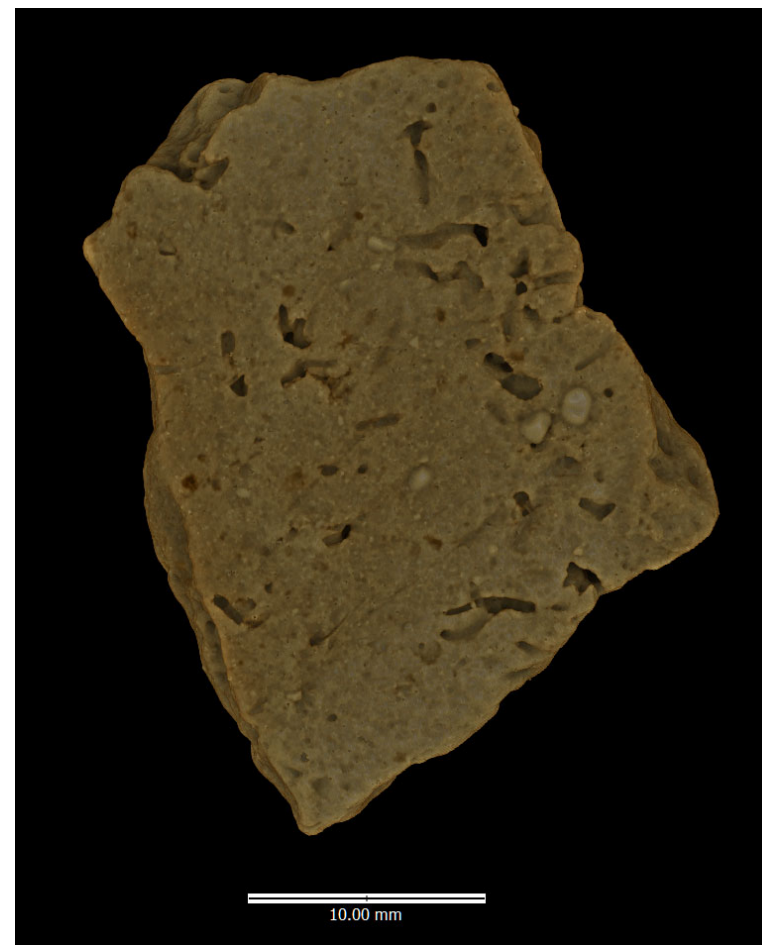
Inclusion 17. Two views, spikelet



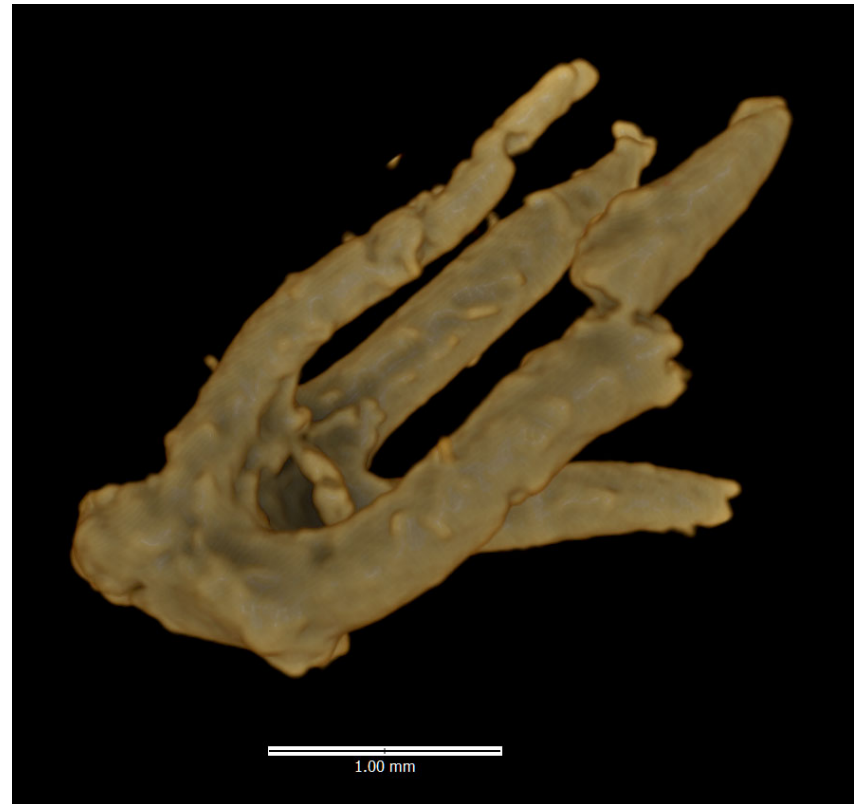
Sherd 276

Eroded surface
Indetermined decor

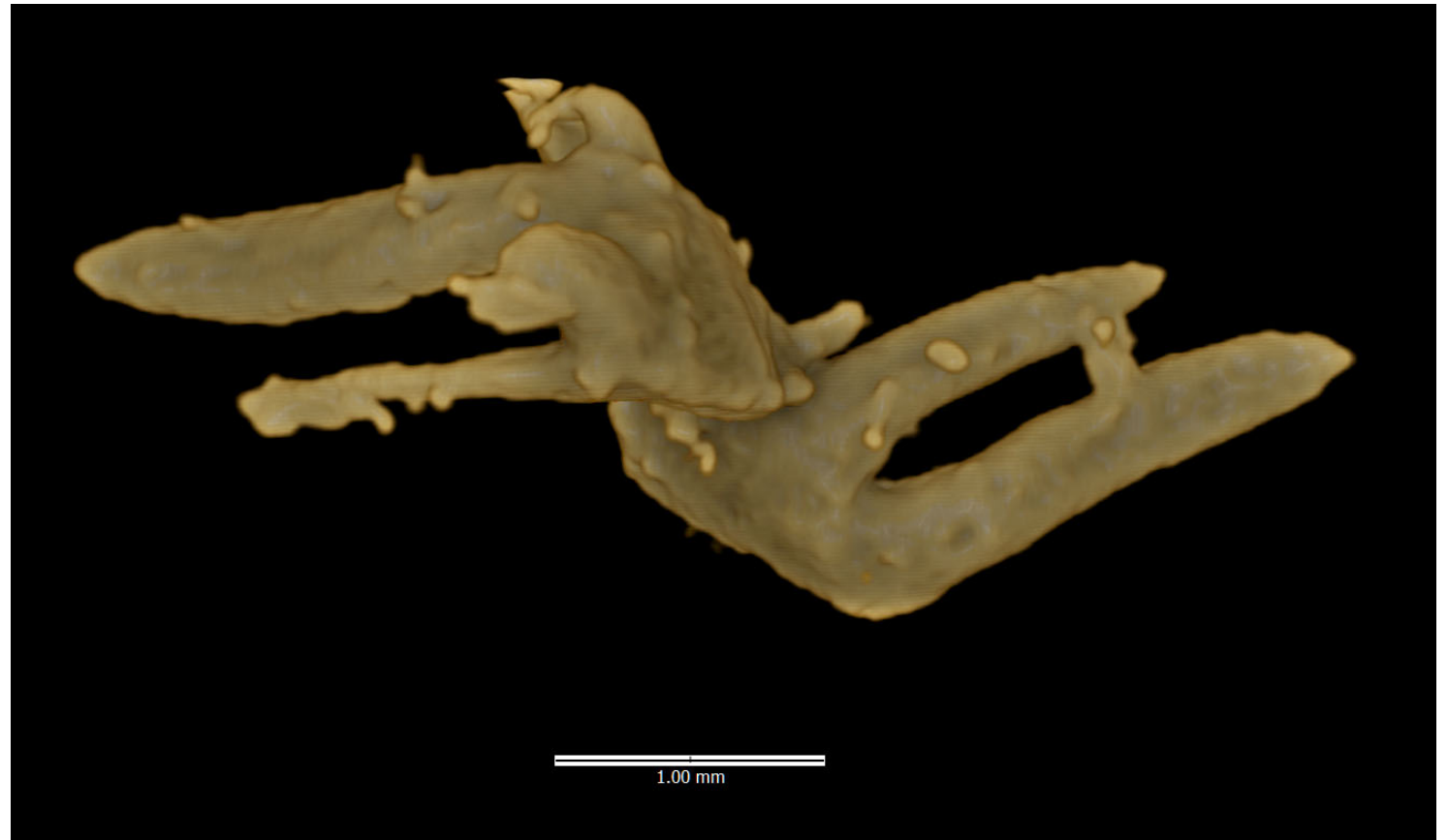
Surface érodée,
Décor non identifiable



Inclusion 18. Two views of involucre base, with torn peduncle, and bristles.



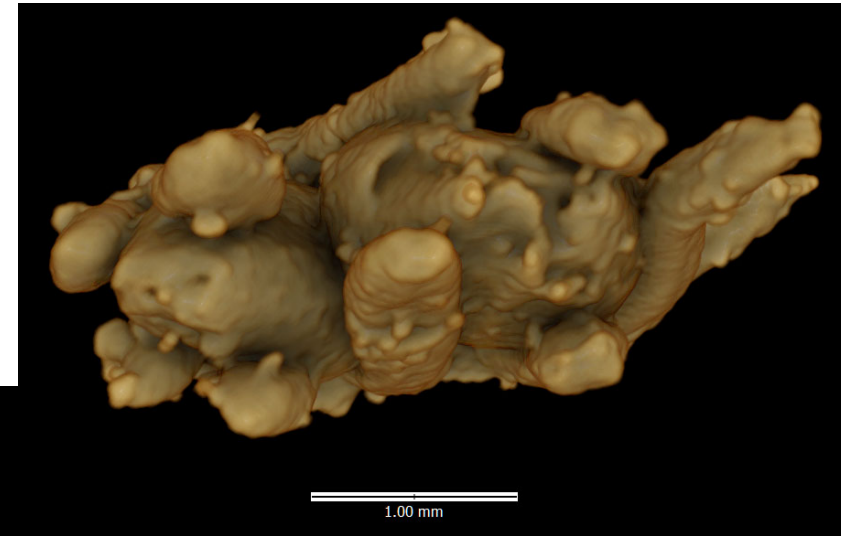
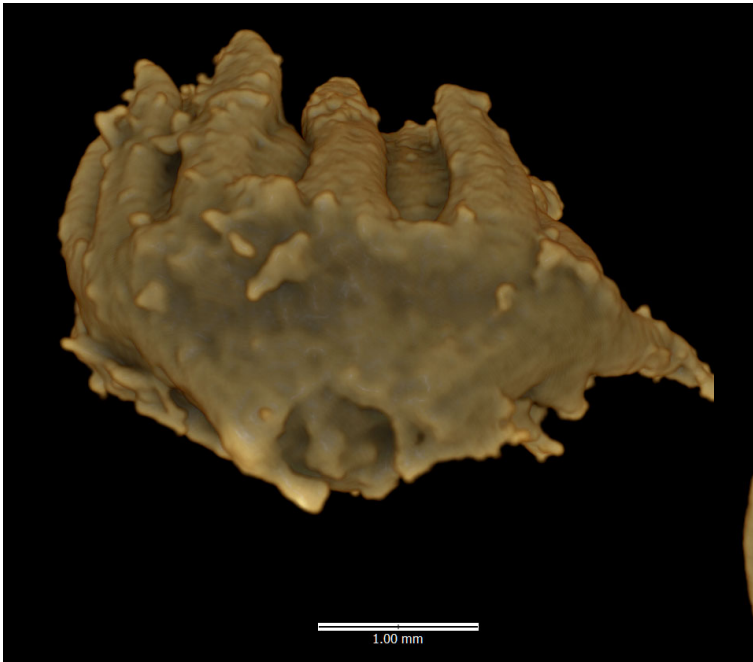
Inclusion 19. Bristle fragments from involucre base



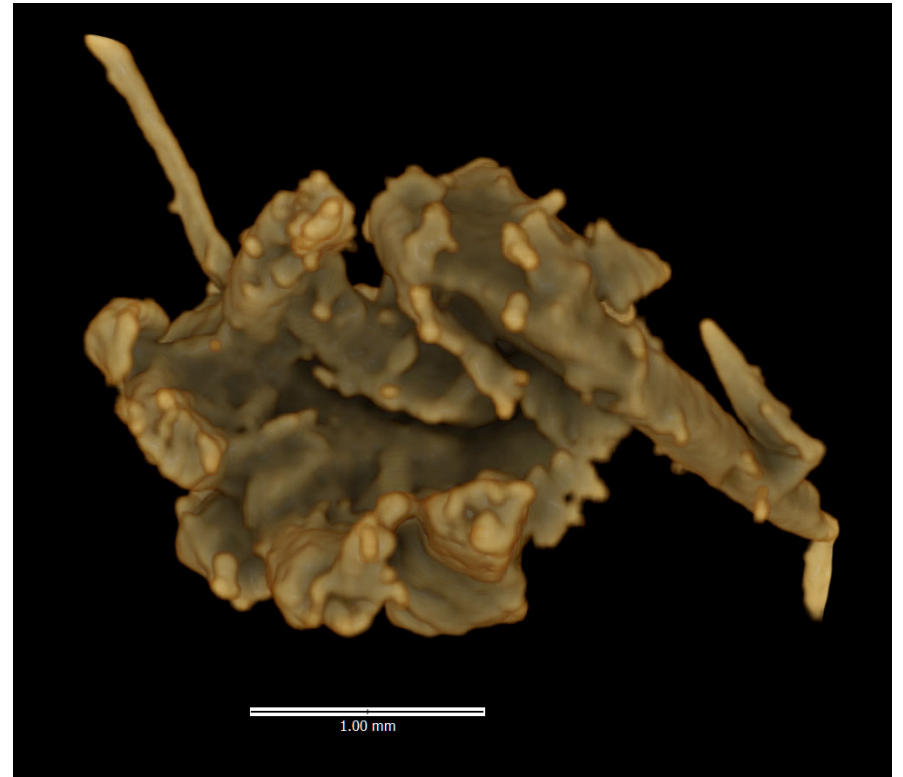
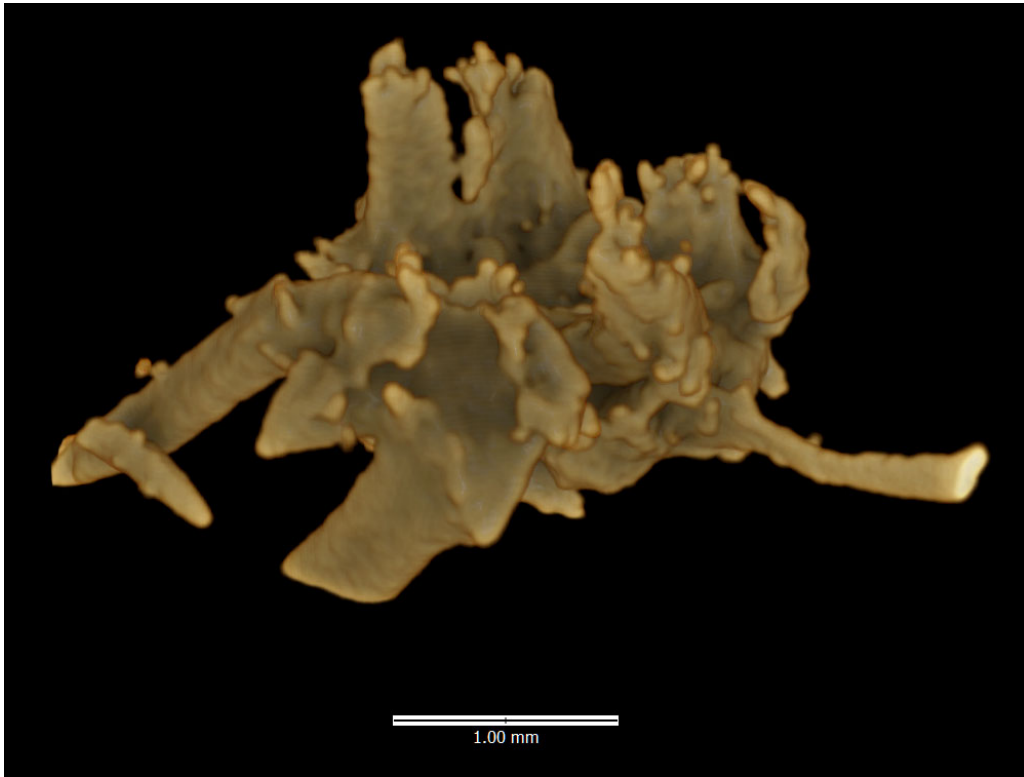
Inclusion 20. Two views: Involucre with sessile base (wild-type abscission) , and paired spikelets.



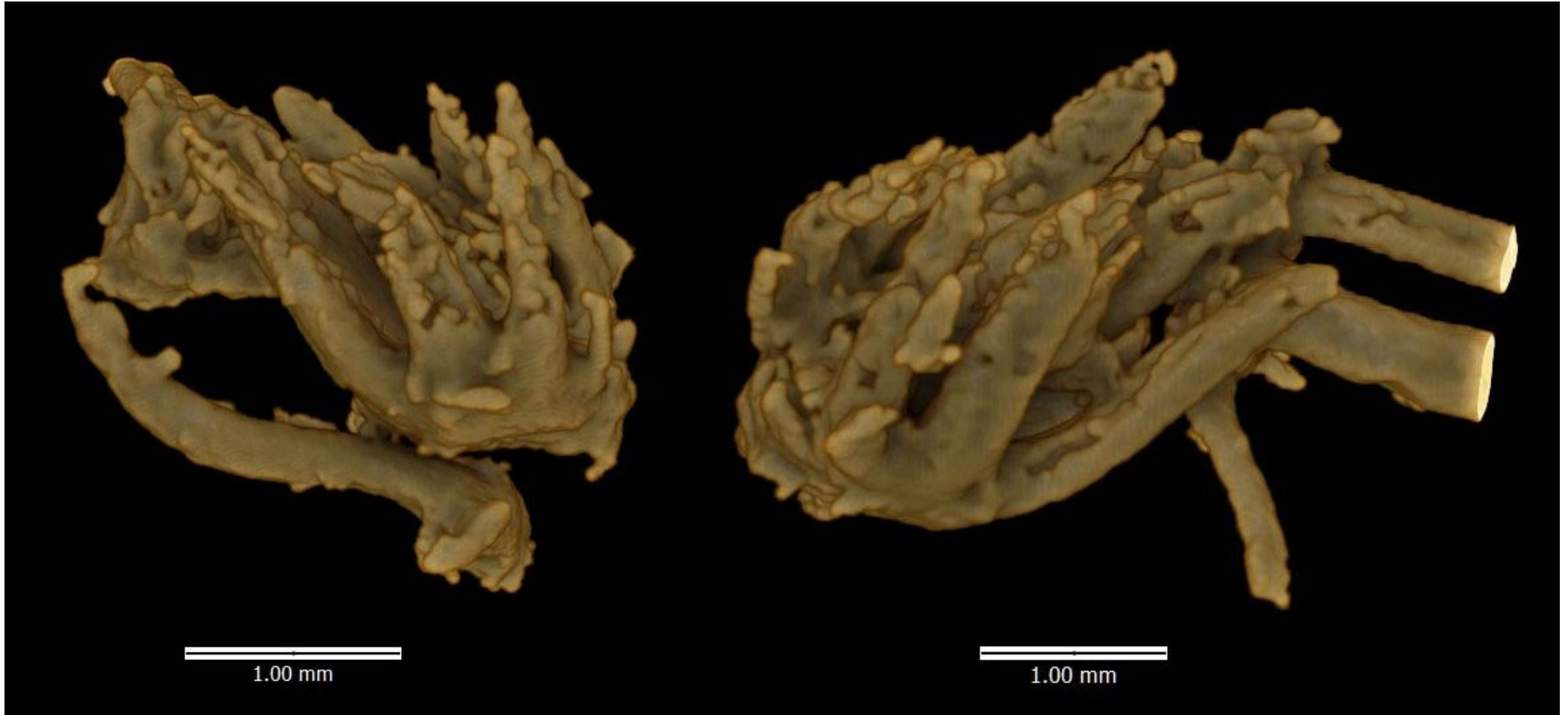
Inclusion 20. Two more views, highlighting sessile base (abscission scar) , and paired spikelets.



Inclusion 21. Involucre, with bristles, indeterminate attachment type and spikelet number



Inclusion 25. Two views: involucre with torn peduncle, indet. Spikelet number; additional bristle (at left)

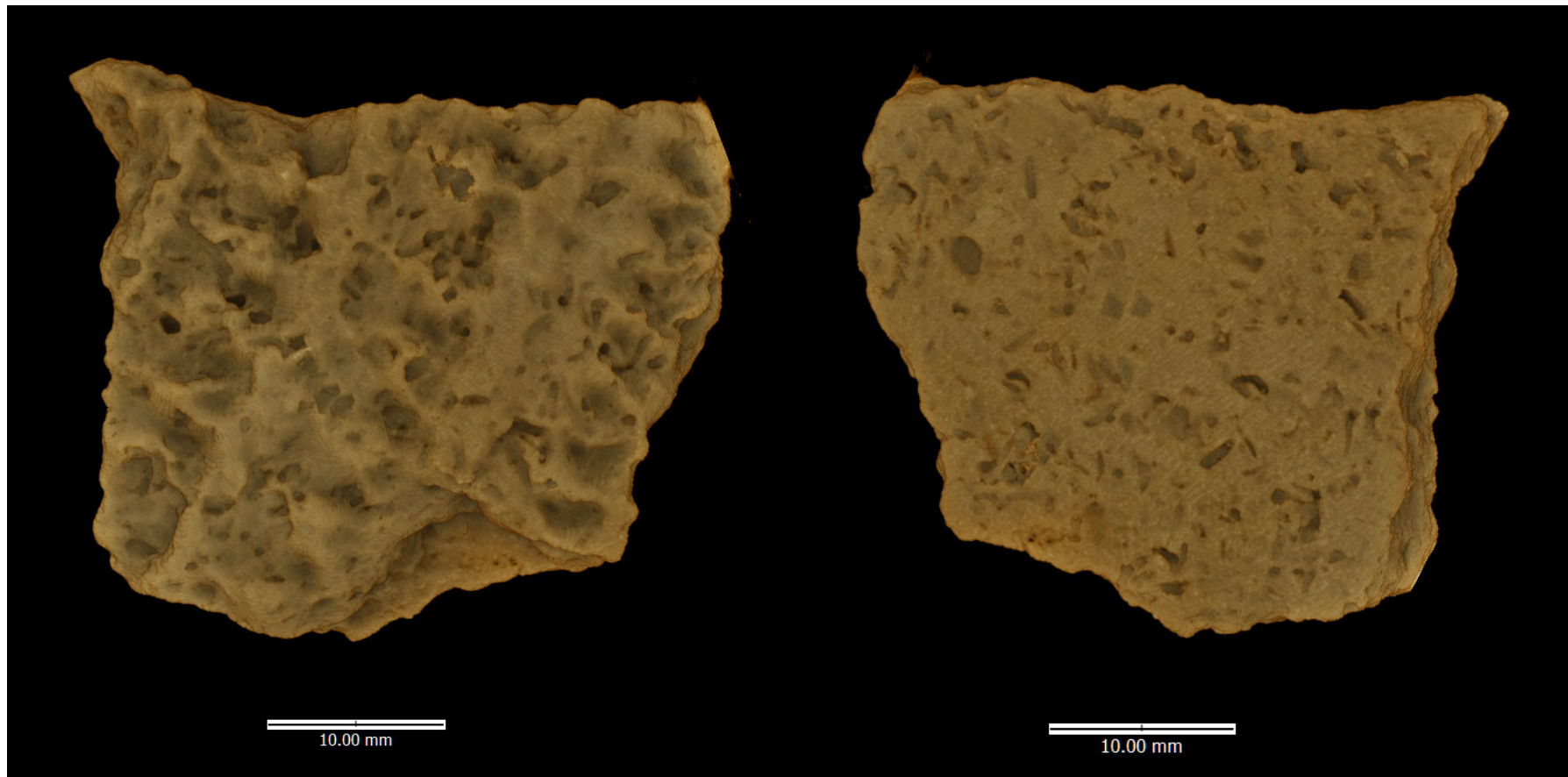


Sherd 439

Decor:
Pivoting impression
A+B Leiterband with a
multiple teeth (dots and
dashes) comb

Impression pivotante
A+B Leiterband avec un
peigne à dents multiples
mixtes.

<https://lampea.cnrs.fr/cerafim/spip.php?article242>



Inclusion 3.

Involucre with smooth base (sessile).

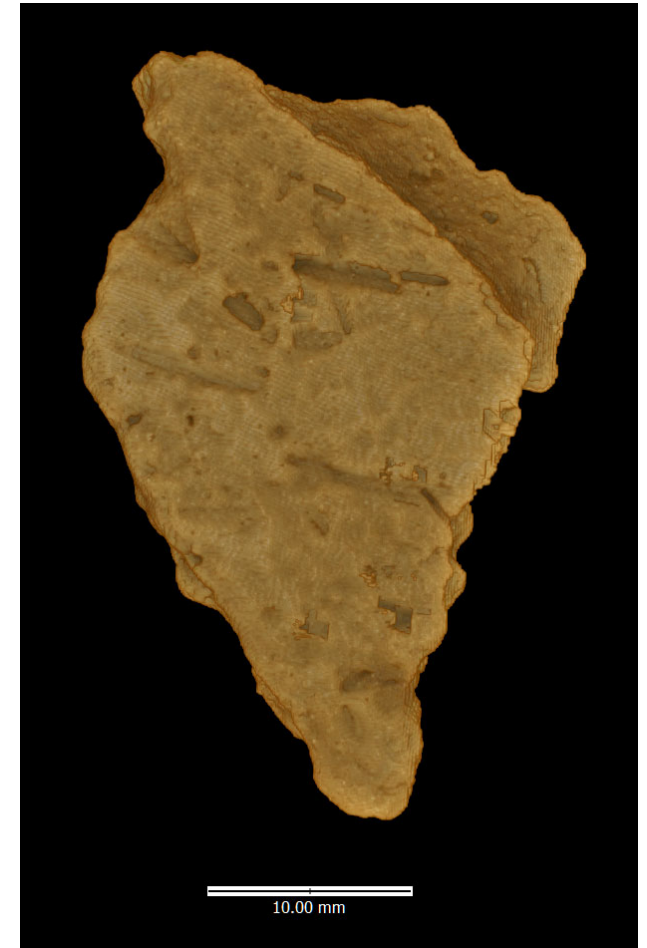


Sherd 587

No diagnostic organic
inclusions

Eroded surface
Indetermined decor

Surface érodée,
Décor non identifiable



Sherd 460

No diagnostic organic
inclusions

Eroded surface
Indetermined decor

Surface érodée,
Décor non identifiable



Sherd 1324

No diagnostic organic
inclusions

Décor:
Simple or pivoting impression A+B with
a rectilinear edge spatula

Impression simple ou pivotante avec
spatule à front droit

[https://lampea.cnrs.fr/cerafim/spip.php?
article238](https://lampea.cnrs.fr/cerafim/spip.php?article238)



AZ22

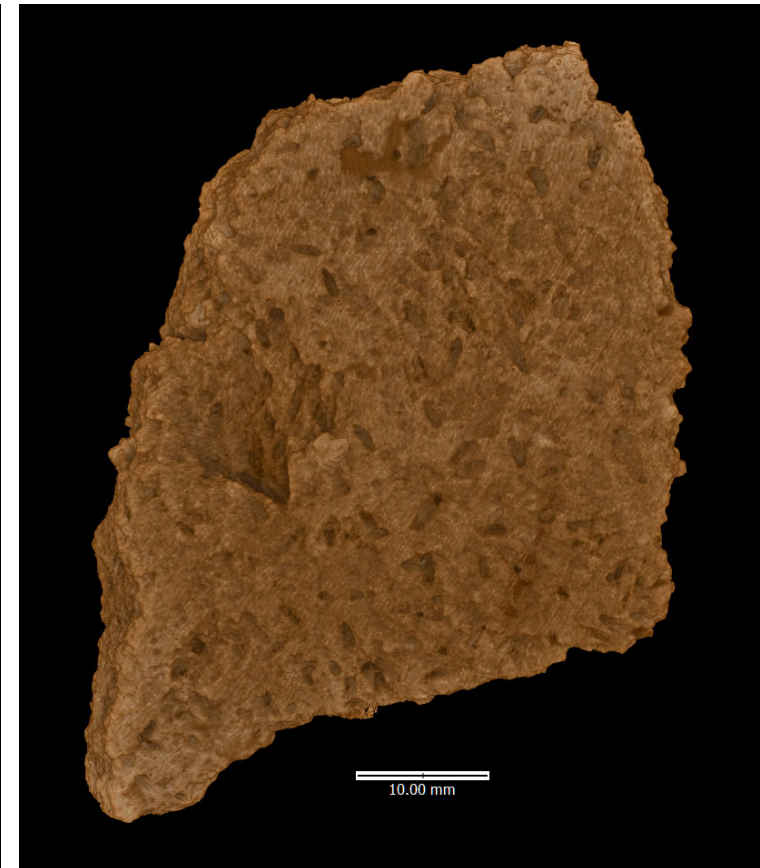
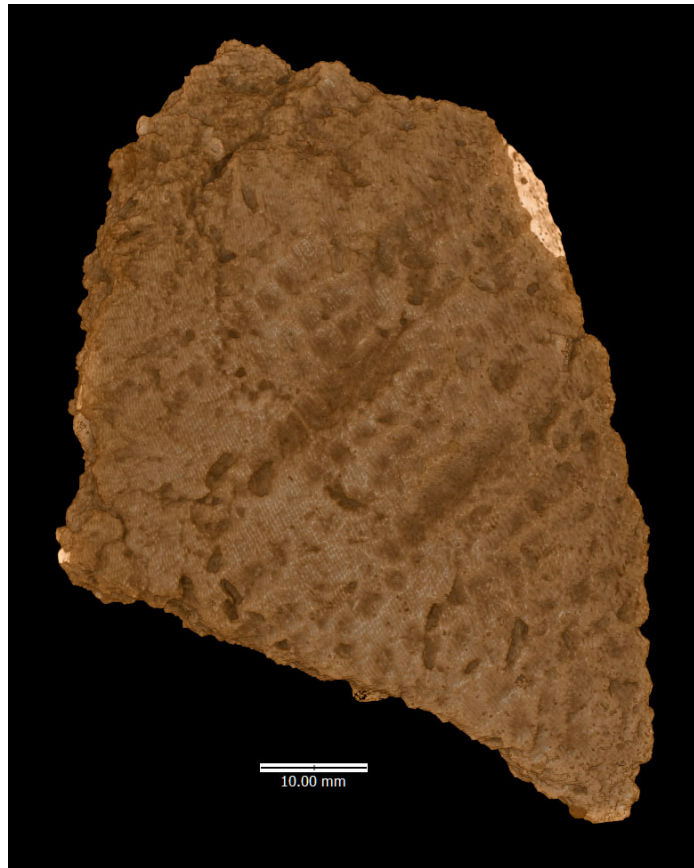
Sherd 27

Décor:

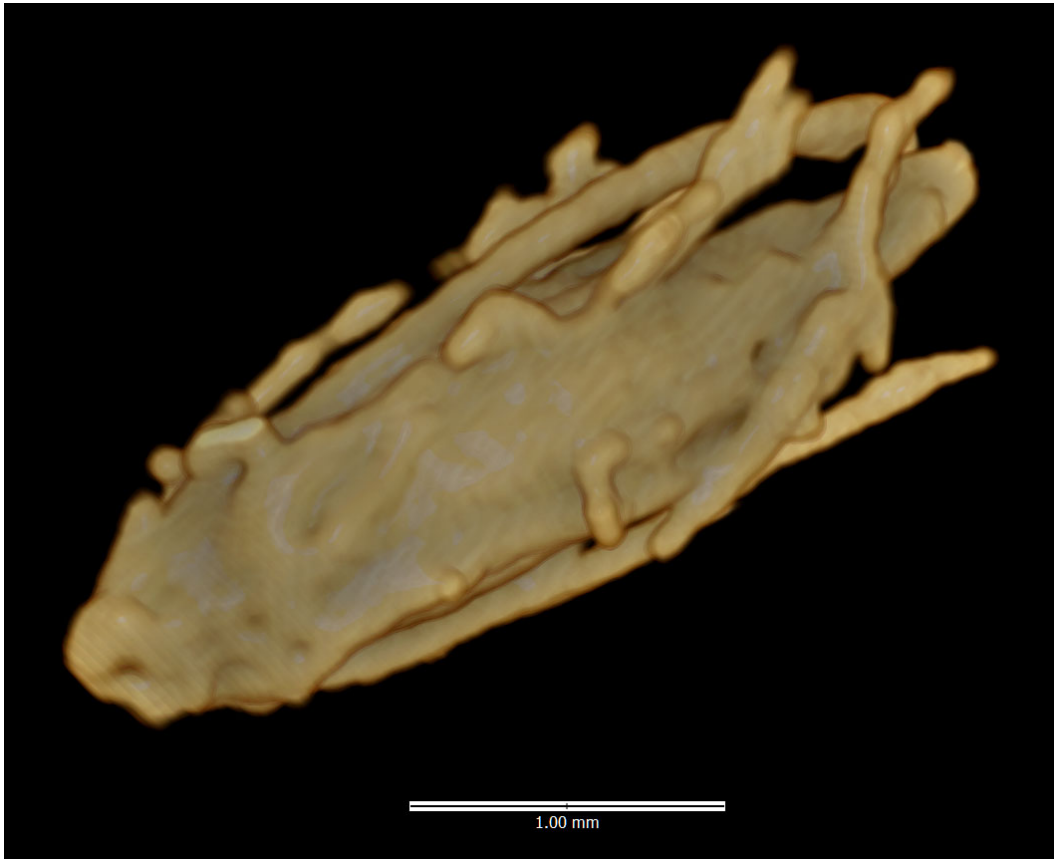
Pivoting impression A+B with a
multiple teeth (dashes) comb

Impression pivotante A+B avec
peigne à dents multiples plates

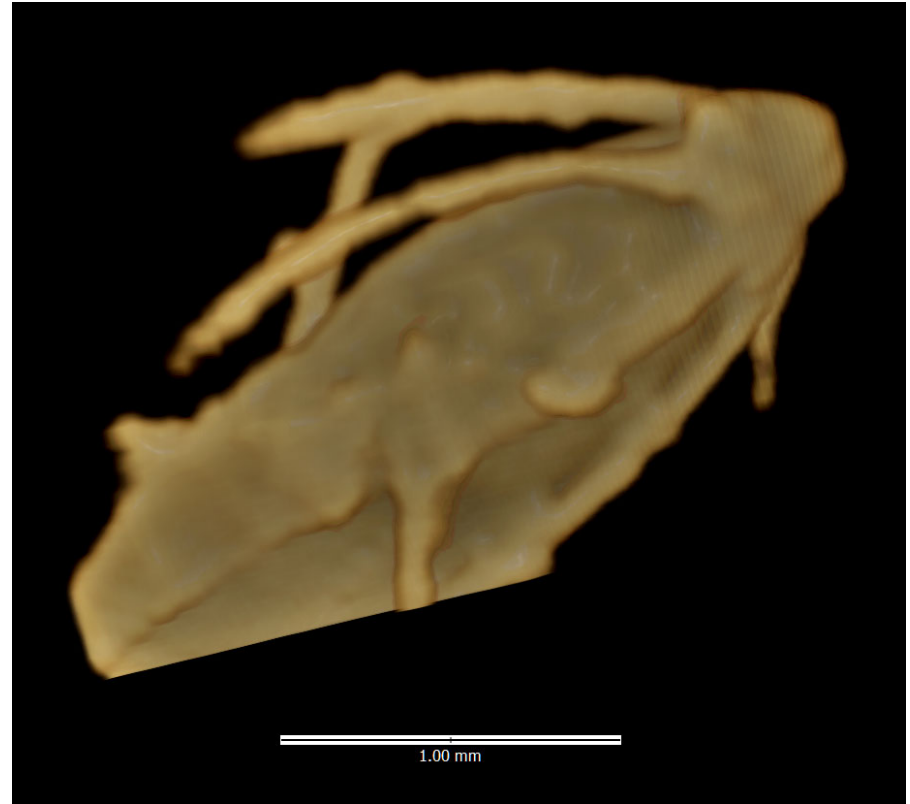
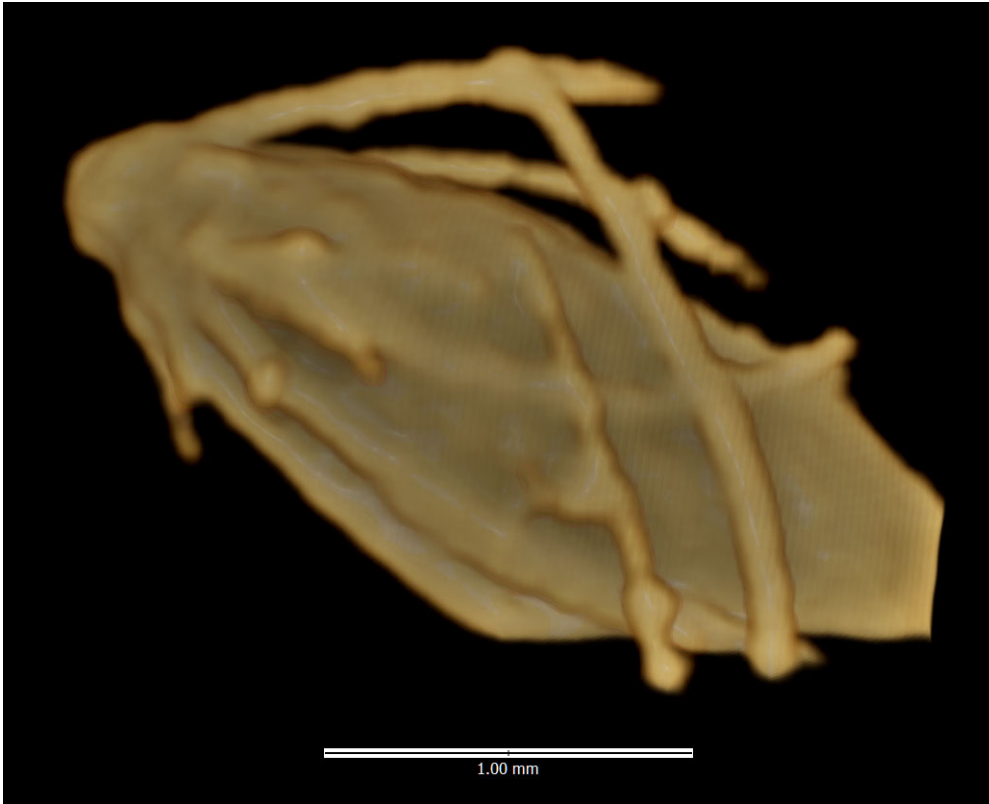
<https://lampea.cnrs.fr/cerafim/spip.php?article240>



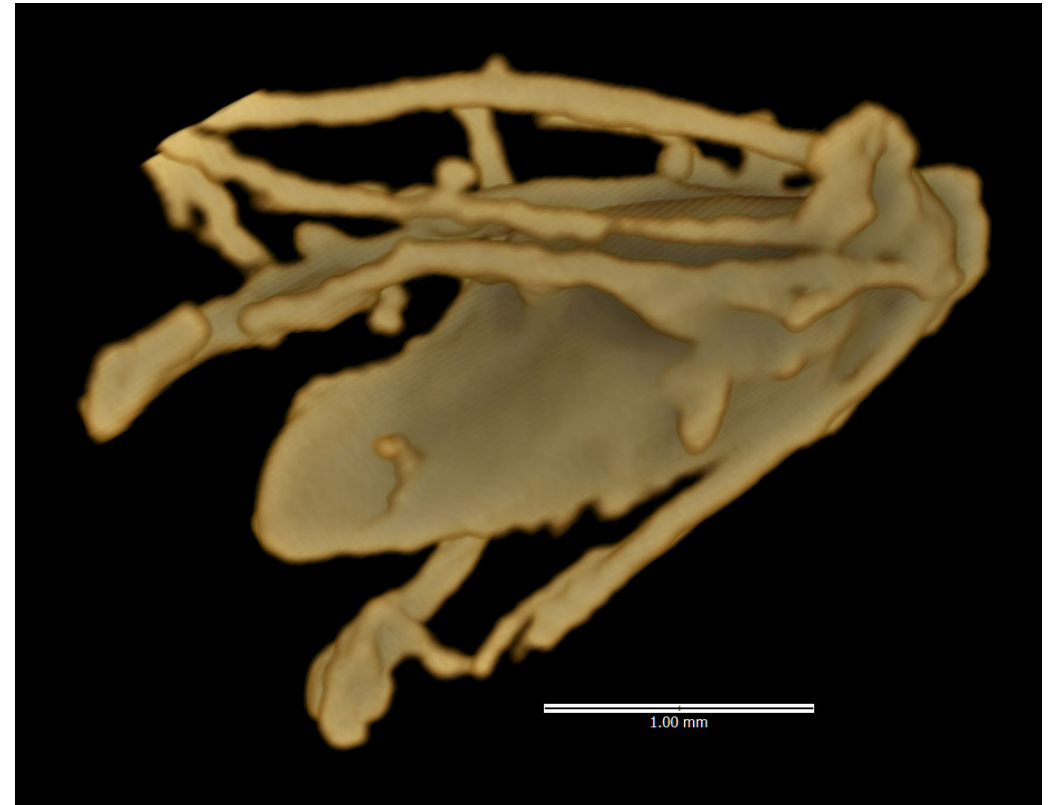
Inclusion 1. Two views: Sessile involucre, solitary spikelet



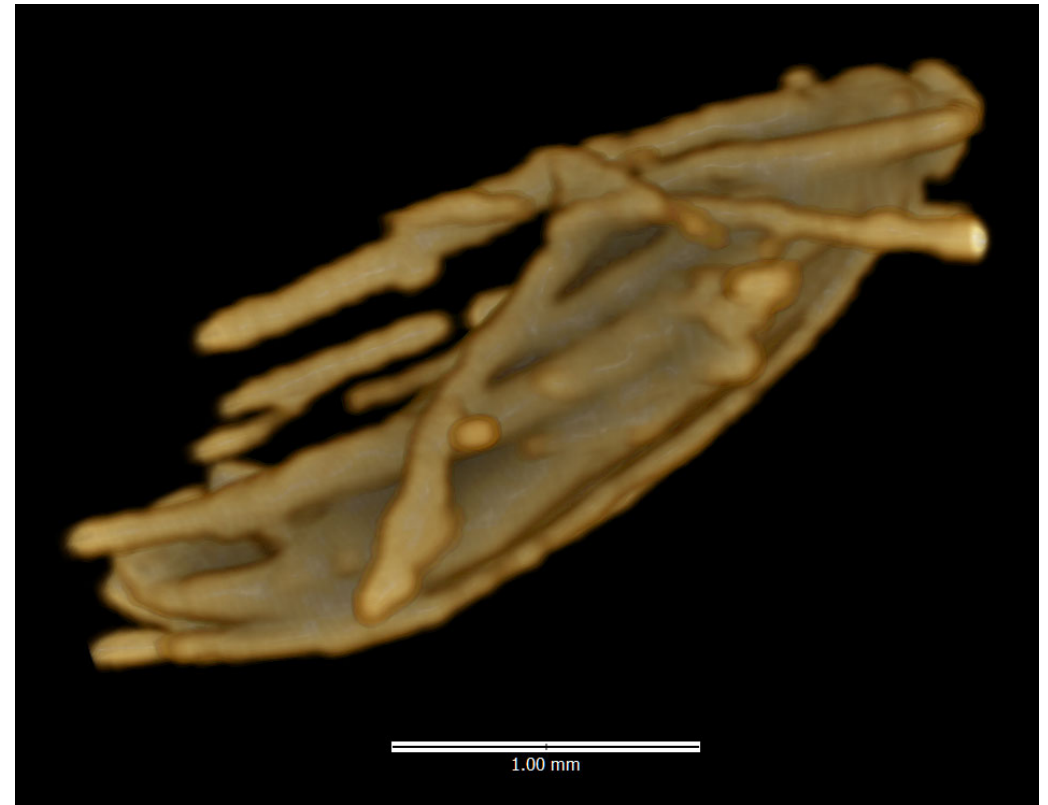
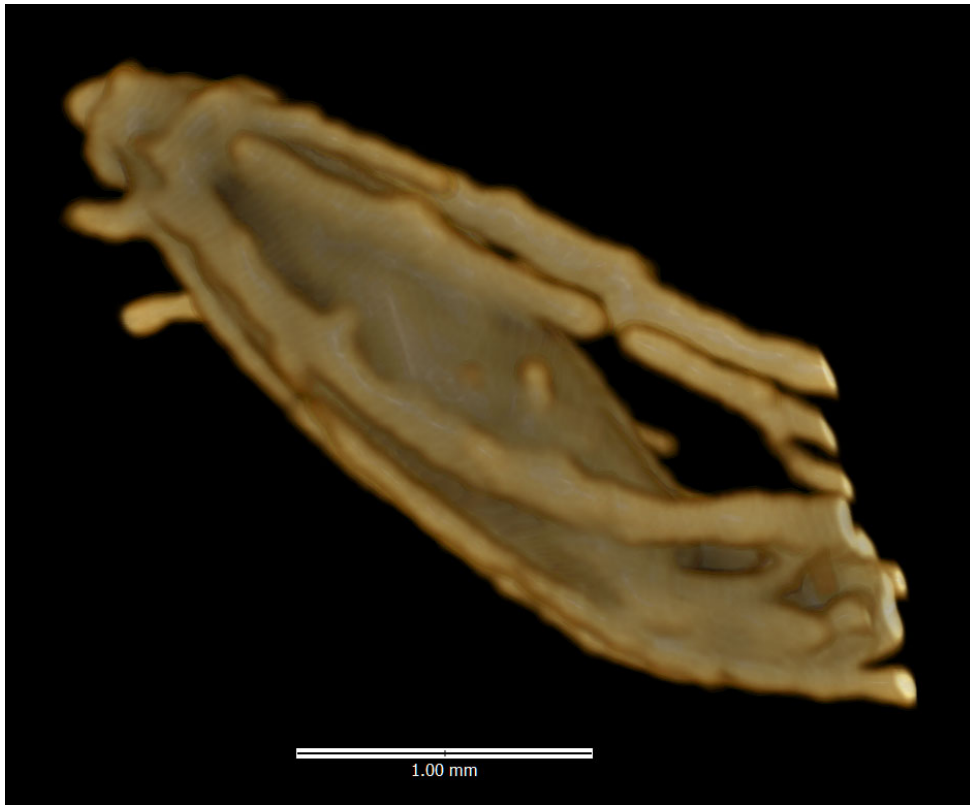
Inclusion 4a. Two views: Sessile involucre, solitary spikelet



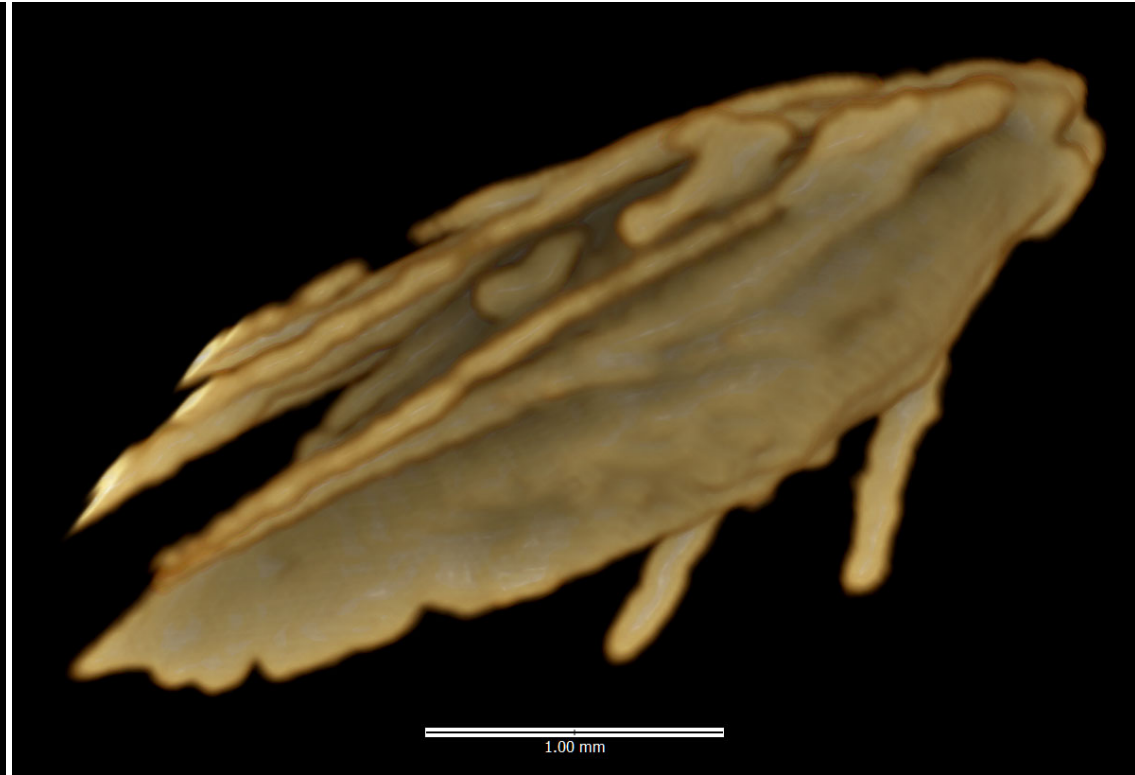
Inclusion 5. Two views: Sessile involucre, solitary spikelet



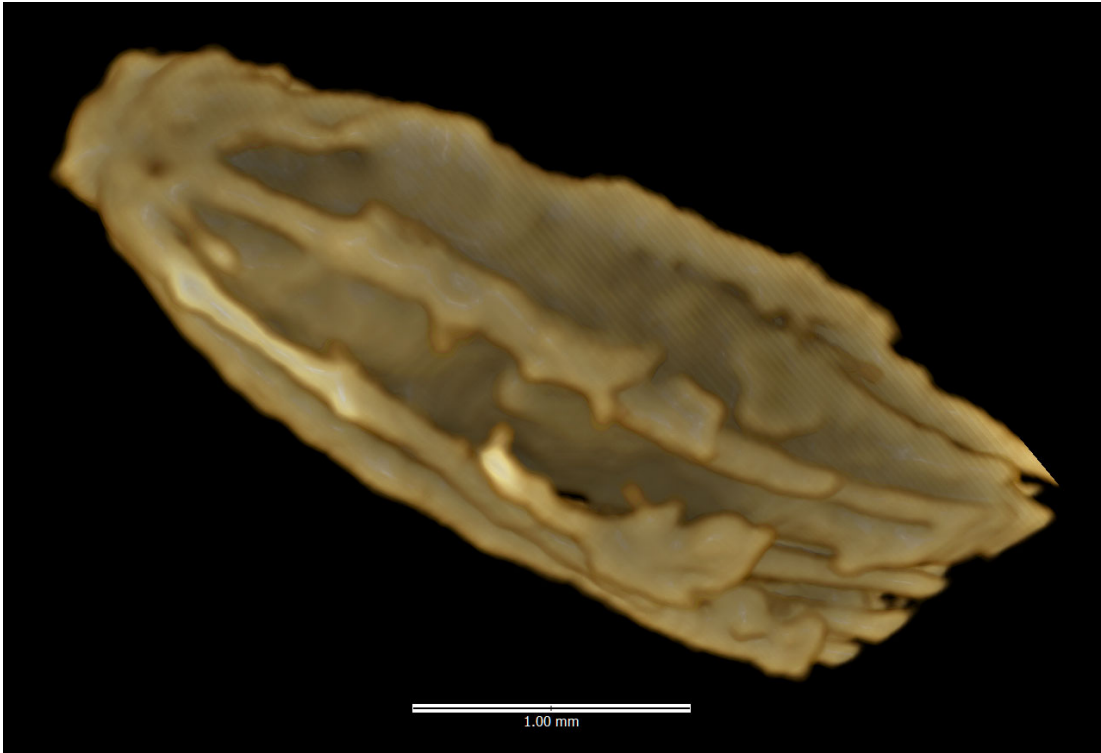
Inclusion 7. Two views: Sessile involucre, solitary spikelet



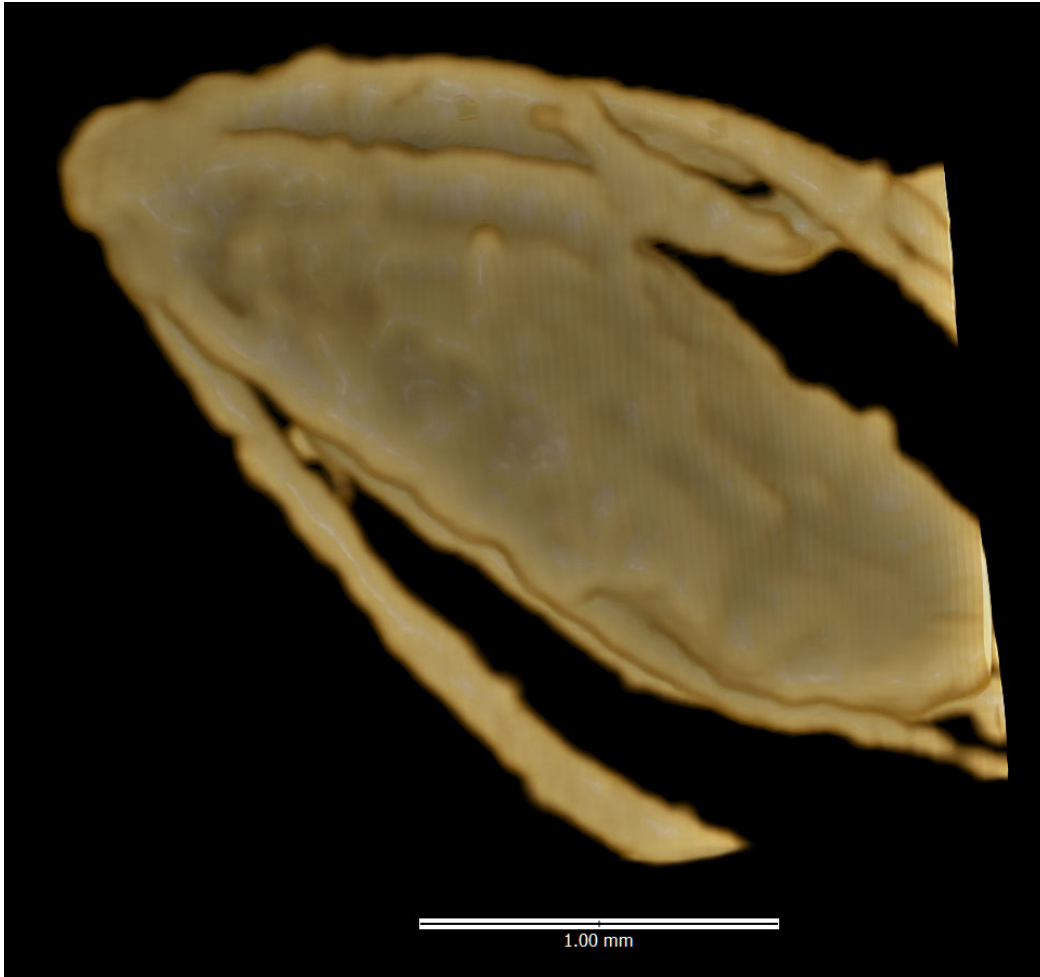
Inclusion 8. Two views: Sessile involucre, solitary spikelet



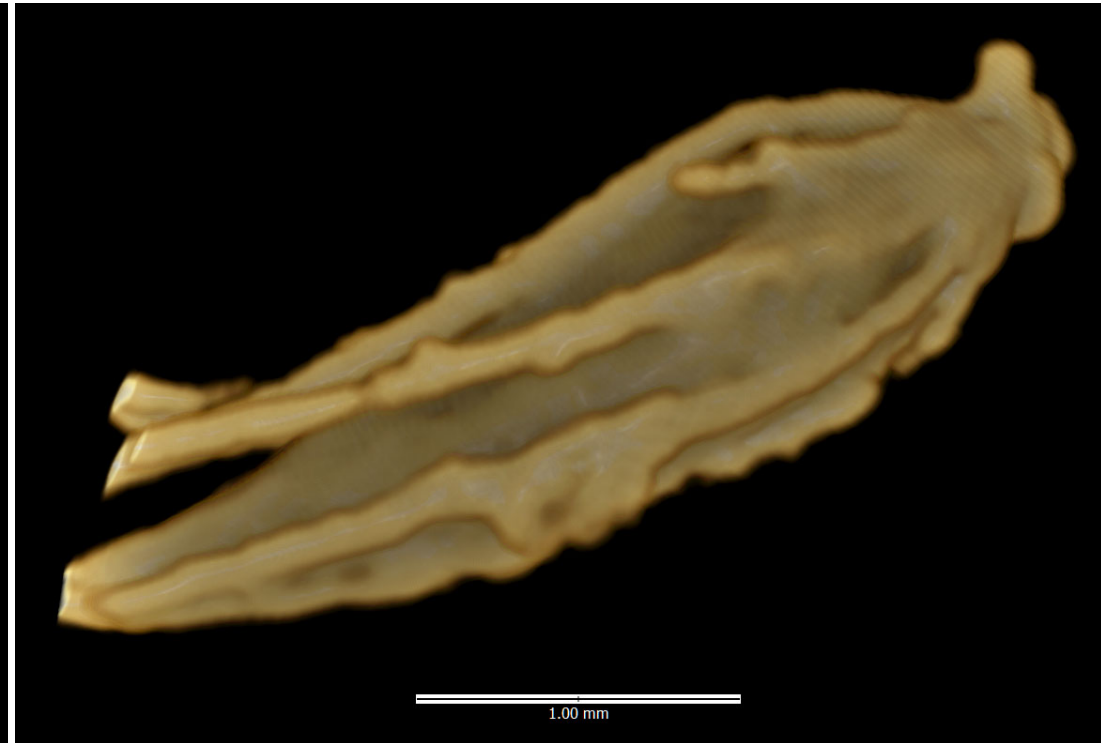
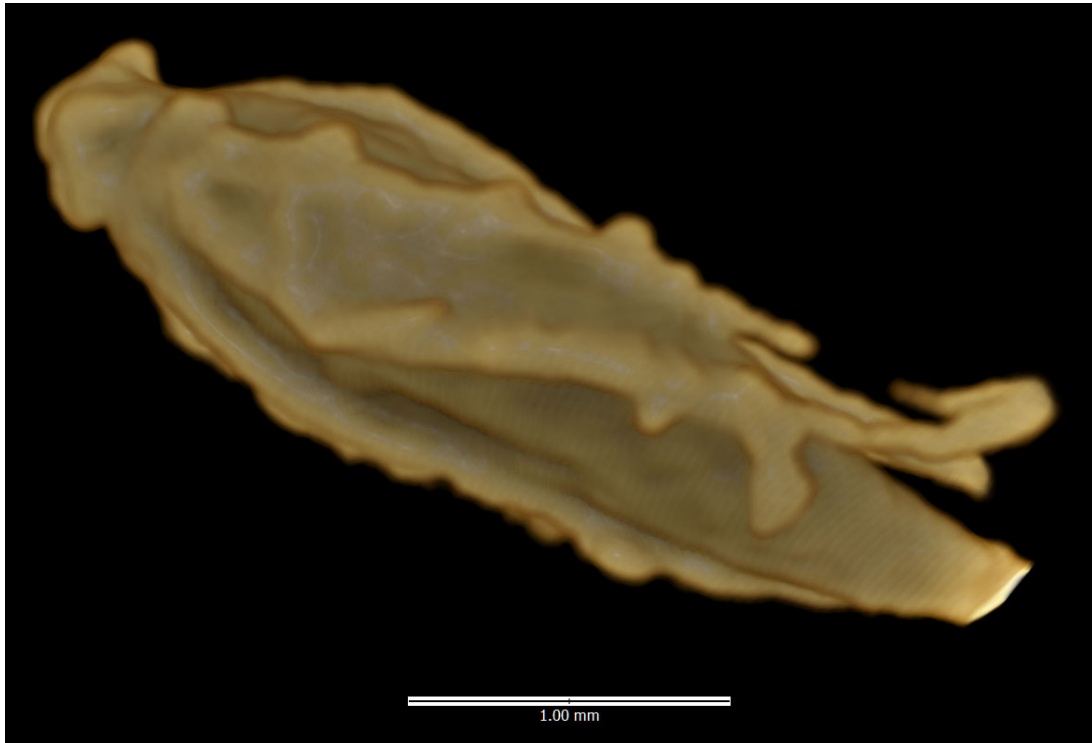
Inclusion 9. Two views: Sessile involucre, solitary spikelet



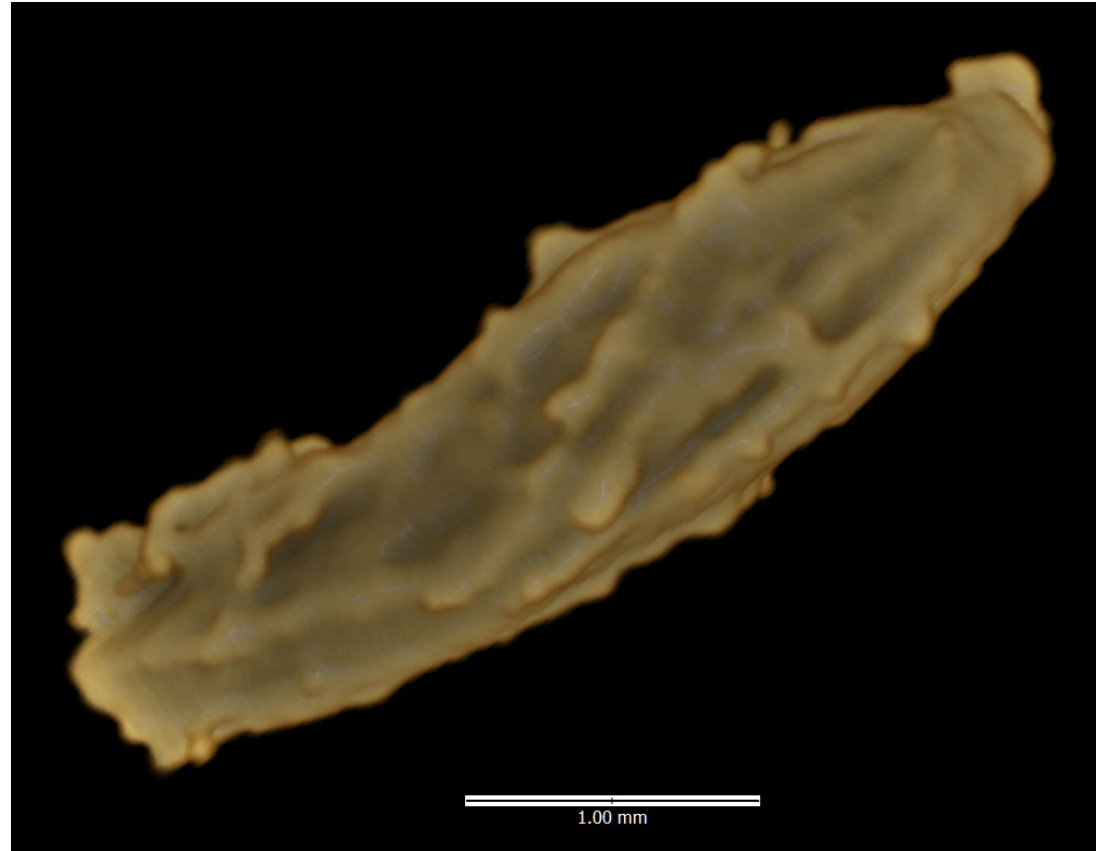
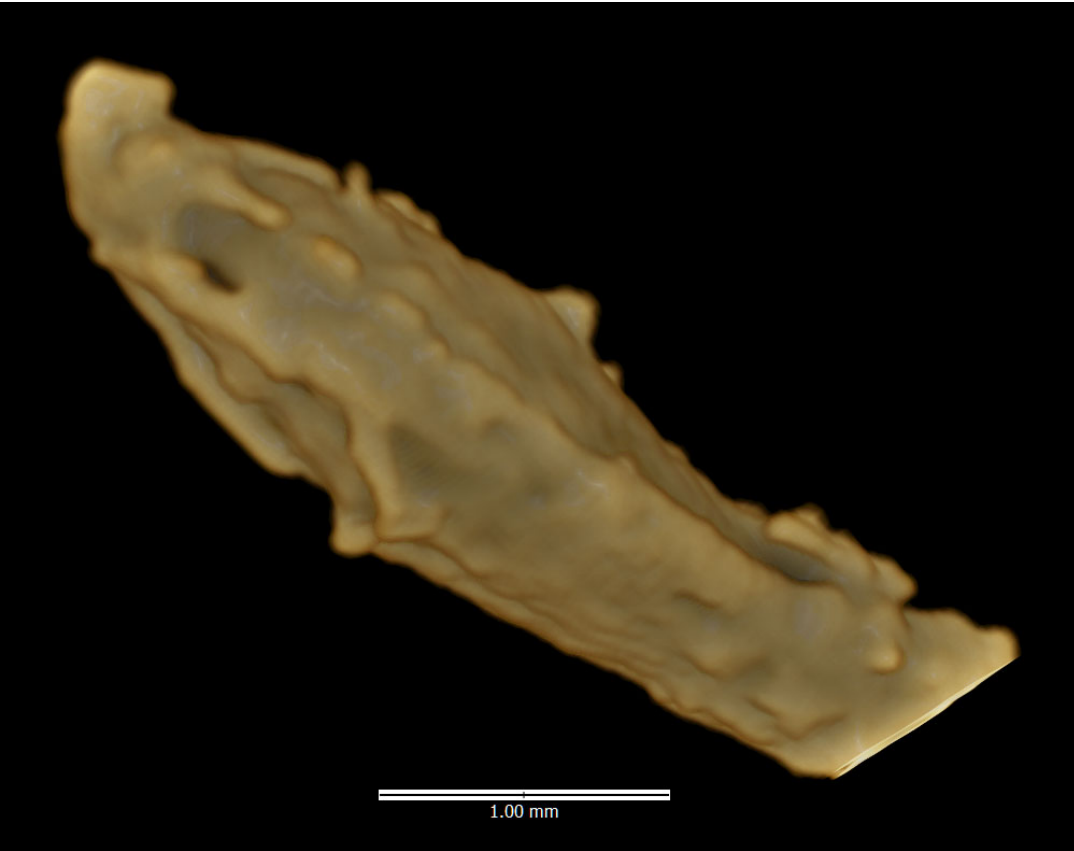
Inclusion 11. Two views: Sessile involucre, solitary spikelet



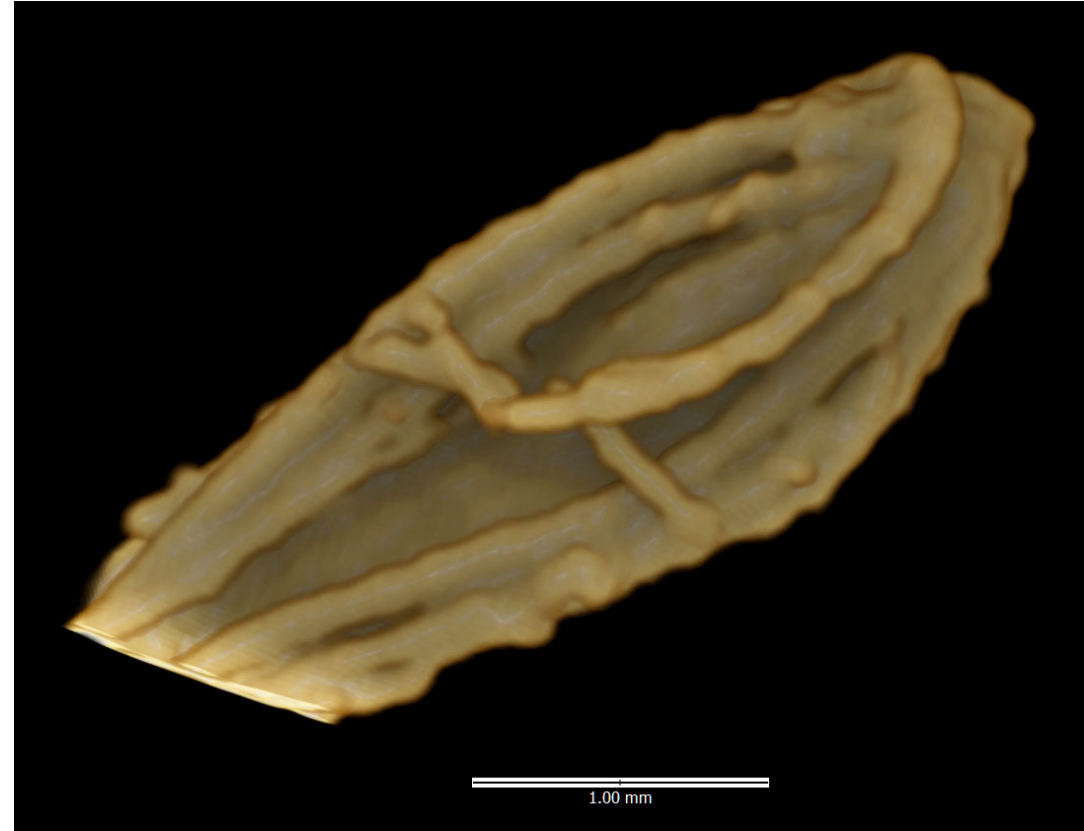
Inclusion 12. Two views: Sessile involucre, solitary spikelet



Inclusion 13. Two views: Sessile involucre, solitary spikelet



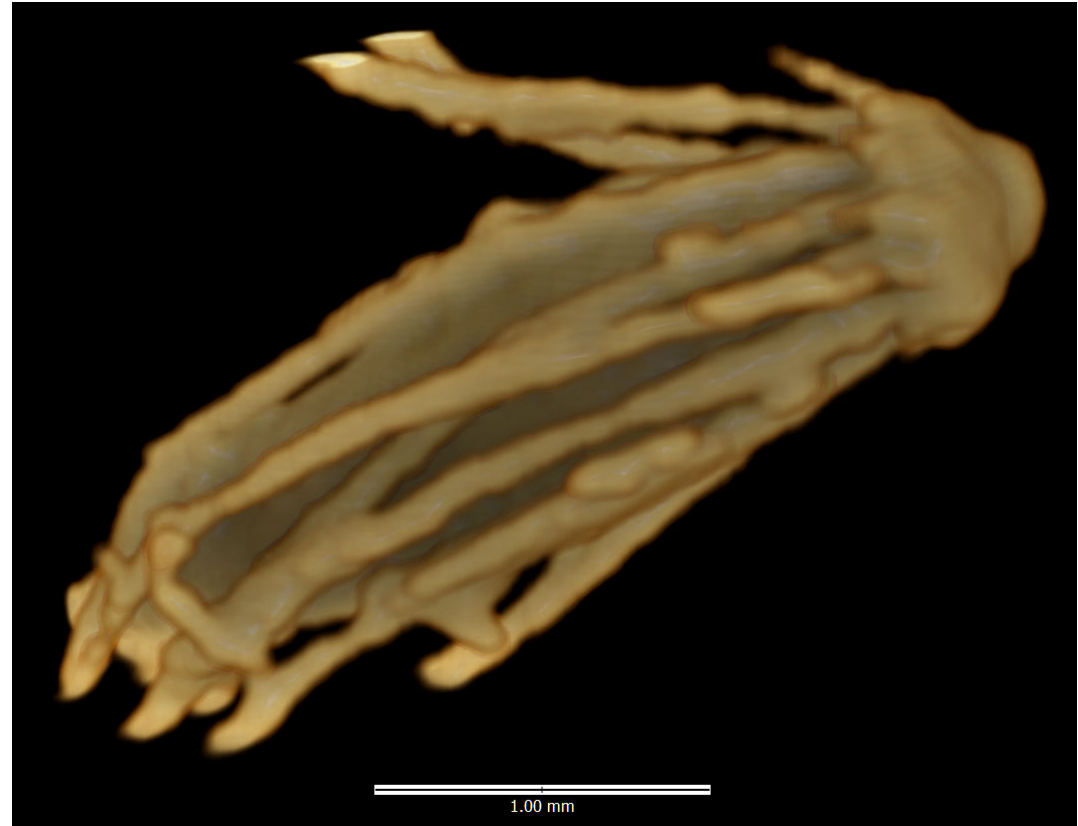
Inclusion 14. Two views: Sessile involucre, solitary spikelet



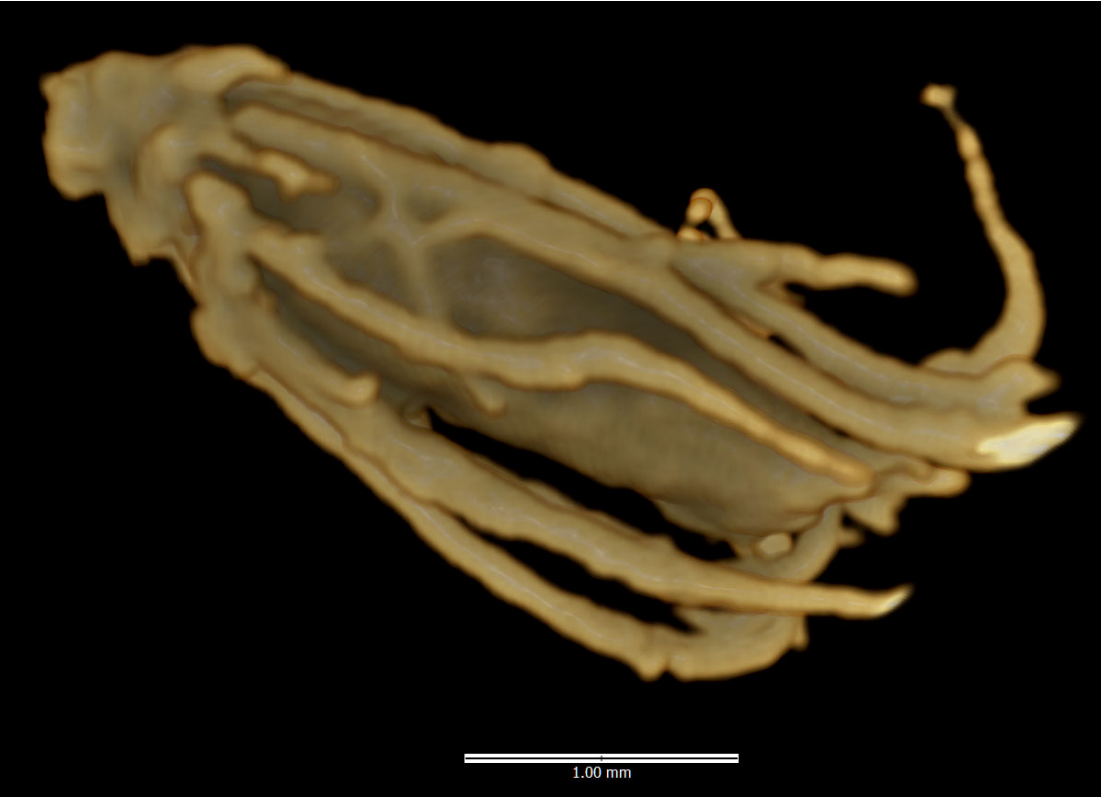
Inclusion 15. Two views: Sessile involucre, solitary spikelet



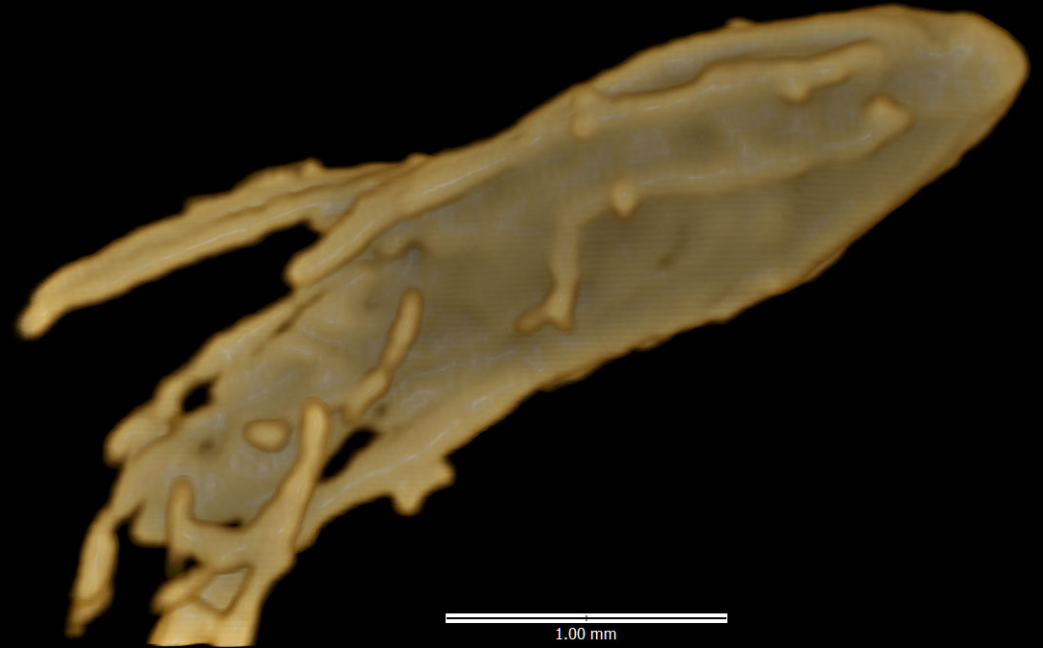
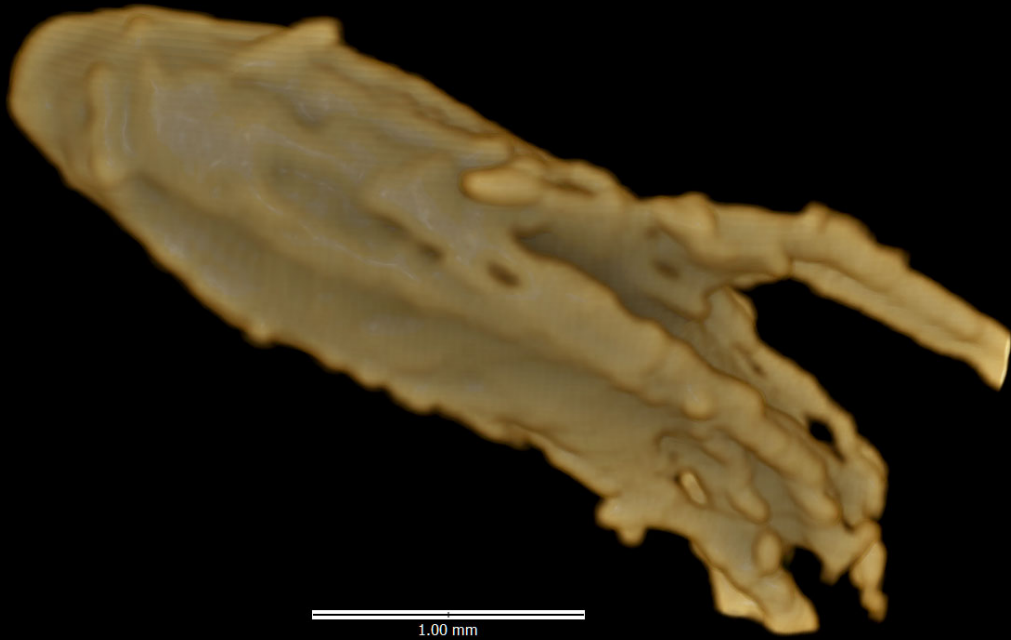
Inclusion 16. Two views: Sessile involucre, solitary spikelet



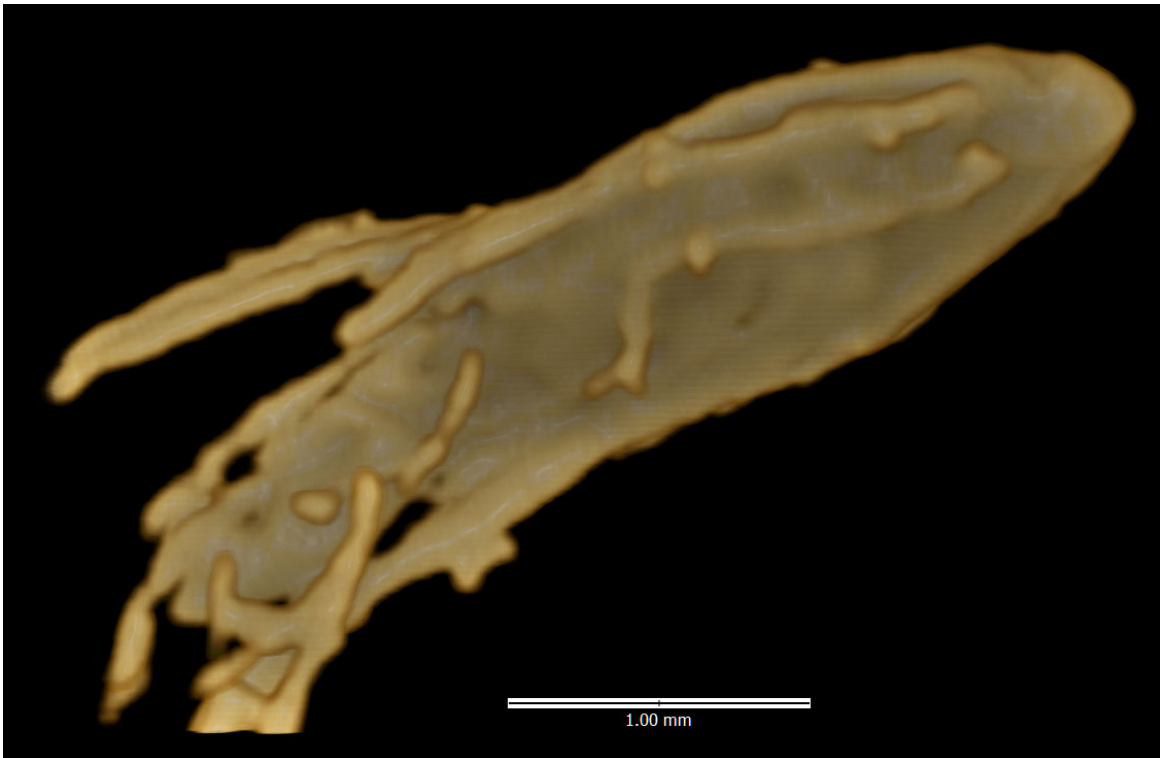
Inclusion 17. Two views: Sessile involucre, solitary spikelet



Inclusion 19. involucre, indeterminate attachment, solitary spikelet



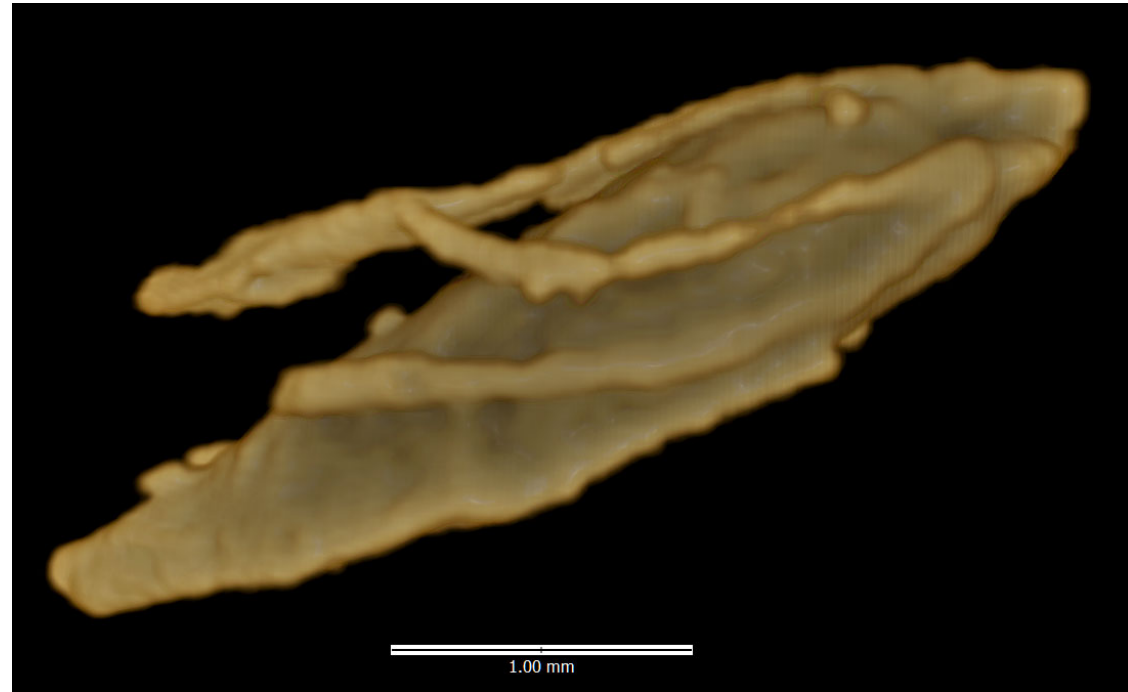
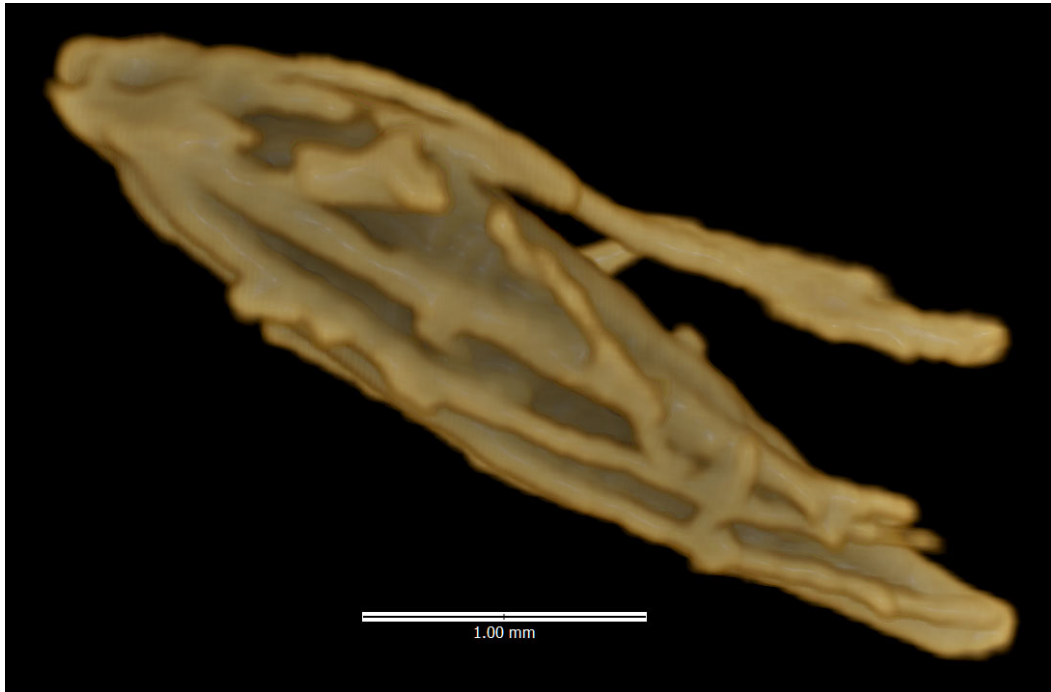
Inclusion 20. involucre, indeterminate attachment, solitary spikelet



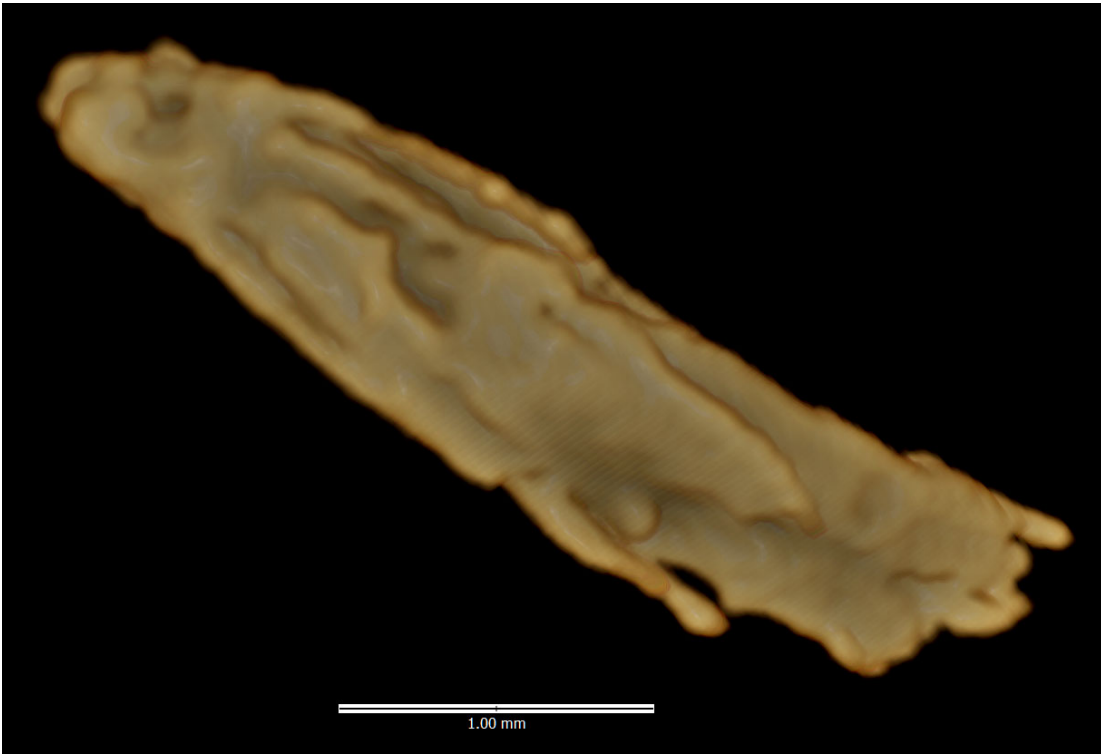
Inclusion 21. Two views: Sessile involucre(?), solitary spikelet. This specimen shows some elongation that could indicate formation of a peduncle, but it is within the range of likely variation in sessile specimens with some additional torn culm tissue (i.e. if harvested slightly green).



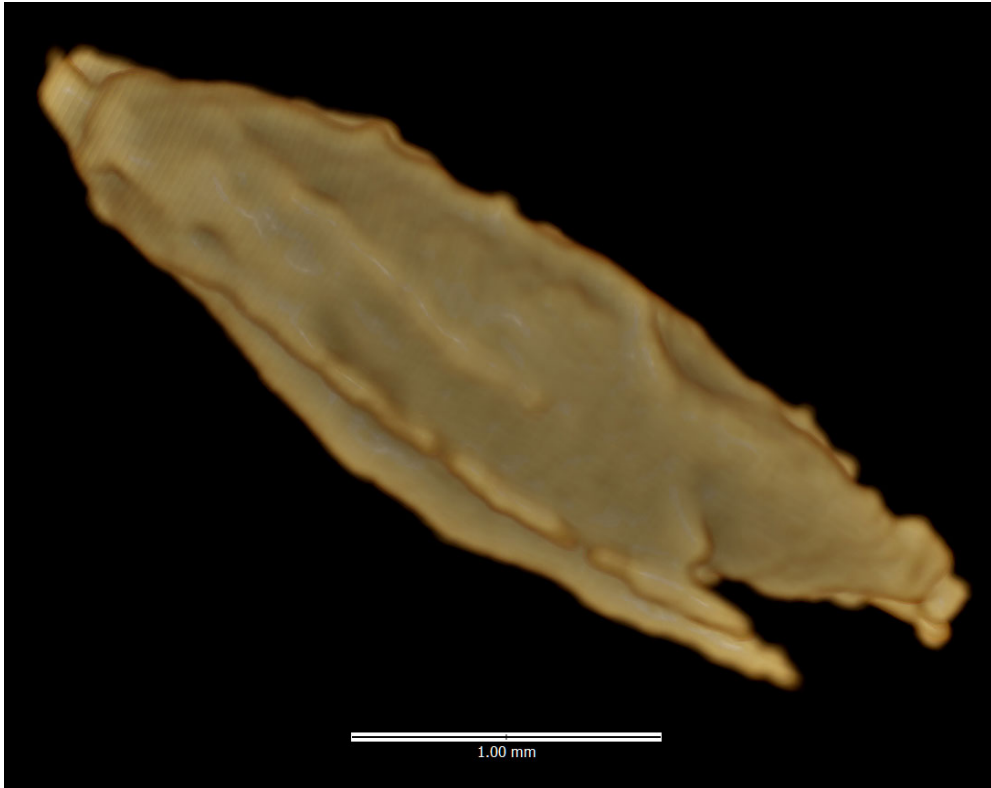
Inclusion 22. Two views: Sessile involucre, solitary spikelet



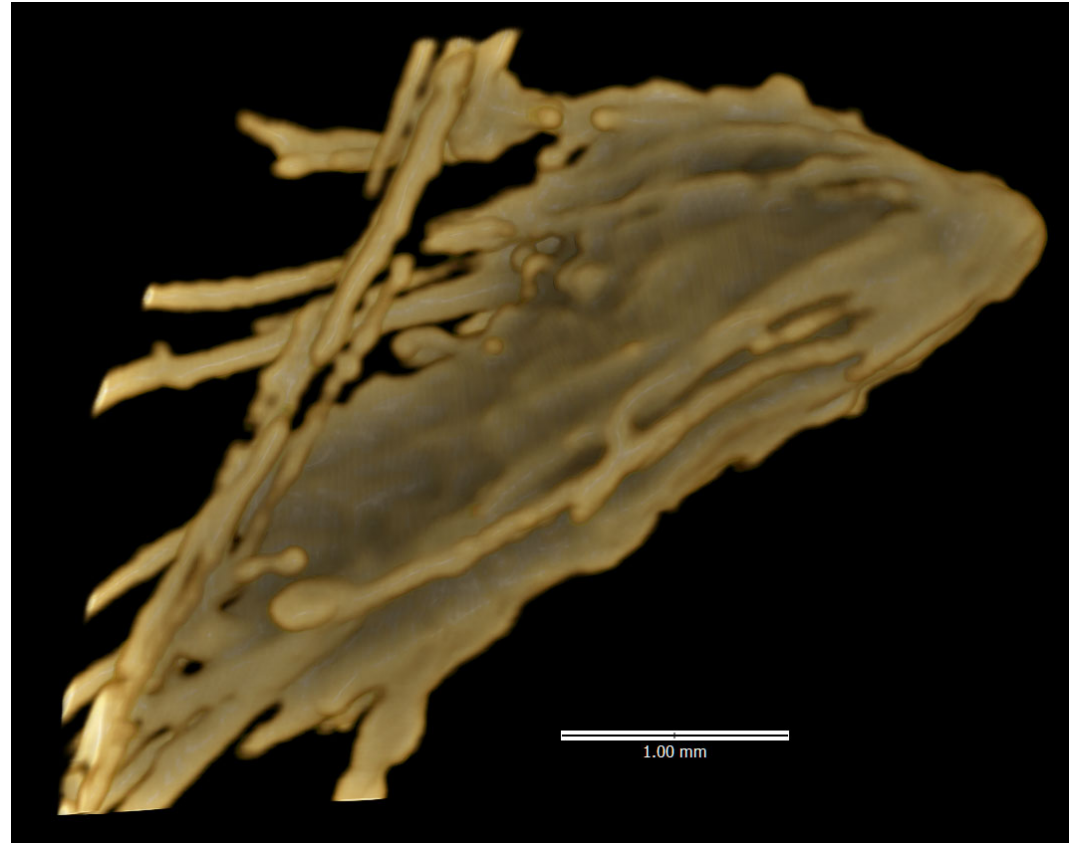
Inclusion 23. Two views: Sessile involucre, solitary spikelet



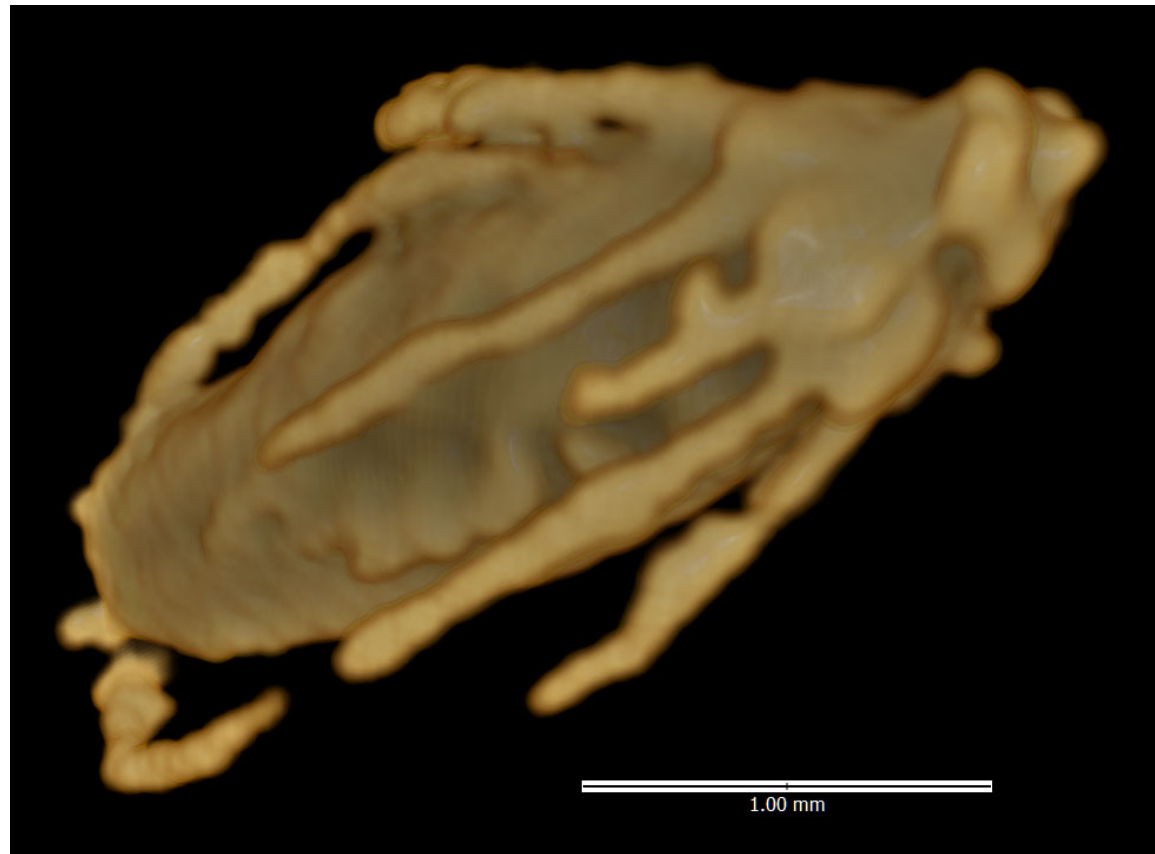
Inclusion 24. Two views: Sessile involucre, solitary spikelet



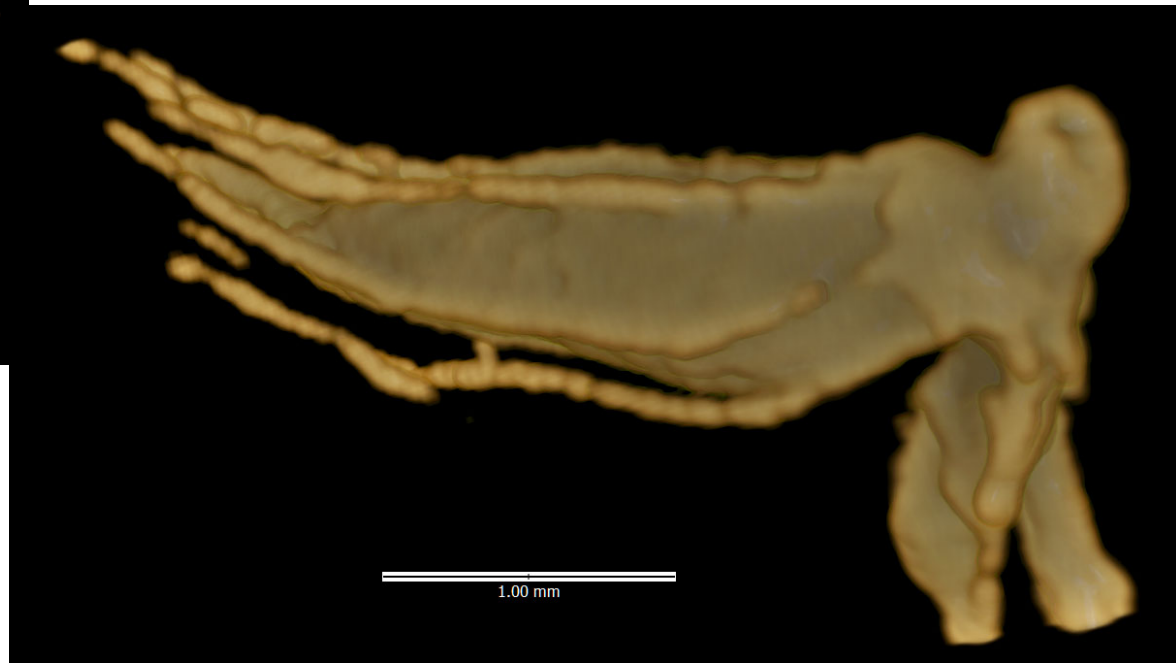
Inclusion 25



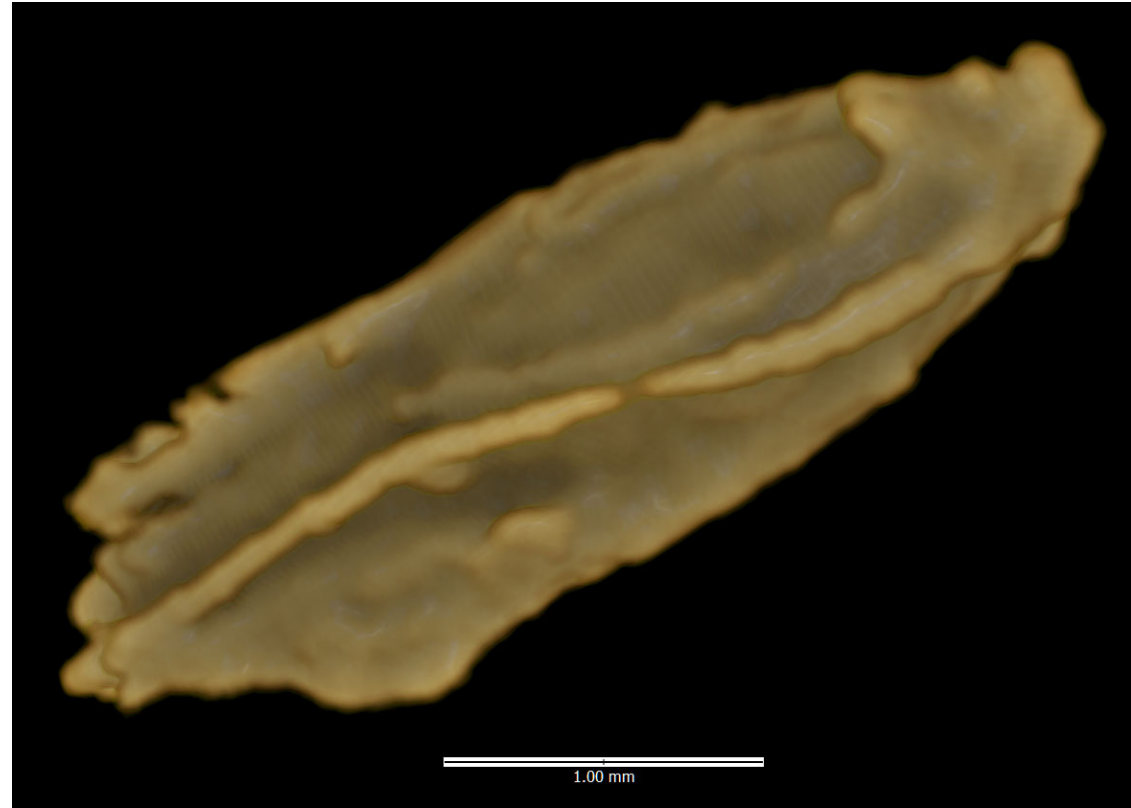
Inclusion 26. Two views: Sessile involucre, solitary spikelet



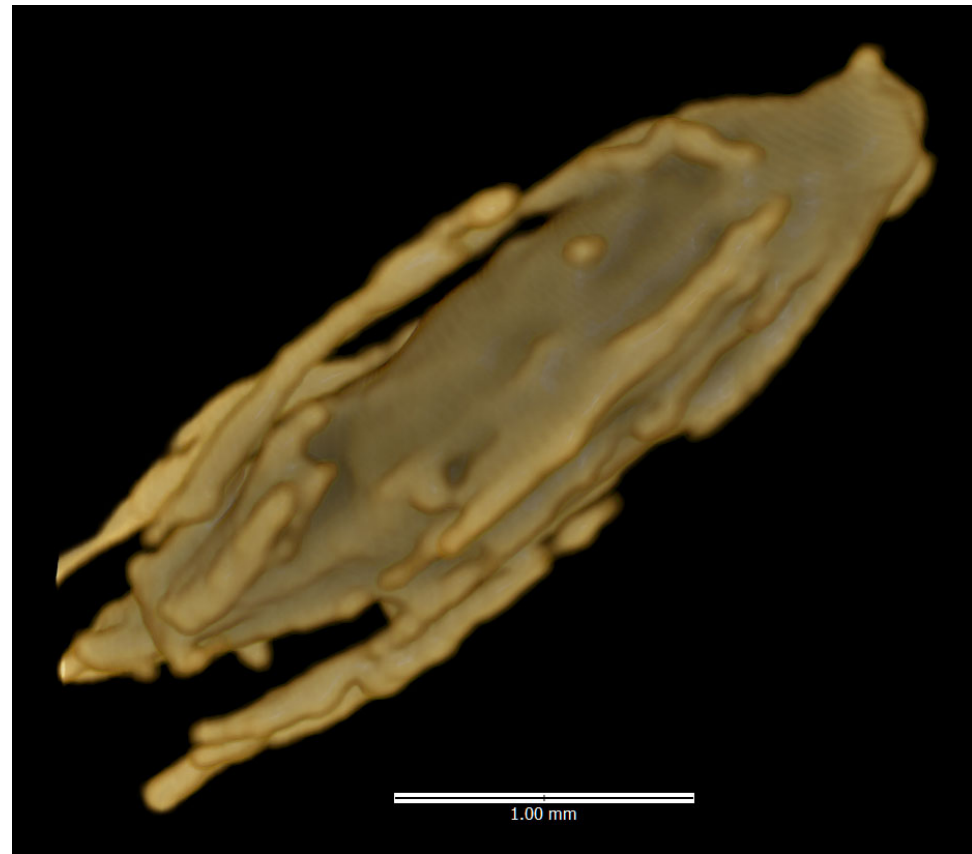
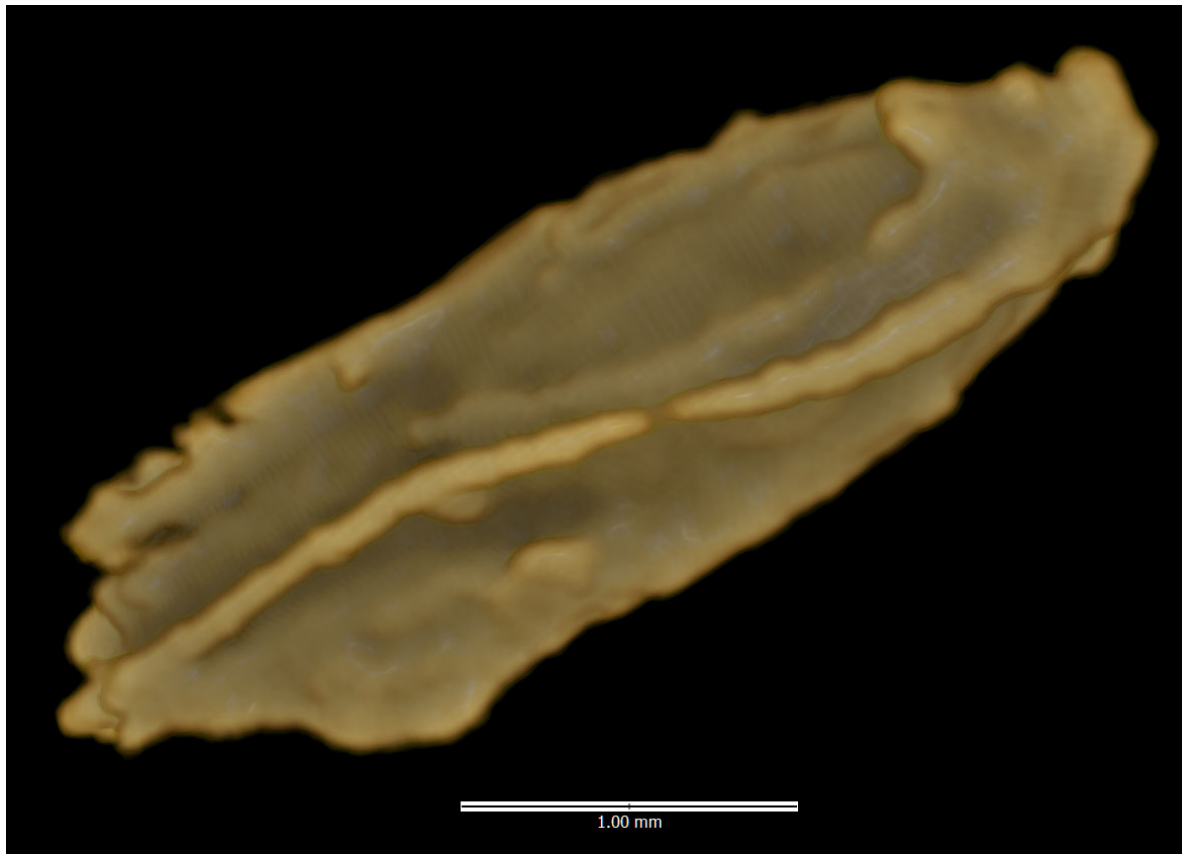
Inclusion 27. Two views: Sessile involucre, solitary spikelet



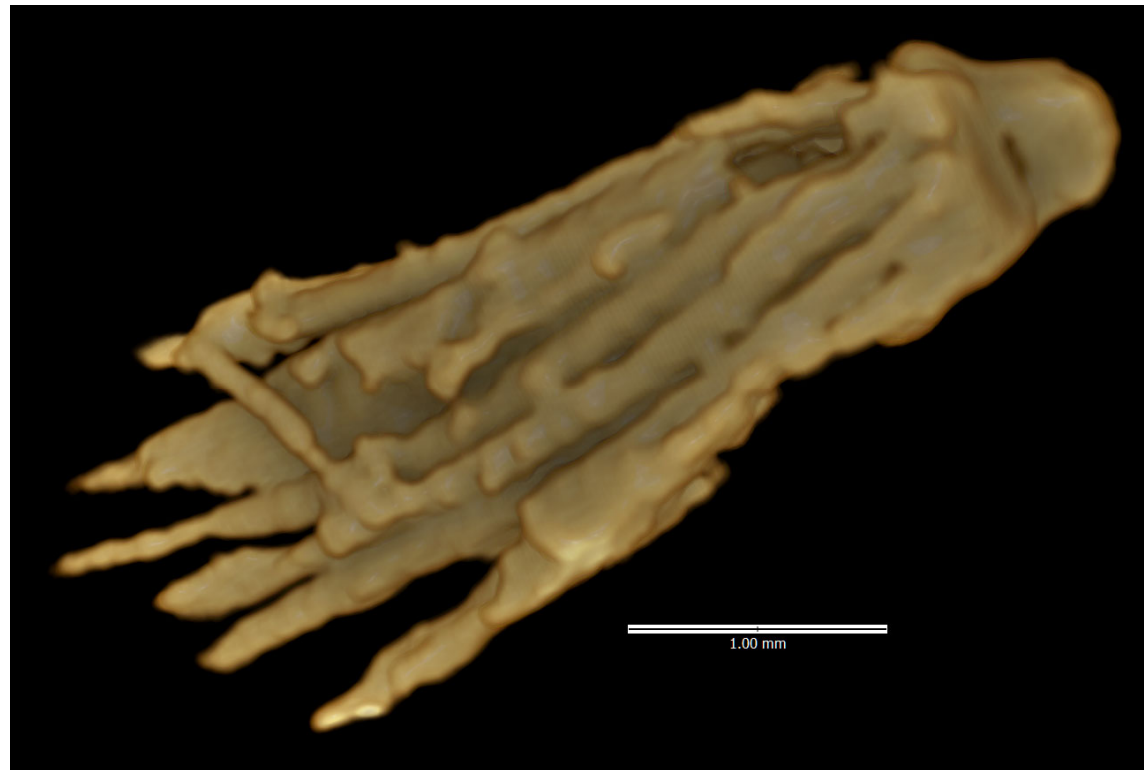
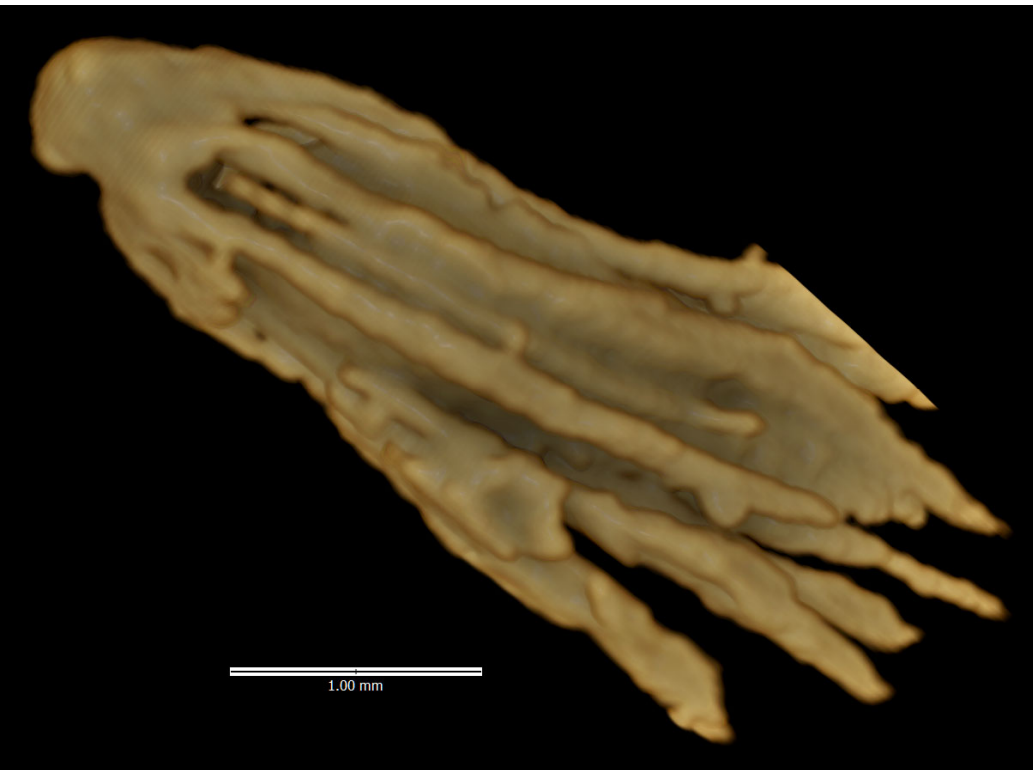
Inclusion 28. Two views: Sessile involucre, solitary spikelet



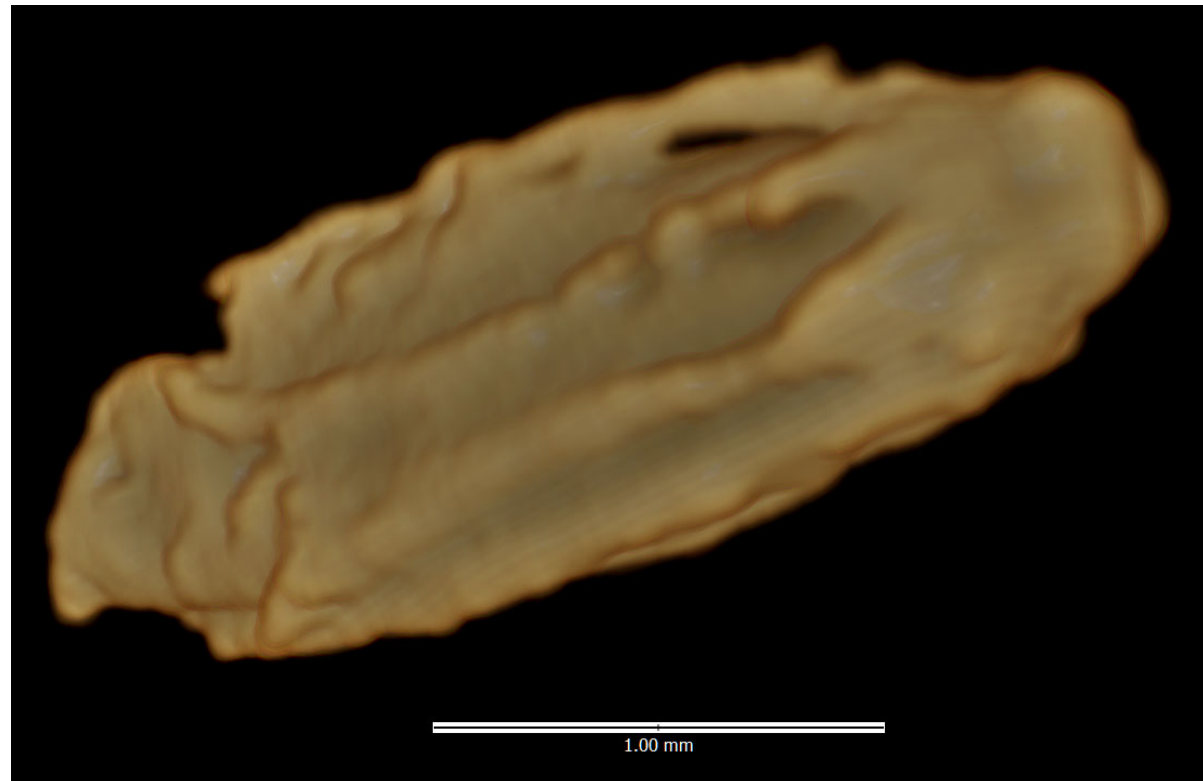
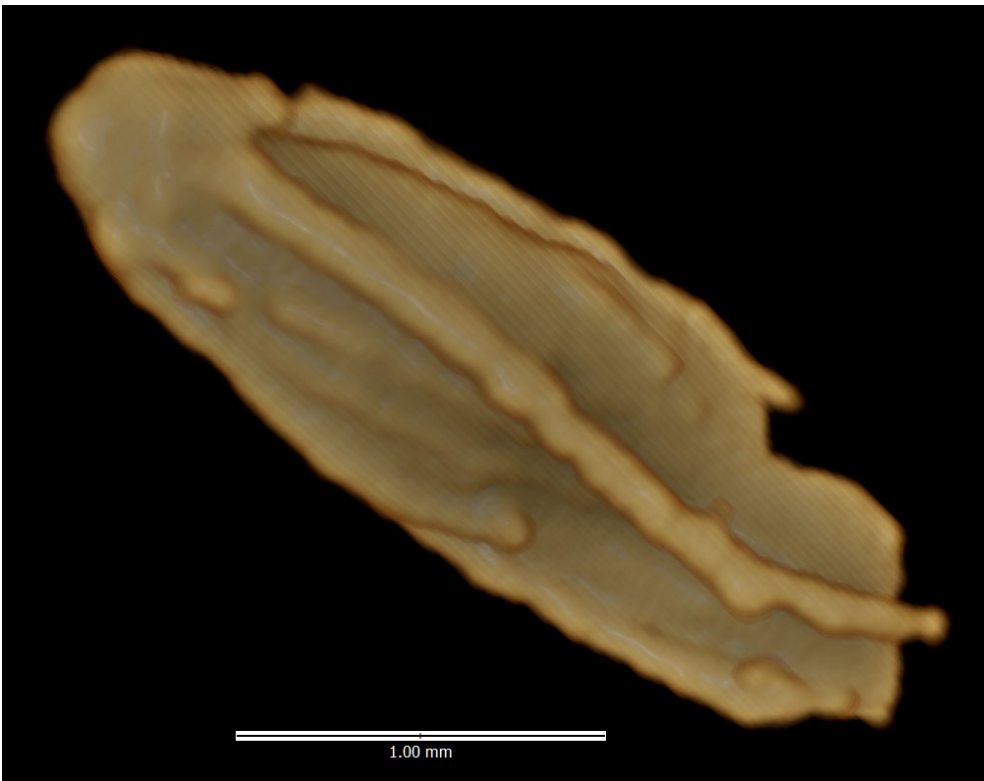
Inclusion 29. Two views: Sessile involucre, solitary spikelet



Inclusion 30. Two views: Sessile involucre, solitary spikelet



Inclusion 32. Two views: involucre, indeterminate attachment, solitary spikelet



Inclusion 33. Two views: Sessile involucre, solitary spikelet



1.00 mm



1.00 mm

Inclusion 34. Two views: Sessile involucre, solitary spikelet



Inclusion 35. Two views: Sessile involucre, solitary spikelet



Inclusion 36. Two views: Sessile involucre, solitary spikelet

