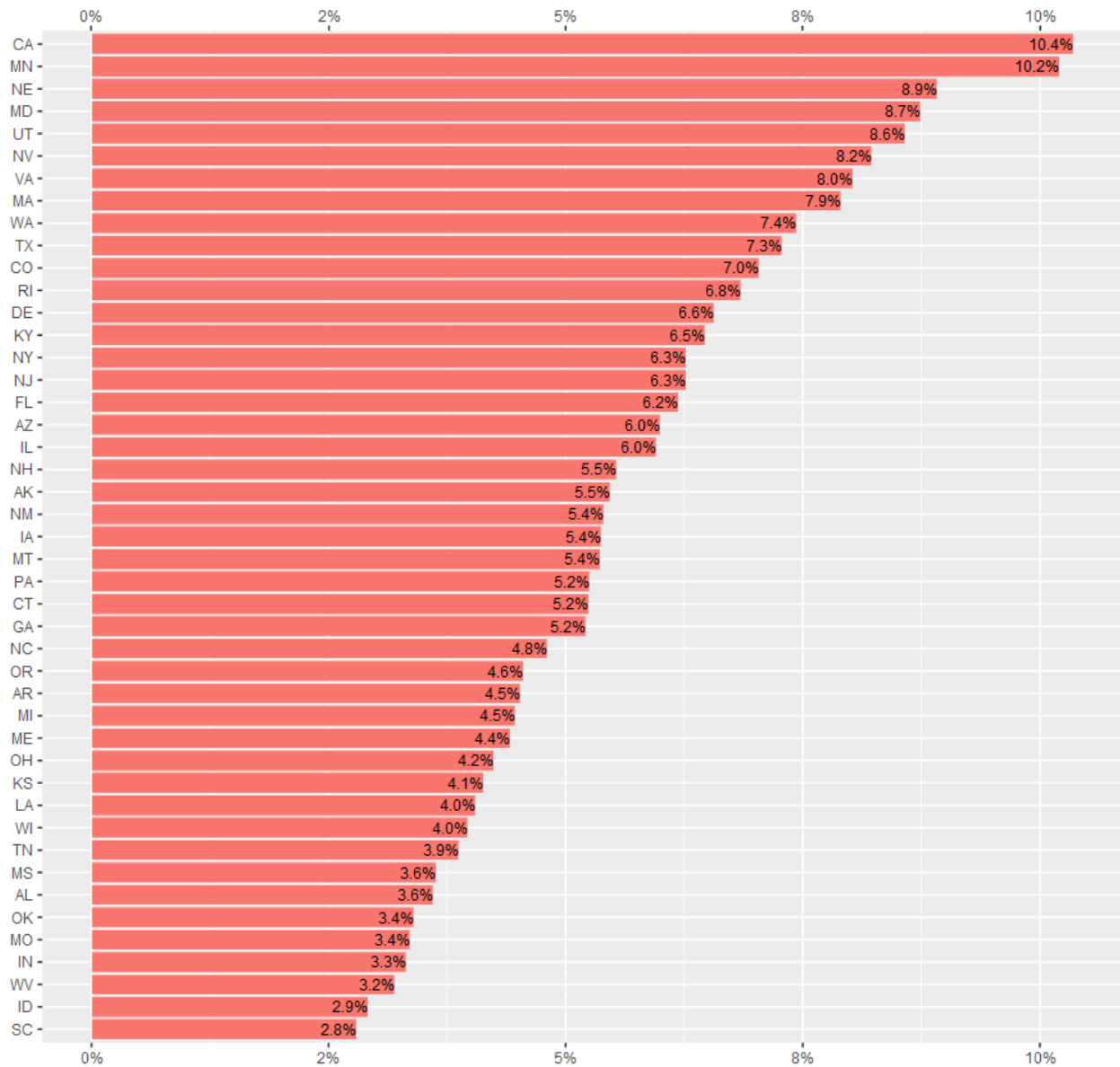
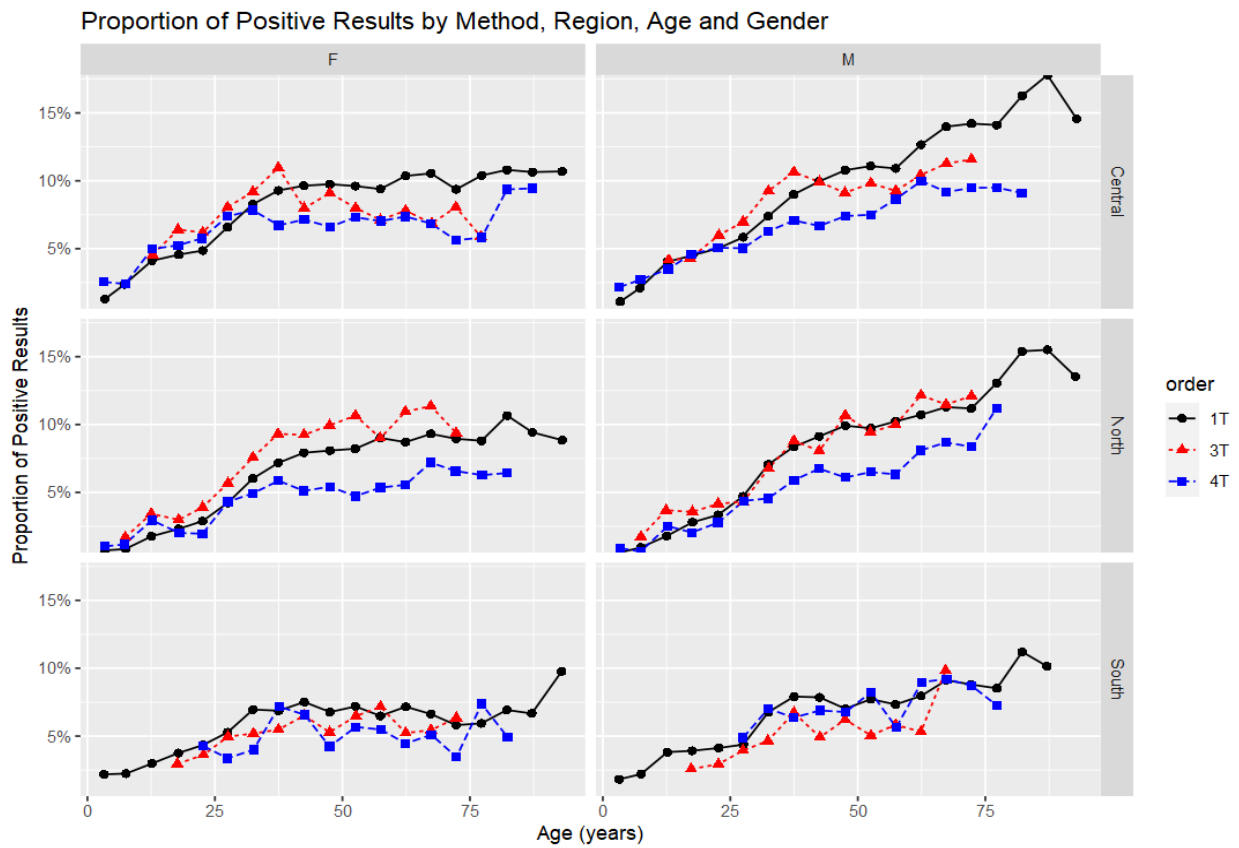


Online Supplementary Material

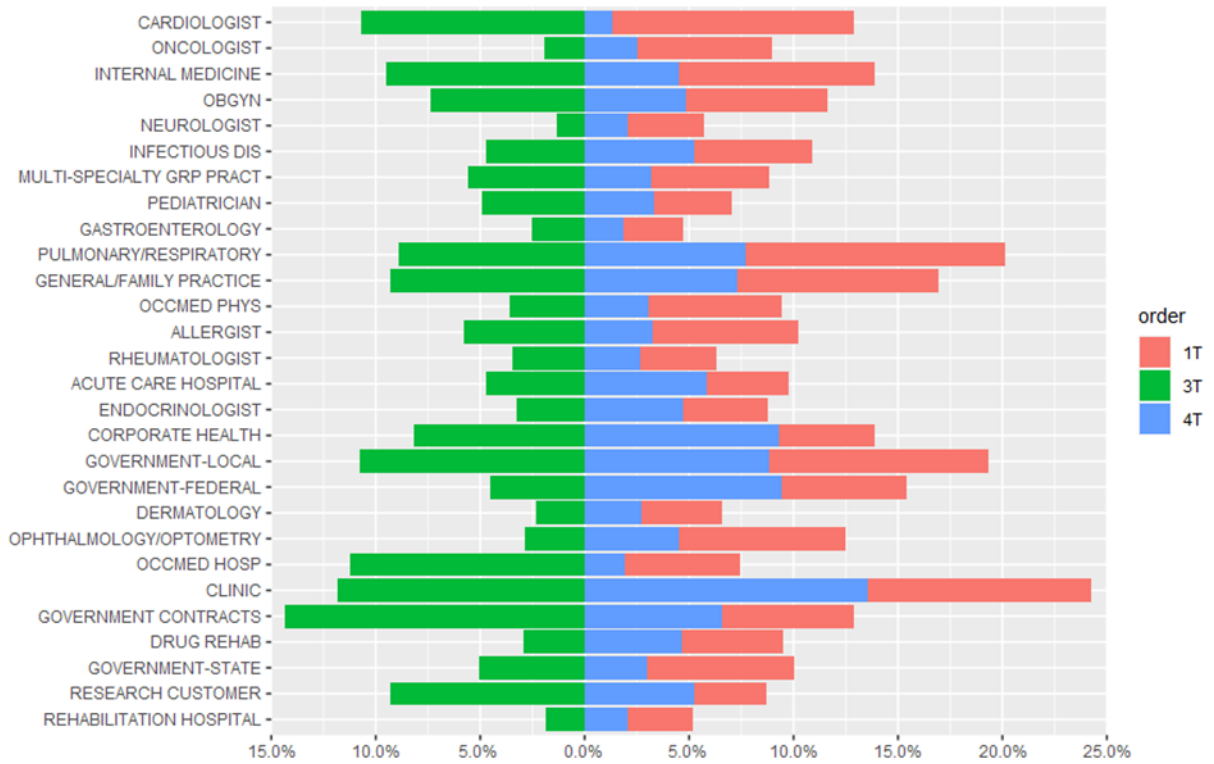
Supplemental Fig. 1. QFT proportion of positive results by state



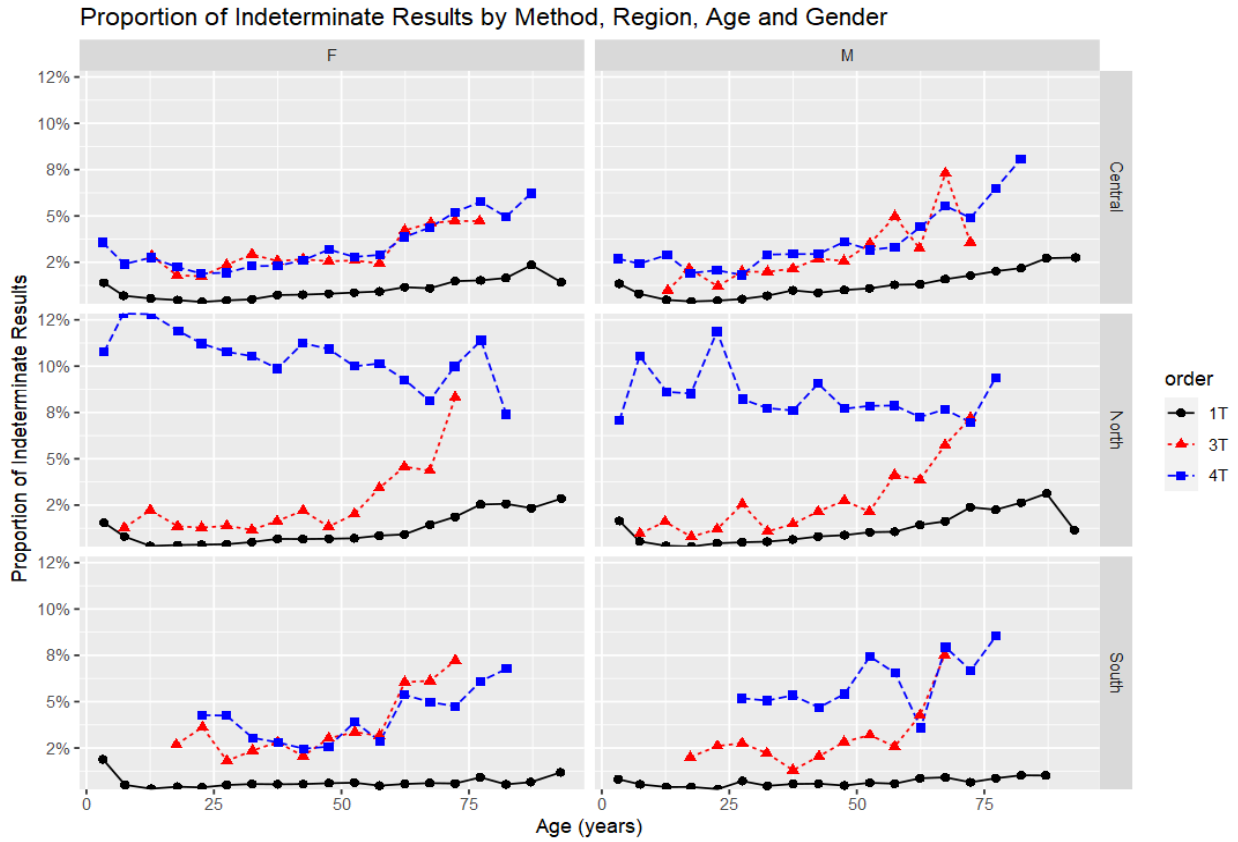
Supplemental Fig. 2. Proportion of positive QFT results by method, region, age, and gender. 1T represents QFT-Plus with one heparin tube draw, whereas 4T represents QFT-Plus with a four-tube draw; 3T represents QFT-GIT



Supplemental Fig. 3. Proportion of positive QFT results by clinical specialty. Most listed specialties had $\geq 1,000$ tests; a minimum number of tests for this figure was 100 tests per specialty. 1T represents QFT-PLUS with one heparin tube draw, whereas 4T represents QFT-Pus with a four-tube draw; 3T represents QFT-GIT.



Supplemental Fig. 4. Proportion of indeterminate QFT results by method, region, age, and gender. 1T represents QFT-PLUS with one heparin tube draw, whereas 4T represents QFT-Plus with a four-tube draw; 3T represents QFT-GIT



Supplemental Fig. 5. Proportion of indeterminate QFT results by clinical specialty. Most listed specialties had $\geq 1,000$ tests; a minimum number of tests for this figure was 100 tests per specialty. 1T represents QFT-PLUS with one heparin tube draw, whereas 4T represents QFT-Pus with a four-tube draw; 3T represents QFT-GIT.

