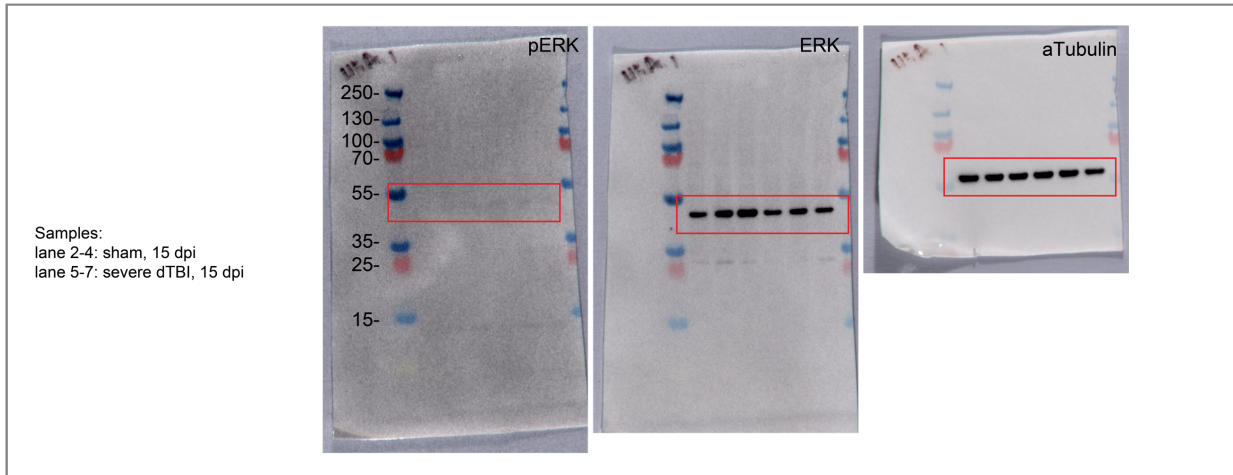
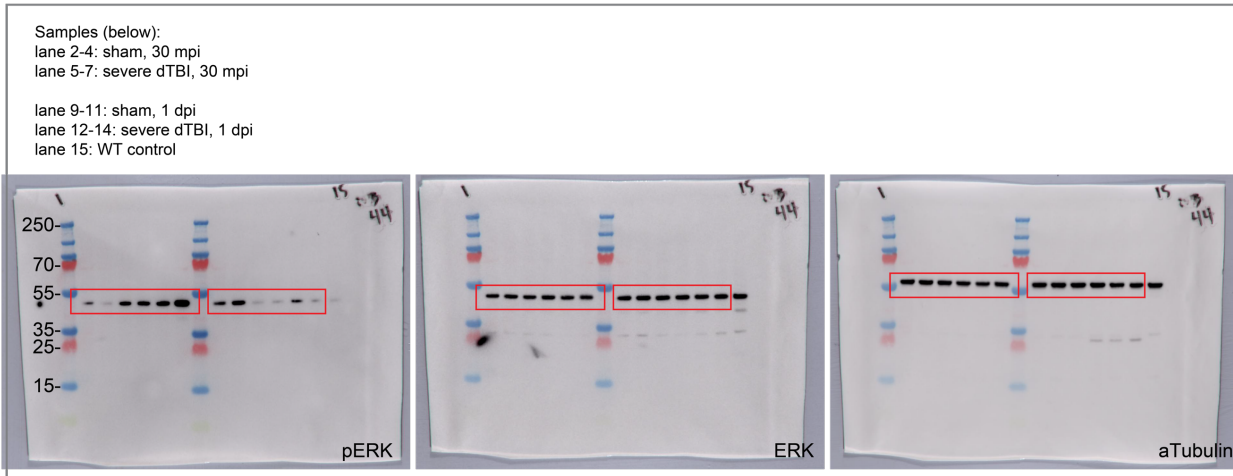
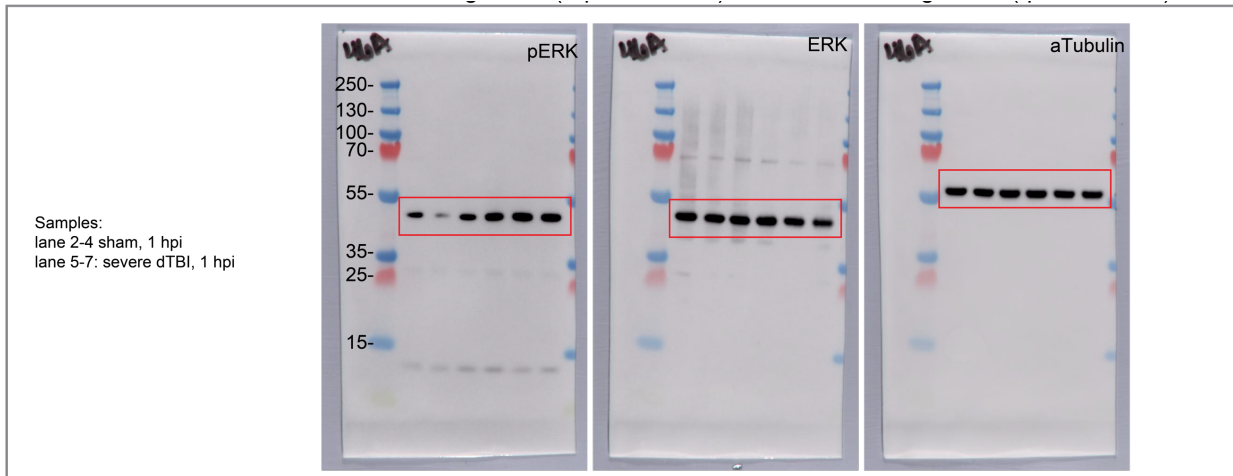
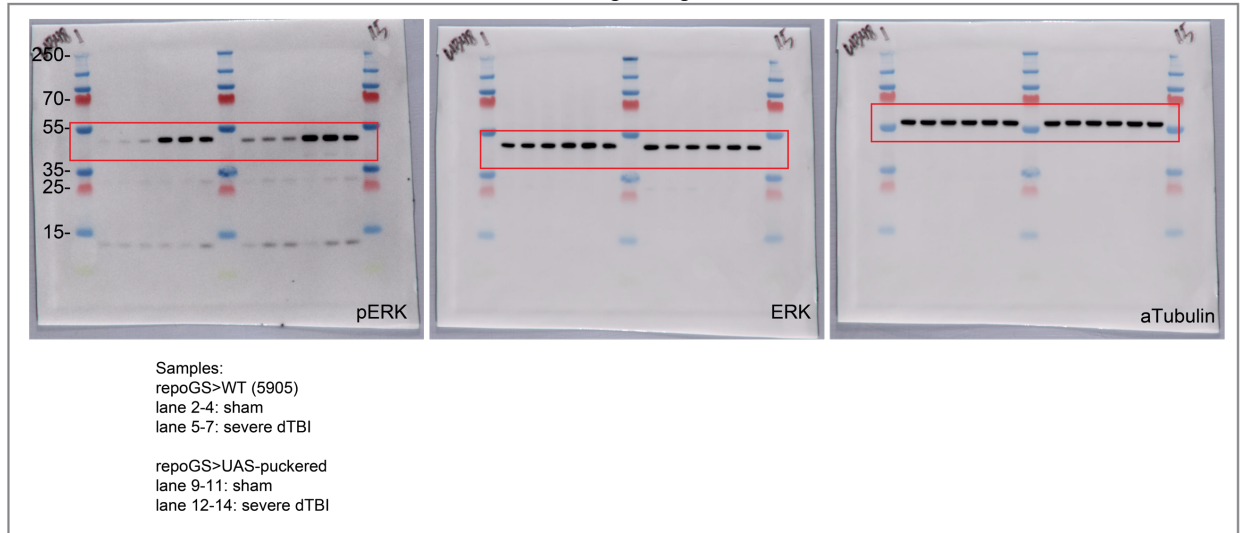


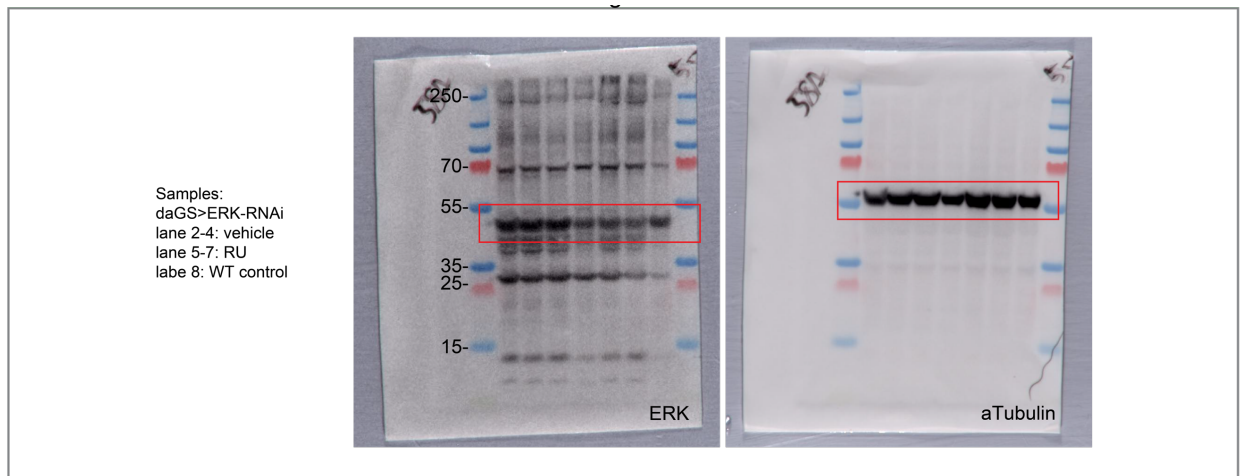
**Source data Figure 4a/Extended Data Figure 3f:** full uncropped western immunoblots with protein standards. The shown blots were used for both the representative images (Figure 4a, top) and for quantification (Figure 4a, bottom). The red box highlights the blots shown in Extended Data Figure 3f, which show all biological replicates quantified. The grey box indicates blots that were probed and re-stripped for multiple antigens. Molecular weights are labelled; protein ladder was PageRuler Plus Prestained Protein Ladder (Cat# 26619). Left most (ladder) is lane 1.



**Source data for Figure 4c/Extended Data Figure 4b:** full uncropped western immunoblots with protein standards. The shown blots were used for both the representative images (Figure 4c, top) and for quantification (Figure 4c, bottom). The red box highlights the blots shown in Extended Data Figure 4b, which show all biological replicates quantified. The grey box indicates blots that were probed and re-stripped for multiple antigens. Molecular weights are labelled; protein ladder was PageRuler Plus Prestained Protein Ladder (Cat# 26619). Left most (ladder) is lane 1.



**Above: source data for Extended Data Figure 4g:** full uncropped western immunoblots with protein standards. The red box highlights the blots shown in Extended Data Figure 4g, which show all biological replicates quantified. The grey box indicates blots that were probed and re-stripped for multiple antigens. Molecular weights are labelled; protein ladder was PageRuler Plus Prestained Protein Ladder (Cat# 26619). Left most (ladder) is lane 1.



**Source Data for Extended Data Figure 4i:** full uncropped western immunoblots with protein standards. The red box highlights the blots shown in Extended Data Figure 4i, which show all biological replicates quantified. The grey box indicates blots that were probed and re-stripped for multiple antigens. Molecular weights are labelled; protein ladder was PageRuler Plus Prestained Protein Ladder (Cat# 26619). Left most (ladder) is lane 1.