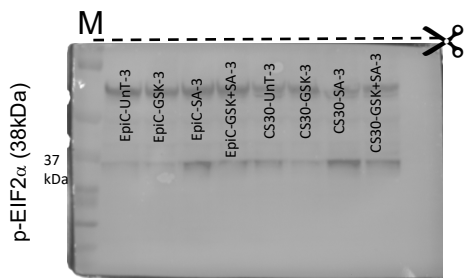
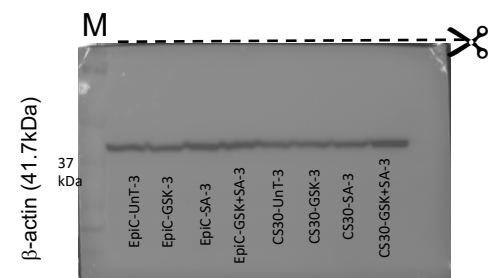
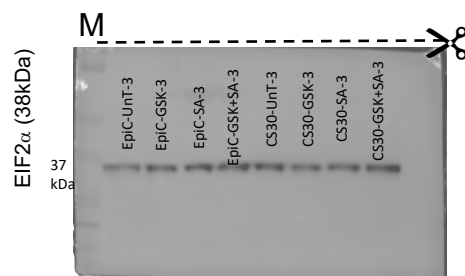
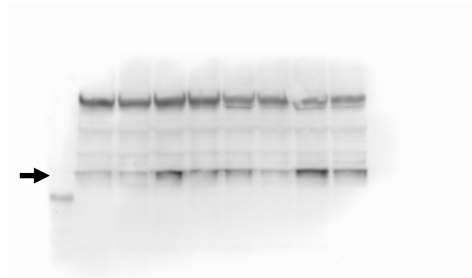


### a MARKER (M) OVERLAY



### UNCROPPED BLOT



**Source Data Figure 6** | Uncropped western blot (WB) scans (right; luminescence channel) and their overlays with molecular weight markers (left; light channel) for Fig. 6a. Sample labels refer to hiPSC-derived organoid line codes (see Supplementary Table 1) followed by batch codes. Dashed lines indicate blot membrane cuts that enabled simultaneous detection of multiple proteins in the same sample.