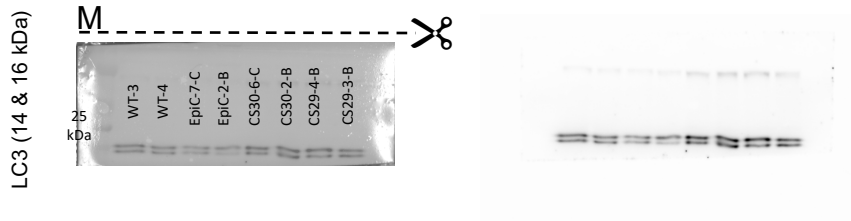


**c** MARKER (M) OVERLAY

UNCROPPED BLOT



**Source Data Extended Data Figure 4** | Uncropped western blot (WB) scans (right; luminescence channel) and their overlays with molecular weight markers (left; light channel) for Extended Data Fig. 4c. Sample labels refer to hiPSC-derived organoid line codes (see Supplementary Table 1) followed by batch codes. Dashed lines indicate blot membrane cuts that enabled simultaneous detection of multiple proteins in the same sample.