

Figure 6. Average structural connectivity strength across subjects. Modules include: (1): Sensory/somatomotor (2):Cingulo-opercular (3):Salience (4):Auditory (5): Subcortical (6):Default Mode (7):Visual (8):Fronto-parietal (9):Ventral-attention (10):Dorsal-attention. The SC values lie between 0 and 1.

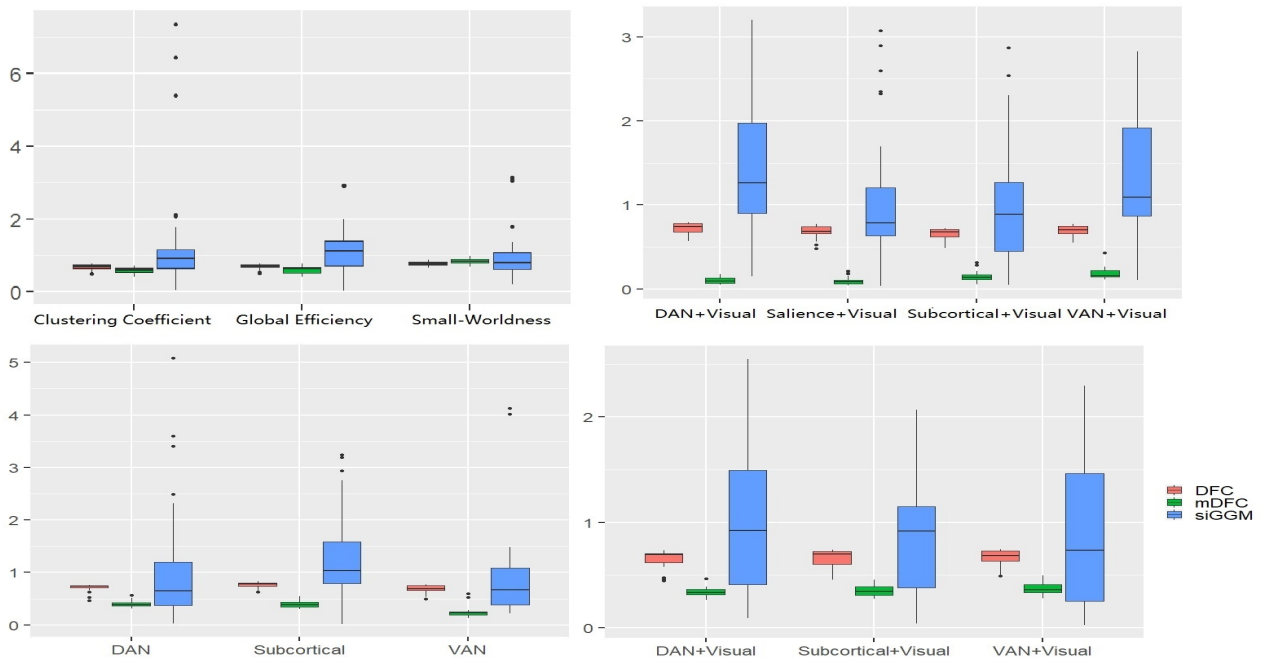


Figure 7. Prediction box plots for BDI unadjusted analysis with network density = 0.10