

Electronic Supplementary Material

Sustainability of SARS-CoV-2 Induced Humoral Immune Responses in COVID-19 Patients from Hospitalization to Convalescence over Six Months

Yang Zheng^{1,6#} • Qing Zhang^{2#} • Ashaq Ali^{3,9} • Ke Li⁷ • Nan Shao^{1,9} • Xiaoli Zhou² • Zhiqin Ye² • Xiaomin Chen² • Shanshan Cao³ • Jing Cui^{3,6} • Juan Zhou³ • Dianbing Wang¹ • Baidong Hou¹ • Min Li¹ • Mengmeng Cui¹ • Lihua Deng² • Xinyi Sun² • Qian Zhang² • Qinfang Yang⁷ • Yong li² • Hui Wang⁵ • Yake Lei⁸ • Bo Yu⁸ • Yegang Cheng^{2✉} • Xiaolin Tong^{4✉} • Dong Men^{3,9✉} • Xian-En Zhang^{1,9✉}

1. National Laboratory of Biomacromolecules, CAS Center for Excellence in Biomacromolecules, Institute of Biophysics, Chinese Academy of Sciences, Beijing 100101, China
2. Hubei Provincial Hospital of Traditional Chinese Medicine, Wuhan 430074, China
3. State Key Laboratory of Virology, Wuhan Institute of Virology, Chinese Academy of Sciences, Wuhan 430071, China
4. Guang'an men Hospital, China Academy of Chinese Medical Sciences, Beijing 100053, China
5. Health Bureau of Wuchang District, Wuhan 430070, China
6. Hubei University, Wuhan 430074, China
7. Shenzhen Mindray Bio-Medical Electronics Co., Ltd, Shenzhen 518057, China
8. Hubei Provincial Center for Disease Control & Prevention, Wuhan 430079, China
9. University of Chinese Academy of Sciences, Beijing 100049, China

Supporting information to DOI: 10.1007/s12250-021-00360-4

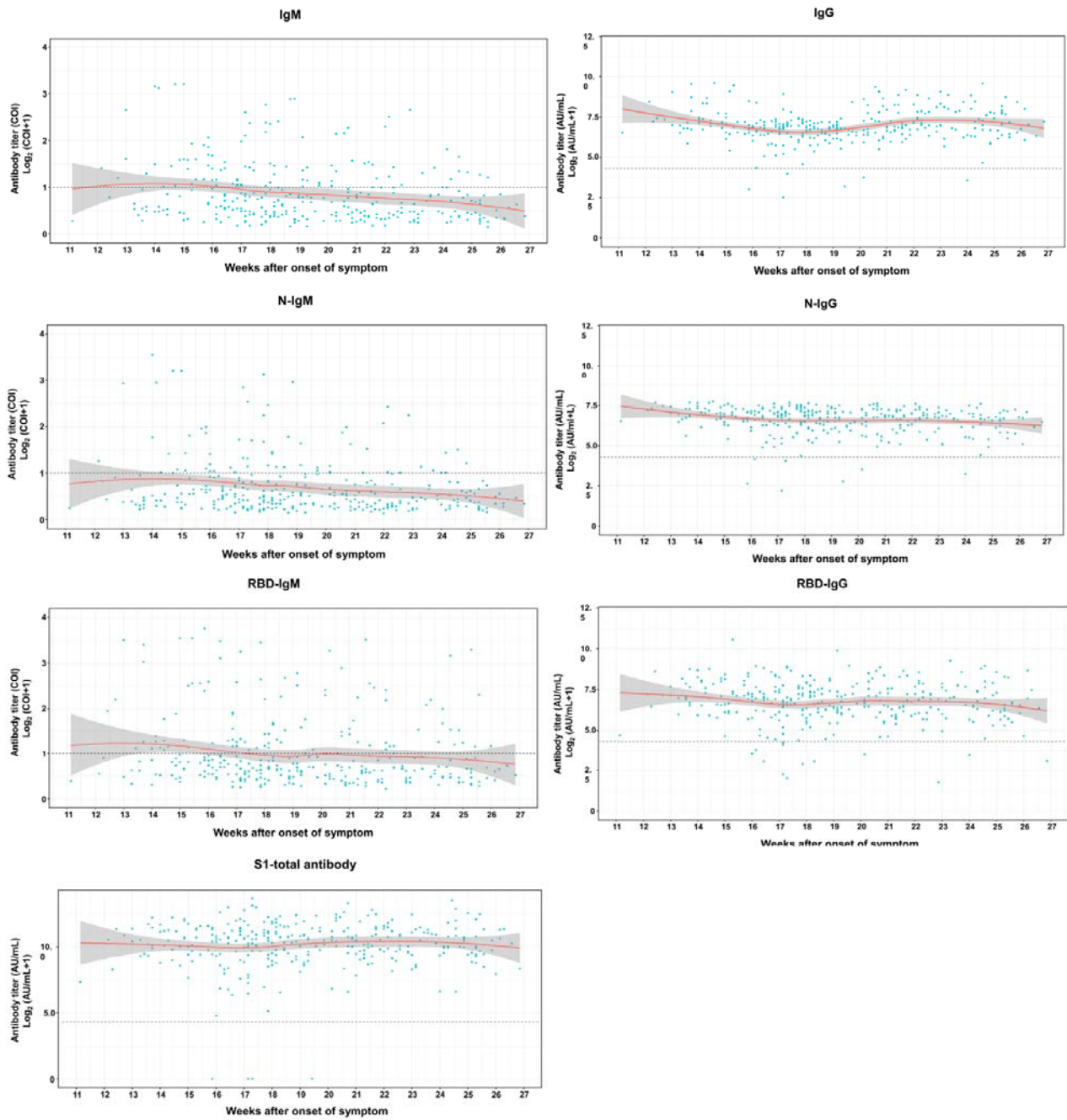


Fig. S1 Dynamics of respective SARS-CoV-2 specific antibody titers from the onset of symptoms to convalescent period. Each antibody titer changes from 11th to 27th week, using the same samples as shown in Figure 1. The dashed line is the cutoff value, and the gray shading is the 95% confident interval.