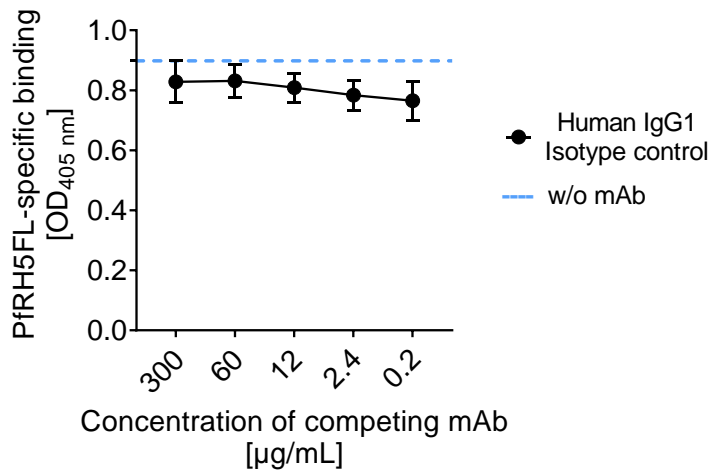
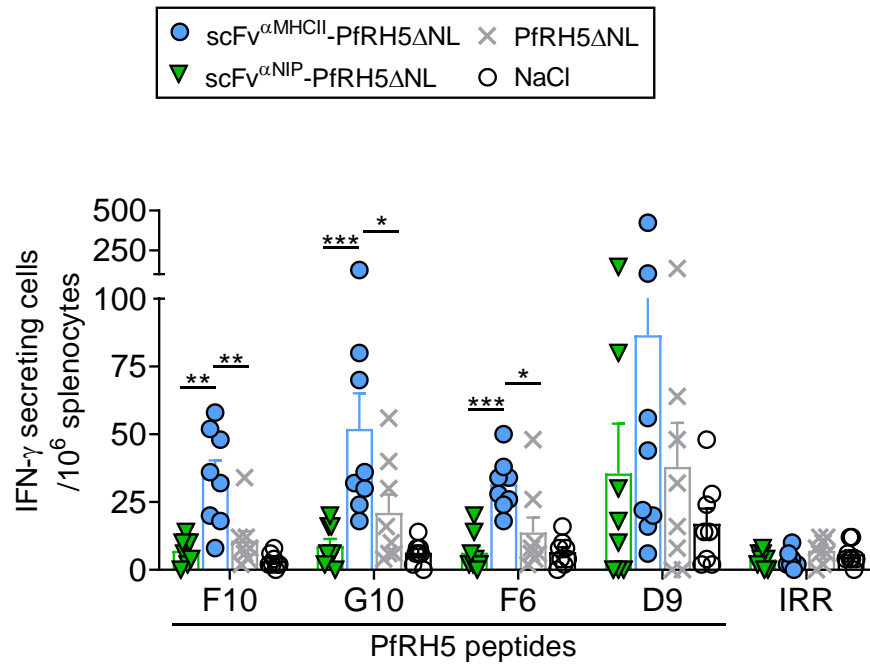


Supplementary Figures



Supplementary Figure 1. Isotype control do not prevent binding of PFRH5-specific sera to PFRH5 protein. BALB/c mice ($n = 6$) were vaccinated three times (day 0, 21 and 42) with 50 μg DNA i.m./EP with scFv ^{αMHCII} -PFRH5 ΔNL and sera harvested at day 62. Pooled sera were incubated with a titration (50, 10, 2, 0.4 and 0.08 $\mu\text{g/ml}$) of a human IgG isotype control antibody or without (w/o) mAb (stipled line) before binding to PFRH5FL protein were analyzed in ELISA. Samples were performed as technical triplicates (mean \pm SD).



Supplementary Figure 2. PfRH5ΔNL-containing targeted DNA vaccines induced rapid IFN- γ T cell responses against PfRH5 peptides. BALB/c mice were immunized i.m./EP with 50 μ g of indicated DNA plasmids or NaCl. Spleens were harvested at day 5 post vaccination and IFN- γ producing splenocytes were measured by ELISPOT after stimulation with the indicated PfRH5 peptides or irrelevant control (IRR, IYSTVASSL from hemagglutinin). n = 8 mice/group (mean \pm SEM). *p<0.05, **p<0.01, two-tailed Mann-Whitney test.