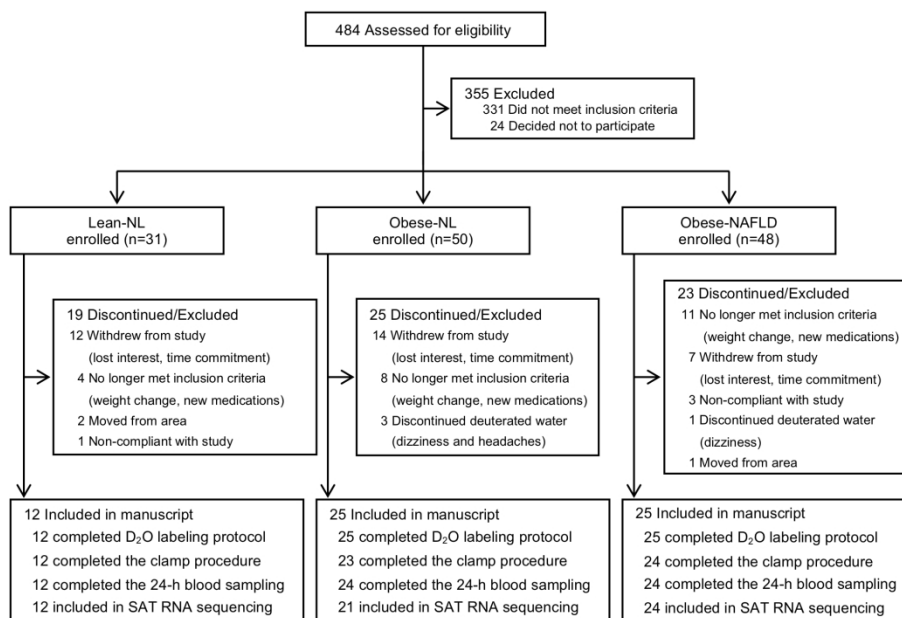


12
13
14 **Supplementary Figure 1. Study flow.** Abbreviations: NL=normal oral glucose tolerance and
15 IHTG content; SAT= subcutaneous adipose tissue.
16
17
18
19

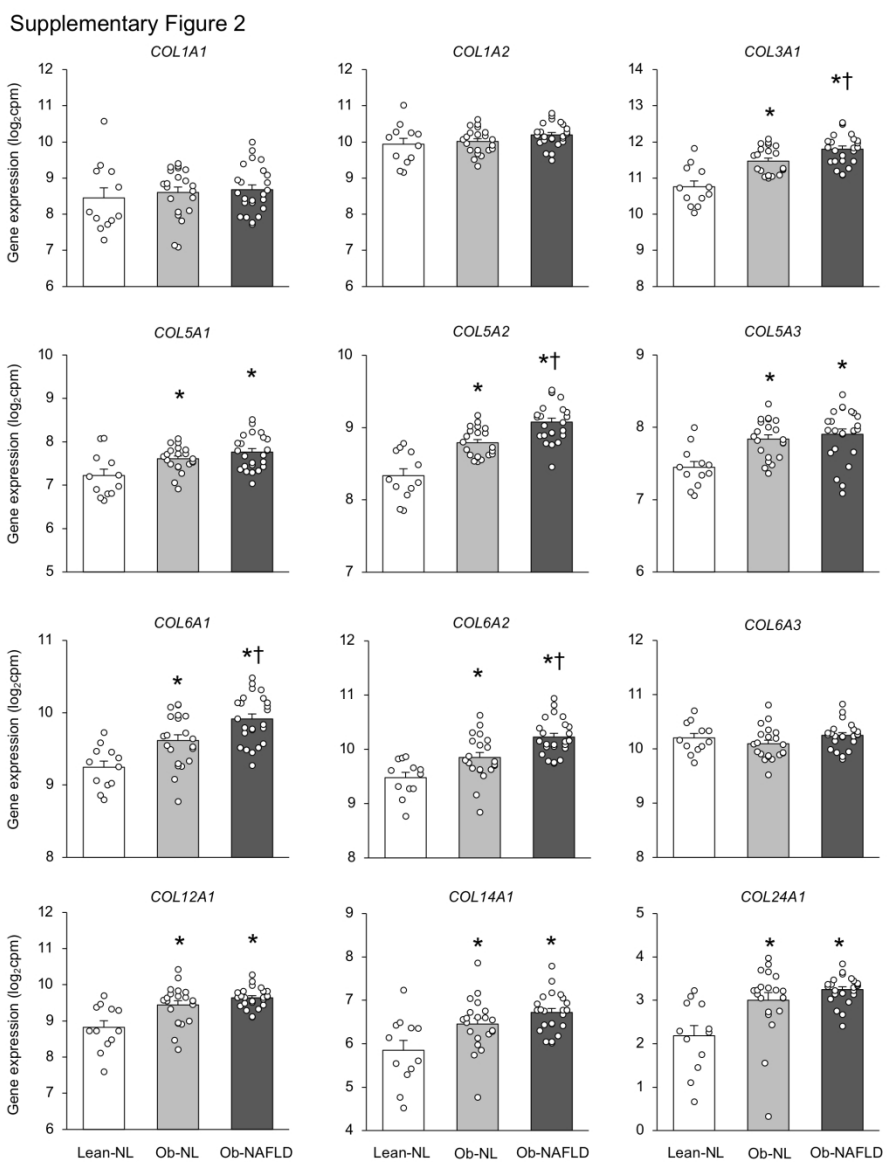
20 **Supplementary Figure 2. Collagen gene expression in subcutaneous adipose tissue is**
21 **greater in people with obesity and NAFLD.** Expression of genes encoding for individual
22 collagen isoforms in subcutaneous abdominal adipose tissue in the Lean-normal (NL; $n=12$),
23 Obese-normal (Ob-NL; $n=21$) and Obese-NAFLD (Ob-NAFLD; $n=24$) groups. Data are means \pm
24 SEM. One-way analysis of variance (ANOVA) and Fisher's least significant difference post-hoc
25 testing where appropriate were used to identify significant mean differences between groups.
26
27
28
29
30
31
32
33 * $P<0.05$ vs. Lean-NL. † $P<0.05$ vs. Ob-NL.
34
35
36
37
38
39
40
41
42
43
44
45
46
47
48
49
50
51
52
53
54
55
56
57
58
59
60

Supplementary Figure 1



177x228mm (300 x 300 DPI)

1
2
3
4
5
6
7
8
9
10
11
12
13
14
15
16
17
18
19
20
21
22
23
24
25
26
27
28
29
30
31
32
33
34
35
36
37
38
39
40
41
42
43
44
45
46
47
48
49
50
51
52
53
54
55
56
57
58
59
60



177x228mm (300 x 300 DPI)