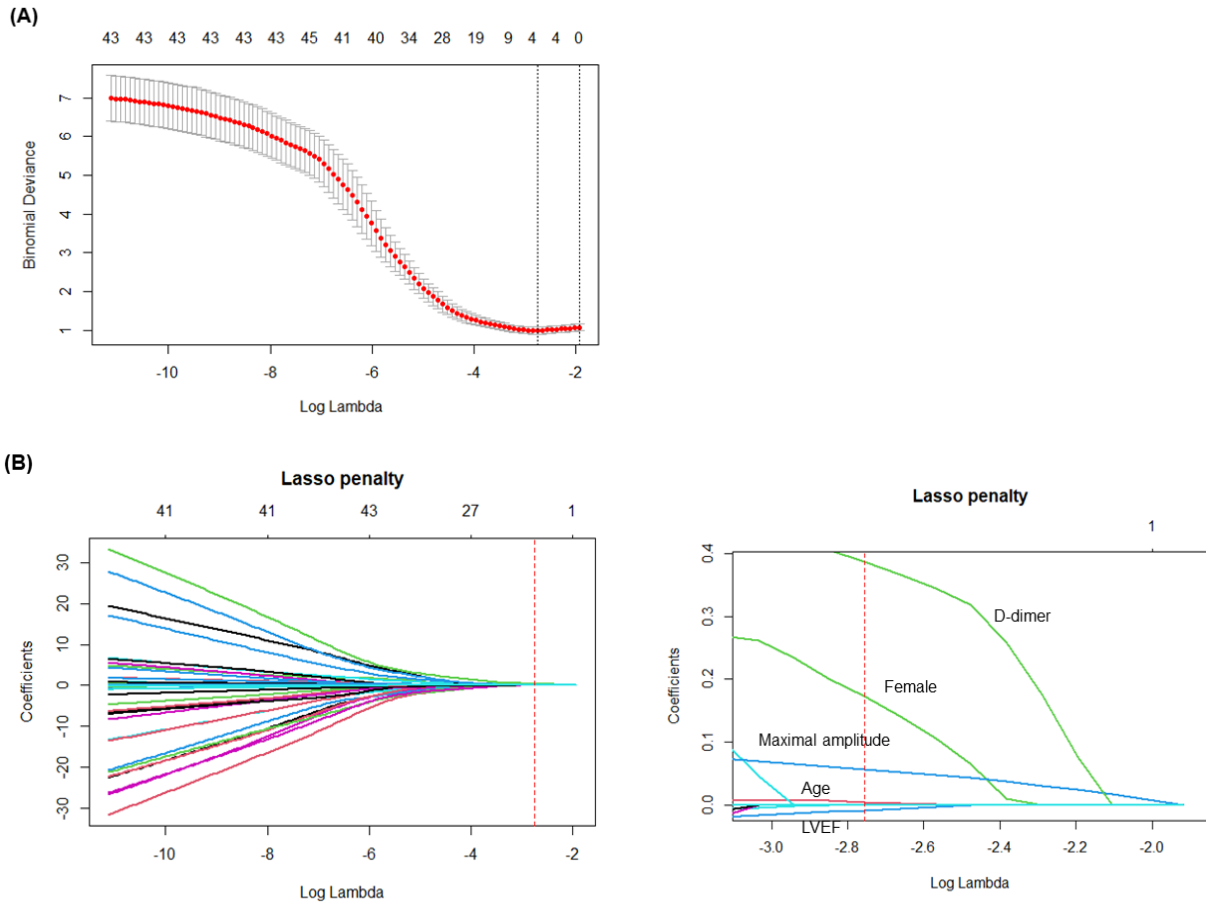


## Supplemental Material

**Supplemental Figure 1. Texture feature selection using the LASSO model to determine risk factor for CMD: (A) The tuning parameter selection in the LASSO model used 10-fold cross-validation via minimum criteria; and (B) LASSO coefficient profiles of the 46 baseline features**



CMD = coronary microvascular dysfunction; LASSO = least absolute shrinkage and selection operator; LVEF = left ventricular ejection fraction.