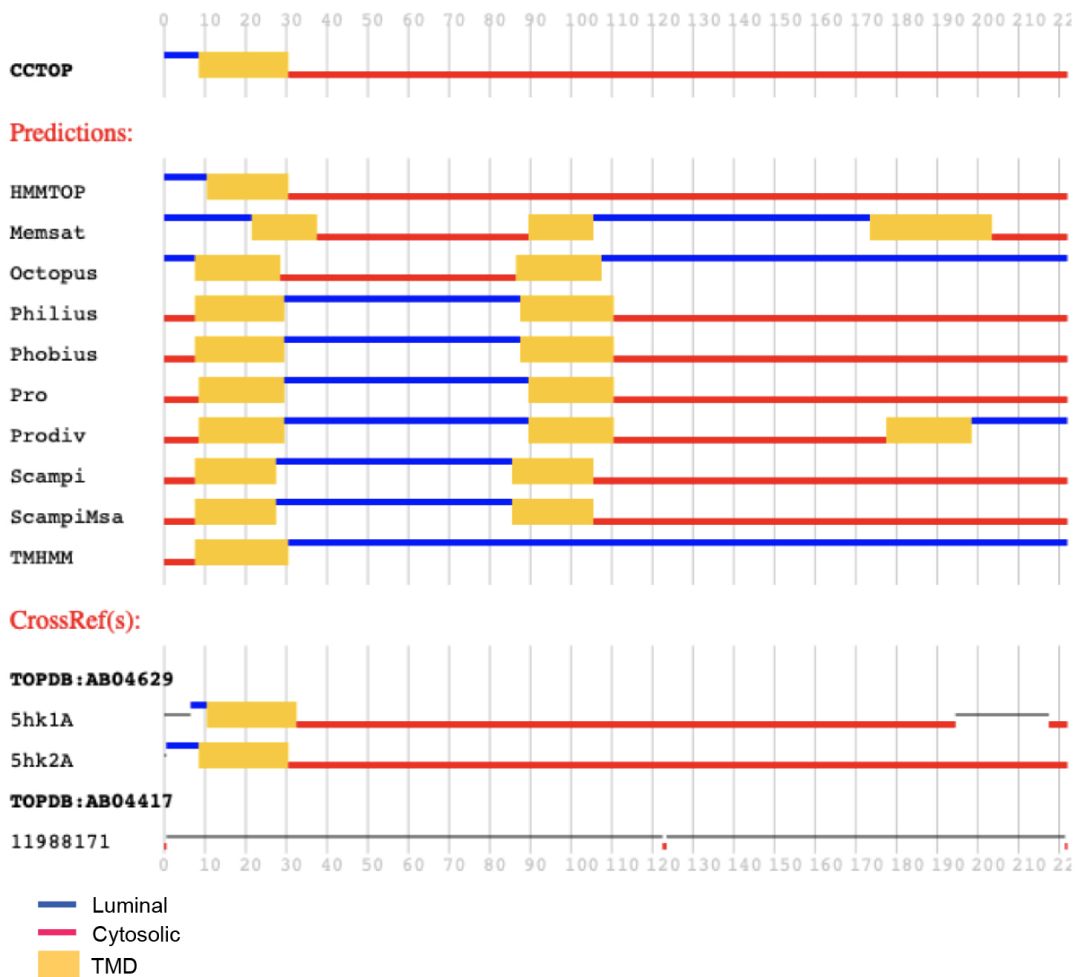


# The Sigma-1 receptor is an ER-localized type II membrane protein

Neeraj Sharma, Chaitanya Patel, Marina Shenkman, Amit Kessel, Nir Ben-Tal and Gerardo Z. Lederkremer

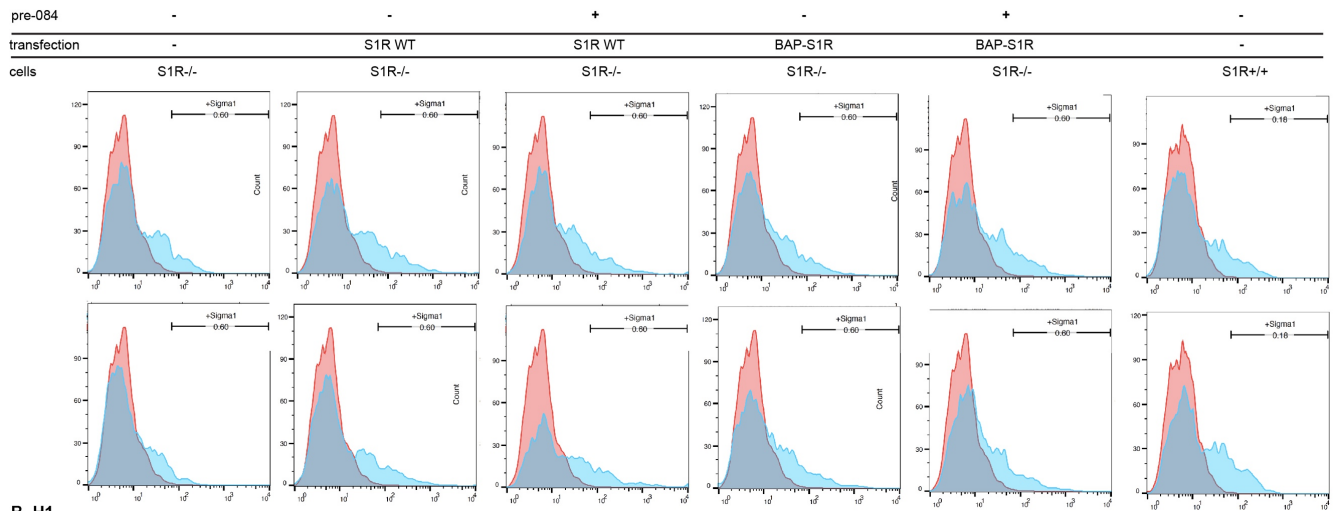
## Supplementary Material

### Supplementary figures

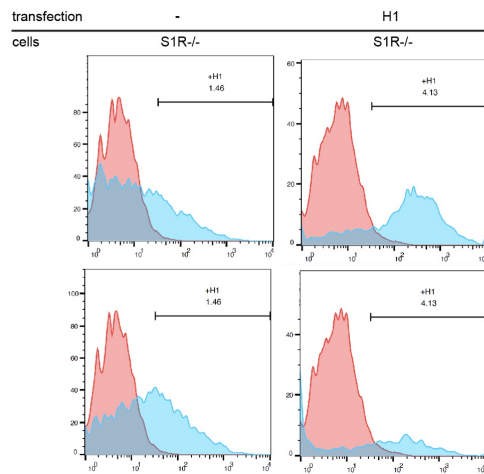


**Suppl. Fig. 1. Bioinformatic predictions estimate conflicting topologies and number of transmembrane domains for the S1R.** The CCTOP server predicts a type III membrane protein topology (top), based on a series of predictive methods yielding a variety of topologies.

### A. S1R

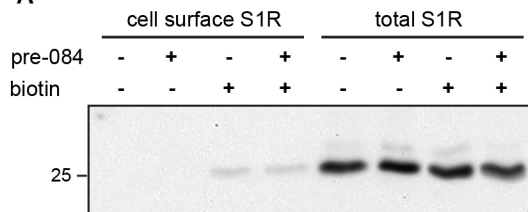


### B. H1

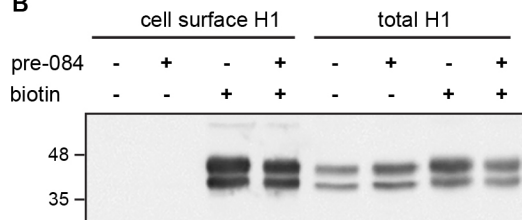


**Suppl. Fig. 2.** Raw FACS data of a representative experiment of 3 independent repeats corresponding to Fig. 7A. In addition, BAP-S1R was also analyzed showing a minor cell surface expression, similar to S1R WT.

### A



### B



**Suppl. Fig. 3.** Experiment similar to that shown in Fig. 8, with S1R<sup>-/-</sup> HEK293 cells expressing WT S1R (A) or H1 (B). In this case controls were added where incubation with biotin was omitted, showing no detectable signal.